

4

3

2

1

D

D

C

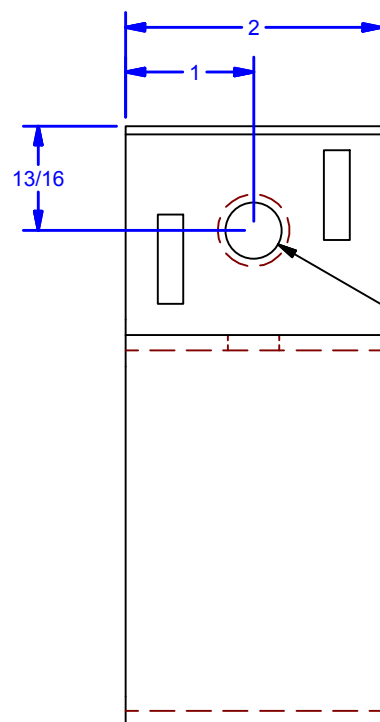
C

B

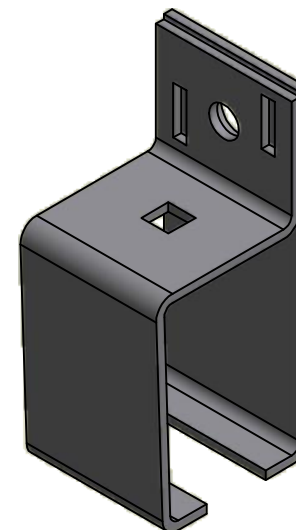
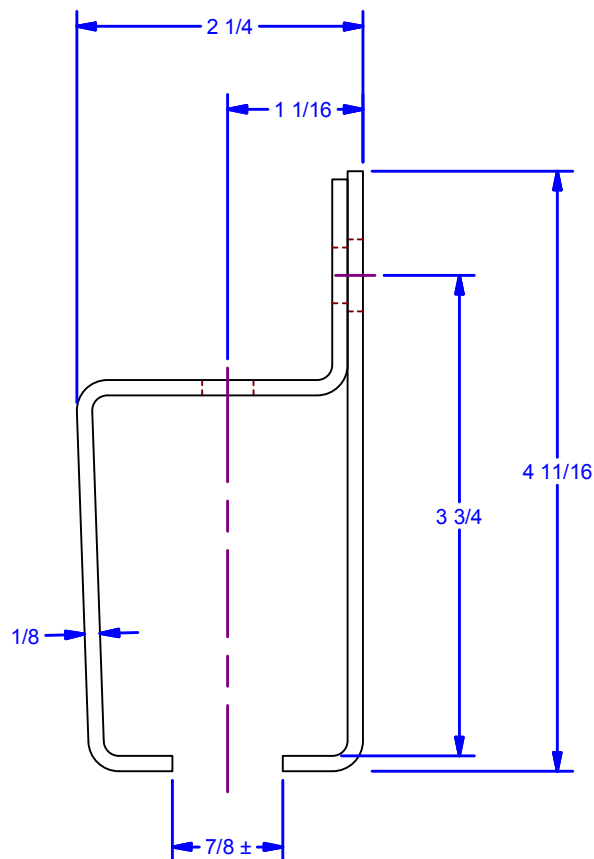
B

A

A



Ø7/16 THRU  
for 3/8 Fastener (By Others)



**NOTE:**  
30" On Center Maximum Bracket Spacing.

**Avail. Finishes:**  
Powder Coat Black  
Powder Coat Pebble Tan  
Galvanized  
304 Stainless Steel - #2B Mill Finish  
304 Stainless Steel - #4 Brushed Finish

#### ALL DIMENSIONS IN INCHES

THE INFORMATION CONTAINED IN THIS DRAWING IS THE SOLE PROPERTY OF CROWN INDUSTRIAL. ANY REPRODUCTION IN PART OR AS A WHOLE WITHOUT THE WRITTEN PERMISSION OF CROWN INDUSTRIAL IS PROHIBITED.

DESCRIPTION:

Center Bracket, #4 Track

FINISH:

PART #:

0000475

STOCK #:

4x1

MATERIAL:

Welded Steel Mild

# PCS:

1

REV:

DWG #: 0002502  
DRAWN: BCM 3/20/2009  
SHEET #3  
File: 0002502.idw



**CROWN  
INDUSTRIAL**

So. San Francisco, Ca  
(650) 952-5150  
www.crown-industrial.com

4

3

2

1

