

4

3

2

1

D

D

C

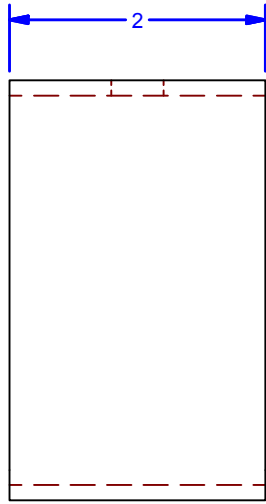
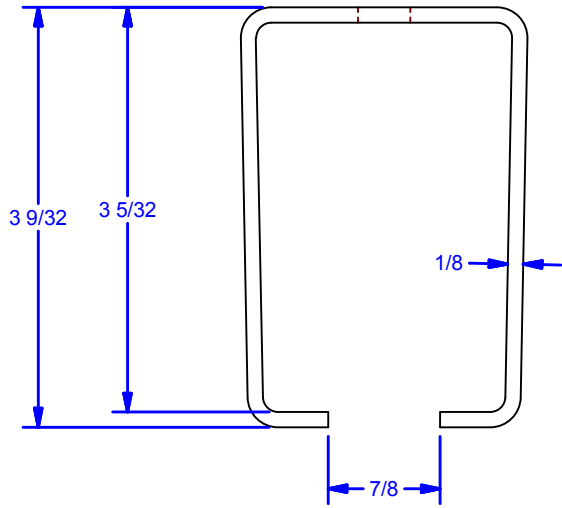
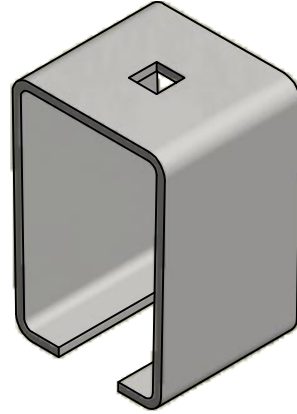
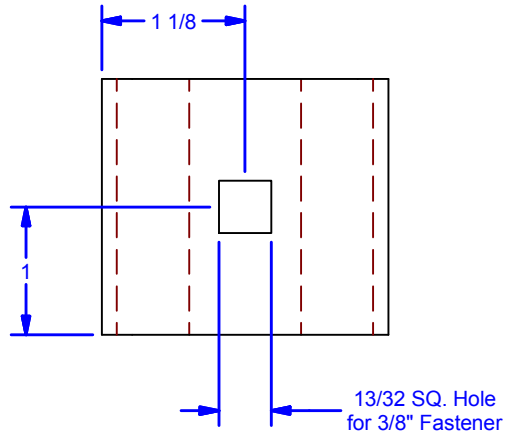
C

B

B

A

A



Note:
30" On Center Maximum Bracket Spacing

- Available Finishes:**
- Powder Coat Black
 - Powder Coat Pebble Tan
 - Galvanized
 - 304 Stainless Steel - #2B Mill Finish
 - 304 Stainless Steel - #4 Brushed Finish

DWG #: 0002502
DRAWN:BCM 12/23/2014
SHEET #4
File: 0002502.idw

ALL DIMENSIONS IN INCHES

THE INFORMATION CONTAINED IN THIS DRAWING IS THE SOLE PROPERTY OF CROWN INDUSTRIAL. ANY REPRODUCTION IN PART OR AS A WHOLE WITHOUT THE WRITTEN PERMISSION OF CROWN INDUSTRIAL IS PROHIBITED.	PART #: 0000472	STOCK #: 4x18
	MATERIAL: Steel, Mild	
DESCRIPTION: Overhead Center Bracket, #4 Track		
FINISH:	# PCS: 1	REV:



CROWN INDUSTRIAL
So. San Francisco, Ca
(650) 952-5150
www.crown-industrial.com

4

3

2

1