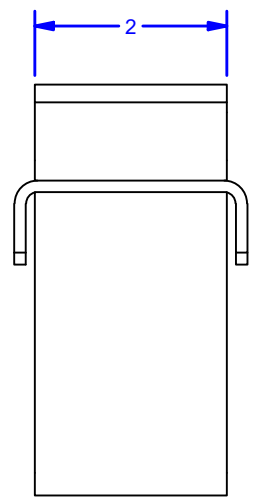
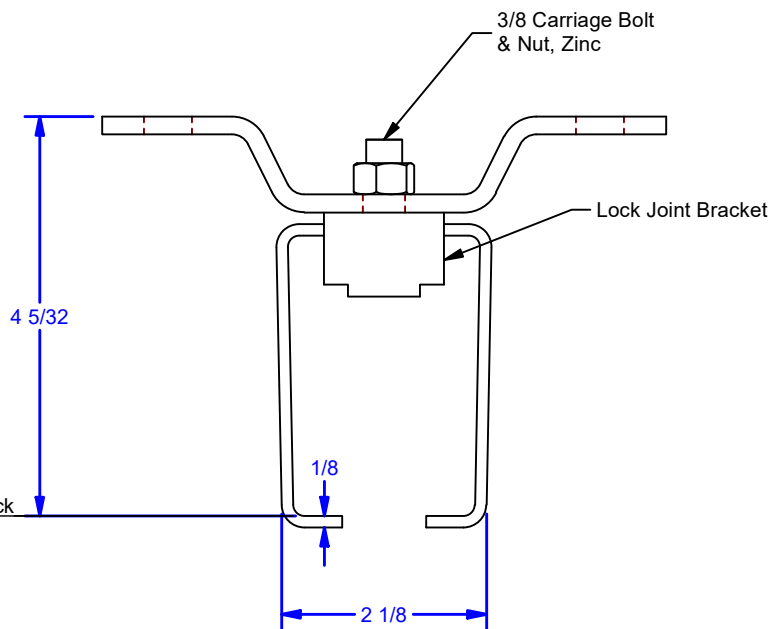
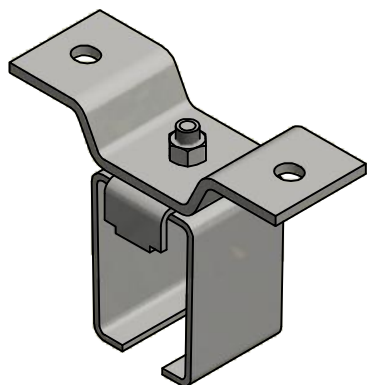
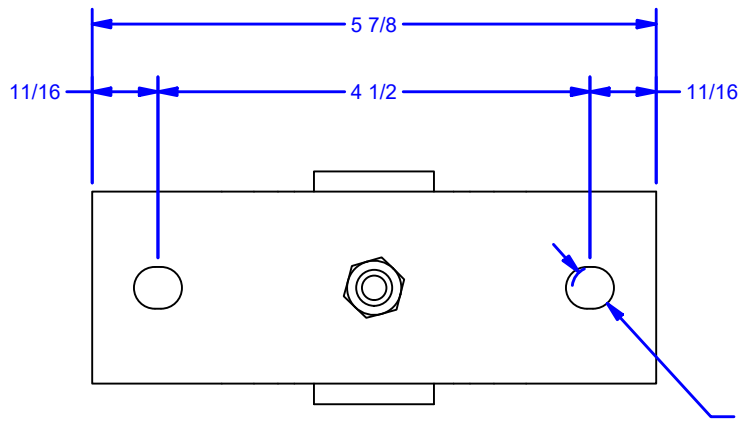


4 | 3 | 2 | 1



Note:
30" On Center Maximum Bracket Spacing

- Available Finishes:**
- Powder Coat Black
 - Powder Coat Pebble Tan
 - Galvanized
 - 304 Stainless Steel - #2B Mill Finish
 - 304 Stainless Steel - #4 Brushed Finish

ALL DIMENSIONS IN INCHES

THE INFORMATION CONTAINED IN THIS DRAWING IS THE SOLE PROPERTY OF CROWN INDUSTRIAL. ANY REPRODUCTION IN PART OR AS A WHOLE WITHOUT THE WRITTEN PERMISSION OF CROWN INDUSTRIAL IS PROHIBITED.	PART #:	STOCK #:
	0001793	4x59
MATERIAL:		
DESCRIPTION:		
Cross Ear Center Joint Bracket		
FINISH:	# PCS:	REV:



CROWN INDUSTRIAL
So. San Francisco, Ca
(650) 952-5150
www.crown-industrial.com

DWG #: 0002502
DRAWN:BCM 12/24/2014
SHEET #12
File: 0002502.idw

4 | 3 | 2 | 1