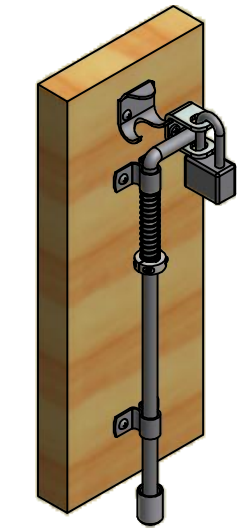
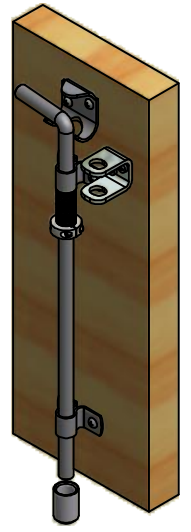
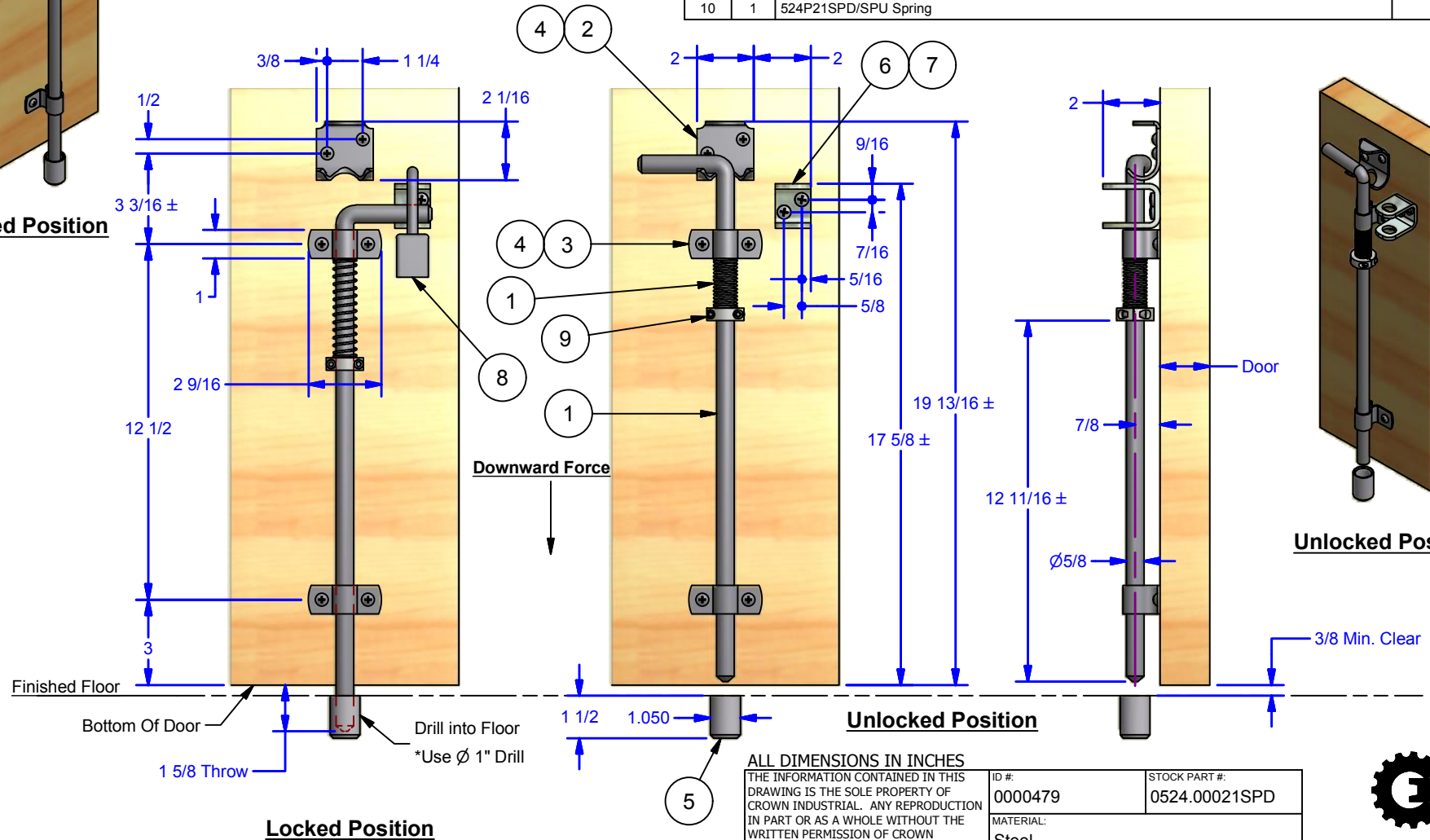


Parts List			
ITEM	QTY	DESCRIPTION	STOCK #
1	1	Cane	
2	1	524p21 Cane Retainer	
3	2	524P21 Guide Clip	
4	6	Round Head Phillips Wood Screw, Zinc	14-10 x 1-1/4
5	1	524P42 Floor Insert Sleeve for 524P21 Cane Bolt	0524.00042
6	1	Pad Lockable Assembly for 524 Cane Bolt	0524PL-Z
7	2	Pan Head Phillips Sheet Metal Screw	1/4-14 x 1 1/4
8	1	Padlock (By Others) Max. Shackle Dia: 1/2" Min. Vertical Clear: 1-3/4", Min. Horiz Clear: 1"	
9	1	(2pc) Clamping Collar	
10	1	524P21SPD/SPU Spring	



Locked Position



Unlocked Position

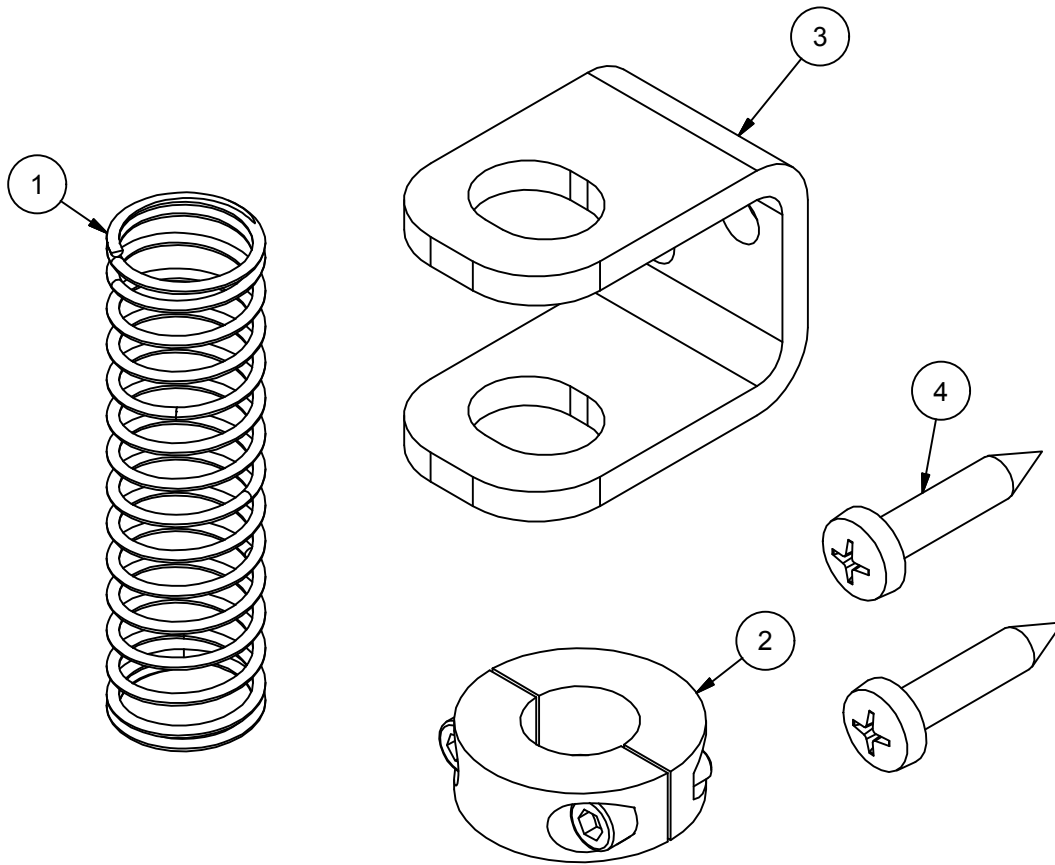
ALL DIMENSIONS IN INCHES		ID #:	STOCK PART #:
THE INFORMATION CONTAINED IN THIS DRAWING IS THE SOLE PROPERTY OF CROWN INDUSTRIAL. ANY REPRODUCTION IN PART OR AS A WHOLE WITHOUT THE WRITTEN PERMISSION OF CROWN INDUSTRIAL IS PROHIBITED.		0000479	0524.00021SPD
DESCRIPTION:		MATERIAL:	
Cane Bolt with Hold Down Spring Assy		Steel	
FINISH:		# PCS:	REV:
Clear Zinc		1	B

CROWN INDUSTRIAL
So. San Francisco, Ca
(650) 952-5150
www.crown-industrial.com

DWG #: 524P21
DRAWN:BCM 7/31/2015
SHEET #2
File: 0000478.idw

*Alternative Finish: #0524.00021SPU-BZ black zinc

Parts List			
ITEM	QTY	DESCRIPTION	STOCK #
1	1	524P21SPD/SPU Spring	
2	1	(2pc) Clamping Collar, 5/8" I.D.	
3	1	Pad Lockable Assembly for 524 Cane Bolt	0524PL-Z
4	2	Pan Head Phillips Sheet Metal Screw	1/4-14 x 1 1/4



ALL DIMENSIONS IN INCHES

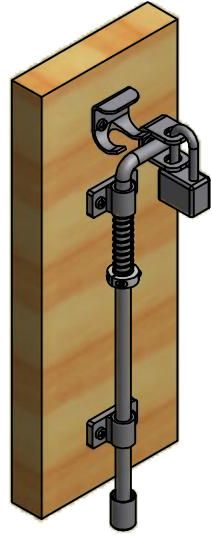
THE INFORMATION CONTAINED IN THIS DRAWING IS THE SOLE PROPERTY OF CROWN INDUSTRIAL. ANY REPRODUCTION IN PART OR AS A WHOLE WITHOUT THE WRITTEN PERMISSION OF CROWN INDUSTRIAL IS PROHIBITED.	ID #:	0001808	STOCK PART #:	524P21SP
	MATERIAL:			
DESCRIPTION: 524 P21 Hold Up/Down Spring Kit				
FINISH:		# PCS:	1	REV:



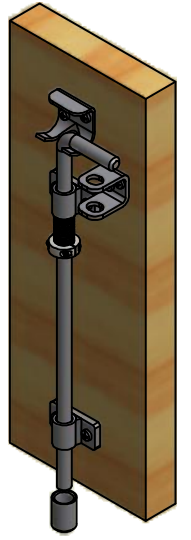
CROWN INDUSTRIAL
So. San Francisco, Ca
(650) 952-5150
www.crown-industrial.com

DWG #: 524P21
DRAWN:BCM 1/9/2015
SHEET #4
File: 0000478.idw

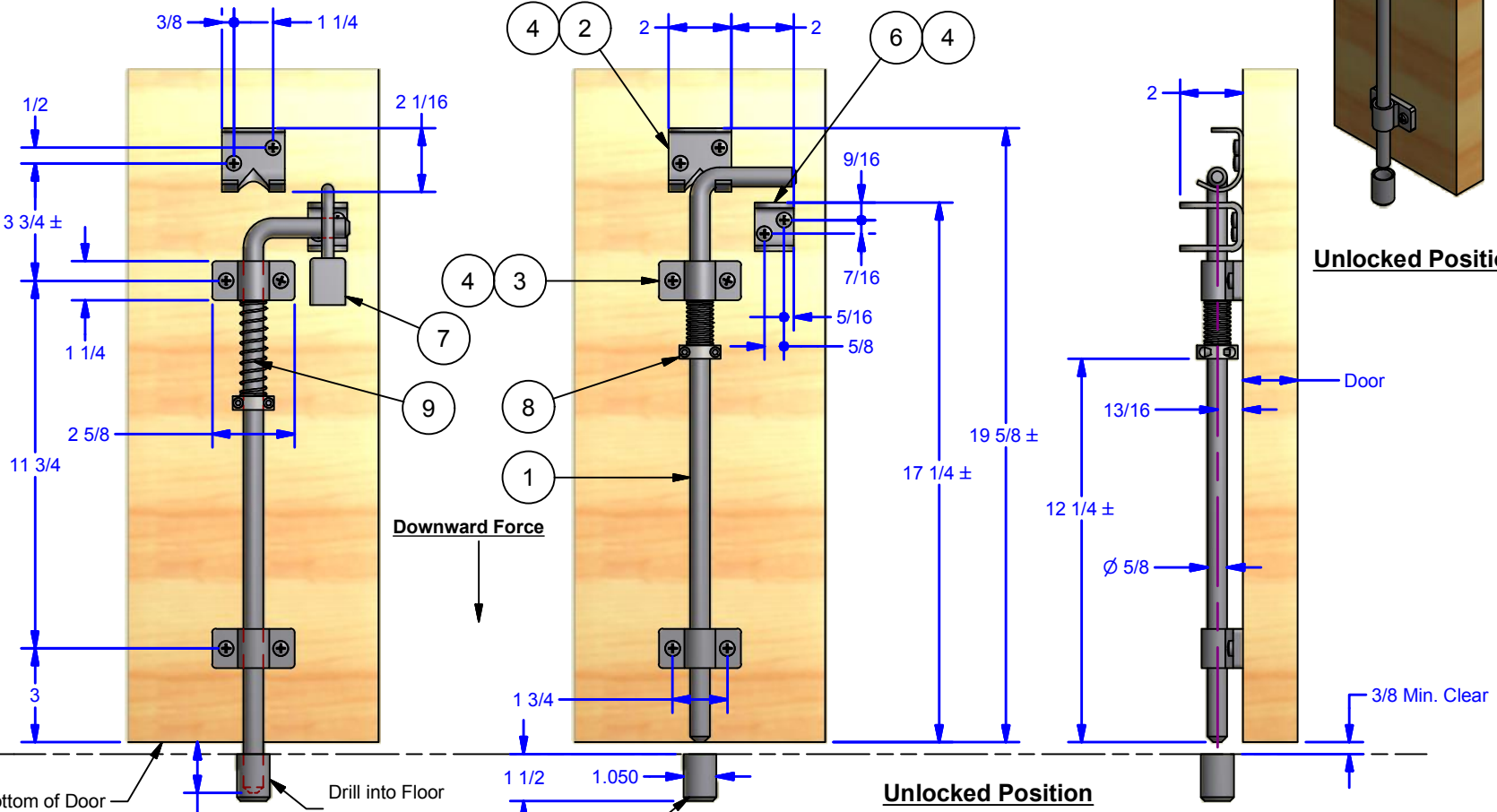
Parts List			
ITEM	QTY	DESCRIPTION	STOCK #
1	1	Cane, S.S.	
2	1	Cane Retainer, S.S.	
3	2	Guide Clip Weldment, S.S.	
4	8	Pan Head Phillips Sheet Metal Screw	1/4-14 x 1 1/4
5	1	Keeper for 0524.00021 Cane Bolt-SS #2B	0524.00042-S
6	1	Pad Lockable Assembly for 524 S.S. Cane Bolt	0524PL-S
7	1	Padlock (By Others) Max. Shackle Dia: 1/2" Min. Vertical Clear: 1-3/4", Min. Horiz Clear: 1"	
8	1	(2pc) Clamping Collar, 5/8" I.D S.S.	
9	1	524P21SPD/SPU-S Spring, S.S.	



Locked Position



Unlocked Position



ALL DIMENSIONS IN INCHES		
THE INFORMATION CONTAINED IN THIS DRAWING IS THE SOLE PROPERTY OF CROWN INDUSTRIAL. ANY REPRODUCTION IN PART OR AS A WHOLE WITHOUT THE WRITTEN PERMISSION OF CROWN INDUSTRIAL IS PROHIBITED.	ID #: 0001947	STOCK PART #: 524P21SPD-S
DESCRIPTION: Cane Bolt with Hold Down Spring Assembly, Stainless Steel	MATERIAL: 304 Stainless Steel	
FINISH: Brushed	# PCS: 1	REV: A

CROWN INDUSTRIAL
 So. San Francisco, Ca
 (650) 952-5150
 www.crown-industrial.com

DWG #: 524P21
 DRAWN: BCM 7/31/2015
 SHEET #6
 File: 000478.idw