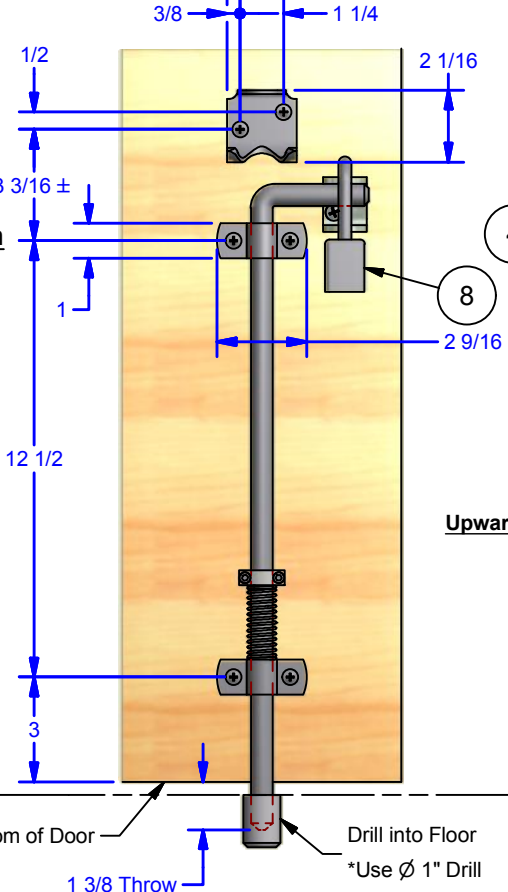


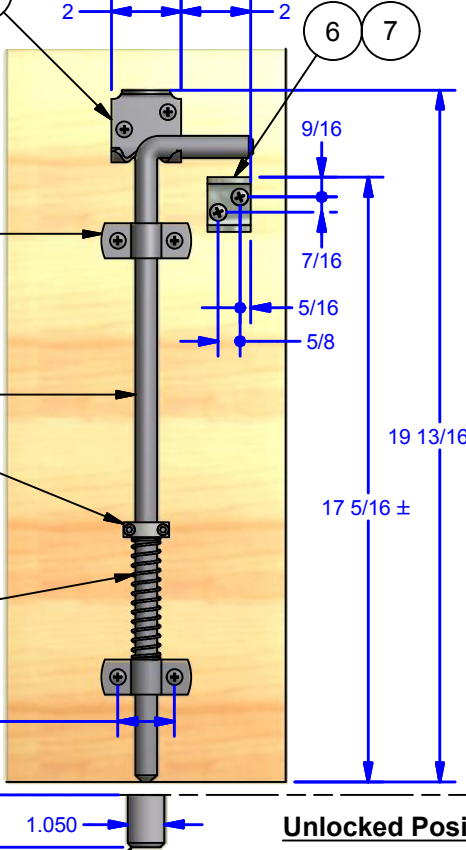
Parts List			
ITEM	QTY	DESCRIPTION	STOCK #
1	1	Cane	
2	1	524p21 Cane Retainer	
3	2	524P21 Guide Clip	
4	6	Round Head Phillips Wood Screw, Zinc	14-10 x 1-1/4
5	1	524P42 Floor Insert Sleeve for 524P21 Cane Bolt	0524.00042
6	1	Pad Lockable Assembly for 524 Cane Bolt	0524PL-Z
7	2	Pan Head Phillips Sheet Metal Screw	1/4-14 x 1 1/4
8	1	Padlock (By Others) Max. Shackle Dia: 1/2" Min. Vertical Clear: 1-3/4", Min. Horiz Clear: 1"	
9	1	(2pc) Clamping Collar	
10	1	524P21SPD/SPU Spring	



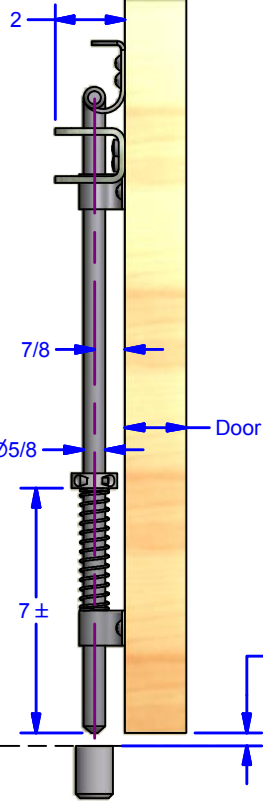
Locked Position



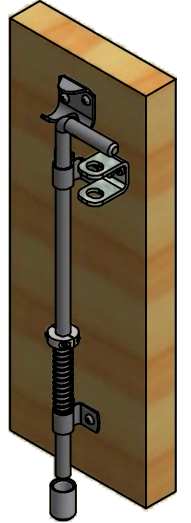
Locked Position



Unlocked Position



Unlocked Position



Finished Floor

Bottom of Door

Drill into Floor
*Use \varnothing 1" Drill

3/8 Min. Clear

ALL DIMENSIONS IN INCHES

THE INFORMATION CONTAINED IN THIS DRAWING IS THE SOLE PROPERTY OF CROWN INDUSTRIAL. ANY REPRODUCTION IN PART OR AS A WHOLE WITHOUT THE WRITTEN PERMISSION OF CROWN INDUSTRIAL IS PROHIBITED.

DESCRIPTION:

Cane Bolt with Hold Up Spring Assy

FINISH:

Clear Zinc

ID #:
0000480

MATERIAL:
Steel

STOCK PART #:
0524.00021SPU

PCS: 1
REV: B

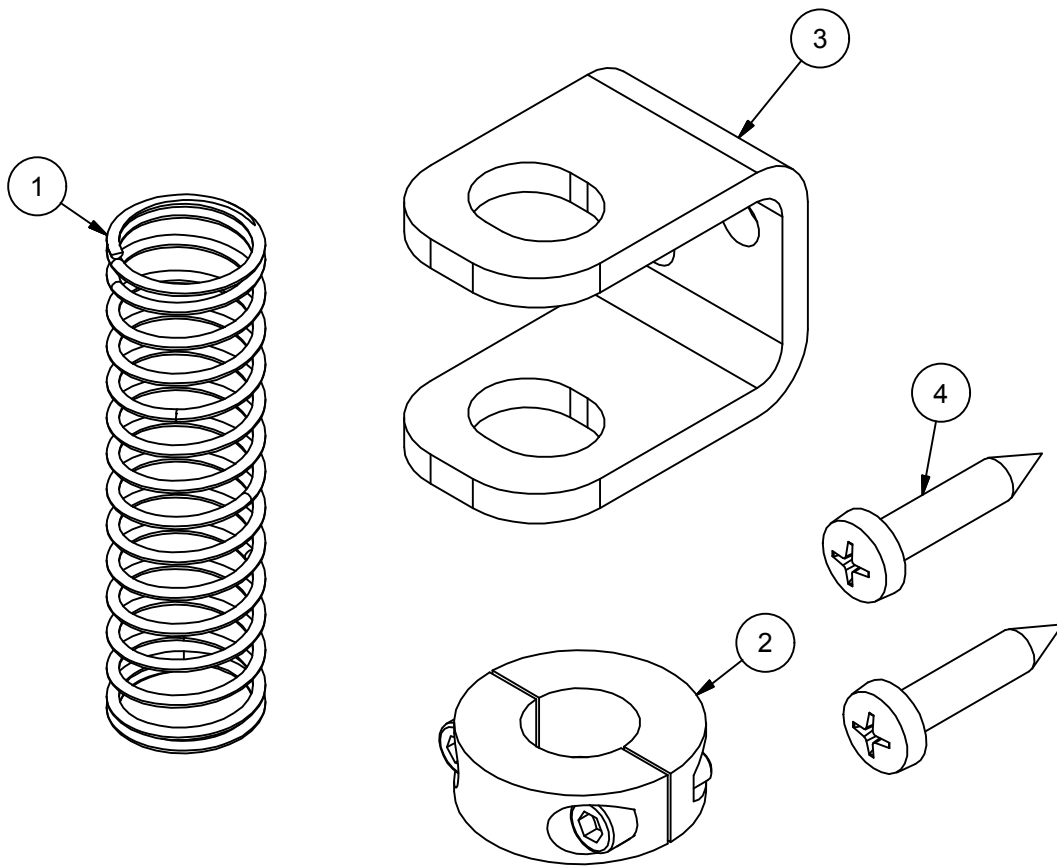


CROWN INDUSTRIAL

So. San Francisco, Ca
(650) 952-5150

www.crown-industrial.com

Parts List			
ITEM	QTY	DESCRIPTION	STOCK #
1	1	524P21SPD/SPU Spring	
2	1	(2pc) Clamping Collar, 5/8" I.D.	
3	1	Pad Lockable Assembly for 524 Cane Bolt	0524PL-Z
4	2	Pan Head Phillips Sheet Metal Screw	1/4-14 x 1 1/4



ALL DIMENSIONS IN INCHES

THE INFORMATION CONTAINED IN THIS DRAWING IS THE SOLE PROPERTY OF CROWN INDUSTRIAL. ANY REPRODUCTION IN PART OR AS A WHOLE WITHOUT THE WRITTEN PERMISSION OF CROWN INDUSTRIAL IS PROHIBITED.	ID #:	0001808	STOCK PART #:	524P21SP
	MATERIAL:			
DESCRIPTION: 524 P21 Hold Up/Down Spring Kit				
FINISH:		# PCS:	1	REV:



CROWN INDUSTRIAL

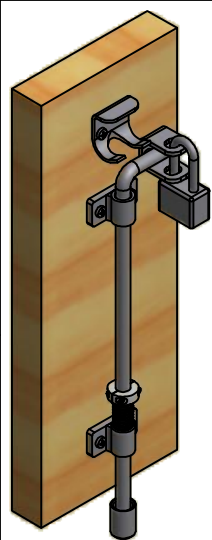
So. San Francisco, Ca
(650) 952-5150

www.crown-industrial.com

DWG #: 524P21
DRAWN:BCM 1/9/2015
SHEET #4

File: 0000478.idw

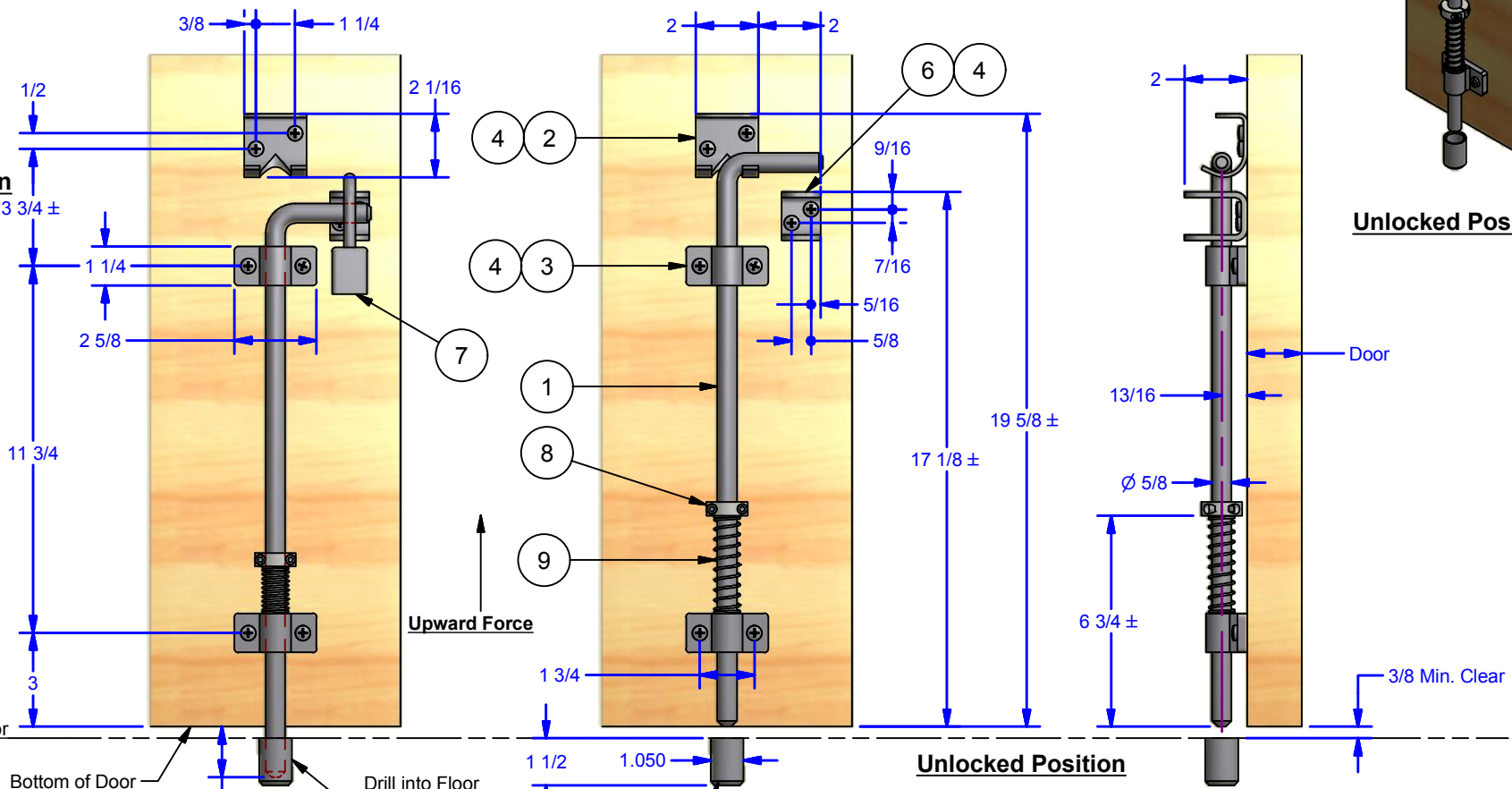
Parts List			
ITEM	QTY	DESCRIPTION	STOCK #
1	1	Cane, S.S.	
2	1	Cane Retainer, S.S.	
3	2	Guide Clip Weldment, S.S.	
4	8	Pan Head Phillips Sheet Metal Screw	1/4-14 x 1 1/4
5	1	Keeper for 0524.00021 Cane Bolt-SS #2B	0524.00042-S
6	1	Pad Lockable Assembly for 524 S.S. Cane Bolt	0524PL-S
7	1	Padlock (By Others) Max. Shackle Dia: 1/2" Min. Vertical Clear: 1-3/4", Min. Horiz Clear: 1"	
8	1	(2pc) Clamping Collar, 5/8" I.D.S.S.	
9	1	524P21SPD/SPU-S Spring, S.S.	



Locked Position



Unlocked Position



ALL DIMENSIONS IN INCHES		ID #:	0001948	STOCK PART #:	524P21SPU-S
THE INFORMATION CONTAINED IN THIS DRAWING IS THE SOLE PROPERTY OF CROWN INDUSTRIAL. ANY REPRODUCTION IN PART OR AS A WHOLE WITHOUT THE WRITTEN PERMISSION OF CROWN INDUSTRIAL IS PROHIBITED.					
DESCRIPTION:					
Cane Bolt with Hold Up Spring Assembly, Stainless Steel					
FINISH:					
Brushed					
				# PCS:	1
				REV:	A

CROWN INDUSTRIAL
So. San Francisco, Ca
(650) 952-5150
www.crown-industrial.com

DWG #: 524P21
DRAWN: BCM 7/31/2015
SHEET #7
File: 0000478.idw