

4

3

2

1

D

D

C

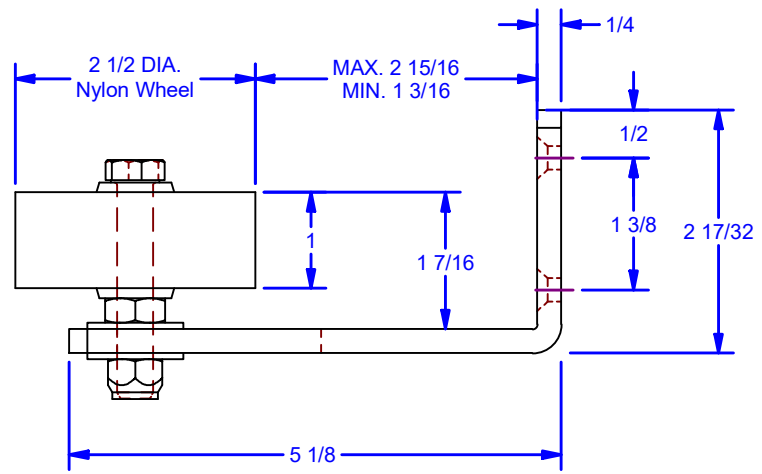
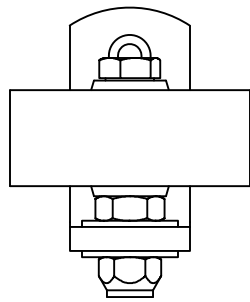
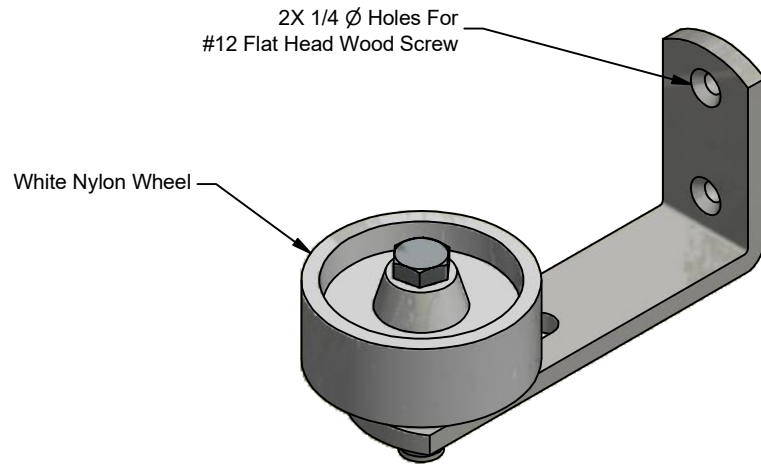
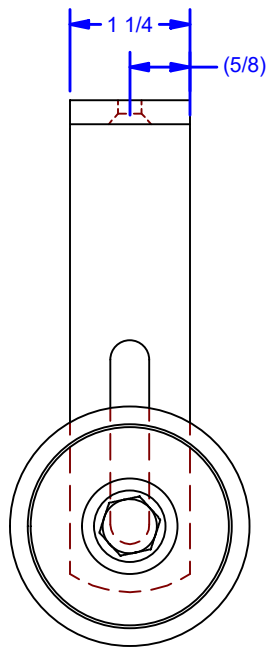
C

B

B

A

A



Available Finishes:
 0058.00002: Powder Coat Pebble Tan
 0058.00002SC: Powder Coat Black with White Nylon Wheel
 0058.00002ZC: Clear Zinc
 0058.00002SS: 304 Stainless Steel, 2B Mill Finish

DWG #: 58P2
 DRAWN:BCM 8/18/2009
 SHEET #1
 File: 0000631.idw

ALL DIMENSIONS IN INCHES

THE INFORMATION CONTAINED IN THIS DRAWING IS THE SOLE PROPERTY OF CROWN INDUSTRIAL. ANY REPRODUCTION IN PART OR AS A WHOLE WITHOUT THE WRITTEN PERMISSION OF CROWN INDUSTRIAL IS PROHIBITED.	ID #:	0000631	STOCK PART #:	0058.00002
	MATERIAL:			
DESCRIPTION: 58P2 Wall Mounted Stay Roller For 1-1/2" to 2-3/4" Thick Door				
FINISH:		# PCS:	REV:	



CROWN INDUSTRIAL
 So. San Francisco, Ca
 (650) 952-5150
 www.crown-industrial.com

4

3

2

1



4

3

2

1

D

D

C

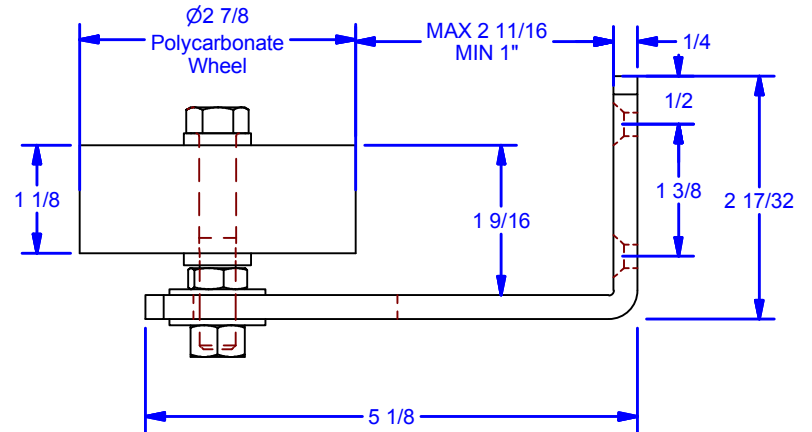
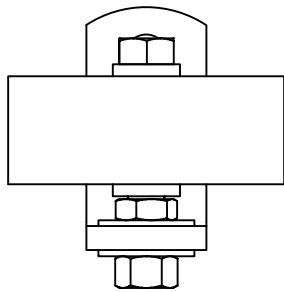
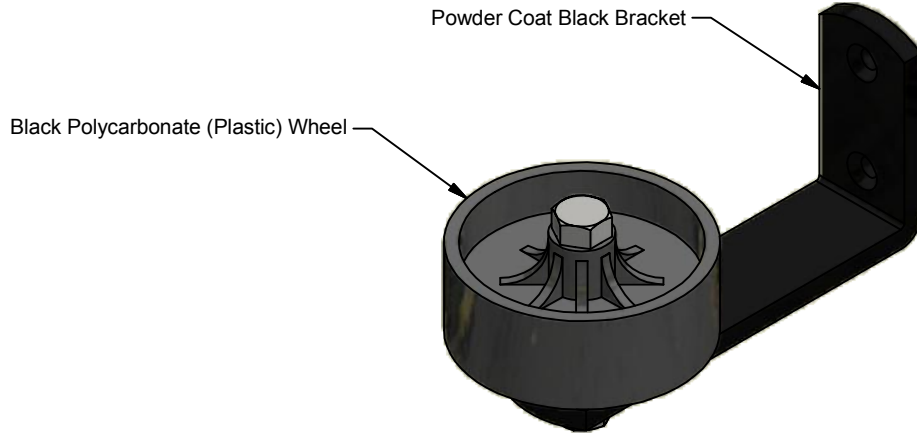
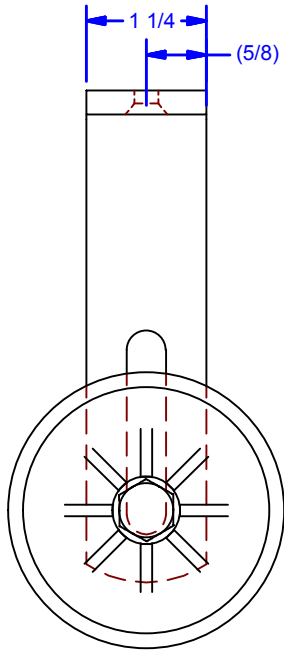
C

B

B

A

A



DWG #: 58P2
 DRAWN:BCM 9/1/2010
 SHEET #3
 File: 0000631.idw

ALL DIMENSIONS IN INCHES

THE INFORMATION CONTAINED IN THIS DRAWING IS THE SOLE PROPERTY OF CROWN INDUSTRIAL. ANY REPRODUCTION IN PART OR AS A WHOLE WITHOUT THE WRITTEN PERMISSION OF CROWN INDUSTRIAL IS PROHIBITED.	ID #:	0000857	STOCK PART #:	0058.00002SCBW
	MATERIAL:			
DESCRIPTION: SPL. 58P2 Wall Mounted Stay Roller For 3/4" to 2-5/8" Thick Door				
FINISH:		# PCS:	REV:	
Black				



CROWN INDUSTRIAL
 So. San Francisco, Ca
 (650) 952-5150
 www.crown-industrial.com

4

3

2

1

