

4

3

2

1

D

D

C

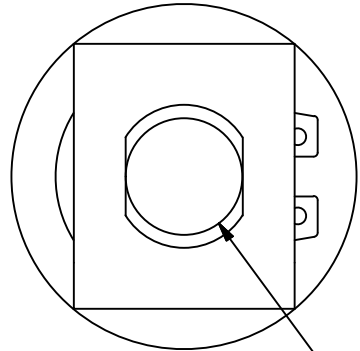
C

B

B

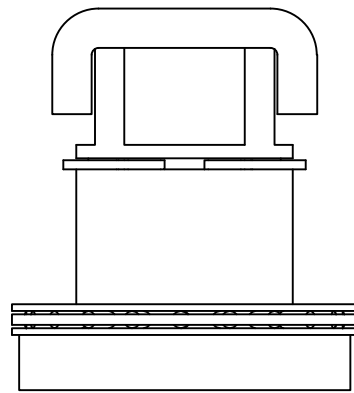
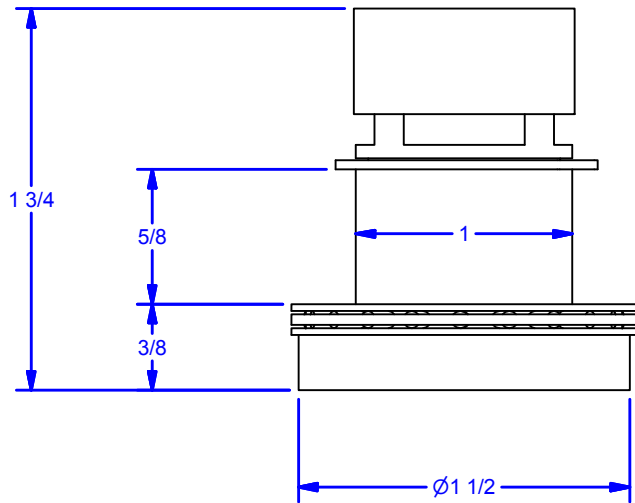
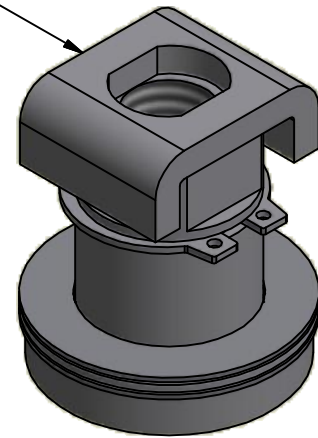
A

A



5/8-11 UNC - 2B

5B442K  
Keeper Trolley Lock



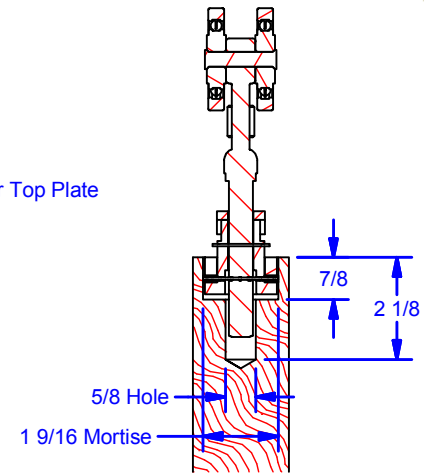
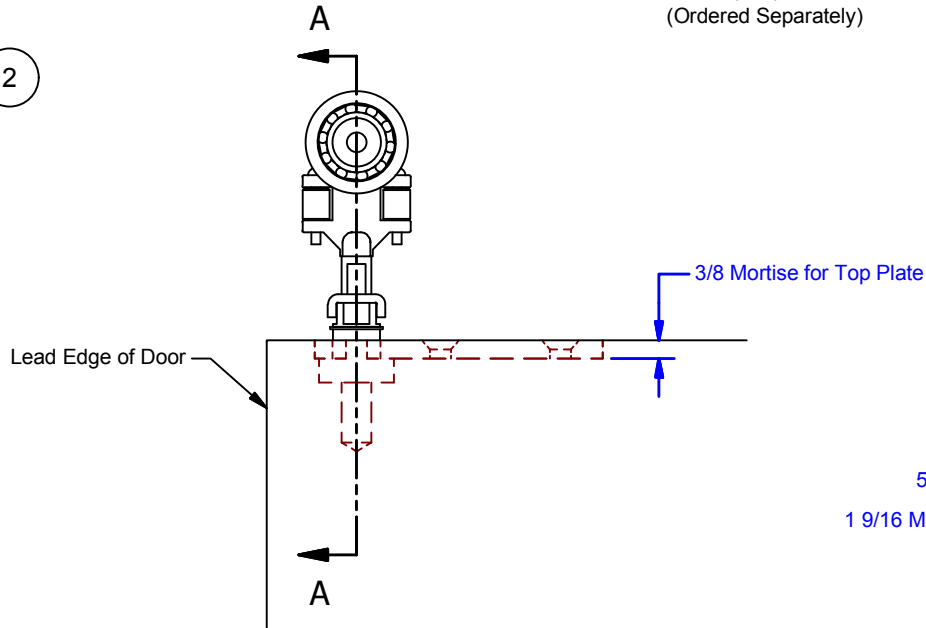
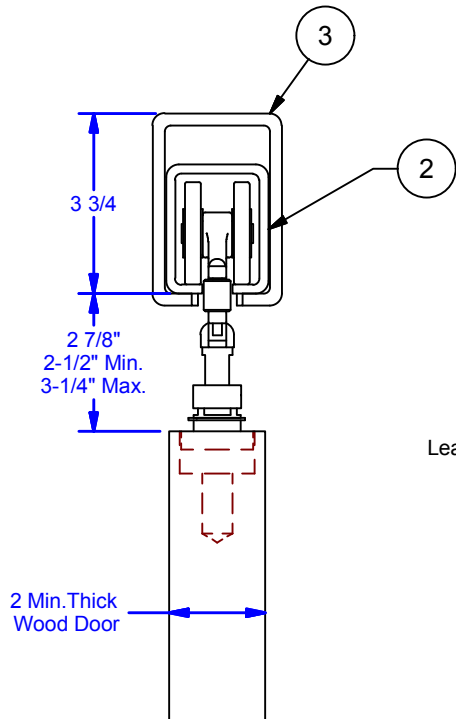
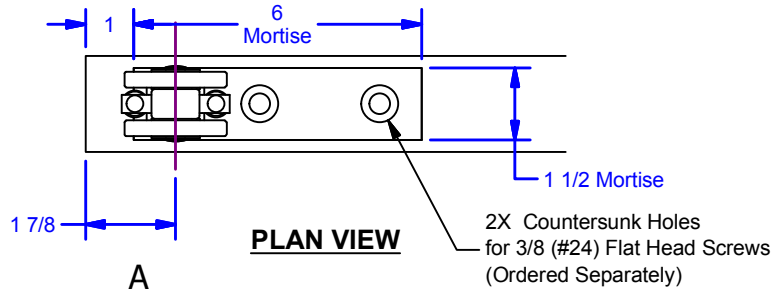
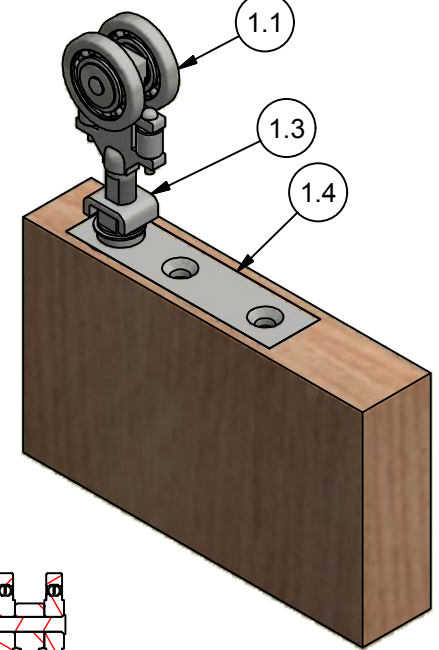
ALL DIMENSIONS IN INCHES

THE INFORMATION CONTAINED IN THIS DRAWING IS THE SOLE PROPERTY OF CROWN INDUSTRIAL. ANY REPRODUCTION IN PART OR AS A WHOLE WITHOUT THE WRITTEN PERMISSION OF CROWN INDUSTRIAL IS PROHIBITED.	ID #:	0000116	STOCK PART #:	5B442SW
	MATERIAL:			
DESCRIPTION: #5 Top Swivel w/ Keeper				
FINISH: Clear Zinc			# PCS:	1
			REV:	

DWG #: 0000108  
 DRAWN:BCM 8/27/2008  
 SHEET #5  
 File: 0000108.idw

**CROWN INDUSTRIAL**  
 So. San Francisco, Ca  
 (650) 952-5150  
 www.crown-industrial.com

Parts List				
ITEM	QTY	ID #	DESCRIPTION	STOCK PART #
1	1	0002797	#5 Two Wheel Trolley w. Keeper, Swivel, Top Plate	
1.1	1	0000108	#5 Two Wheel Trolley w/ Flattened Pendant	5B442
1.2	1	0000117	#5 Two Wheel Trolley Swivel, Top Plate	5B442T
1.3	1	0000116	#5 Top Swivel w/ Keeper	5B442SW
2	1	0000107	#5 Track	5P10'
3	1	0000724	#5 Overhead Bracket	5x18



**SECTION VIEW  
SHOWN W/ #5 TRACK**

**ELEVATION VIEW**

**SECTION A-A  
SCALE 1 / 4  
Wood Door Preparation**

**ALL DIMENSIONS IN INCHES**

THE INFORMATION CONTAINED IN THIS DRAWING IS THE SOLE PROPERTY OF CROWN INDUSTRIAL. ANY REPRODUCTION IN PART OR AS A WHOLE WITHOUT THE WRITTEN PERMISSION OF CROWN INDUSTRIAL IS PROHIBITED.	ID #:	STOCK PART #:
	0000551	
DESCRIPTION:	MATERIAL:	
#5 Two Wheel Trolley Swivel Assy		
FINISH:	# PCS:	REV:
	1	A



**CROWN INDUSTRIAL**  
So. San Francisco, Ca  
(650) 952-5150  
www.crown-industrial.com