

4

3

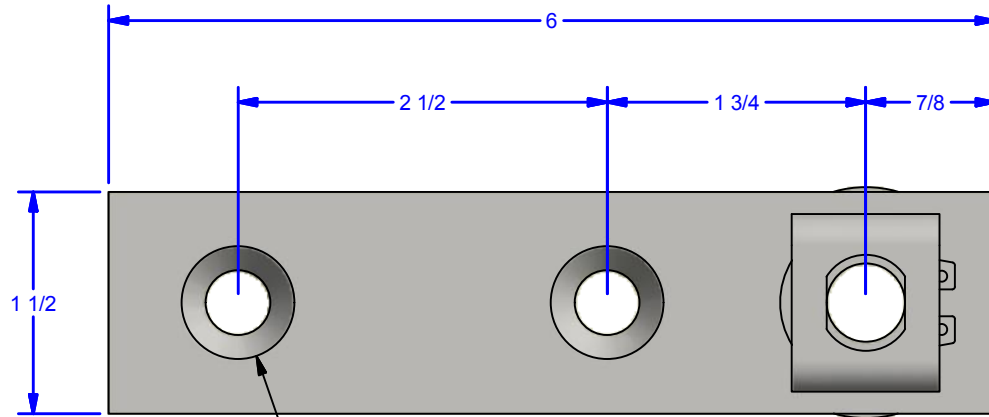


2

1

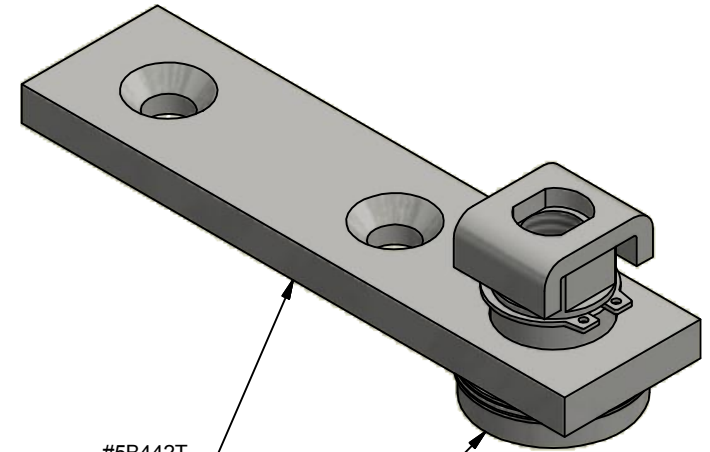
D

D



Countersunk Hole
For 3/8 Flat Head Machine Screw (82)

#5 Two Wheel Trolley Swivel, Top Plate



#5B442T

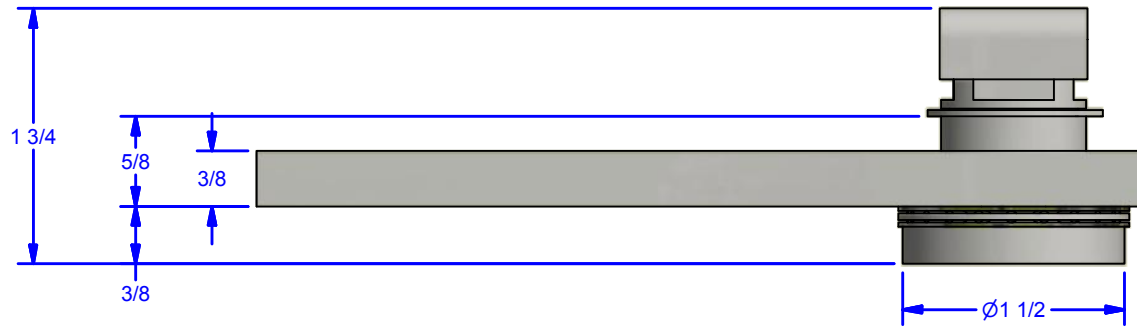
#5B442SW
Swivel w/ Keeper

C

C

B

B



A

A

DWG #: 0000108
DRAWN:BCM 5/14/2015
SHEET #3
File: 0000108.idw

ALL DIMENSIONS IN INCHES

THE INFORMATION CONTAINED IN THIS DRAWING IS THE SOLE PROPERTY OF CROWN INDUSTRIAL. ANY REPRODUCTION IN PART OR AS A WHOLE WITHOUT THE WRITTEN PERMISSION OF CROWN INDUSTRIAL IS PROHIBITED.	ID #:	0001996	STOCK PART #:	5B442SWTK
	MATERIAL:	Steel		
DESCRIPTION: Keeper, Swivel, & Top Plate-Zinc				
FINISH:	Clear Zinc	# PCS:	REV:	



CROWN INDUSTRIAL

So. San Francisco, Ca
(650) 952-5150

www.crown-industrial.com

4

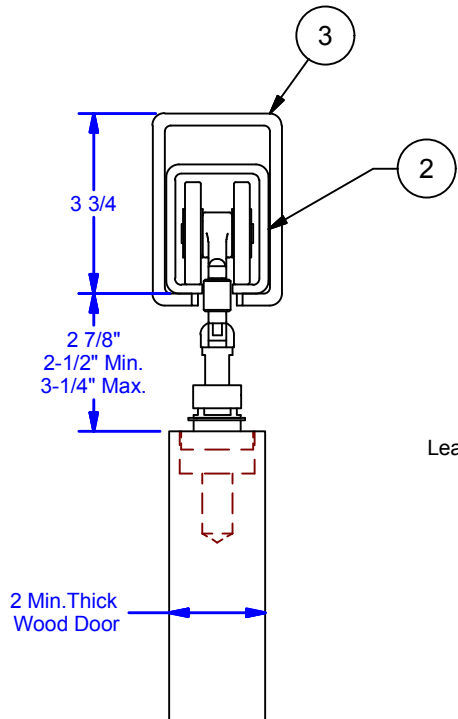
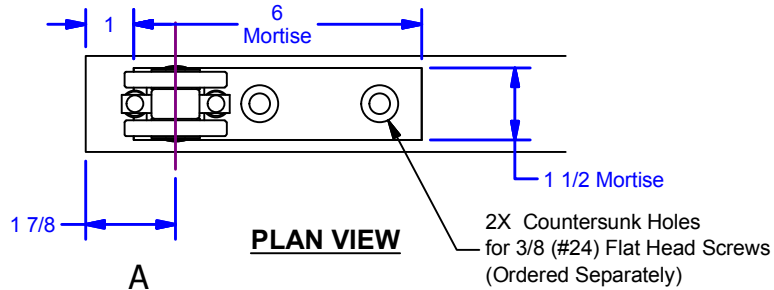
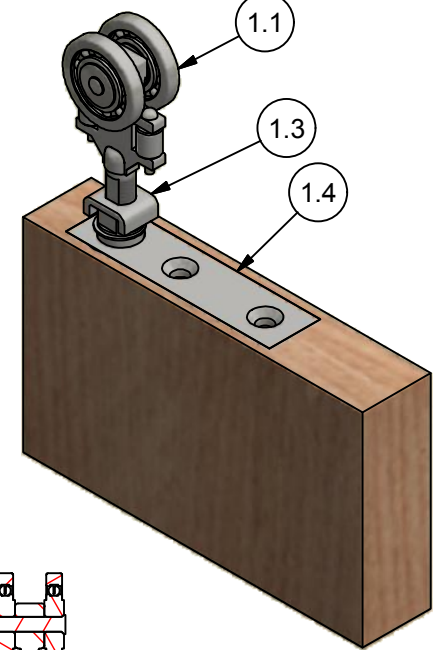
3



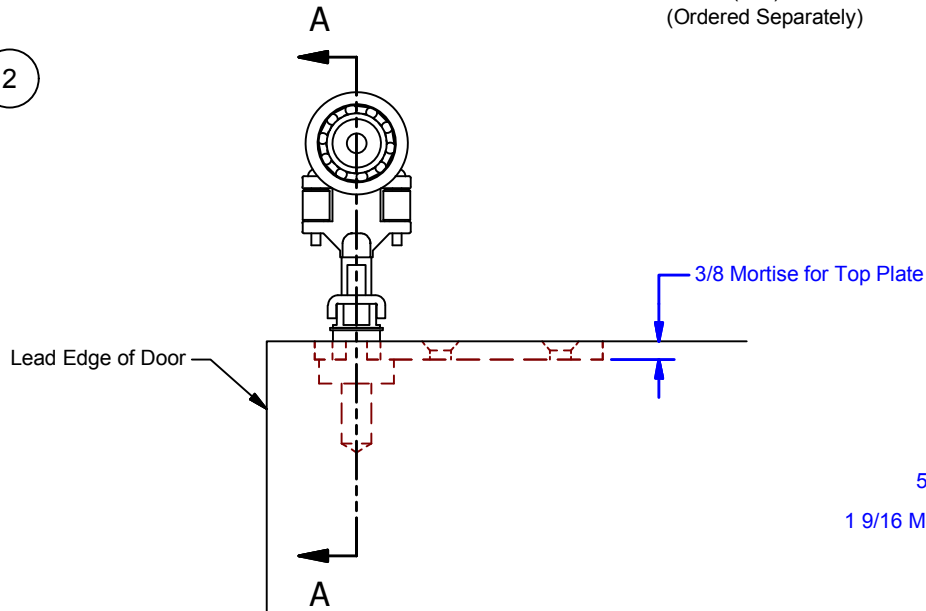
2

1

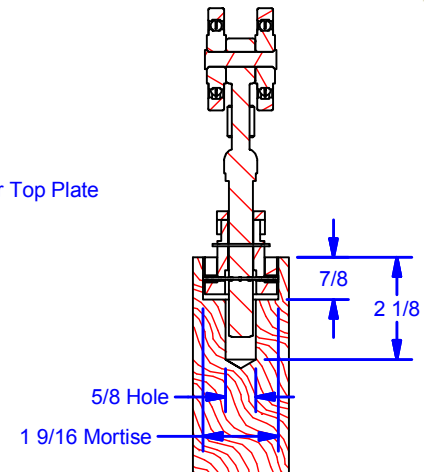
Parts List				
ITEM	QTY	ID #	DESCRIPTION	STOCK PART #
1	1	0002797	#5 Two Wheel Trolley w. Keeper, Swivel, Top Plate	
1.1	1	0000108	#5 Two Wheel Trolley w/ Flattened Pendant	5B442
1.2	1	0000117	#5 Two Wheel Trolley Swivel, Top Plate	5B442T
1.3	1	0000116	#5 Top Swivel w/ Keeper	5B442SW
2	1	0000107	#5 Track	5P10'
3	1	0000724	#5 Overhead Bracket	5x18



**SECTION VIEW
SHOWN W/ #5 TRACK**



ELEVATION VIEW



**SECTION A-A
SCALE 1 / 4
Wood Door Preparation**

ALL DIMENSIONS IN INCHES

THE INFORMATION CONTAINED IN THIS DRAWING IS THE SOLE PROPERTY OF CROWN INDUSTRIAL. ANY REPRODUCTION IN PART OR AS A WHOLE WITHOUT THE WRITTEN PERMISSION OF CROWN INDUSTRIAL IS PROHIBITED.	ID #:	STOCK PART #:
	0000551	
DESCRIPTION:	#5 Two Wheel Trolley Swivel Assy	
FINISH:	# PCS:	REV:
	1	A



CROWN INDUSTRIAL
So. San Francisco, Ca
(650) 952-5150
www.crown-industrial.com

4

3

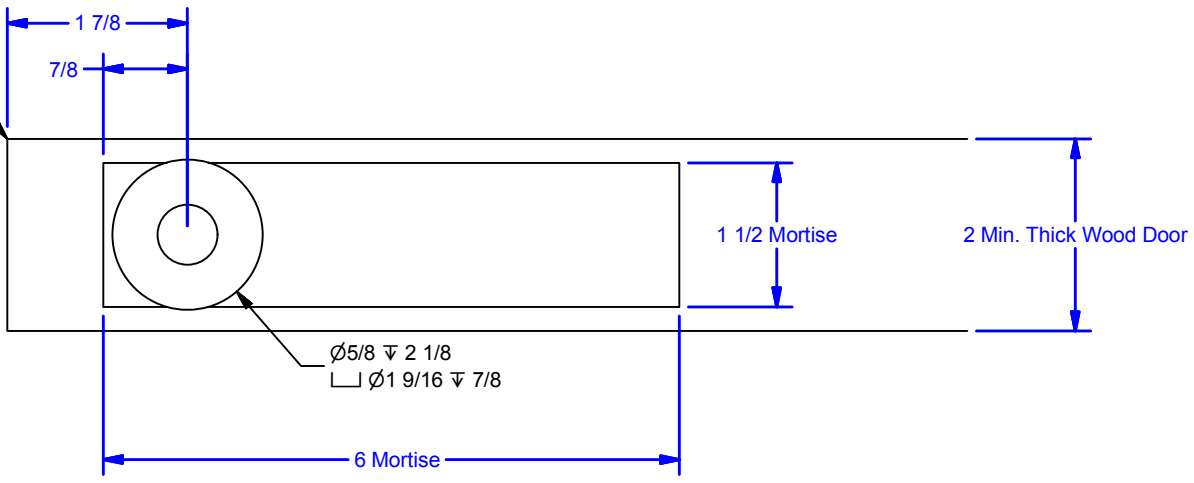
2

1

D

D

May Need to Fillet
Corners of Lead Edge



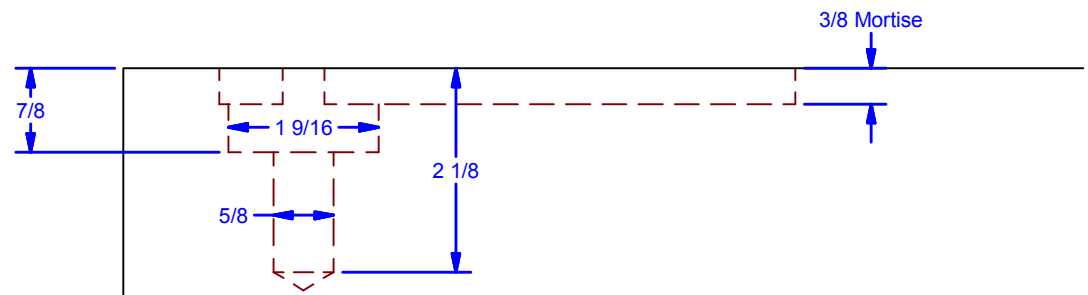
C

C



B

B



A

A

DWG #: 0000108
 DRAWN: BCM 5/8/2009
 SHEET #3
 File: 0000108.idw

ALL DIMENSIONS IN INCHES

THE INFORMATION CONTAINED IN THIS DRAWING IS THE SOLE PROPERTY OF CROWN INDUSTRIAL. ANY REPRODUCTION IN PART OR AS A WHOLE WITHOUT THE WRITTEN PERMISSION OF CROWN INDUSTRIAL IS PROHIBITED.	ID #:	0000551	STOCK PART #:	
	MATERIAL:		Wood (Birch)	
DESCRIPTION: Wood Door Prep. For 5B442SWTK				
FINISH:		# PCS:	REV:	



CROWN INDUSTRIAL
 So. San Francisco, Ca
 (650) 952-5150
 www.crown-industrial.com

4

3

2

1



4

3

2

1

D

D

C

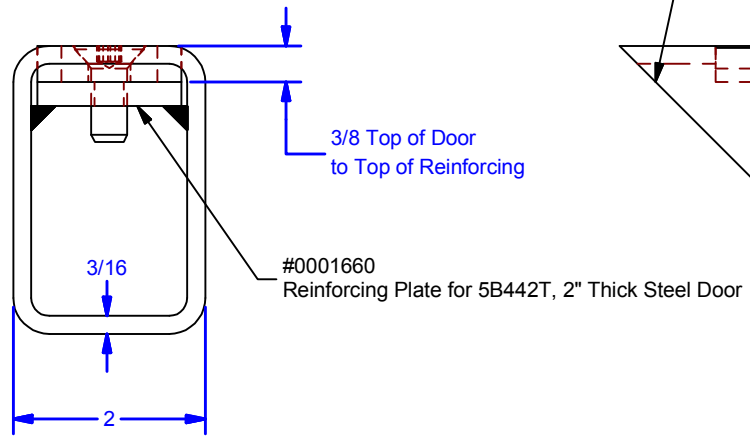
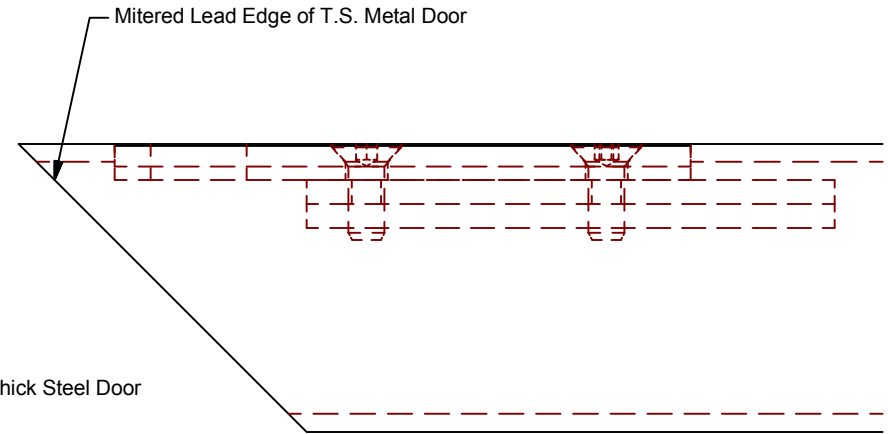
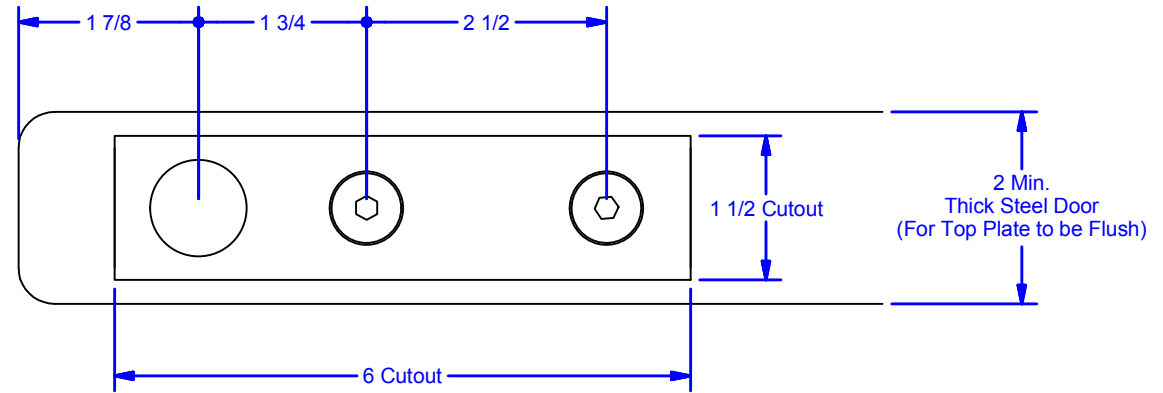
C

B

B

A

A



ALL DIMENSIONS IN INCHES

THE INFORMATION CONTAINED IN THIS DRAWING IS THE SOLE PROPERTY OF CROWN INDUSTRIAL. ANY REPRODUCTION IN PART OR AS A WHOLE WITHOUT THE WRITTEN PERMISSION OF CROWN INDUSTRIAL IS PROHIBITED.	ID #: 0001661	STOCK PART #:
	MATERIAL: Welded Steel Mild	
DESCRIPTION: Steel Door Prep. for #5B442SWTK		
FINISH:	# PCS:	REV:



CROWN INDUSTRIAL
 So. San Francisco, Ca
 (650) 952-5150
 www.crown-industrial.com

DWG #: 0000108
 DRAWN: BCM 5/19/2014
 SHEET #4
 File: 0000108.idw

4

3

2

1

