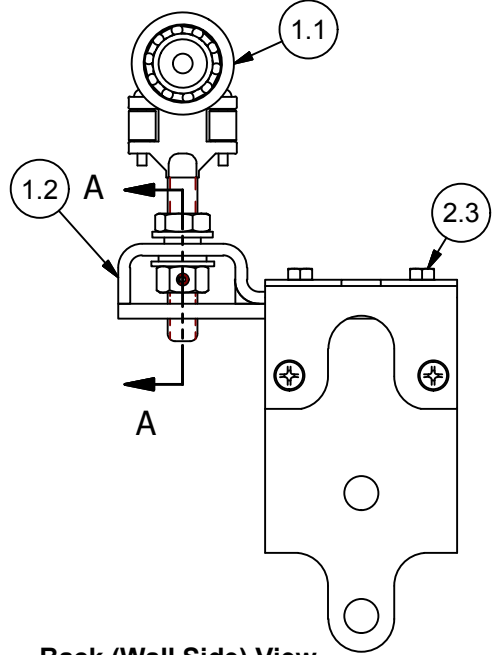
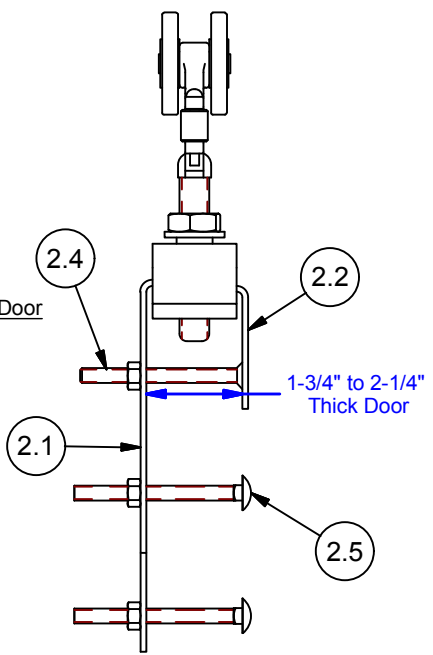
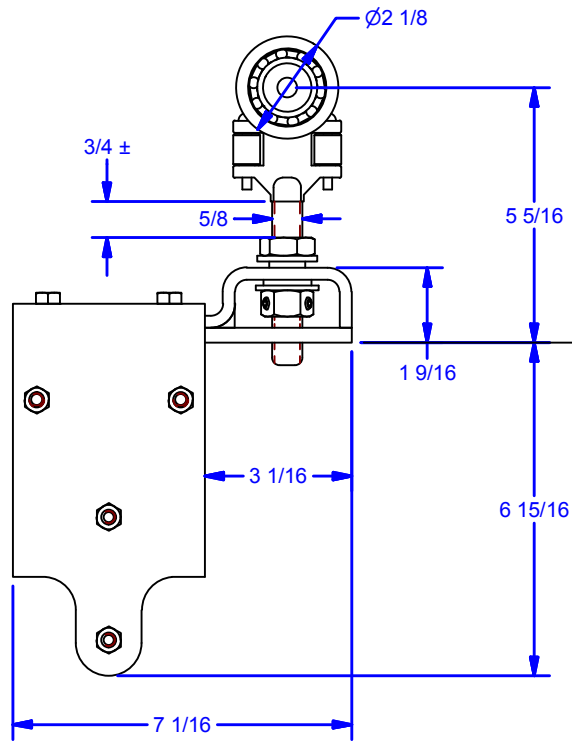
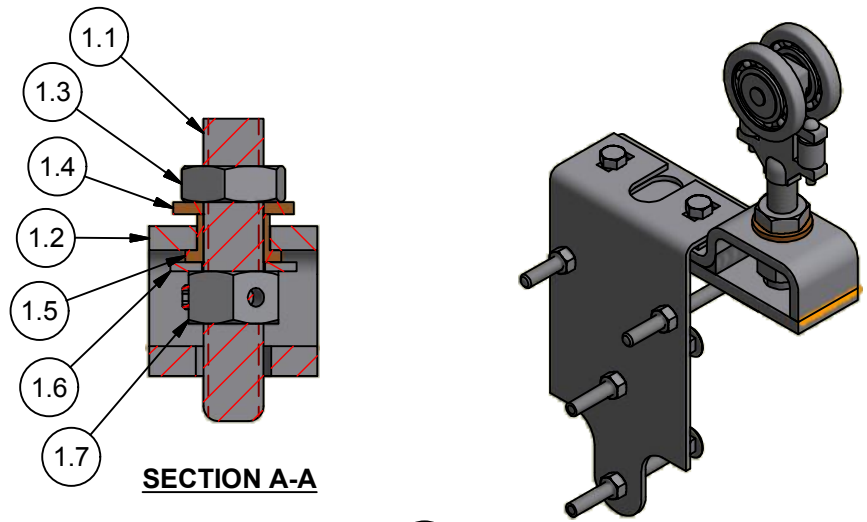


Parts List				
ITEM	QTY	PART #	DESCRIPTION	STOCK #
1	1	0002237	Roller Assembly	
1.1	1	0000681	#5 Two Wheel Trolley w/ Std. Pendant	5B
1.2	1	0000684	Support Bar Weldment	
1.3	1	5/8 - 11 UNC JN	Jam Hex Nut - Grade 5, Zinc	
1.4	1	0000689	5/8" i.d. x 1-1/4" o.d. x 1/8" thick Thrust Bearing	
1.5	1	0000688	5/8" x 3/4" x 1/2" Flange Bearing	
1.6	1	SAE FW 5/8 - narrow - Type A zinc	SAE Flat Washer-zinc	
1.7	1	0000687	5/8"-11 Hex Nut w/ (3 ea.) 1/4-20x1/4 Setscrews	
2	1	0002304	Apron Assembly	
2.1	1	0000260	#6 Apron Front Plate, 1-3/4" to 2-1/4"	
2.2	1	0000176	Apron, 1-3/4" to 2-1/4" Back Plate	6P3A
2.3	2	HHMB 5/16-18 UNC - 1.25 Zinc -5	Hex Head Machine Bolt -Grade 5, Zinc	
2.4	2	(FHPHMS) 5/16-18 x 3 1/2 Zinc	Flat Head Phillips Head Machine Screw	
2.5	2	0000355	5/16"-18 x 3-1/2" Carriage Bolt *fully threaded	
2.6	6	HN 5/16 - 18 Zinc-5	Hex Nut - Grade 5, Zinc	



DWG #: 5P-1975
 DRAWN:BCM 10/5/2009
 SHEET #1
 File: 0000683.idw

ALL DIMENSIONS IN INCHES			
THE INFORMATION CONTAINED IN THIS DRAWING IS THE SOLE PROPERTY OF CROWN INDUSTRIAL. ANY REPRODUCTION IN PART OR AS A WHOLE WITHOUT THE WRITTEN PERMISSION OF CROWN INDUSTRIAL IS PROHIBITED.	PART #:	0000683-01	STOCK #:
	MATERIAL:		5P-1975-LH
DESCRIPTION: Two Wheel GH P1975 BB Hanger, 1-1/2" to 2-1/4", (Left Hand)			
FINISH:		# PCS:	REV:
PTD.		1	

CROWN INDUSTRIAL
 So. San Francisco, Ca
 (650) 952-5150
 www.crown-industrial.com

4

3

2

1

D

D

C

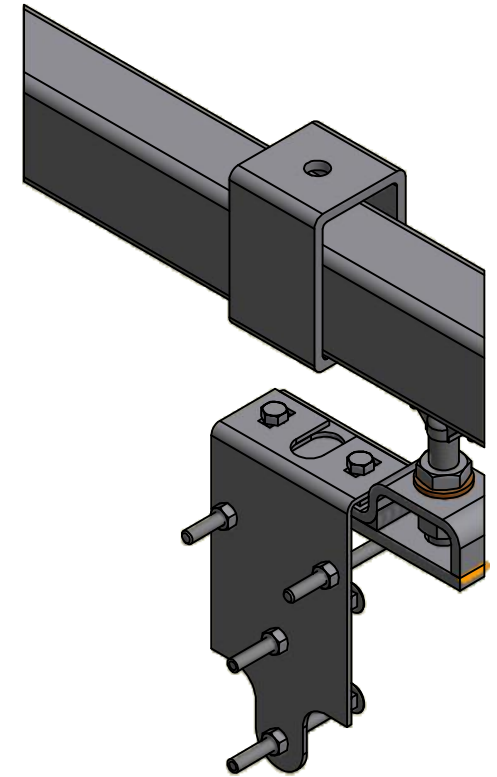
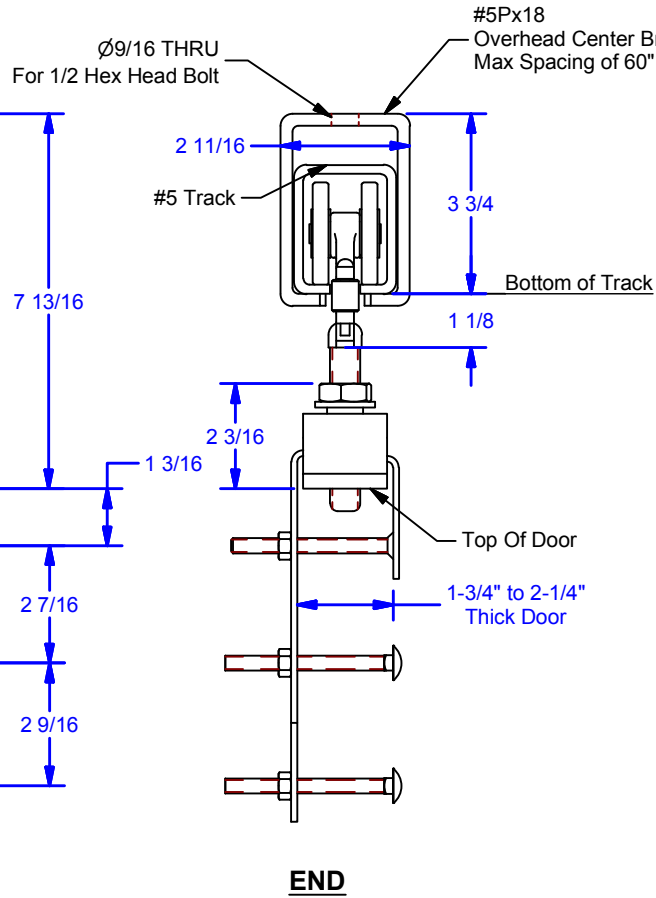
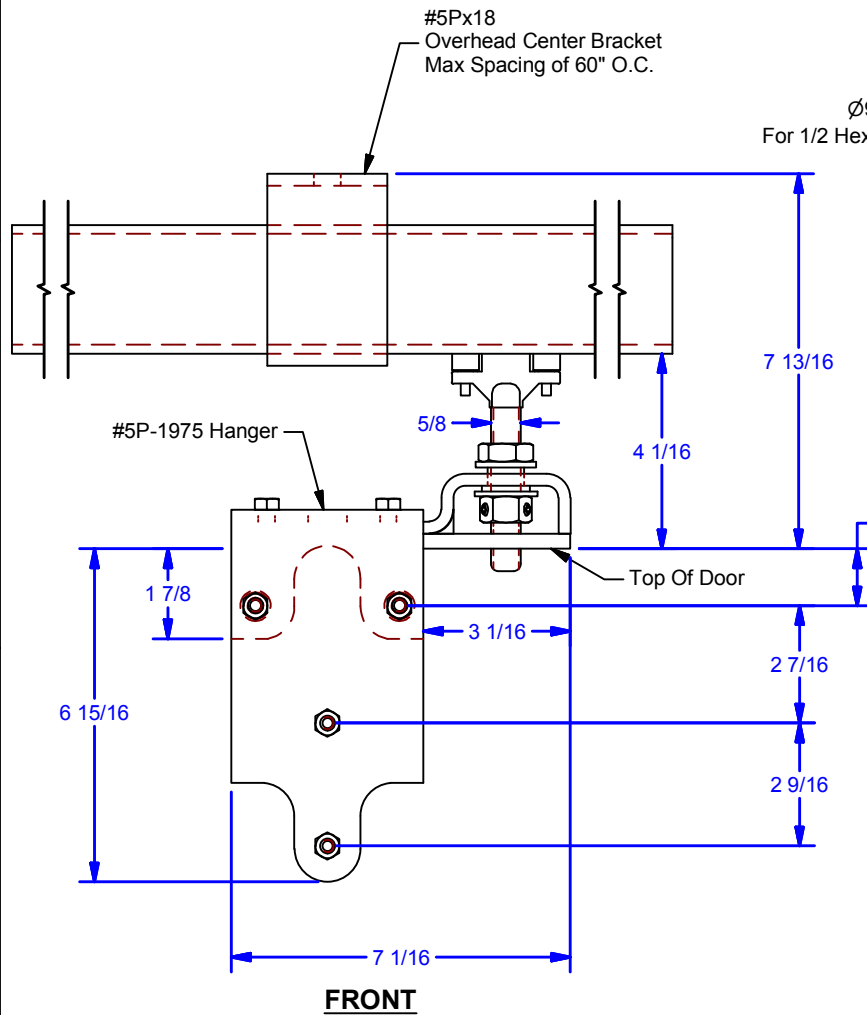
C

B

B

A

A



ALL DIMENSIONS IN INCHES

THE INFORMATION CONTAINED IN THIS DRAWING IS THE SOLE PROPERTY OF CROWN INDUSTRIAL. ANY REPRODUCTION IN PART OR AS A WHOLE WITHOUT THE WRITTEN PERMISSION OF CROWN INDUSTRIAL IS PROHIBITED.	PART #:	STOCK #:
	0001591	5P-1975
DESCRIPTION:	MATERIAL:	
Two Wheel GH P1975 BB Hagner w/ Overhead Bracket & Track		
FINISH:	# PCS:	REV:
	1	



CROWN INDUSTRIAL
 So. San Francisco, Ca
 (650) 952-5150
 www.crown-industrial.com

DWG #: 5P-1975
 DRAWN:BCM 2/13/2014
 SHEET #2
 File: 0000683.idw

4

3

2

1

4

3

2

1

D

D

C

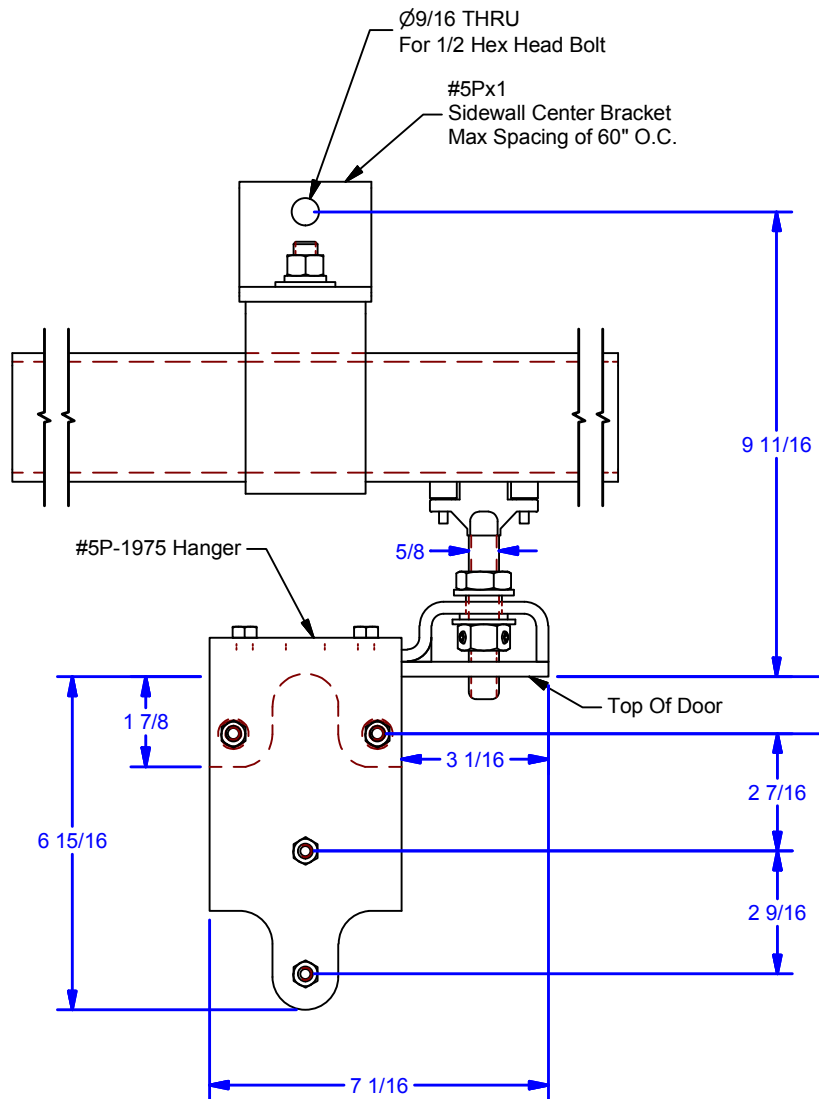
C

B

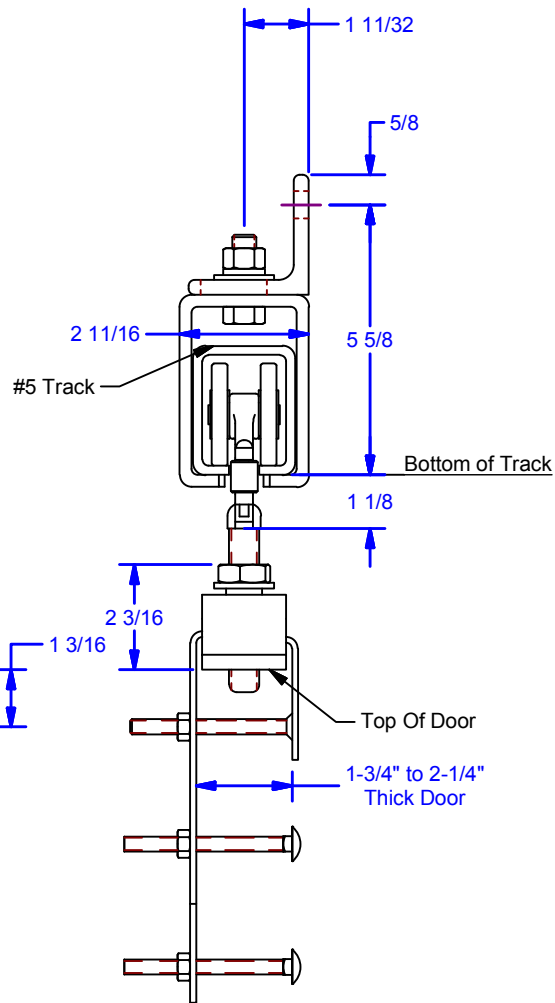
B

A

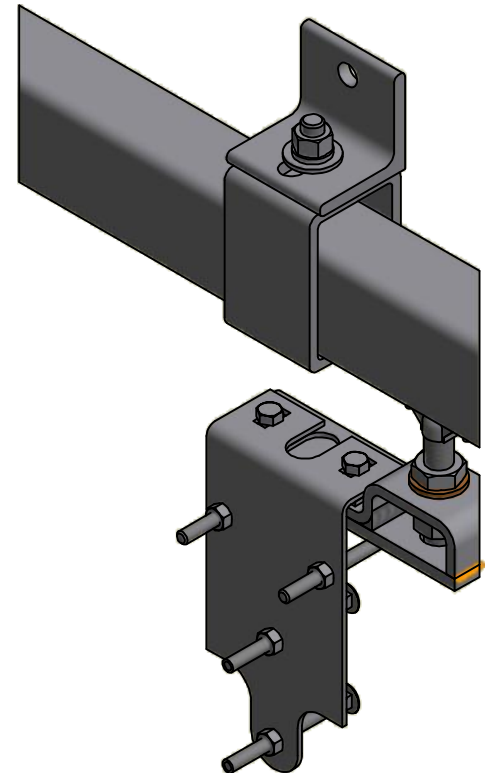
A



FRONT



END



DWG #: 5P-1975
 DRAWN:BCM 2/13/2014
 SHEET #3
 File: 0000683.idw

ALL DIMENSIONS IN INCHES

THE INFORMATION CONTAINED IN THIS DRAWING IS THE SOLE PROPERTY OF CROWN INDUSTRIAL. ANY REPRODUCTION IN PART OR AS A WHOLE WITHOUT THE WRITTEN PERMISSION OF CROWN INDUSTRIAL IS PROHIBITED.	PART #:	STOCK #:
	0001591	5P-1975
DESCRIPTION:	MATERIAL:	
Two Wheel GH P1975 BB Hagner w/ Sidewall Bracket & Track		
FINISH:	# PCS:	REV:
	1	



CROWN INDUSTRIAL
 So. San Francisco, Ca
 (650) 952-5150
 www.crown-industrial.com

4

3

2

1