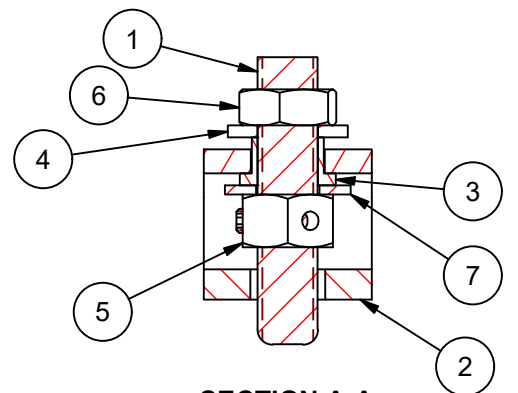
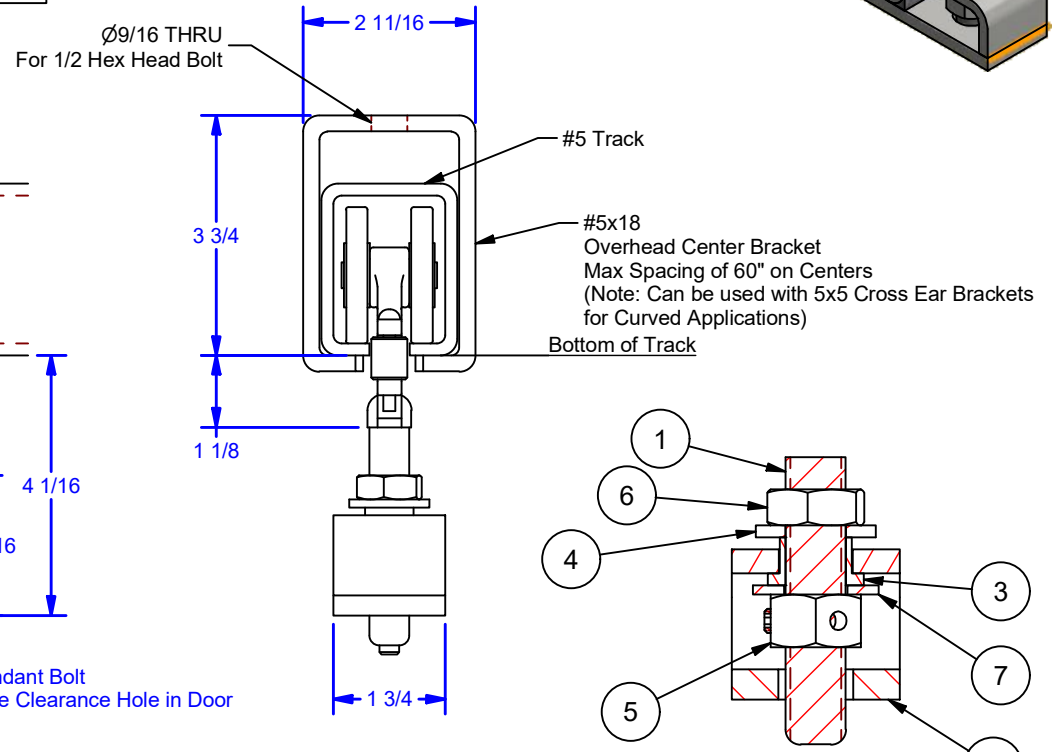
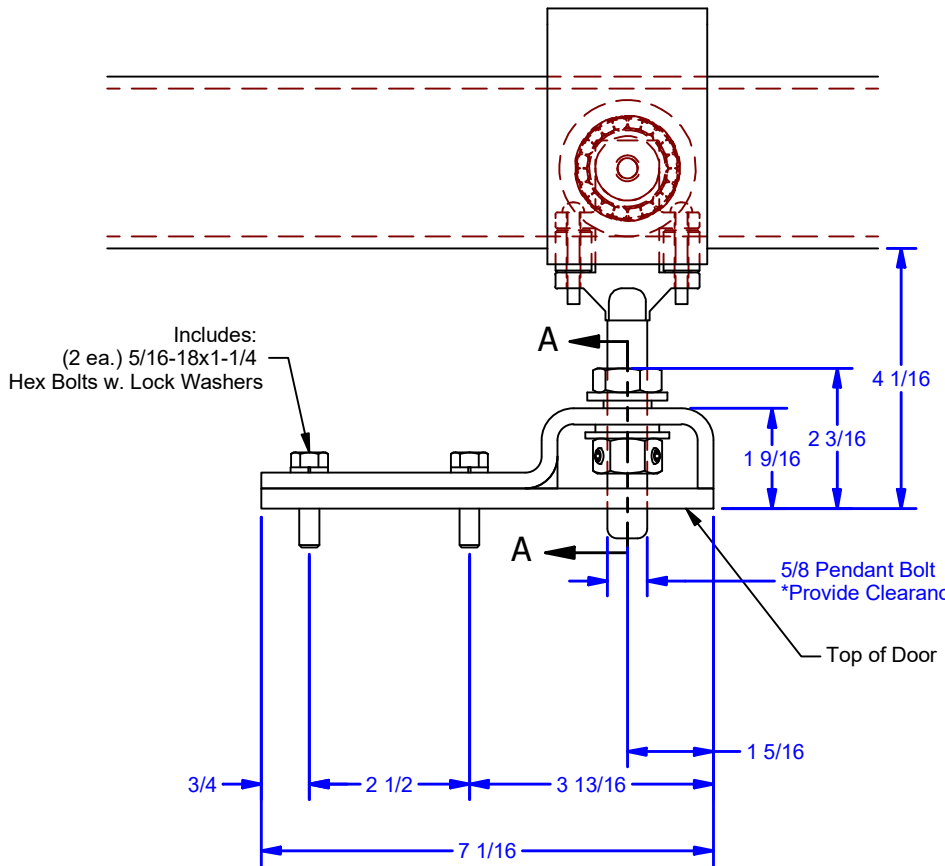
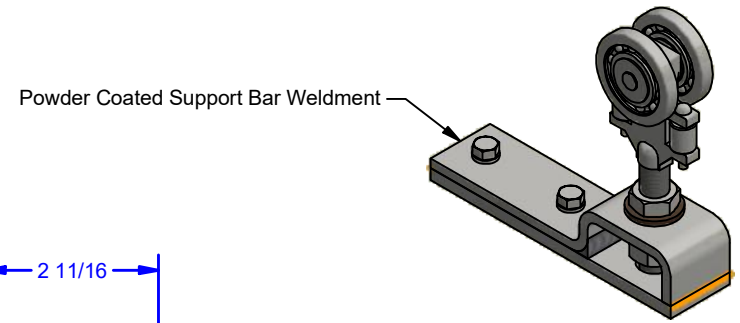


Parts List			
ITEM	QTY	ID #	DESCRIPTION
1	1	0000681	#5 Two Wheel Trolley w/ Std. Pendant
2	1	0000684	Support Bar Weldment
3	1	0000688	5/8" x 3/4" x 1/2" Flange Bearing
4	1	0000689	5/8" i.d. x 1-1/4" o.d. x 1/8" thick Thrust Bearing
5	1	0000687	5/8"-11 Hex Nut w/ (3 ea.) 1/4-20x1/4 Setscrews
6	1	5/8 - 11 UNC JN	Jam Hex Nut - Grade 5, Zinc
7	1	SAE FW 5/8 - narrow - Type A zinc	SAE Flat Washer-zinc
8	2	5/16 LW Zinc	Lock Washer, Zinc
9	2	HHMB 5/16-18 UNC - 1.25 -5 Zinc	Hex Head Machine Bolt -Grade 5, Zinc



**ALL DIMENSIONS IN INCHES**

THE INFORMATION CONTAINED IN THIS DRAWING IS THE SOLE PROPERTY OF CROWN INDUSTRIAL. ANY REPRODUCTION IN PART OR AS A WHOLE WITHOUT THE WRITTEN PERMISSION OF CROWN INDUSTRIAL IS PROHIBITED.	PART #:	STOCK #:
	0001591	5P-3053
DESCRIPTION:	MATERIAL:	
Two Wheel Ball Bearing Truck w. Top Plate (Pair)		
FINISH:	# PCS:	REV:



**CROWN INDUSTRIAL**  
So. San Francisco, Ca  
(650) 952-5150  
www.crown-industrial.com

DWG #: 5P-1975  
DRAWN:BCM 2/13/2014  
SHEET #4  
File: 0000683.idw