

DWG #: 0002059  
 DRAWN:BCM 6/19/2013  
 SHEET #8  
 File: 0002059.idw

**ALL DIMENSIONS IN INCHES**

THE INFORMATION CONTAINED IN THIS DRAWING IS THE SOLE PROPERTY OF CROWN INDUSTRIAL. ANY REPRODUCTION IN PART OR AS A WHOLE WITHOUT THE WRITTEN PERMISSION OF CROWN INDUSTRIAL IS PROHIBITED.	ID #:	0001466	STOCK PART #:	5PX5-SE-WELD
	MATERIAL:	Welded Steel Mild		
DESCRIPTION: Cross Ear Bracket w/ Soffit Clips (Welded)				
FINISH:	Painted	# PCS:	REV:	A



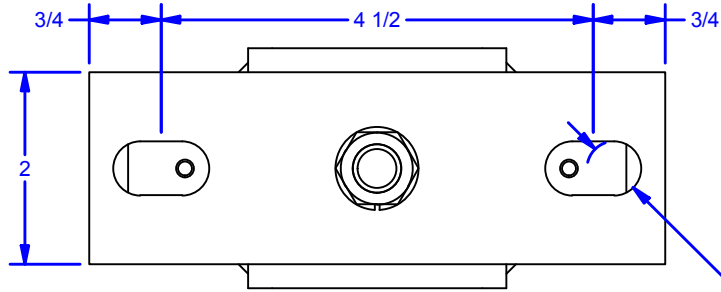
**CROWN INDUSTRIAL**  
 So. San Francisco, Ca  
 (650) 952-5150  
 www.crown-industrial.com

4

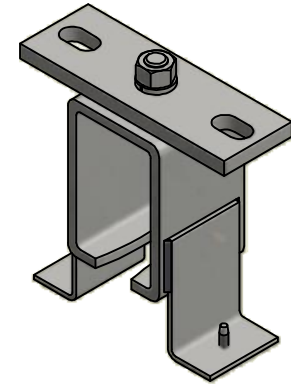
3

2

1



Ø9/16  
For 1/2" Fastener

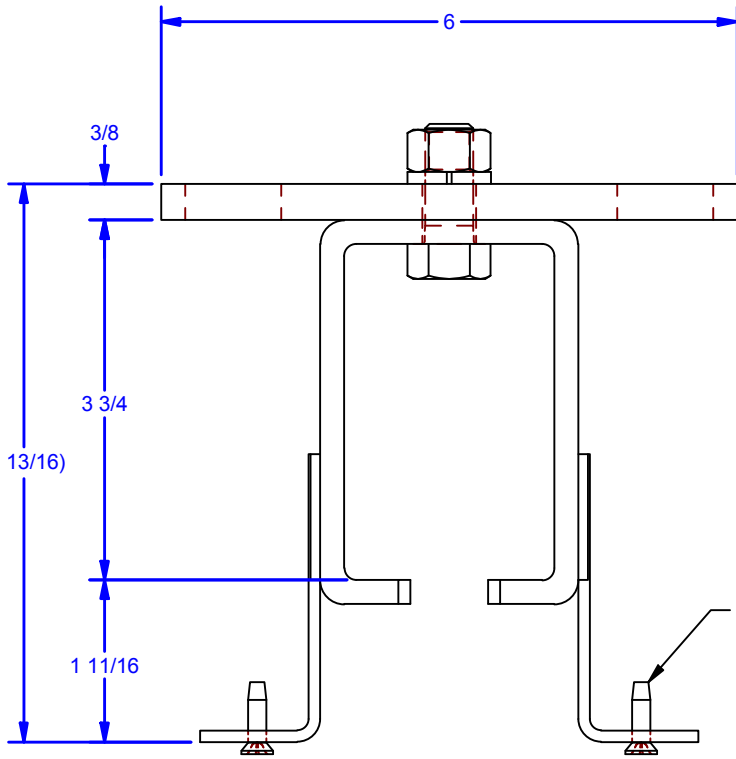


D

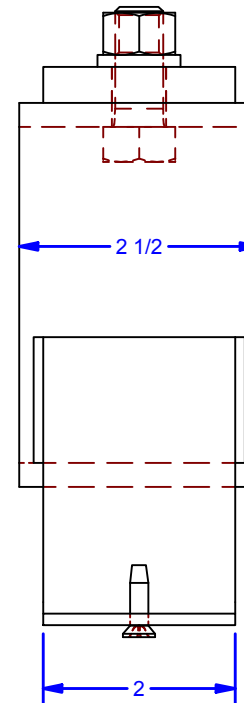
D

C

C



(2 ea) #10-24x3/4"  
Flat Head Phillips Type-F, Zinc



B

B

B

B

A

A

DWG #: 0002059  
DRAWN:BCM 3/14/2019  
SHEET #9  
File: 0002059.idw

4

3

2

1

**ALL DIMENSIONS IN INCHES**

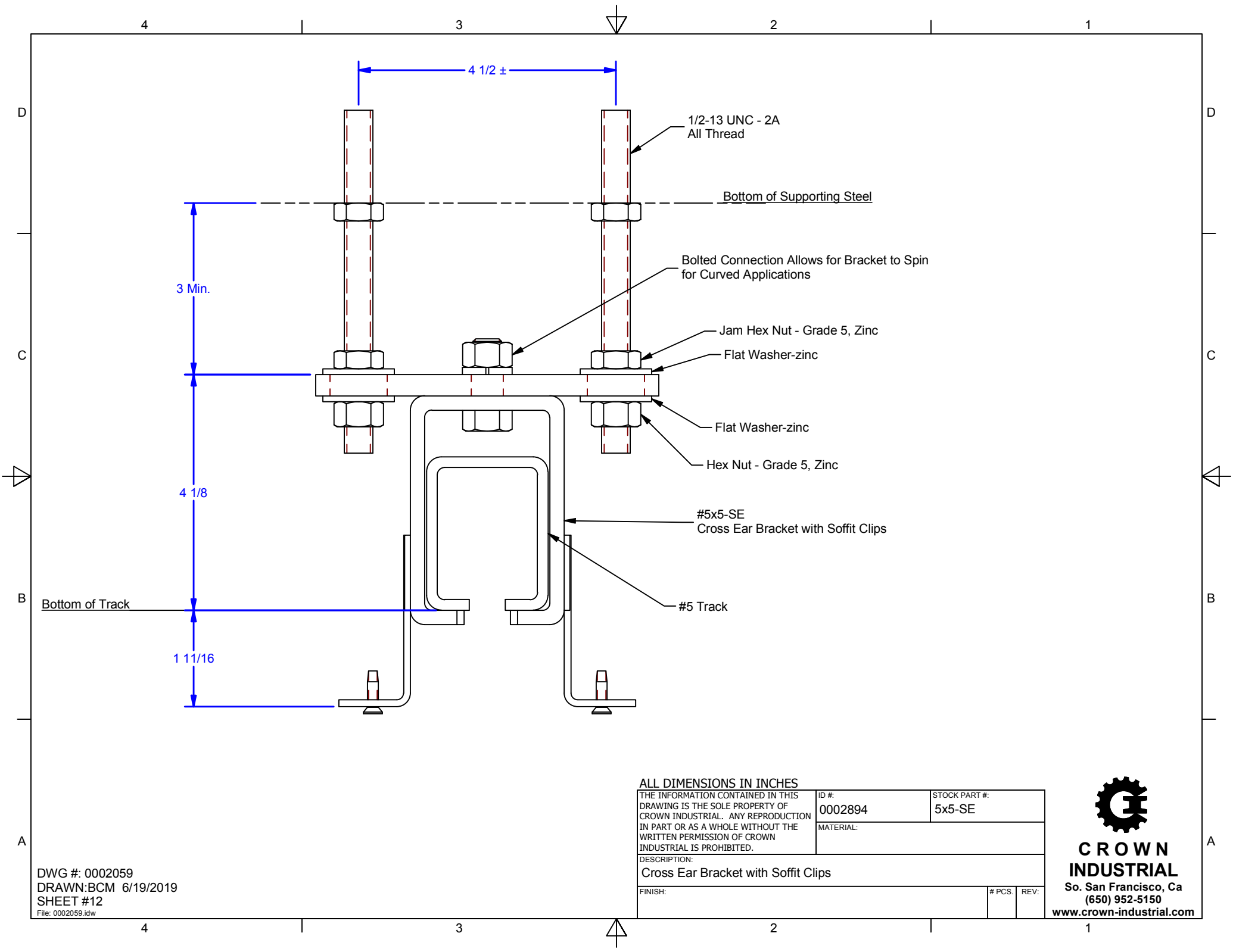
THE INFORMATION CONTAINED IN THIS DRAWING IS THE SOLE PROPERTY OF CROWN INDUSTRIAL. ANY REPRODUCTION IN PART OR AS A WHOLE WITHOUT THE WRITTEN PERMISSION OF CROWN INDUSTRIAL IS PROHIBITED.	ID #:	0002836	STOCK PART #:	5Px5-SE-BOLT
	MATERIAL:			
DESCRIPTION: Cross Ear Bracket w/ Soffit Clips (Bolted Option)				
FINISH:	Painted	# PCS:	REV:	



**CROWN INDUSTRIAL**

So. San Francisco, Ca  
(650) 952-5150

www.crown-industrial.com



DWG #: 0002059  
 DRAWN:BCM 6/19/2019  
 SHEET #12  
 File: 0002059.idw

**ALL DIMENSIONS IN INCHES**

THE INFORMATION CONTAINED IN THIS DRAWING IS THE SOLE PROPERTY OF CROWN INDUSTRIAL. ANY REPRODUCTION IN PART OR AS A WHOLE WITHOUT THE WRITTEN PERMISSION OF CROWN INDUSTRIAL IS PROHIBITED.	ID #:	0002894	STOCK PART #:	5x5-SE
	MATERIAL:			
DESCRIPTION: Cross Ear Bracket with Soffit Clips				
FINISH:			# PCS:	REV:



**CROWN INDUSTRIAL**  
 So. San Francisco, Ca  
 (650) 952-5150  
 www.crown-industrial.com