

4

3

2

1

D

D

C

C

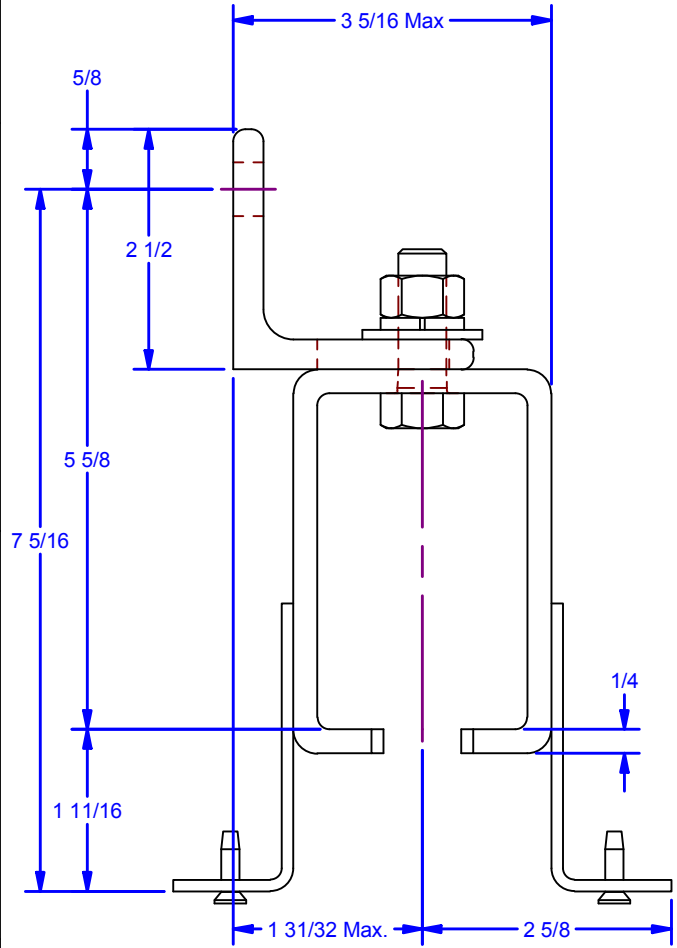
B

B

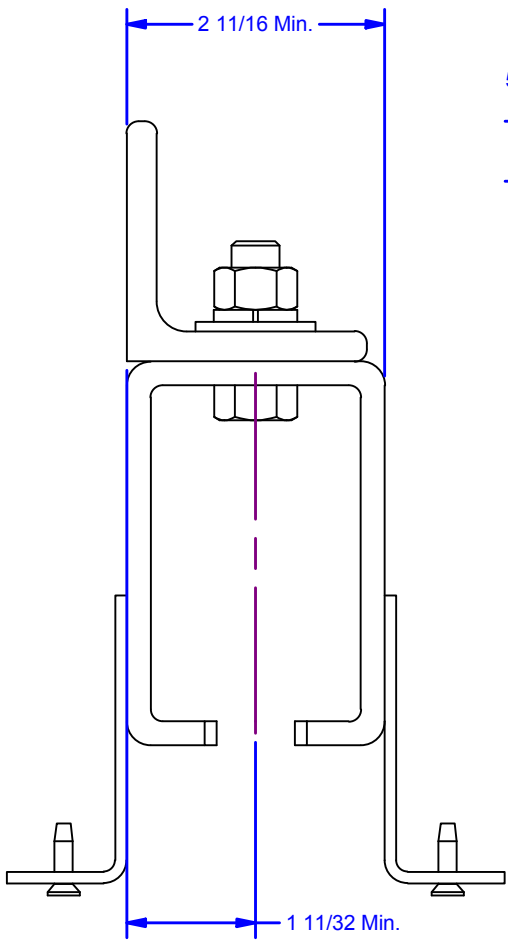
A

A

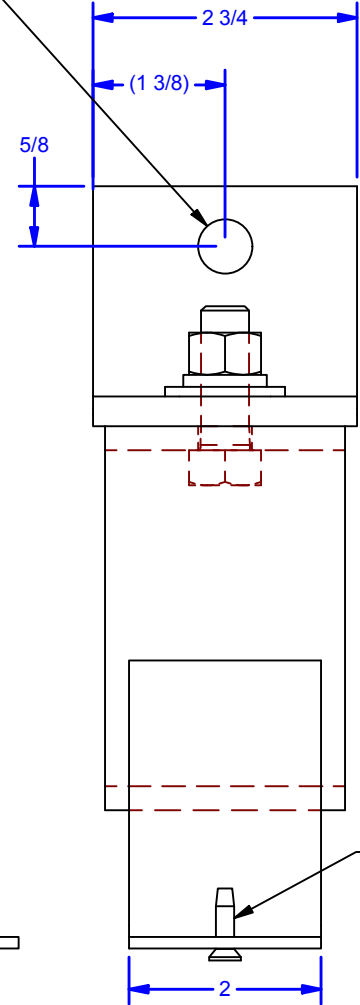
Ø9/16 THRU
For 1/2 Hex Head Bolt



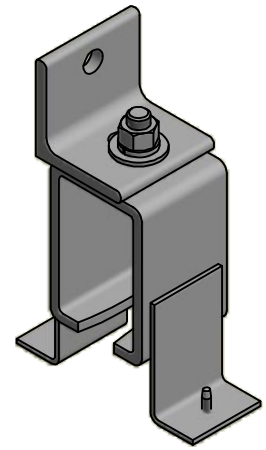
Max



Min



Side



(2 ea) #10-24 x 3/4"
Flat Head Phillips Type -F, Zinc

Note: Maximum bracket spacing is 60" on center

DWG #: 0000902
DRAWN:BCM 6/20/2018
SHEET #2
File: 0000902.idw

Available Finish:
Pebble Tan: 5Px1-SE
Black: 5Px1B-SE

ALL DIMENSIONS IN INCHES

THE INFORMATION CONTAINED IN THIS DRAWING IS THE SOLE PROPERTY OF CROWN INDUSTRIAL. ANY REPRODUCTION IN PART OR AS A WHOLE WITHOUT THE WRITTEN PERMISSION OF CROWN INDUSTRIAL IS PROHIBITED.	ID #:	STOCK PART #:
	0002691	5x1-SE
DESCRIPTION:		
Sidewall Center Bracket w/ Soffit Clips		
FINISH:		# PCS. REV:



CROWN INDUSTRIAL
So. San Francisco, Ca
(650) 952-5150
www.crown-industrial.com