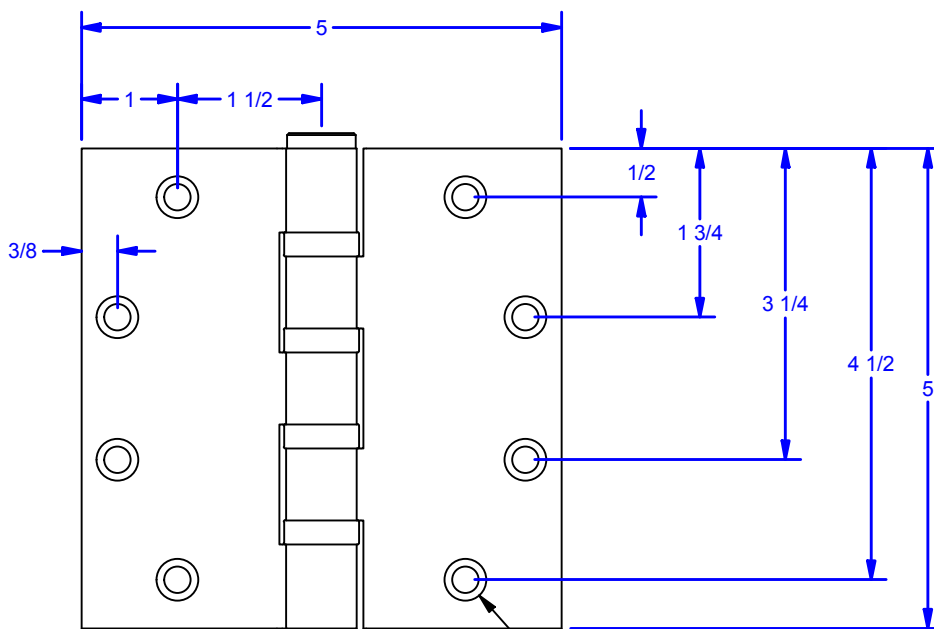
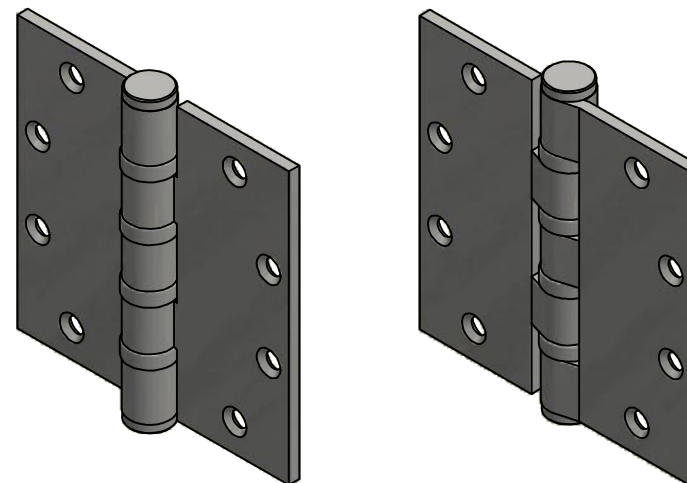
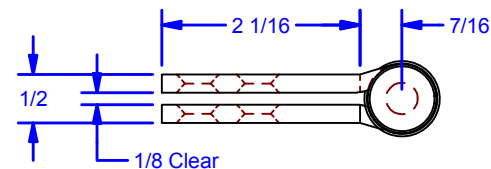


Open Position



8X Countersunk Holes (on Both Sides)
for #12 Flat Head Fasteners



Closed Position

Fasteners Included:
#12 x 1-1/4" Flat Head Phillips Sheet Metal Screw (Wood Door)
#12-24 x 1/2" Undercut Flat Head Phillips Type-F Screw (Metal Door)

Commercial Grade, 5-Knuckle, 4-Ball Bearing,
Removable Pin, Square Corner Hinge

ALL DIMENSIONS IN INCHES

THE INFORMATION CONTAINED IN THIS DRAWING IS THE SOLE PROPERTY OF CROWN INDUSTRIAL. ANY REPRODUCTION IN PART OR AS A WHOLE WITHOUT THE WRITTEN PERMISSION OF CROWN INDUSTRIAL IS PROHIBITED.	ID #:	STOCK PART #:
	0002907	5x5BH
DESCRIPTION:		MATERIAL:
5" x 5" Full Mortise Butt Hinge, Ball Bearing		
FINISH:	# PCS:	REV:



CROWN INDUSTRIAL
So. San Francisco, Ca
(650) 952-5150
www.crown-industrial.com