

4

3

2

1

D

D

C

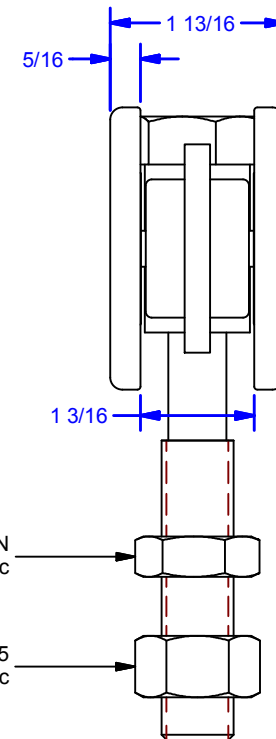
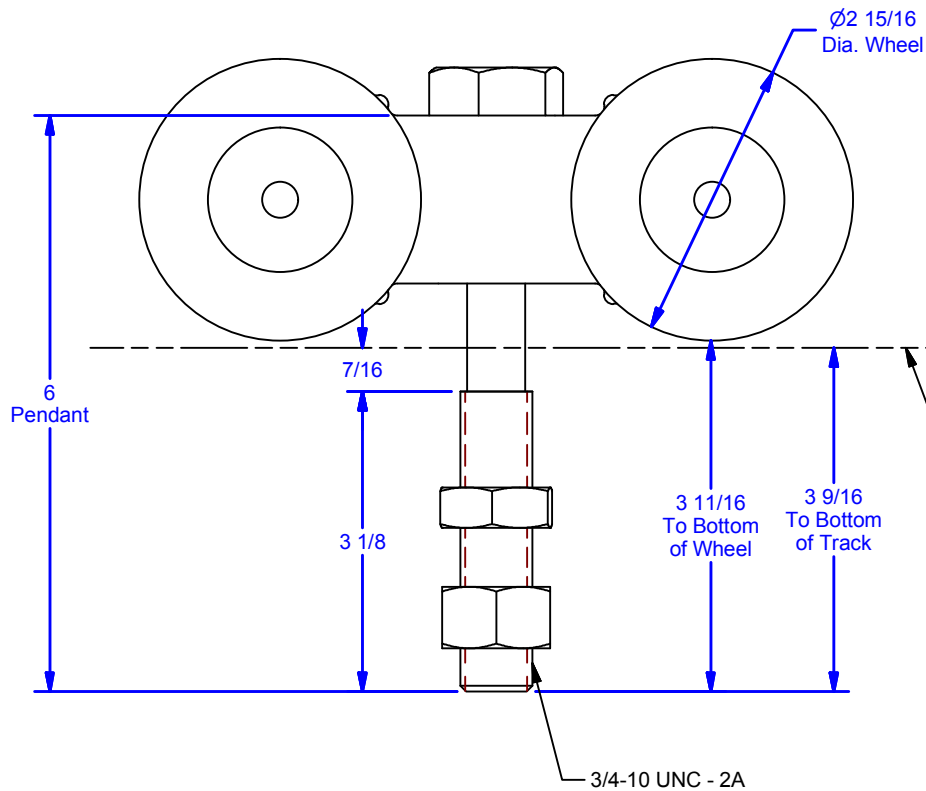
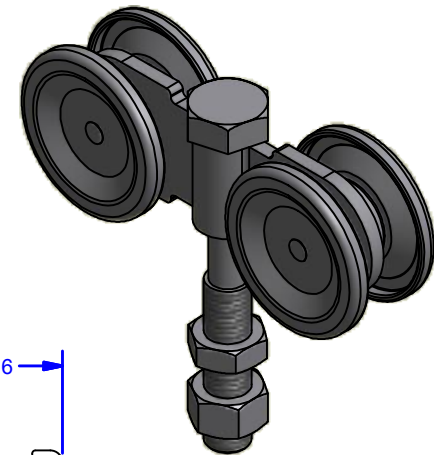
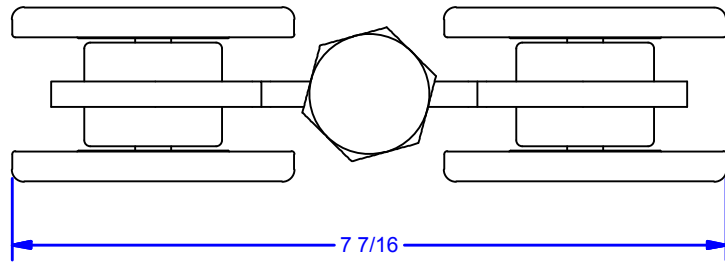
C

B

B

A

A



Bottom of Track
(14 Ga. Steel)

3/4 - 10 UNC JN
Jam Hex Nut - Grade 5, Zinc

HN 3/4 - 10 Zinc-5
Hex Nut - Grade 5, Zinc

DWG #: 6-1
 DRAWN: BCM 3/22/2007
 SHEET #1
 File: 0000851.idw

ALL DIMENSIONS IN INCHES

THE INFORMATION CONTAINED IN THIS DRAWING IS THE SOLE PROPERTY OF CROWN INDUSTRIAL. ANY REPRODUCTION IN PART OR AS A WHOLE WITHOUT THE WRITTEN PERMISSION OF CROWN INDUSTRIAL IS PROHIBITED.

PART #: 0000851

STOCK #: 6-1R

MATERIAL:

DESCRIPTION:

Roller Bearing Truck

FINISH: US2C Zinc

PCS: REV:



CROWN INDUSTRIAL

So. San Francisco, Ca
 (650) 952-5150

www.crown-industrial.com

4

3

2

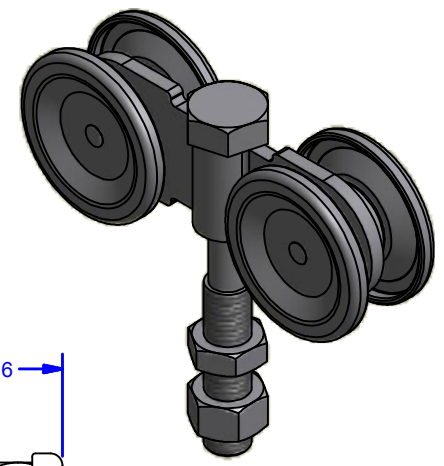
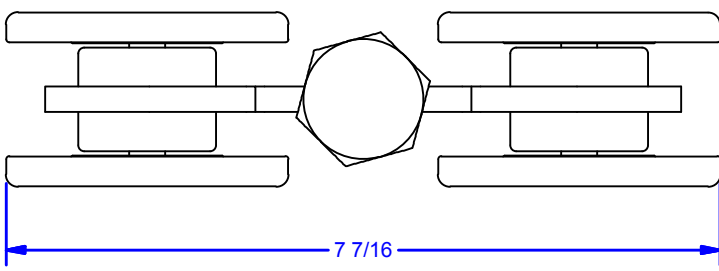
1



4 3 2 1

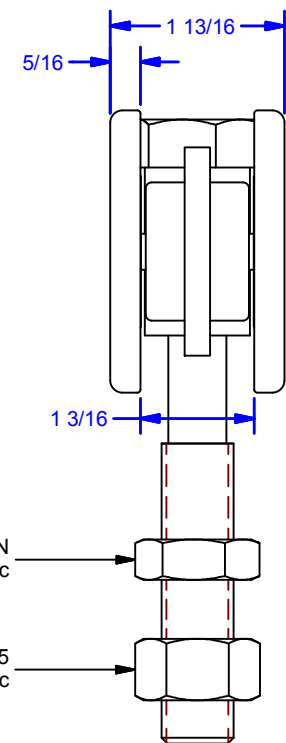
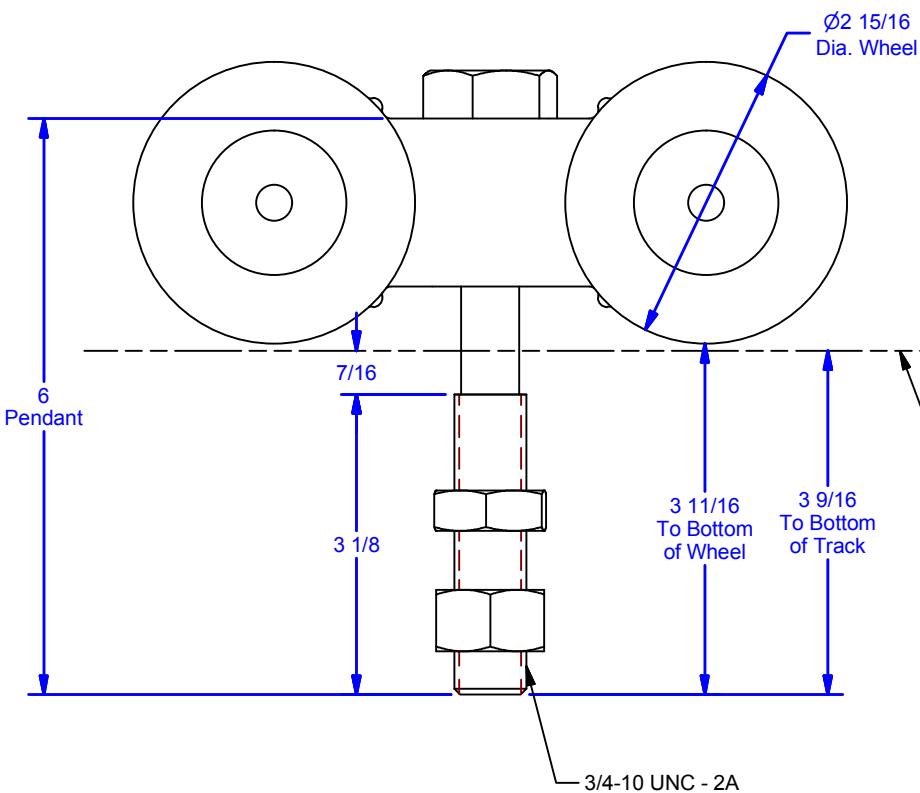
D

D



C

C



Bottom of Track
(14 Ga. Steel)

3/4 - 10 UNC JN
Jam Hex Nut - Grade 5, Zinc

HN 3/4 - 10 Zinc-5
Hex Nut - Grade 5, Zinc

3/4-10 UNC - 2A

ALL DIMENSIONS IN INCHES

THE INFORMATION CONTAINED IN THIS DRAWING IS THE SOLE PROPERTY OF CROWN INDUSTRIAL. ANY REPRODUCTION IN PART OR AS A WHOLE WITHOUT THE WRITTEN PERMISSION OF CROWN INDUSTRIAL IS PROHIBITED.

PART #: 0001990

STOCK #: 6-1B

MATERIAL:

DESCRIPTION:
Ball Bearing Truck

FINISH:
US2C Zinc

PCS: REV:

DWG #: 6-1
DRAWN:BCM 5/5/2015
SHEET #2
File: 0000851.idw



CROWN INDUSTRIAL
So. San Francisco, Ca
(650) 952-5150
www.crown-industrial.com

4 3 2 1

A

A