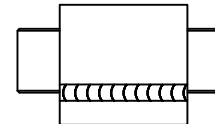
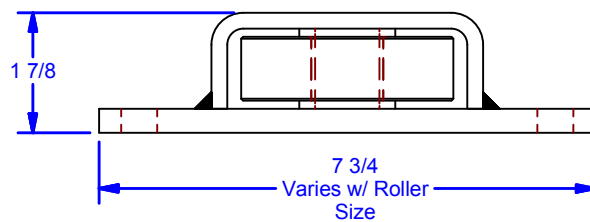
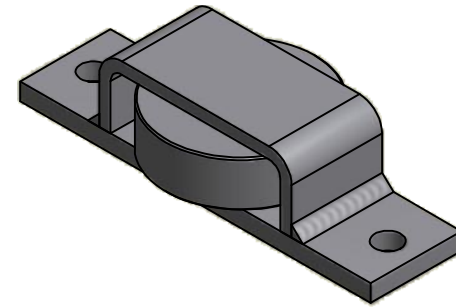
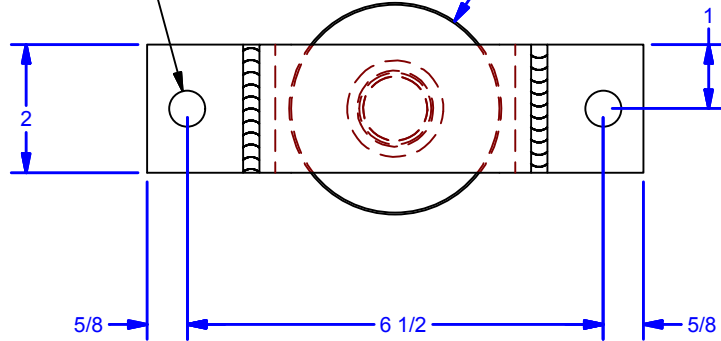


2X Ø9/16 THRU  
For 1/2 Hex Head Bolt

Ø3 5/16 Roller



# ALL DIMENSIONS IN INCHES

THE INFORMATION CONTAINED IN THIS DRAWING IS THE SOLE PROPERTY OF CROWN INDUSTRIAL. ANY REPRODUCTION IN PART OR AS A WHOLE WITHOUT THE WRITTEN PERMISSION OF CROWN INDUSTRIAL IS PROHIBITED.

PART #:  
0001770

STOCK #:  
61TG-3.3125

MATERIAL:  
Welded Steel Mild

DESCRIPTION:  
Single Wheel Top Guide, 3-5/16" Wheel

FINISH:  
Ptd. Black

# PCS:  
1

REV:

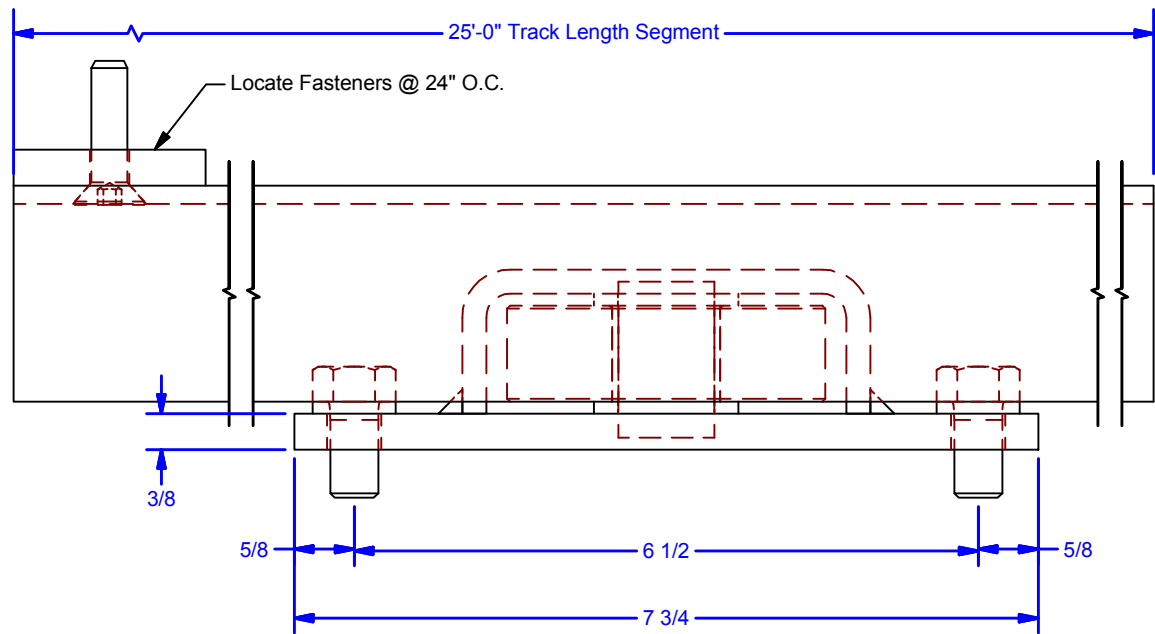
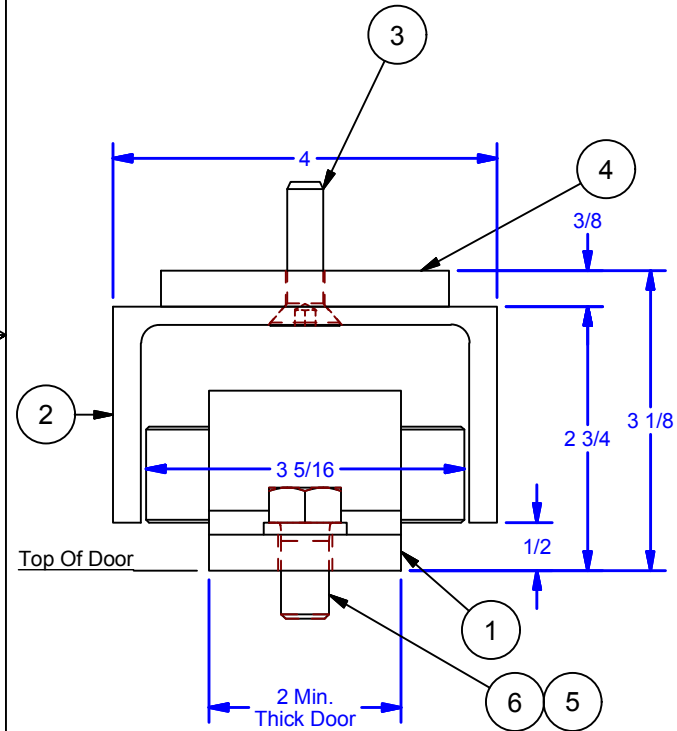


**CROWN  
INDUSTRIAL**

So. San Francisco, Ca  
(650) 952-5150  
[www.crown-industrial.com](http://www.crown-industrial.com)

DWG #: 61TG  
DRAWN:BCM 12/19/2014  
SHEET #2  
File: 0001082.idw

Parts List				
ITEM	QTY	PART #	DESCRIPTION	STOCK #
1	1	0001770	Single Wheel Top Guide, 3-5/16" Wheel	61TG-3.3125
2	1	0001769	Aluminum Concealed Roller Channel	61TG-3.3125-T
3	13	FHSCS 3/8-16 UNC x 1.5 BO	Flat Head Socket Cap Screw, Black Oxide	(By Others)
4	13	0001774	3/8" Shim (by others)	(By Others)
5	2	1/2 LW Zinc	Lock Washer, Zinc	(By Others)
6	2	HHMB 1/2-13 UNC - 1 Zinc -5	Hex Head Machine Bolt -Grade 5, Zinc	(By Others)



DWG #: 61TG  
 DRAWN:BCM 12/19/2014  
 SHEET #3  
 File: 0001082.idw

ALL DIMENSIONS IN INCHES			
THE INFORMATION CONTAINED IN THIS DRAWING IS THE SOLE PROPERTY OF CROWN INDUSTRIAL. ANY REPRODUCTION IN PART OR AS A WHOLE WITHOUT THE WRITTEN PERMISSION OF CROWN INDUSTRIAL IS PROHIBITED.	ID #:		STOCK PART #:
	0001772	61TG-3.3125	
	MATERIAL:		
DESCRIPTION:			
Single Wheel Top Guide, 3-5/16" Wheel Assembly			
FINISH:			# PCS. REV:
			1



**CROWN INDUSTRIAL**  
 So. San Francisco, Ca  
 (650) 952-5150  
[www.crown-industrial.com](http://www.crown-industrial.com)