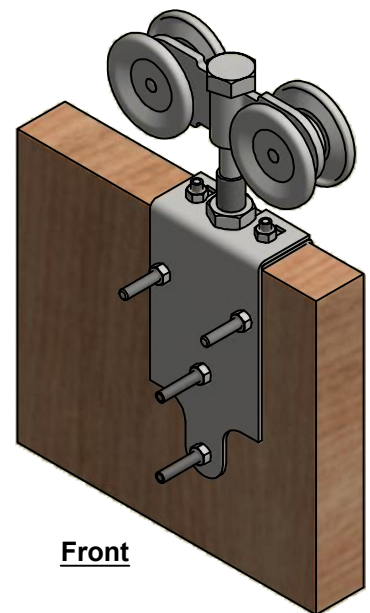
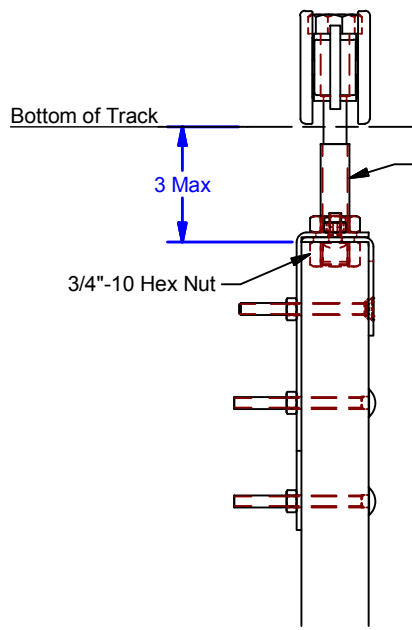


- 5/16"-18 x 3/4" Carriage Bolt, Grade 2, Zinc
- 3/4"-10 Hex Jam Nut, Zinc
w. 3/4"-10 Hex Nut, Zinc (Inset into door under apron)
- Flat Head Screw, Fully Threaded
- 5/16"-18 Carriage Bolt Fully Threaded - Grade 2, Zinc

Wall Side (Back)



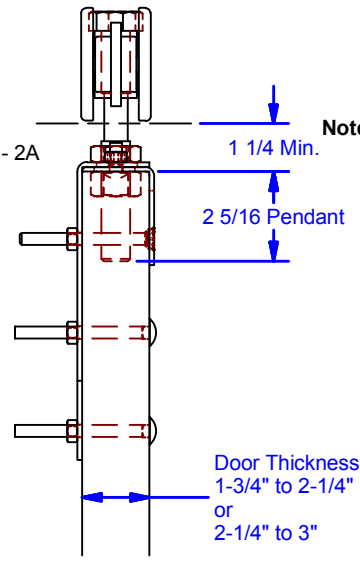
Front



3/4-10 UNC - 2A
Pendant

3/4"-10 Hex Nut

3 Max



1 1/4 Min.

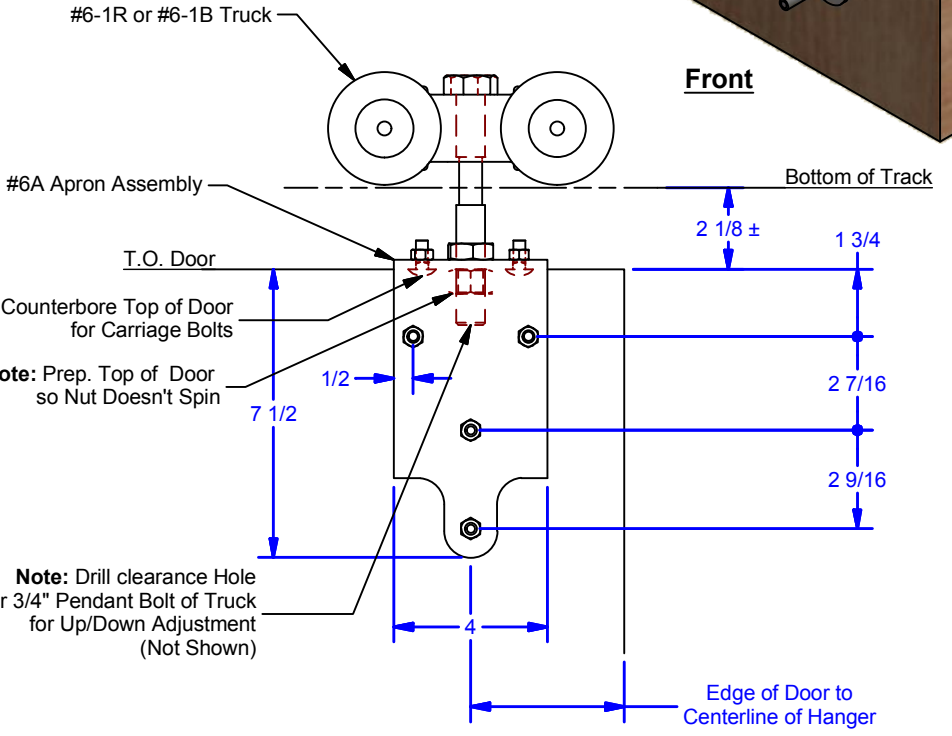
2 5/16 Pendant

Door Thickness:
1-3/4" to 2-1/4"
or
2-1/4" to 3"

Door Thickness:
1-3/4" to 2-1/4" OR 2-1/4" to 3"

Finish:
Powder Coat Pebble Tan
Powder Coat Black
Clear Zinc/Galvanized

Application:
Roller Bearing OR Ball Bearing



#6-1R or #6-1B Truck

#6A Apron Assembly

Bottom of Track

T.O. Door

Note: Counterbore Top of Door
for Carriage Bolts

Note: Prep. Top of Door
so Nut Doesn't Spin

Note: Drill clearance Hole
for 3/4" Pendant Bolt of Truck
for Up/Down Adjustment
(Not Shown)

2 1/8 ±

1 3/4

1/2

2 7/16

2 9/16

4

Edge of Door to
Centerline of Hanger

ALL DIMENSIONS IN INCHES

THE INFORMATION CONTAINED IN THIS
DRAWING IS THE SOLE PROPERTY OF
CROWN INDUSTRIAL. ANY REPRODUCTION
IN PART OR AS A WHOLE WITHOUT THE
WRITTEN PERMISSION OF CROWN
INDUSTRIAL IS PROHIBITED.

PART #:
0002626

STOCK #:
6H

MATERIAL:
Steel

DESCRIPTION:
Hanger Assembly

FINISH:

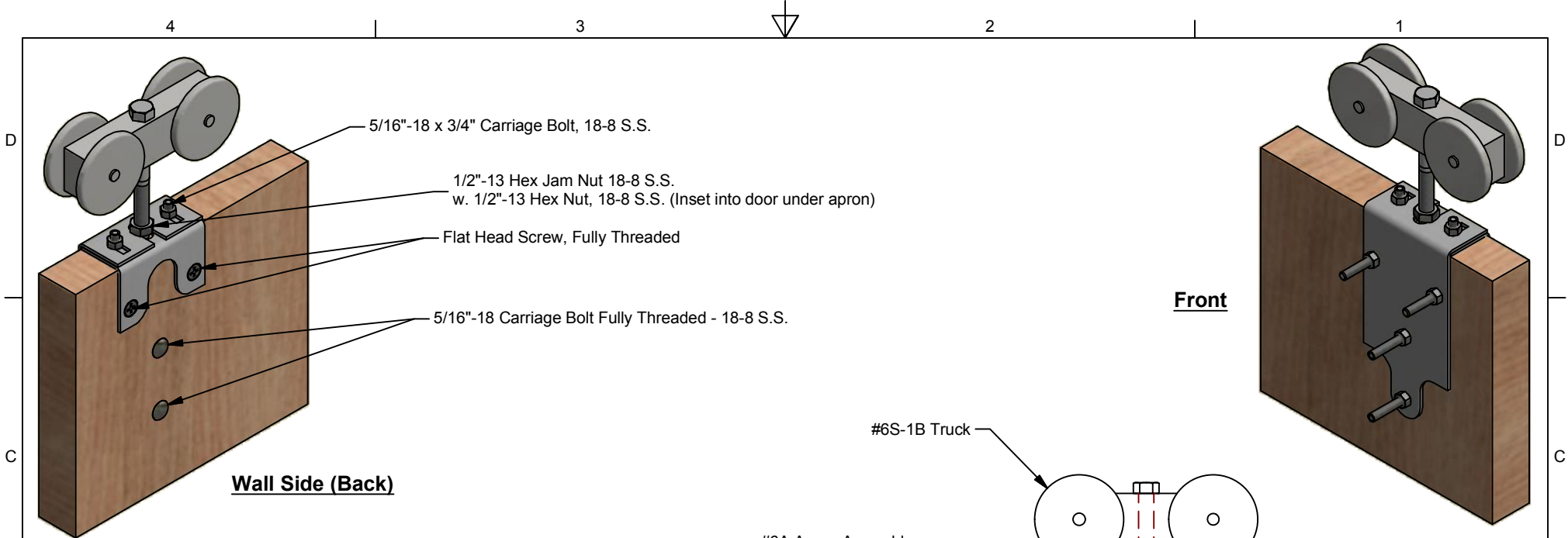
PCS. REV:



**CROWN
INDUSTRIAL**

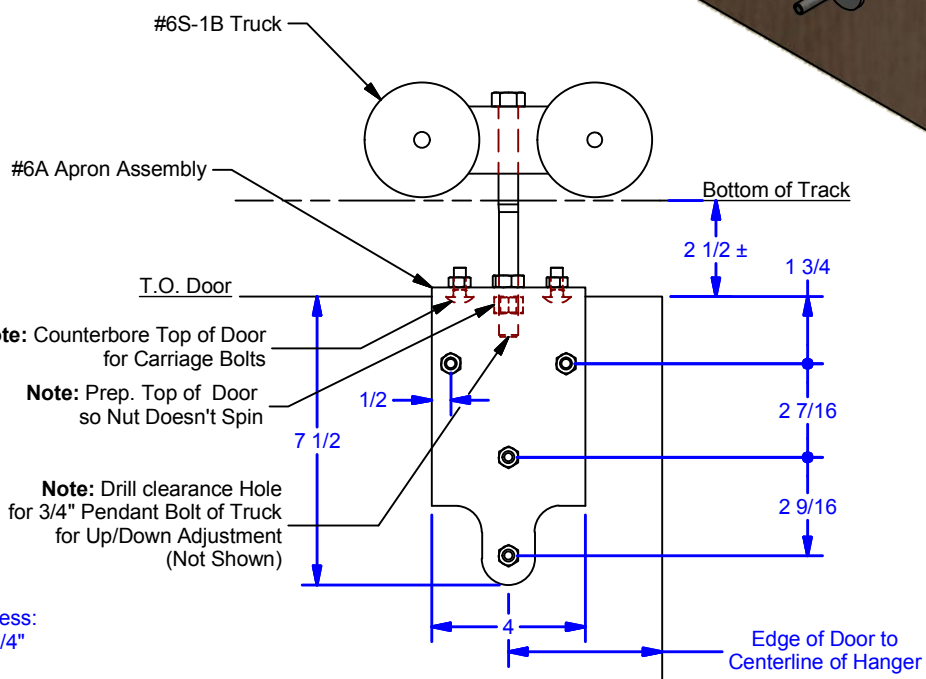
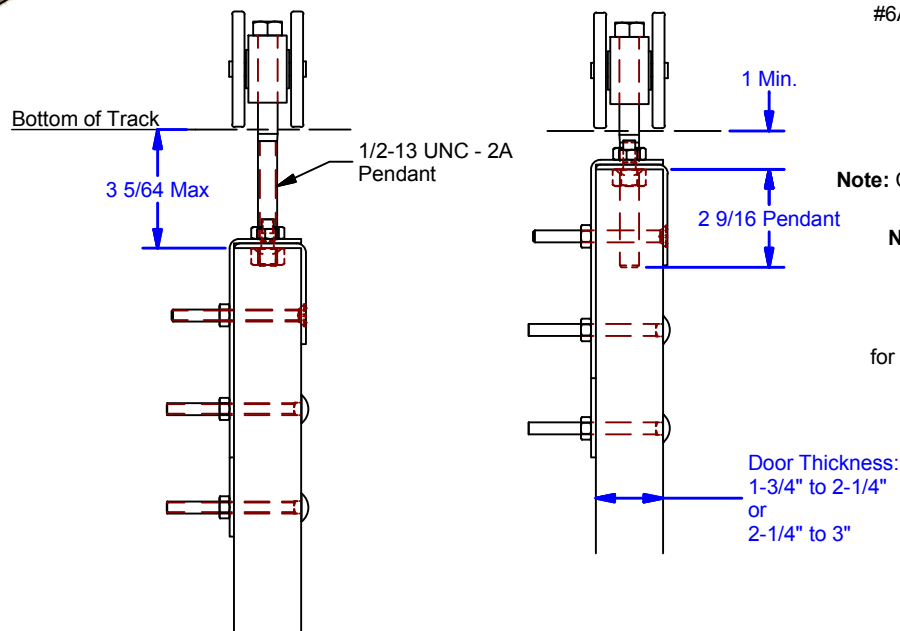
So. San Francisco, Ca
(650) 952-5150

www.crown-industrial.com



Wall Side (Back)

Front



ALL DIMENSIONS IN INCHES

THE INFORMATION CONTAINED IN THIS DRAWING IS THE SOLE PROPERTY OF CROWN INDUSTRIAL. ANY REPRODUCTION IN PART OR AS A WHOLE WITHOUT THE WRITTEN PERMISSION OF CROWN INDUSTRIAL IS PROHIBITED.	PART #:	STOCK #:
	0002624	6H - 6S2B / 6S4B
MATERIAL:		
304 Stainless Steel		
DESCRIPTION:		
Hanger Assembly		
FINISH:	# PCS:	REV:
#4		

#6S2B: 1-3/4" to 2-1/4" Thick Door
#6S4B: 2-1/4" to 3" Thick Door

DWG #: 0000038
 DRAWN: BCM 2/26/2018
 SHEET #2
 File: 0000038.idw



CROWN INDUSTRIAL
 So. San Francisco, Ca
 (650) 952-5150
 www.crown-industrial.com