

4

3

2

1

D

D

C

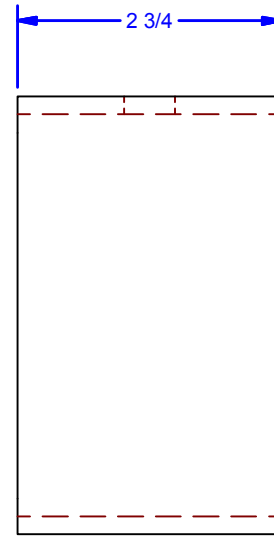
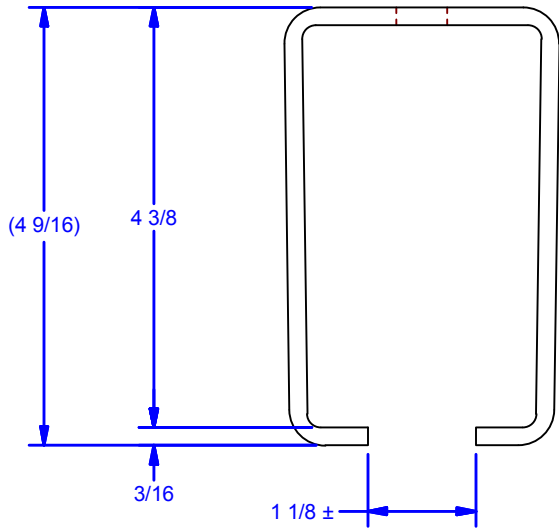
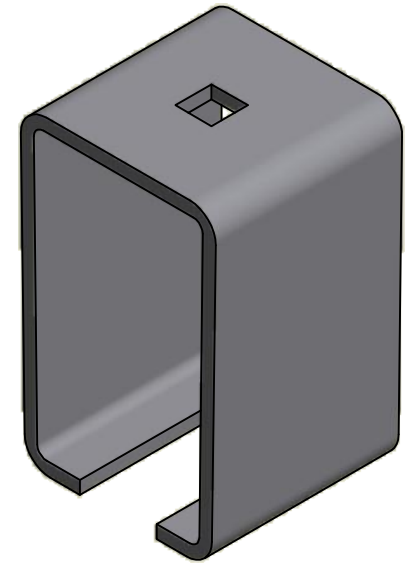
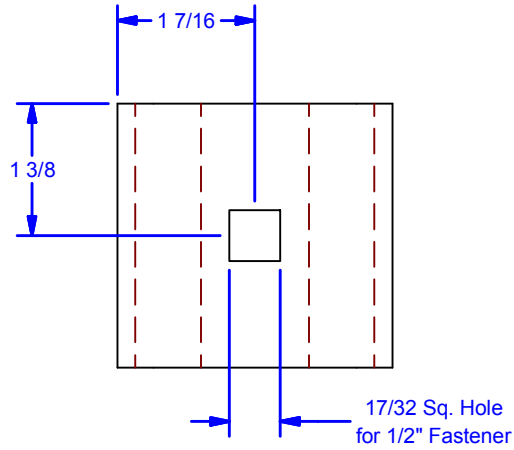
C

B

B

A

A



Note:
24" On Center Maximum Bracket Spacing

Avail. Finishes:
 6Px18B: Powder Coat Black
 6Px18: Powder Coat Pebble Tan
 6Gx18: Galvanized
 6Sx18: 304 Stainless Steel - #2B Mill Finish
 6Sx18-S: 304 Stainless Steel - #4 Brushed Finish

DWG #: 0002250
 DRAWN:BCM 3/30/2007
 SHEET #4
 File: 0002250.idw

ALL DIMENSIONS IN INCHES

THE INFORMATION CONTAINED IN THIS DRAWING IS THE SOLE PROPERTY OF CROWN INDUSTRIAL. ANY REPRODUCTION IN PART OR AS A WHOLE WITHOUT THE WRITTEN PERMISSION OF CROWN INDUSTRIAL IS PROHIBITED.	ID #:	0000287	STOCK PART #:	6x18
	MATERIAL:		Steel, Mild	
DESCRIPTION: Overhead Center Bracket				
FINISH:			# PCS:	REV:



CROWN INDUSTRIAL

So. San Francisco, Ca
 (650) 952-5150
 www.crown-industrial.com

4

3

2

1