

4

3

2

1

D

D

C

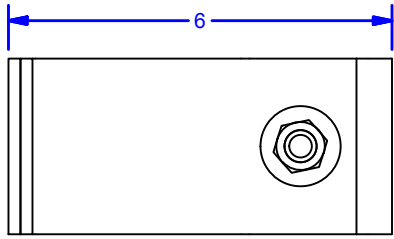
C

B

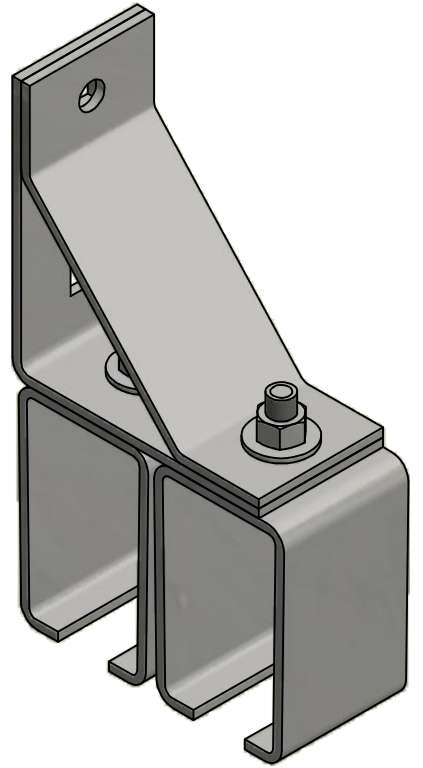
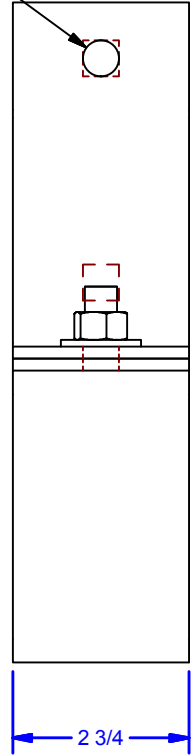
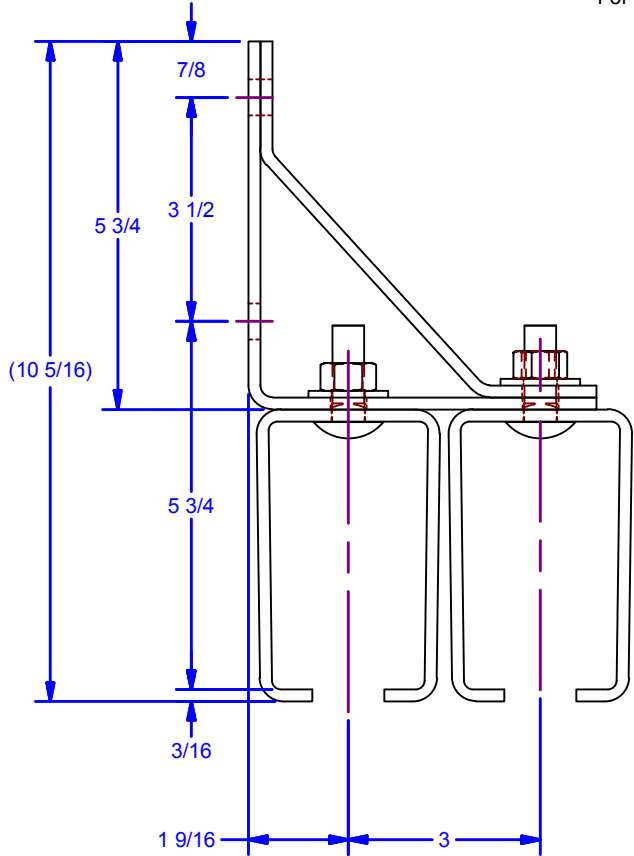
B

A

A



2X $\varnothing 9/16$ THRU
For 1/2 Fasteners (By Others)



Maximum Bracket Spacing
24" Centers up to 600 lb capacity

Avail. Finishes:
6Px22B: Powder Coat Black
6Px22: Powder Coat Pebble Tan
6Gx22: Galvanized
6Sx22: 304 Stainless Steel #2B Mill Finish

DWG #: 0000284
DRAWN:BCM 11/17/2008
SHEET #1
File: 0000284.idw

ALL DIMENSIONS IN INCHES

THE INFORMATION CONTAINED IN THIS DRAWING IS THE SOLE PROPERTY OF CROWN INDUSTRIAL. ANY REPRODUCTION IN PART OR AS A WHOLE WITHOUT THE WRITTEN PERMISSION OF CROWN INDUSTRIAL IS PROHIBITED.	ID #:	0000288	STOCK PART #:	6X22
	MATERIAL:			
DESCRIPTION: Double Center Bracket				
FINISH:		# PCS:		REV:



CROWN INDUSTRIAL
So. San Francisco, Ca
(650) 952-5150
www.crown-industrial.com

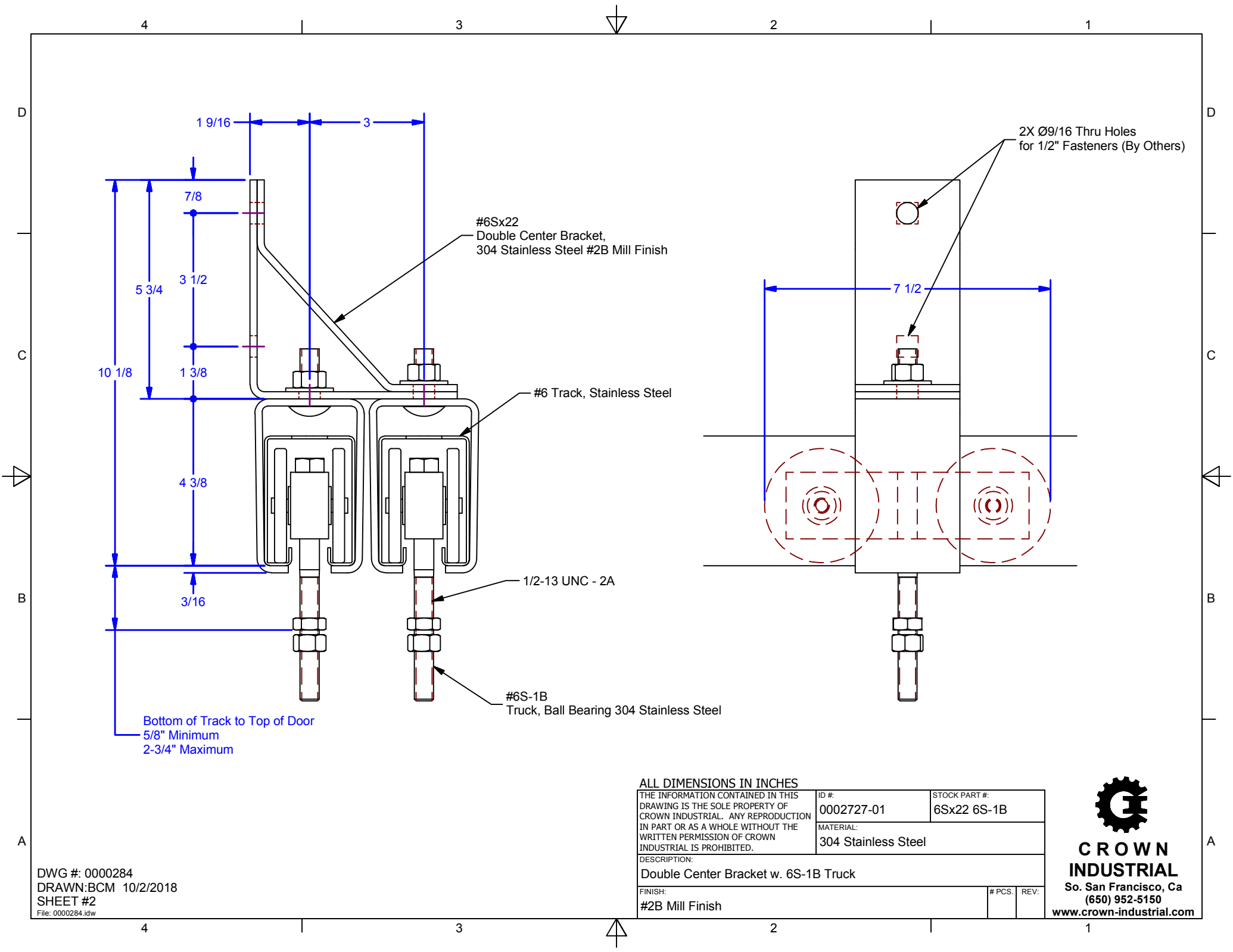
4

3

2

1





D
C
B
A

D
C
B
A

4

3

2

1

4

3

2

1

DWG #: 0000284
 DRAWN:BCM 10/2/2018
 SHEET #2
 File: 0000284.idw

ALL DIMENSIONS IN INCHES

THE INFORMATION CONTAINED IN THIS DRAWING IS THE SOLE PROPERTY OF CROWN INDUSTRIAL. ANY REPRODUCTION IN PART OR AS A WHOLE WITHOUT THE WRITTEN PERMISSION OF CROWN INDUSTRIAL IS PROHIBITED.	ID #:	0002727-01	STOCK PART #:	6Sx22 6S-1B
	MATERIAL:		304 Stainless Steel	
DESCRIPTION: Double Center Bracket w. 6S-1B Truck				
FINISH: #2B Mill Finish			# PCS:	REV:



CROWN INDUSTRIAL
 So. San Francisco, Ca
 (650) 952-5150
 www.crown-industrial.com