

**Section View: CRP375 Guide Option**

**Section View: 736-BTG Bottom T Guide Option**

**ALL DIMENSIONS IN INCHES**

THE INFORMATION CONTAINED IN THIS DRAWING IS THE SOLE PROPERTY OF CROWN INDUSTRIAL. ANY REPRODUCTION IN PART OR AS A WHOLE WITHOUT THE WRITTEN PERMISSION OF CROWN INDUSTRIAL IS PROHIBITED.	ID #:	STOCK PART #:
	0002900	736
DESCRIPTION:	MATERIAL:	
Continuous Floor Track	Steel, Mild, Welded	
FINISH:	# PCS:	REV:
Hot Dipped Galvanized		



**CROWN INDUSTRIAL**  
 So. San Francisco, Ca  
 (650) 952-5150  
 www.crown-industrial.com

4

3

2

1

D

D

C

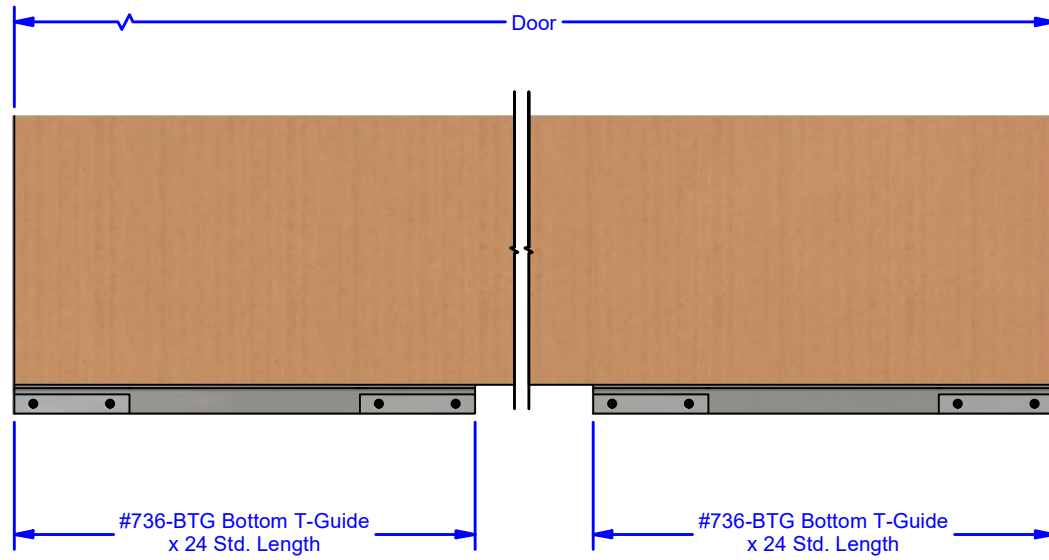
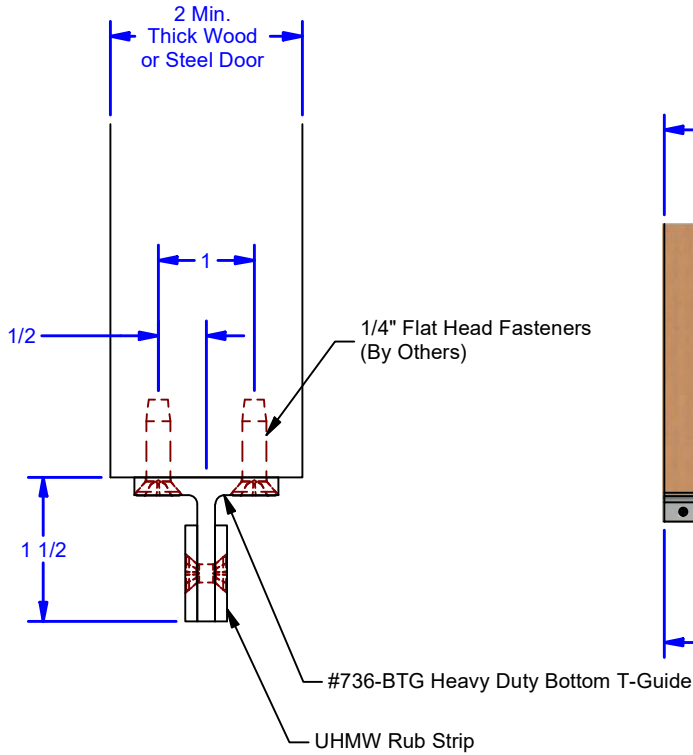
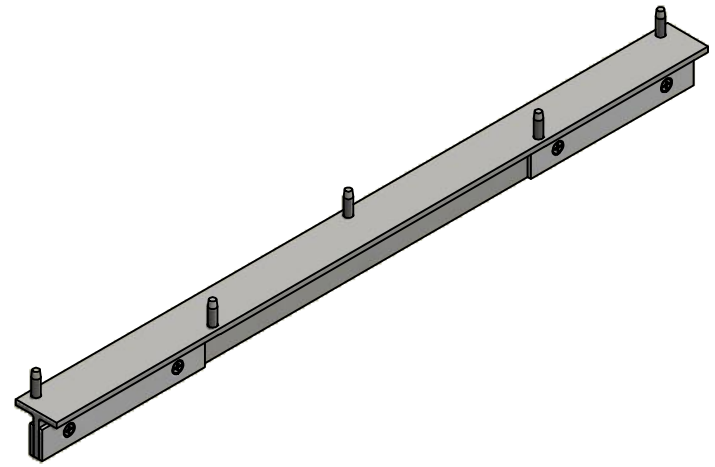
C

B

B

A

A



ALL DIMENSIONS IN INCHES

THE INFORMATION CONTAINED IN THIS DRAWING IS THE SOLE PROPERTY OF CROWN INDUSTRIAL. ANY REPRODUCTION IN PART OR AS A WHOLE WITHOUT THE WRITTEN PERMISSION OF CROWN INDUSTRIAL IS PROHIBITED.	ID #:	0002903	STOCK PART #:	736-BTG
	MATERIAL:			
DESCRIPTION: Bottom Guide				
FINISH:	HDG	# PCS:	2	REV:



**CROWN INDUSTRIAL**  
 So. San Francisco, Ca  
 (650) 952-5150  
 www.crown-industrial.com

DWG #: 0002897  
 DRAWN:BCM 4/5/2017  
 SHEET #2  
 File: 0002897.idw

4

3

2

1

