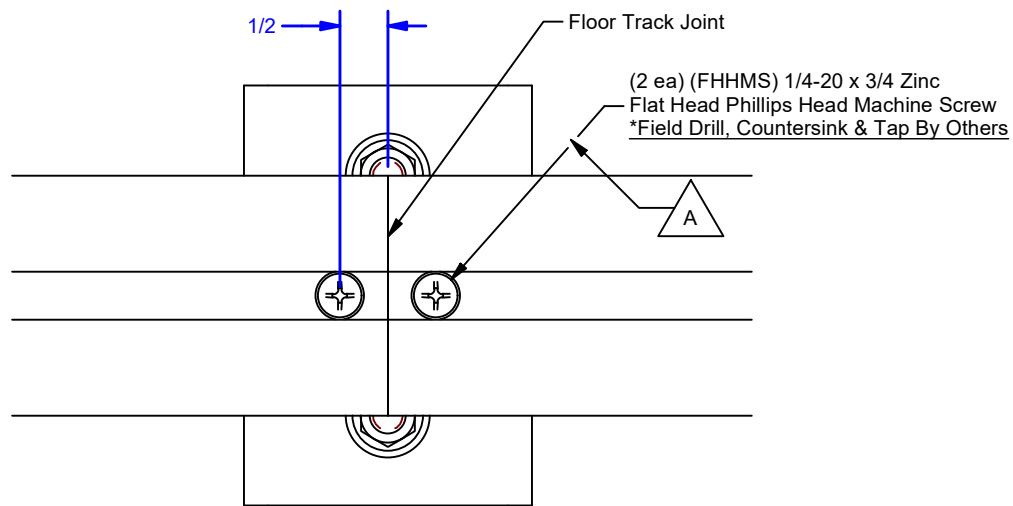
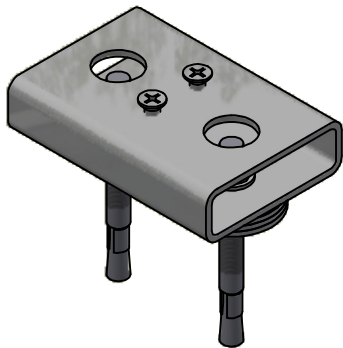
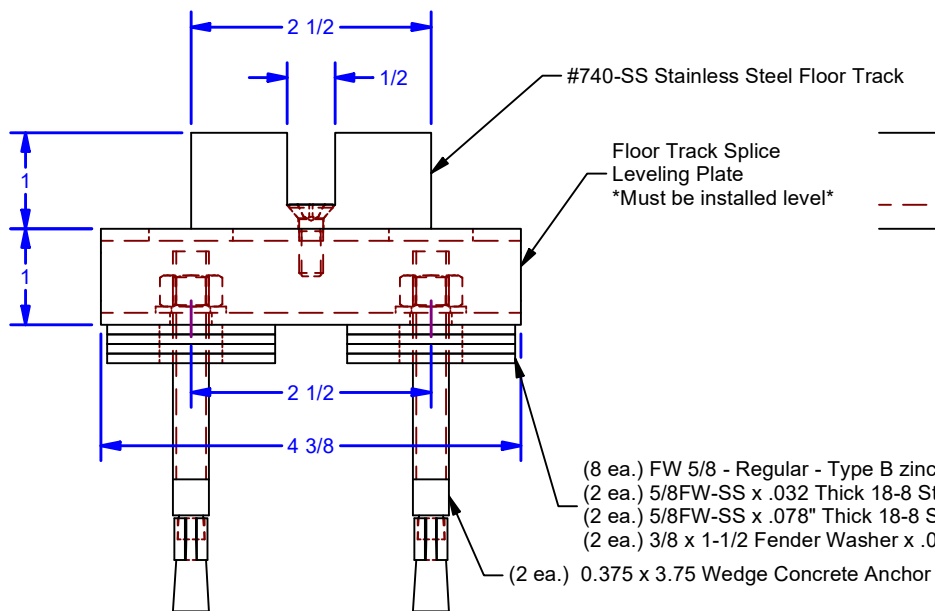


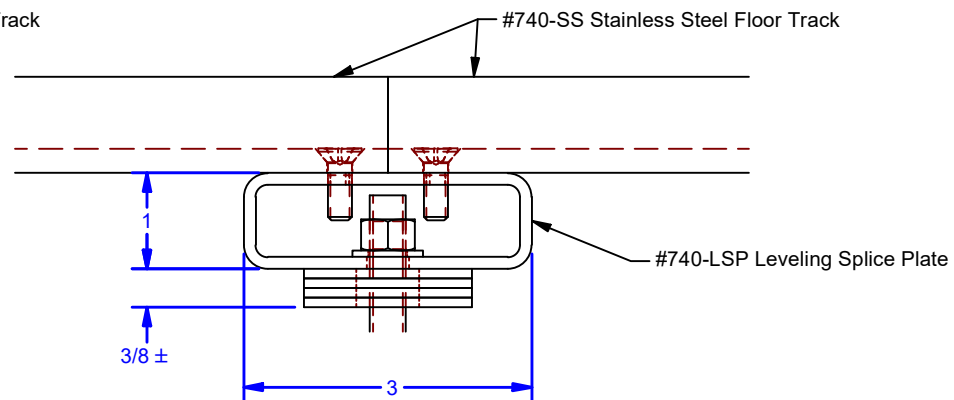
REVISIONS				
ZONE	REV	DESCRIPTION	DATE	BY
	A	Attachment Screws	12-16-21	BCM



Plan View



Sectional End View



- (8 ea.) FW 5/8 - Regular - Type B zinc Flat Washer-zinc Leveling Shims
- (2 ea.) 5/8FW-SS x .032 Thick 18-8 Stainless Steel Leveling Shims
- (2 ea.) 5/8FW-SS x .078" Thick 18-8 Stainless Steel Leveling Shims
- (2 ea.) 3/8 x 1-1/2 Fender Washer x .047 Thick, Zinc Shims
- (2 ea.) 0.375 x 3.75 Wedge Concrete Anchor

ALL DIMENSIONS IN INCHES

THE INFORMATION CONTAINED IN THIS DRAWING IS THE SOLE PROPERTY OF CROWN INDUSTRIAL. ANY REPRODUCTION IN PART OR AS A WHOLE WITHOUT THE WRITTEN PERMISSION OF CROWN INDUSTRIAL IS PROHIBITED.	ID #:	STOCK PART #:
	0002177	740-LSP
DESCRIPTION:		
Leveling Splice Plate Assembly		
FINISH:	# PCS:	REV:
Prime Ptd.		A



CROWN INDUSTRIAL
 So. San Francisco, Ca
 (650) 952-5150
 www.crown-industrial.com