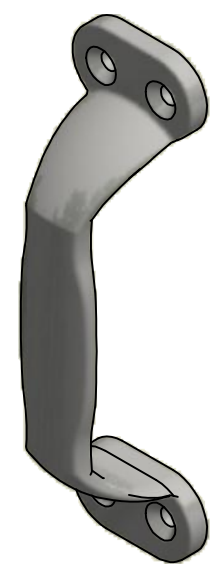
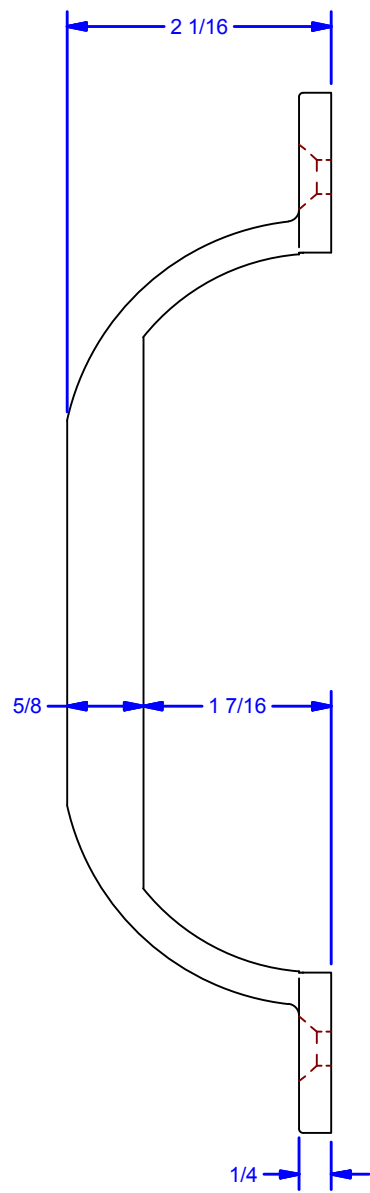


4X Drilled & Countersunk For
1/4 Flat Head Machine Screw (82)

Available Finishes:
 0081.00002: Powder Coat Pebble Tan
 0081.00002SC: Powder Coat Black
 0081.00002ZC: Clear Zinc Plated



ALL DIMENSIONS IN INCHES

| | | | | |
|--|-----------|---------|---------------|------------|
| THE INFORMATION CONTAINED IN THIS DRAWING IS THE SOLE PROPERTY OF CROWN INDUSTRIAL. ANY REPRODUCTION IN PART OR AS A WHOLE WITHOUT THE WRITTEN PERMISSION OF CROWN INDUSTRIAL IS PROHIBITED. | ID #: | 0001597 | STOCK PART #: | 0081.00002 |
| | MATERIAL: | | Gray Iron | |
| DESCRIPTION: | | | | |
| 81P2 Bow Handle | | | | |
| FINISH: | | | # PCS: | REV: |



CROWN INDUSTRIAL
 So. San Francisco, Ca
 (650) 952-5150
www.crown-industrial.com