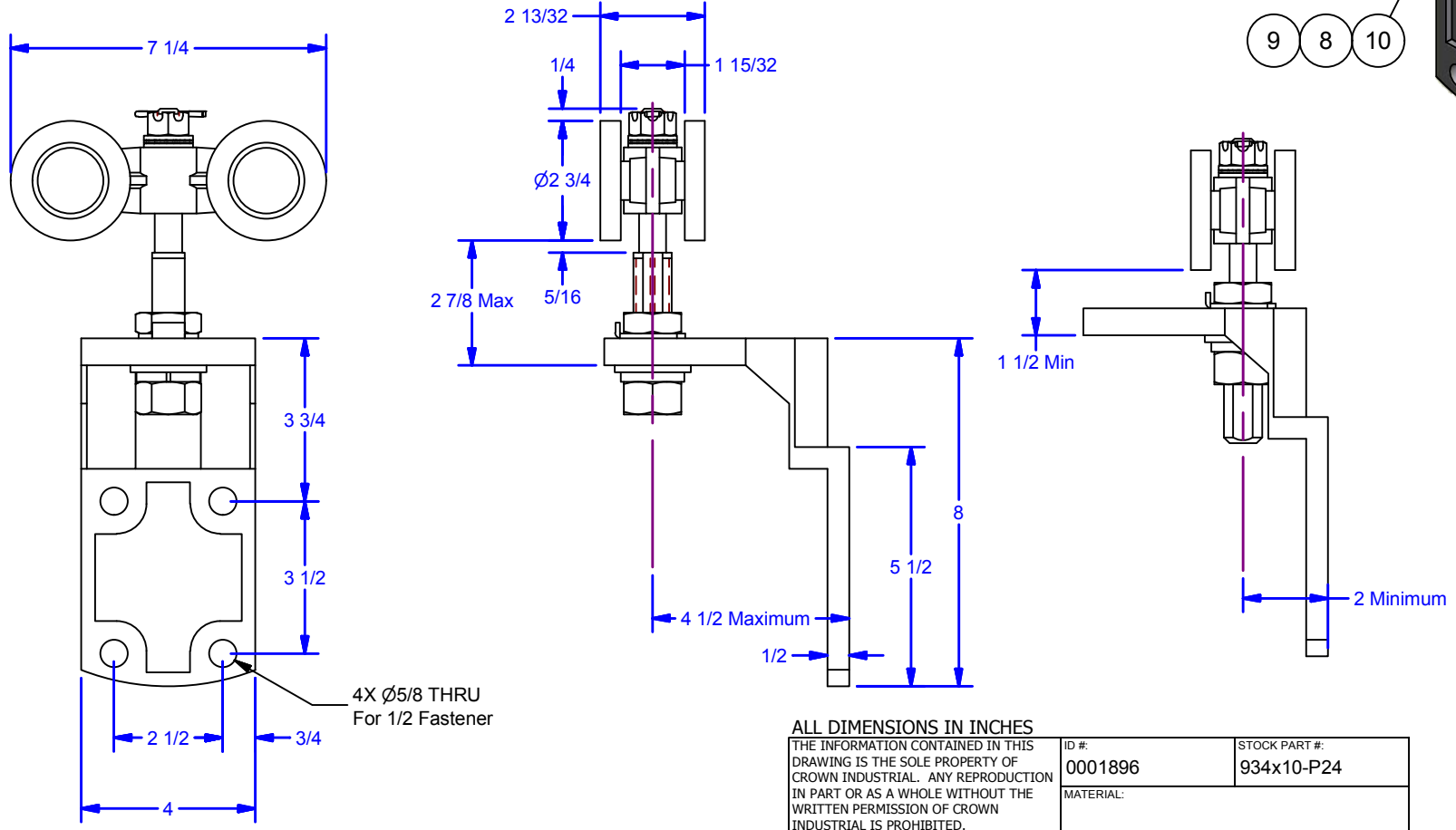
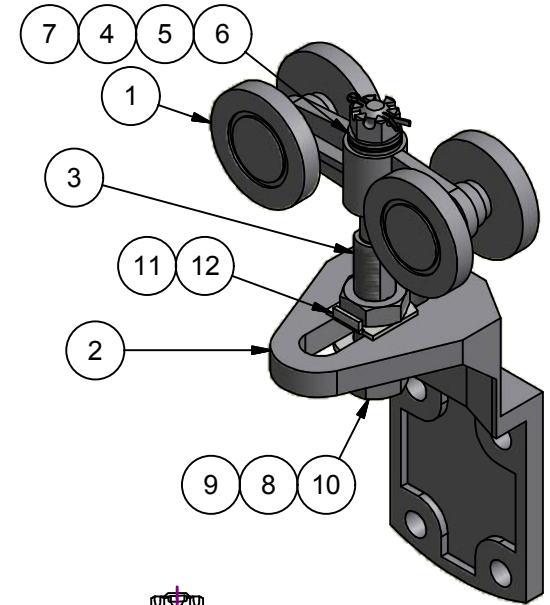


| Parts List | | | |
|------------|-----|--|--|
| ITEM | QTY | ID # | DESCRIPTION |
| 1 | 1 | 0001070 | #10-1BE Truck Body |
| 2 | 1 | 0000552 | Slide-Fold Apron |
| 3 | 1 | 0000554 | 934 Slide-Fold 2434P24 Hanger, Pendant |
| 4 | 1 | SHN 5/8 - 11 | Slotted Hex Nut |
| 5 | 1 | 0000898 | Needle Roller Thrust Bearing, 5/8" Shaft |
| 6 | 2 | 0000897 | Thrust Washer, 5/8" Shaft x 3/32 Thick |
| 7 | 1 | 1/8 x 1 1/4 Extended Prong Square Cut Type | Cotter Pin, Extended Prong Sq. Cut |
| 8 | 1 | 0002123 | Separator Washer |
| 9 | 1 | 7/8 LW Zinc | Lock Washer, Zinc |
| 10 | 1 | HN 7/8 - 9 Zinc-5 | Hex Nut - Grade 5, Zinc |
| 11 | 1 | 7/8 - 9 UNC JN | Jam Hex Nut - Grade 5, Zinc |
| 12 | 1 | 0002130 | Lock Plate |



| | | |
|--|---|------------|
| ALL DIMENSIONS IN INCHES | | |
| THE INFORMATION CONTAINED IN THIS DRAWING IS THE SOLE PROPERTY OF CROWN INDUSTRIAL. ANY REPRODUCTION IN PART OR AS A WHOLE WITHOUT THE WRITTEN PERMISSION OF CROWN INDUSTRIAL IS PROHIBITED. | ID #: | 0001896 |
| | STOCK PART #: | 934x10-P24 |
| DESCRIPTION: | Slide-Fold Hanger (Door up to 500 lbs.) | |
| FINISH: | Powder Coat | # PCS: 1 |
| | | REV: 1 |

CROWN INDUSTRIAL
So. San Francisco, Ca
(650) 952-5150
www.crown-industrial.com

DWG #: 934x10
DRAWN:BCM 2/20/2015
SHEET #1
File: 0002122.idw