

# Available Box Track Sliding Door Hardware Finishes



**Powder Coat Pebble Tan**

Not Available for:

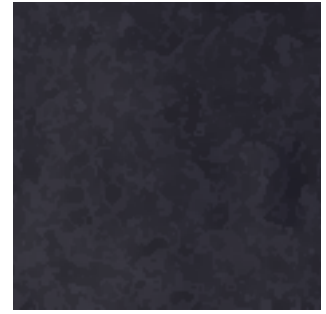
- #2 (200 lb. capacity)
- #4.4 (440 lb. capacity)



**Galvanized**

Not Available for:

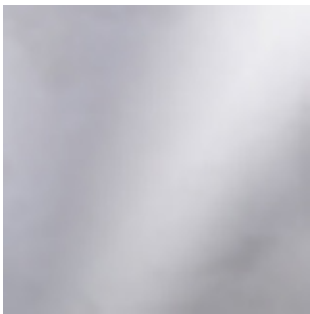
- #4.4 (440 lb. capacity)
- #8 (800 lb. capacity)



**Powder Coat Black**

Not Available for:

- #2 (200 lb. capacity)
- #4.4 (440 lb. capacity)



**304 Stainless Steel  
#2B Mill Finish**

Not Available for:

- #4.4 (440 lb. capacity)
- #8 (800 lb. capacity)
- #10 (1000 lb. capacity)
- #25 (2,500 lb. capacity)



**304 Stainless Steel  
#4 Brushed Finish**

Not Available for:

- #4.4 (440 lb. capacity)
- #8 (800 lb. capacity)
- #10 (1000 lb. capacity)
- #25 (2,500 lb. capacity)



**Anodized Aluminum  
US28/626**

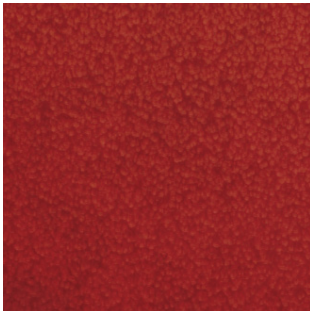
Not Available for:

- #4 (400 lb. capacity)
- #5 (500 lb. capacity)
- #6 (600 lb. capacity)
- #8 (800 lb. capacity)
- #10 (1000 lb. capacity)
- #25 (2,500 lb. capacity)

**Note:** Listed finishes above are our standard finishes. Custom finishes are available upon request.

Finishes may vary slightly in consistency and color from the samples as shown in this document. Physical samples are available upon request. Please email us at [sales@crow-industrial.com](mailto:sales@crow-industrial.com) and indicate which samples you require and the quantity along with your name, address, and phone number.

# Available Box Track Sliding Door Hardware Finishes



**Powder Coat  
Cranberry Red #10**

Not Available for:

- #2 (200 lb. capacity)
- #4.4 (440 lb. capacity)



**Powder Coat  
Blue Storm #30**

Not Available for:

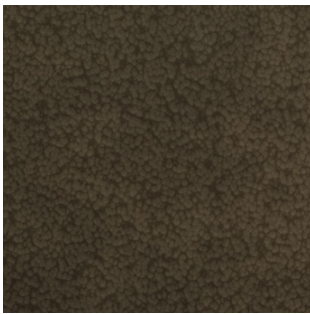
- #2 (200 lb. capacity)
- #4.4 (440 lb. capacity)



**Powder Coat  
Pure White #90**

Not Available for:

- #2 (200 lb. capacity)
- #4.4 (440 lb. capacity)



**Powder Coat  
Oil-Rubbed Bronze  
#456T**

Not Available for:

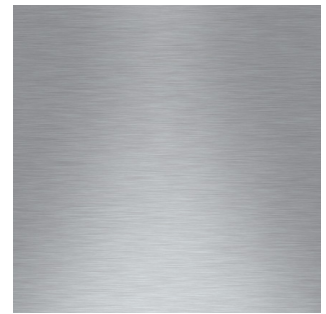
- #2 (200 lb. capacity)
- #4.4 (440 lb. capacity)



**Powder Clear Coat  
#275S**

Not Available for:

- #2 (200 lb. capacity)
- #4.4 (440 lb. capacity)



**Powder Coat  
Aluminum #120**

Not Available for:

- #2 (200 lb. capacity)
- #4.4 (440 lb. capacity)

**Note:** Listed finishes above are our standard finishes. Custom finishes are available upon request.

Finishes may vary slightly in consistency and color from the samples as shown in this document. Physical samples are available upon request. Please email us at [sales@crow-industrial.com](mailto:sales@crow-industrial.com) and indicate which samples you require and the quantity along with your name, address, and phone number.