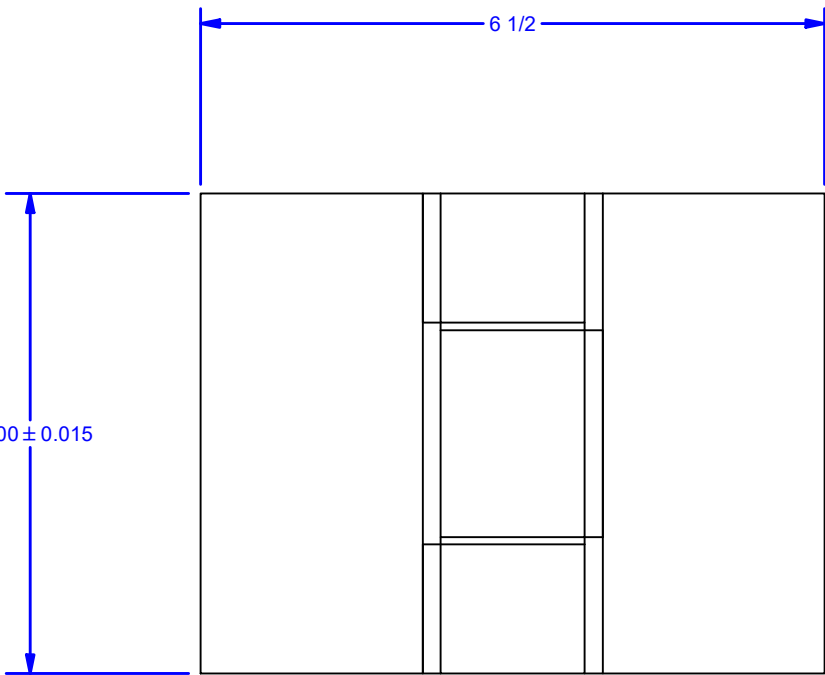
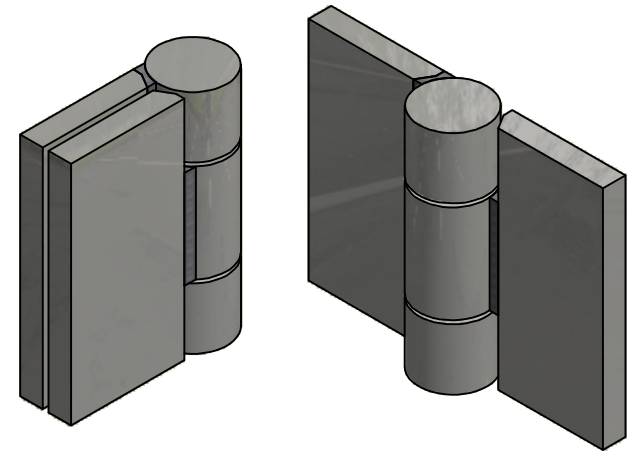
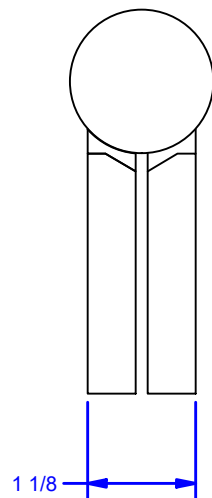
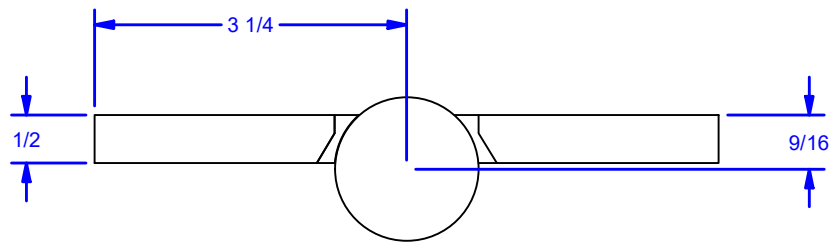


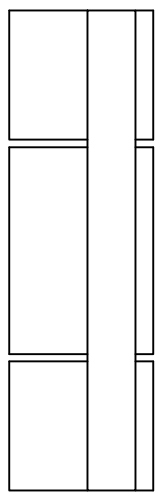
4 | 3 | 2 | 1

D
C
B
A

D
C
B
A



- Thrust Capacity: 800 lbs
- Radial Capacity: 320 lbs
- Torque to Operate Door: 50 lb-in
- For weld on applications: Minimum fillet weld size of 1/4" on (3) sides of each hinge leaf. Weld interpass temperature should not exceed 225 Degrees F



Optional Material: 304 Stainless Steel or 316 Stainless Steel

FINISHES:

- Standard: Prime Ptd.
- Optional:
 - 304 Stainless Steel - 2B Mill Finish
 - 316 Stainless Steel - 2B Mill Finish

DWG #: CBI8500
 DRAWN: BCM 9/1/2009
 SHEET #1
 File: 0000881.idw

ALL DIMENSIONS IN INCHES

THE INFORMATION CONTAINED IN THIS DRAWING IS THE SOLE PROPERTY OF CROWN INDUSTRIAL. ANY REPRODUCTION IN PART OR AS A WHOLE WITHOUT THE WRITTEN PERMISSION OF CROWN INDUSTRIAL IS PROHIBITED.	ID #: 0000667-03	STOCK PART #: CBI8508
	MATERIAL: Hot Roll Steel	
DESCRIPTION: Precision High Capacity Full Mortise Hinge, No Bolt Holes		
FINISH:	# PCS:	REV: A



CROWN INDUSTRIAL
 So. San Francisco, Ca
 (650) 952-5150
 www.crown-industrial.com

4 | 3 | 2 | 1

4

3

2

1

D

D

C

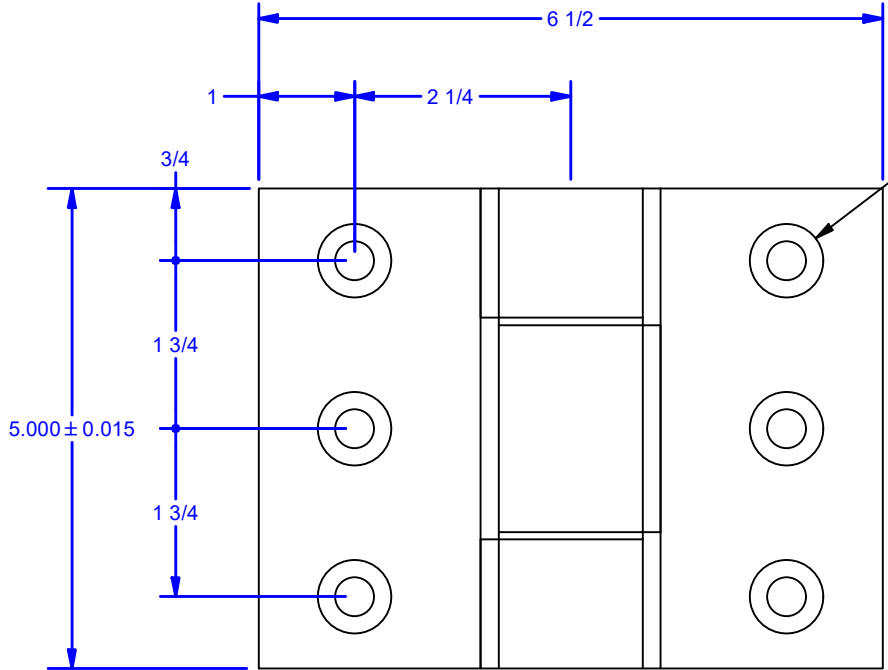
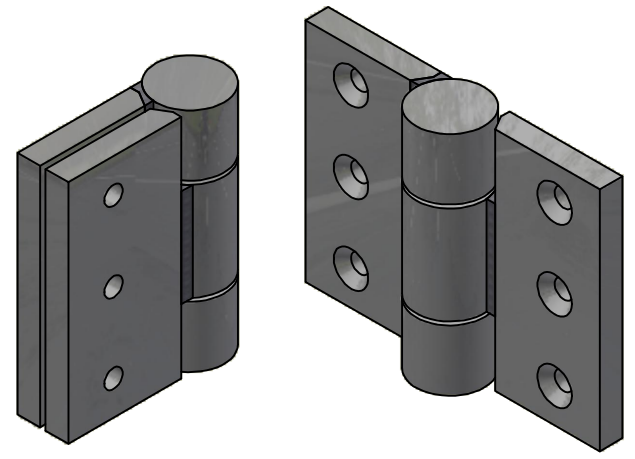
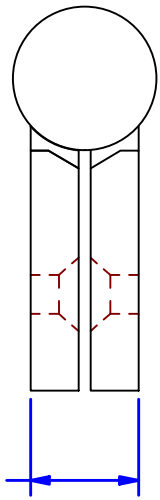
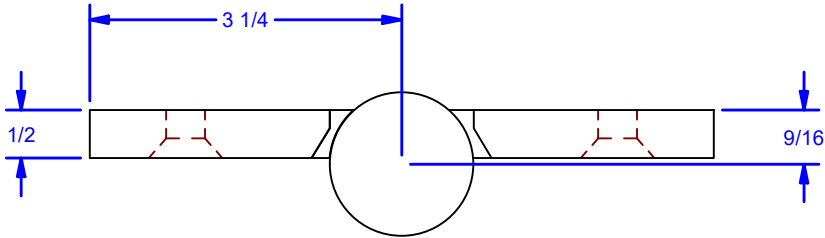
C

B

B

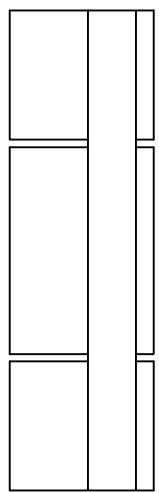
A

A



6X Ø13/32 THRU
Countersunk for 3/8 Flat Head Socket Machine Screws

- Thrust Capacity: 800 lbs
- Radial Capacity: 320 lbs
- Torque to Operate Door: 50 lb-in
- Minimum thread engagement into reinforcing member shall be equal to bolt diameter.



Optional Material: 304 Stainless Steel or 316 Stainless Steel

FINISHES:

Standard: Prime Ptd.

Optional:

- 304 Stainless Steel - 2B Mill Finish
- 316 Stainless Steel - 2B Mill Finish

DWG #: CBI8500
DRAWN:BCM 9/1/2009
SHEET #2
File: 0000881.idw

ALL DIMENSIONS IN INCHES

THE INFORMATION CONTAINED IN THIS DRAWING IS THE SOLE PROPERTY OF CROWN INDUSTRIAL. ANY REPRODUCTION IN PART OR AS A WHOLE WITHOUT THE WRITTEN PERMISSION OF CROWN INDUSTRIAL IS PROHIBITED.	ID #:	0000667-01	STOCK PART #:	CBI8508x1C
	MATERIAL:	Hot Roll Steel		
DESCRIPTION: Precision High Capacity Full Mortise Hinge, 3/8 Flat Head Bolt Holes				
FINISH:	# PCS:	REV:	A	



CROWN INDUSTRIAL
So. San Francisco, Ca
(650) 952-5150
www.crown-industrial.com

4

3

2

1



4

3

2

1

D

D

C

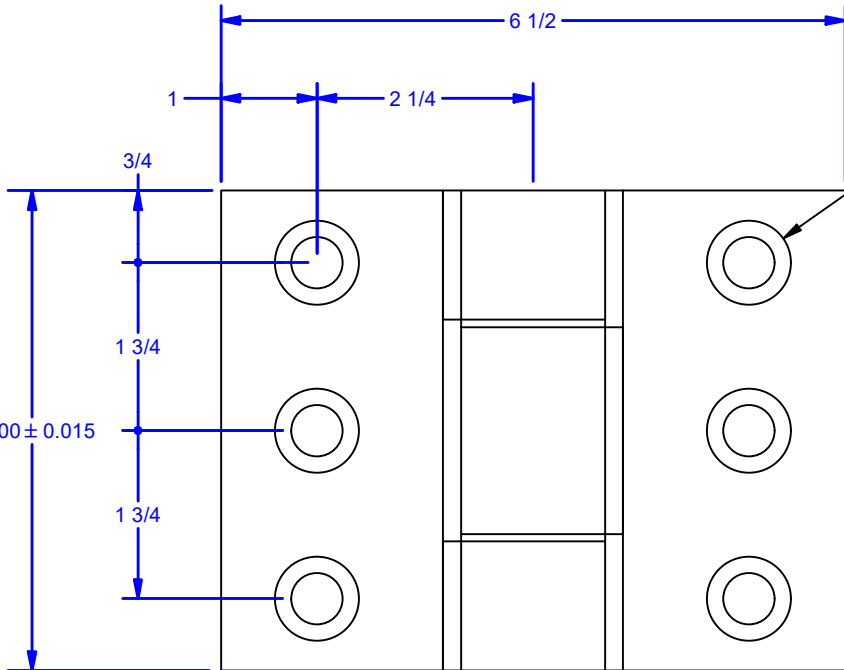
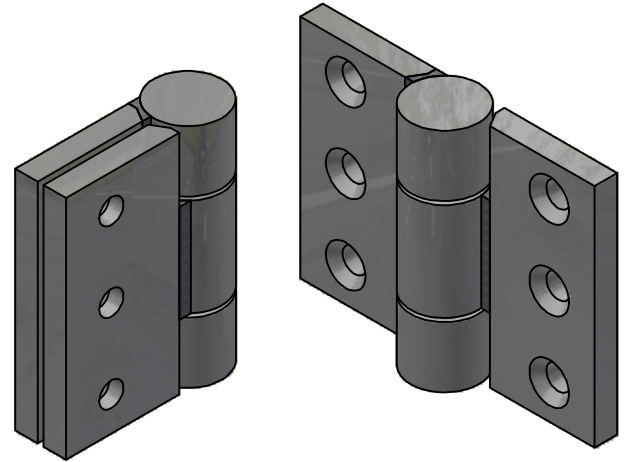
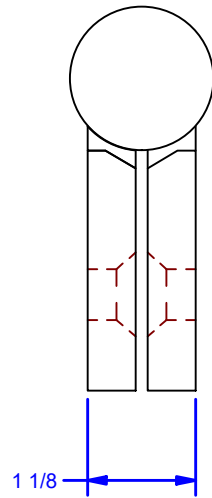
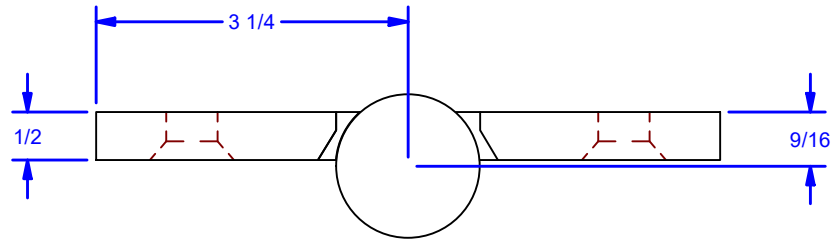
C

B

B

A

A



6X Ø17/32 THRU
Countersunk for 1/2 Flat Head Socket Machine Screws

- Thrust Capacity: 800 lbs
- Radial Capacity: 320 lbs
- Torque to Operate Door: 50 lb-in
- Minimum thread engagement into reinforcing member shall be equal to bolt diameter.

Optional Material: 304 Stainless Steel or 316 Stainless Steel

FINISHES:

Standard: Prime Ptd.

Optional:

- 304 Stainless Steel - 2B Mill Finish
- 316 Stainless Steel - 2B Mill Finish

DWG #: CBI8500
DRAWN:BCM 9/1/2009
SHEET #3

File: 0000881.idw

ALL DIMENSIONS IN INCHES

THE INFORMATION CONTAINED IN THIS DRAWING IS THE SOLE PROPERTY OF CROWN INDUSTRIAL. ANY REPRODUCTION IN PART OR AS A WHOLE WITHOUT THE WRITTEN PERMISSION OF CROWN INDUSTRIAL IS PROHIBITED.	ID #:	0000667	STOCK PART #:	CBI-8508x2C
	MATERIAL:	Hot Roll Steel		
DESCRIPTION: Precision High Capacity Full Mortise Hinge, 1/2 Flat Head Bolt Holes				
FINISH:	# PCS:	REV:	A	



CROWN INDUSTRIAL

So. San Francisco, Ca
(650) 952-5150

www.crown-industrial.com

4

3

2

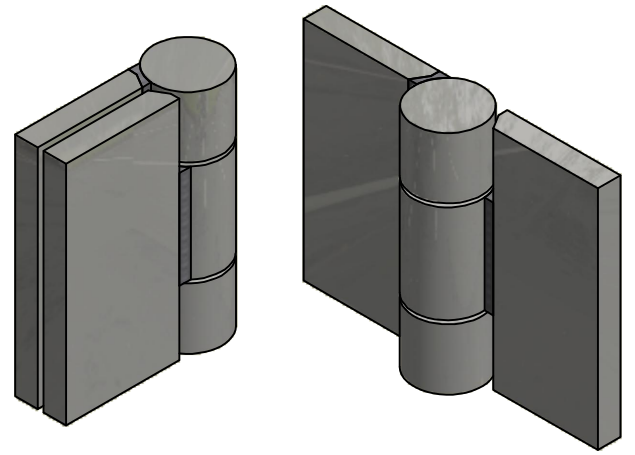
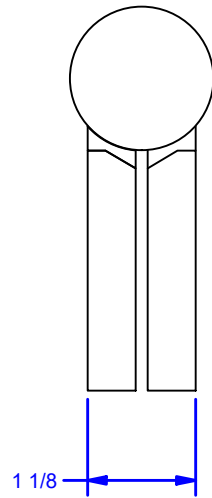
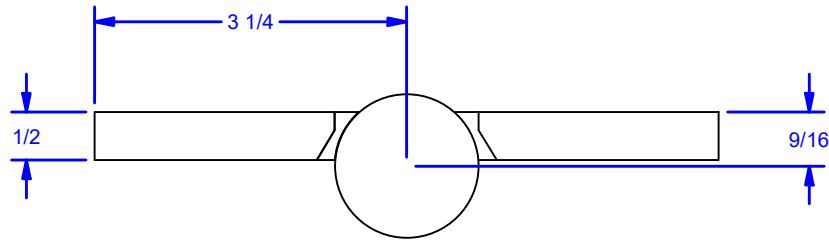
1

4

3

2

1



D

D

C

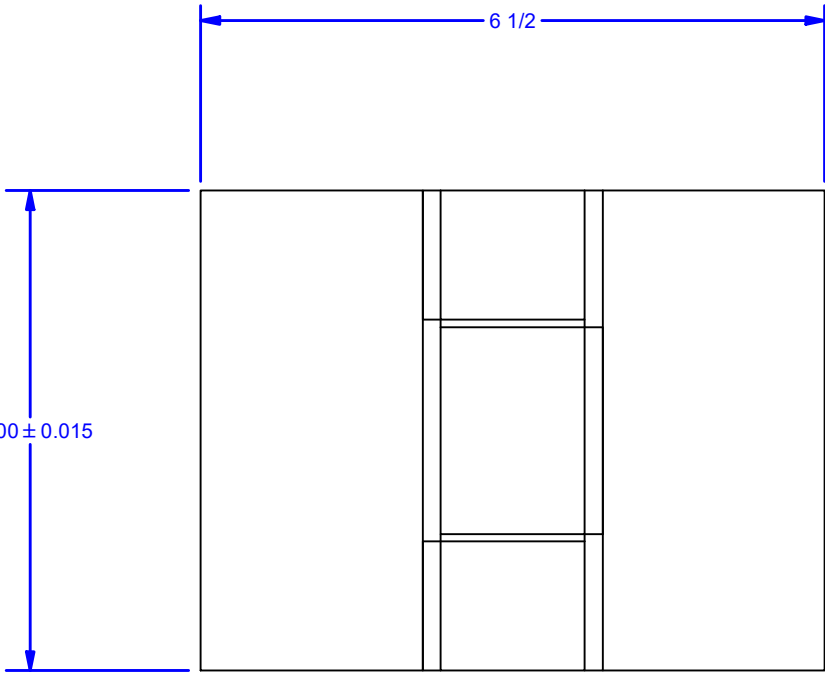
C

B

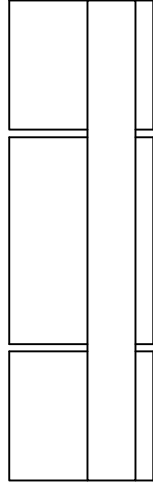
B

A

A



- Thrust Capacity: 2,000 lbs
- Radial Capacity: 800 lbs
- Torque to Operate Door: 5 lb-in
- For weld on applications: Minimum fillet weld size of 1/4" on (3) sides of each hinge leaf. Weld interpass temperature should not exceed 225 Degrees F



Optional Material: 304 Stainless Steel or 316 Stainless Steel

FINISHES:

Standard: Prime Ptd.

Optional:

- 304 Stainless Steel - 2B Mill Finish
- 316 Stainless Steel - 2B Mill Finish

DWG #: CBI8500
 DRAWN:BCM 9/1/2009
 SHEET #4
 File: 0000881.idw

ALL DIMENSIONS IN INCHES

THE INFORMATION CONTAINED IN THIS DRAWING IS THE SOLE PROPERTY OF CROWN INDUSTRIAL. ANY REPRODUCTION IN PART OR AS A WHOLE WITHOUT THE WRITTEN PERMISSION OF CROWN INDUSTRIAL IS PROHIBITED.	ID #:	0000667-06	STOCK PART #:	CBI8513
	MATERIAL:	Hot Roll Steel		
DESCRIPTION: Precision High Capacity Full Mortise Hinge, No Bolt Holes				
FINISH:	# PCS:	REV:	A	



CROWN INDUSTRIAL
 So. San Francisco, Ca
 (650) 952-5150
 www.crown-industrial.com

4

3

2

1

4

3

2

1

D

D

C

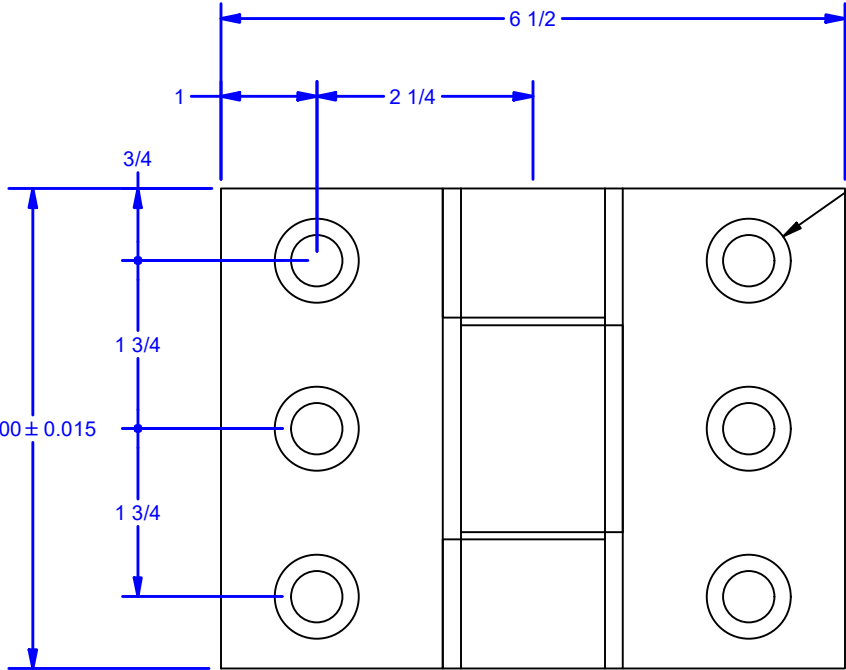
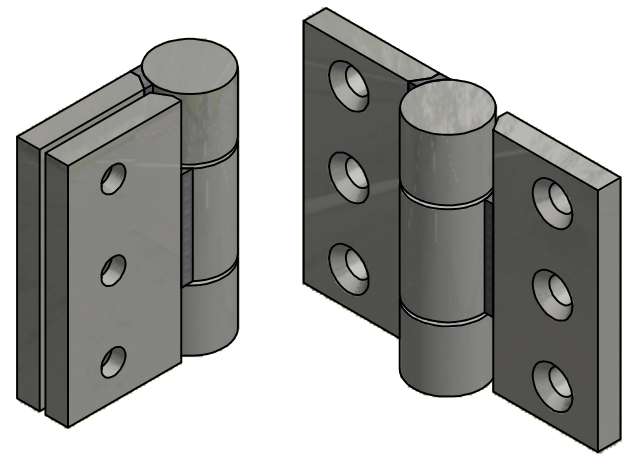
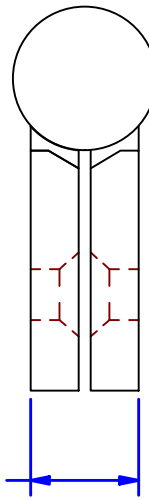
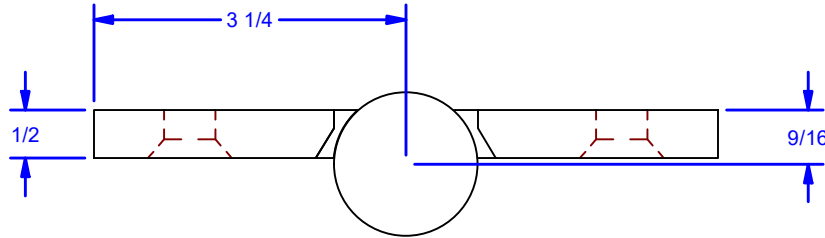
C

B

B

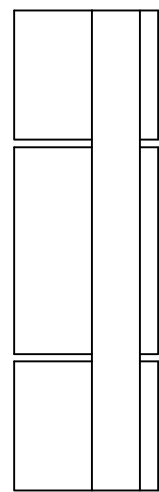
A

A



6X $\phi 17/32$ THRU
 $\sphericalangle \phi 7/8 \times 82^\circ$
 For 1/2 Flat Head Socket Machine Screw

- Thrust Capacity: 2,000 lbs
- Radial Capacity: 800 lbs
- Torque to Operate Door: 5 lb-in
- Minimum thread engagement into reinforcing member shall be equal to bolt diameter.



Optional Material: 304 Stainless Steel or 316 Stainless Steel

- FINISHES:**
 Standard: Prime Ptd.
 Optional:
- 304 Stainless Steel - 2B Mill Finish
 - 316 Stainless Steel - 2B Mill Finish

DWG #: CBI8500
 DRAWN:BCM 9/1/2009
 SHEET #5
 File: 0000881.idw

ALL DIMENSIONS IN INCHES

THE INFORMATION CONTAINED IN THIS DRAWING IS THE SOLE PROPERTY OF CROWN INDUSTRIAL. ANY REPRODUCTION IN PART OR AS A WHOLE WITHOUT THE WRITTEN PERMISSION OF CROWN INDUSTRIAL IS PROHIBITED.	ID #:	0000667-05	STOCK PART #:	CBI8513x2C
	MATERIAL:	Hot Roll Steel		
DESCRIPTION: Precision High Capacity Full Mortise Hinge, 1/2 Flat Head Bolt Holes				
FINISH:	# PCS:	REV:	A	



CROWN INDUSTRIAL
 So. San Francisco, Ca
 (650) 952-5150
 www.crown-industrial.com

4

3

2

1



4

3

2

1

D

D

C

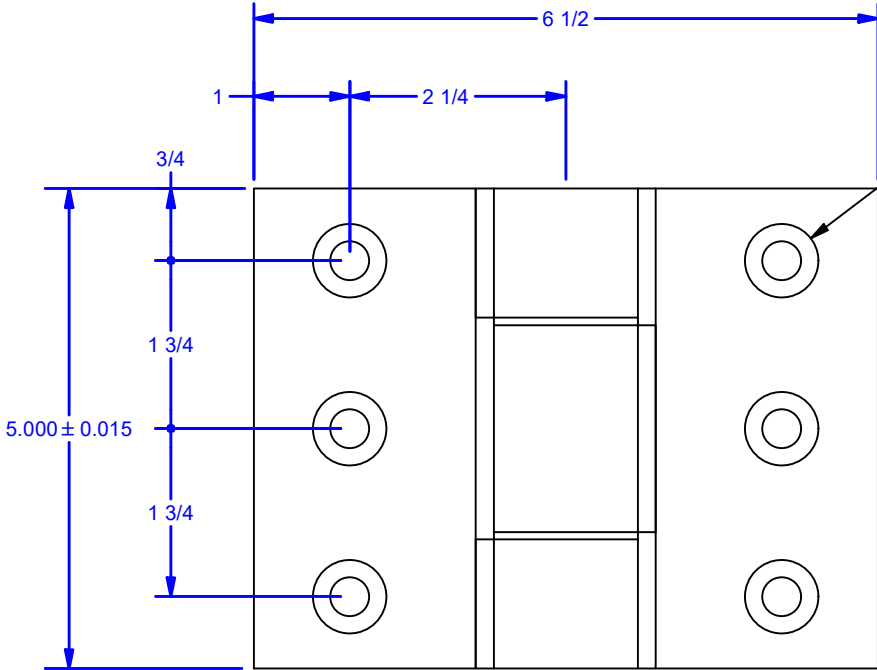
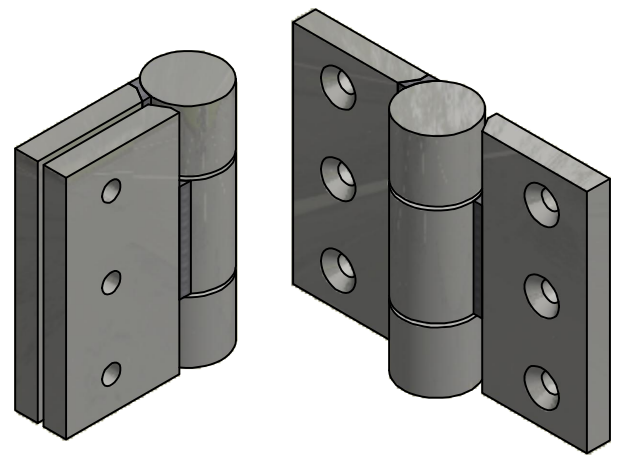
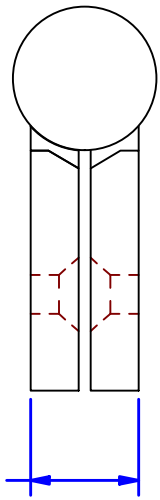
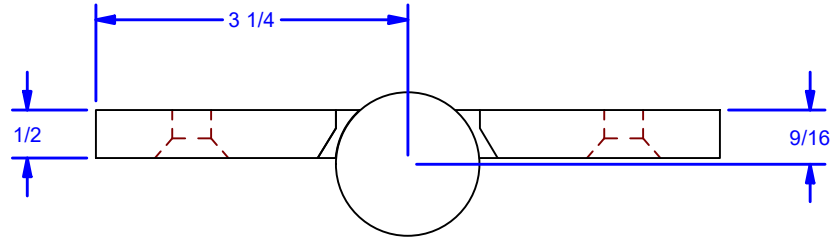
C

B

B

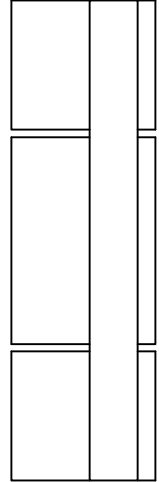
A

A



6X $\varnothing 13/32$ THRU
 $\sphericalangle \varnothing 49/64$ X 82°
 For 3/8 Flat Head Socket Machine Screw

- Thrust Capacity: 2,000 lbs
- Radial Capacity: 800 lbs
- Torque to Operate Door: 5 lb-in
- Minimum thread engagement into reinforcing member shall be equal to bolt diameter.



Optional Material: 304 Stainless Steel or 316 Stainless Steel

- FINISHES:**
 Standard: Prime Ptd.
 Optional:
- 304 Stainless Steel - 2B Mill Finish
 - 316 Stainless Steel - 2B Mill Finish

DWG #: CBI8500
 DRAWN: BCM 9/1/2009
 SHEET #6
 File: 0000881.idw

ALL DIMENSIONS IN INCHES

THE INFORMATION CONTAINED IN THIS DRAWING IS THE SOLE PROPERTY OF CROWN INDUSTRIAL. ANY REPRODUCTION IN PART OR AS A WHOLE WITHOUT THE WRITTEN PERMISSION OF CROWN INDUSTRIAL IS PROHIBITED.	ID #:	STOCK PART #:
	0000667-04	CBI8513x1C
DESCRIPTION:	MATERIAL:	
Precision High Capacity Full Mortise Hinge, 3/8 Flat Head Bolt Holes	Hot Roll Steel	
FINISH:	# PCS:	REV:
		A



CROWN INDUSTRIAL
 So. San Francisco, Ca
 (650) 952-5150
 www.crown-industrial.com

4

3

2

1

