

4

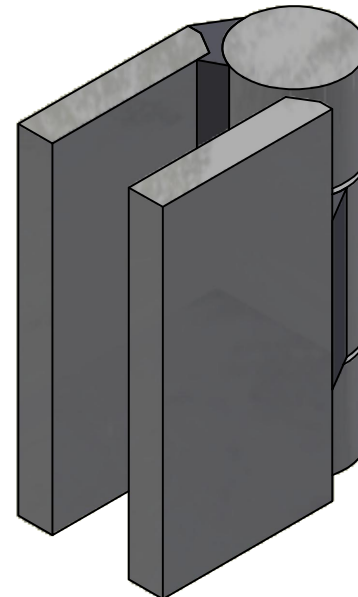
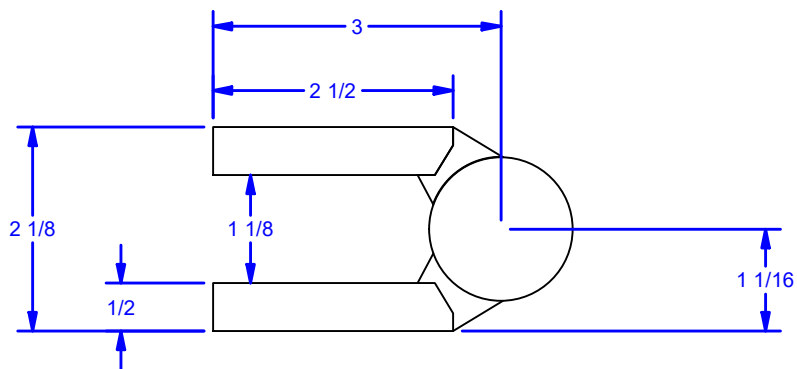
3

2

1

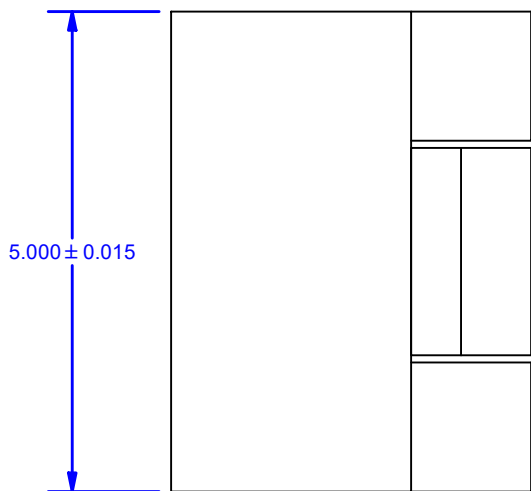
D

D



C

C



B

B

- Thrust Capacity: 800 lbs
- Radial Capacity: 320 lbs
- Torque to Operate Door: 50 lb-in
- For weld on applications: Minimum fillet weld size of 1/4" on (3) sides of each hinge leaf. Weld interpass temperature should not exceed 225 Degrees F

Optional Material: 304 Stainless Steel or 316 Stainless Steel

FINISHES:

Standard: Prime Ptd.

Optional:

- 304 Stainless Steel - 2B Mill Finish
- 316 Stainless Steel - 2B Mill Finish

ALL DIMENSIONS IN INCHES

THE INFORMATION CONTAINED IN THIS DRAWING IS THE SOLE PROPERTY OF CROWN INDUSTRIAL. ANY REPRODUCTION IN PART OR AS A WHOLE WITHOUT THE WRITTEN PERMISSION OF CROWN INDUSTRIAL IS PROHIBITED.	ID #:	0000878-16	STOCK PART #:	CBI8507
	MATERIAL:		Hot Roll Steel	
DESCRIPTION:				
High Capacity, Gap Hinge, 800lb Thrust, No Holes				
FINISH:			# PCS:	REV:



CROWN INDUSTRIAL

So. San Francisco, Ca
(650) 952-5150

www.crown-industrial.com

DWG #: CBI8500
DRAWN:BCM 9/1/2009
SHEET #7

File: 0000881.idw

4

3

2

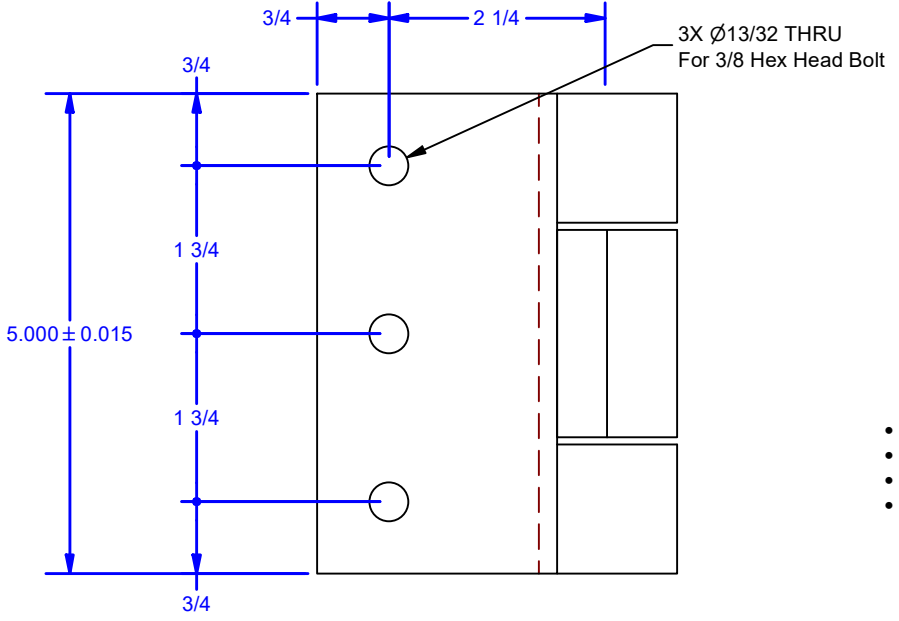
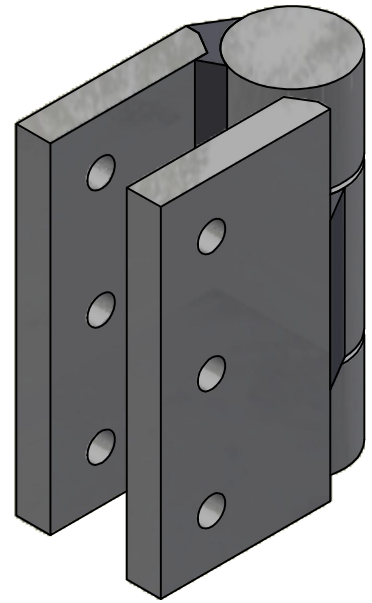
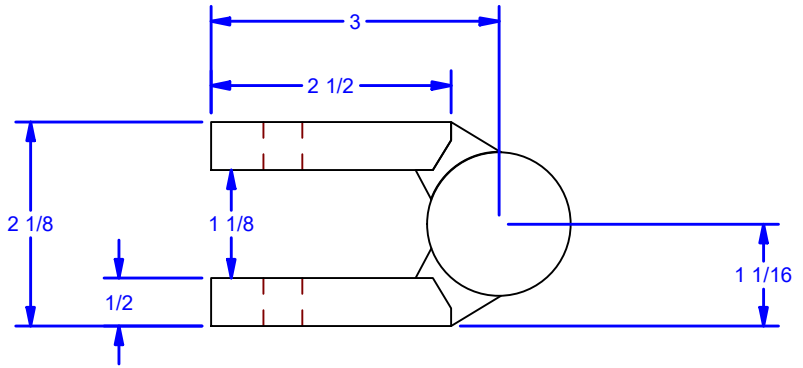
1

A

A



4 | 3 | 2 | 1



- Thrust Capacity: 800 lbs
- Radial Capacity: 320 lbs
- Torque to Operate Door: 50 lb-in
- Minimum thread engagement into reinforcing member shall be equal to bolt diameter.

Optional Material: 304 Stainless Steel or 316 Stainless Steel

- FINISHES:**
Standard: Prime Ptd.
Optional:
- 304 Stainless Steel - 2B Mill Finish
 - 316 Stainless Steel - 2B Mill Finish

DWG #: CBI8500
 DRAWN:BCM 9/1/2009
 SHEET #8
 File: 0000881.idw

ALL DIMENSIONS IN INCHES

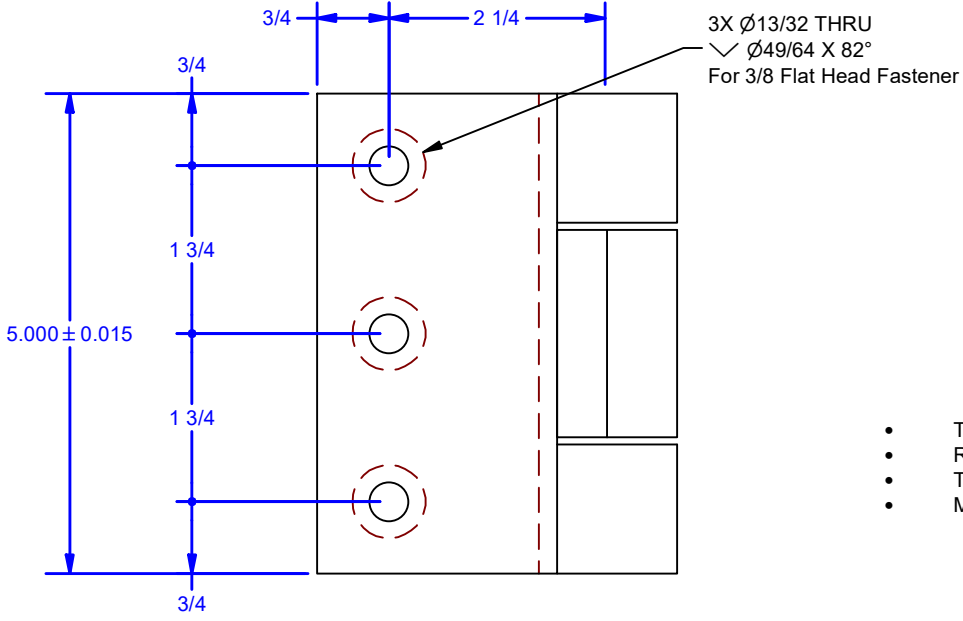
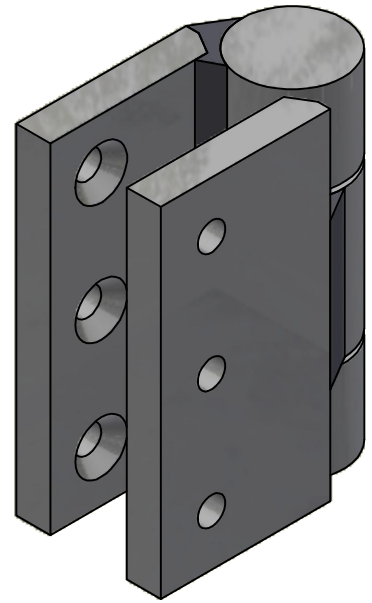
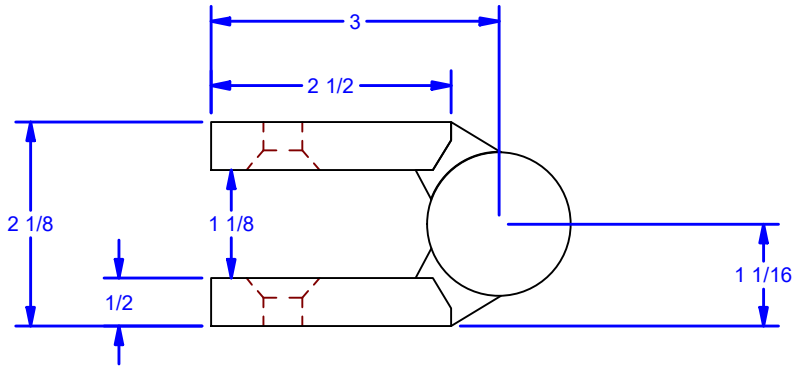
THE INFORMATION CONTAINED IN THIS DRAWING IS THE SOLE PROPERTY OF CROWN INDUSTRIAL. ANY REPRODUCTION IN PART OR AS A WHOLE WITHOUT THE WRITTEN PERMISSION OF CROWN INDUSTRIAL IS PROHIBITED.	ID #:	STOCK PART #:
	0000878-04	CBI8507x1
MATERIAL:		
Hot Roll Steel		
DESCRIPTION:		
High Capacity, Gap Hinge, 800lb Thrust, 3/8 Holes		
FINISH:	# PCS:	REV:



CROWN INDUSTRIAL
 So. San Francisco, Ca
 (650) 952-5150
 www.crown-industrial.com

4 | 3 | 2 | 1

4 3 2 1



- Thrust Capacity: 800 lbs
- Radial Capacity: 320 lbs
- Torque to Operate Door: 50 lb-in
- Minimum thread engagement into reinforcing member shall be equal to bolt diameter.

Optional Material: 304 Stainless Steel or 316 Stainless Steel

FINISHES:
 Standard: Prime Ptd.
 Optional:
 • 304 Stainless Steel - 2B Mill Finish
 • 316 Stainless Steel - 2B Mill Finish

ALL DIMENSIONS IN INCHES

THE INFORMATION CONTAINED IN THIS DRAWING IS THE SOLE PROPERTY OF CROWN INDUSTRIAL. ANY REPRODUCTION IN PART OR AS A WHOLE WITHOUT THE WRITTEN PERMISSION OF CROWN INDUSTRIAL IS PROHIBITED.	ID #:	0000878-18	STOCK PART #:	CBI8507x1C
	MATERIAL:		Hot Roll Steel	
DESCRIPTION: High Capacity, Gap Hinge, 800lb Thrust, 3/8 Countersunk Holes				
FINISH:		# PCS:	REV:	

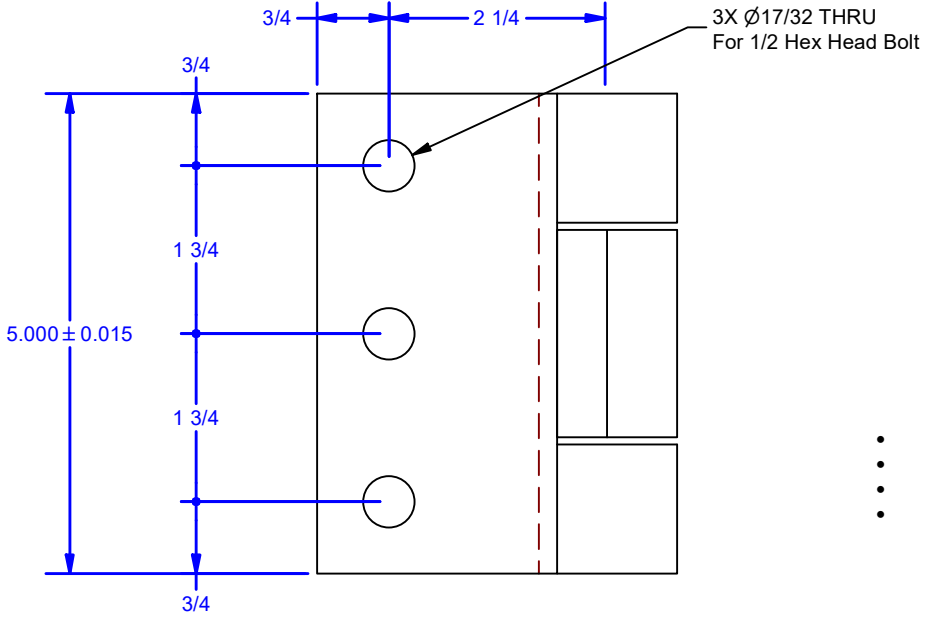
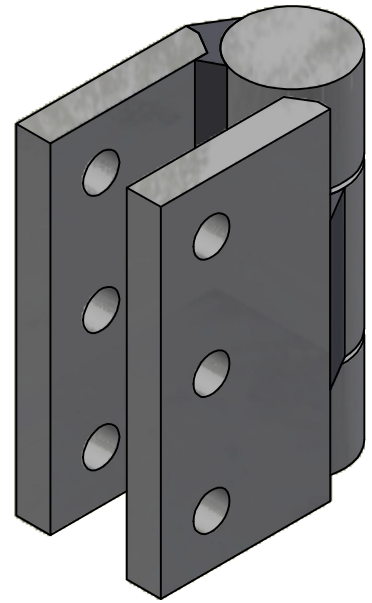
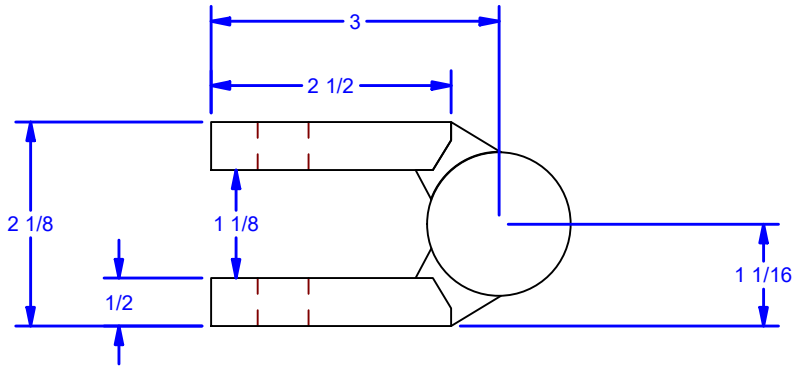


CROWN INDUSTRIAL
 So. San Francisco, Ca
 (650) 952-5150
www.crown-industrial.com

DWG #: CBI8500
 DRAWN: BCM 9/1/2009
 SHEET #9
 File: 0000881.idw

4 3 2 1

4 | 3 | 2 | 1



- Thrust Capacity: 800 lbs
- Radial Capacity: 320 lbs
- Torque to Operate Door: 50 lb-in
- Minimum thread engagement into reinforcing member shall be equal to bolt diameter.

Optional Material: 304 Stainless Steel or 316 Stainless Steel

- FINISHES:**
- Standard: Prime Ptd.
- Optional:
- 304 Stainless Steel - 2B Mill Finish
 - 316 Stainless Steel - 2B Mill Finish

DWG #: CBI8500
 DRAWN:BCM 9/1/2009
 SHEET #10
 File: 0000881.idw

ALL DIMENSIONS IN INCHES

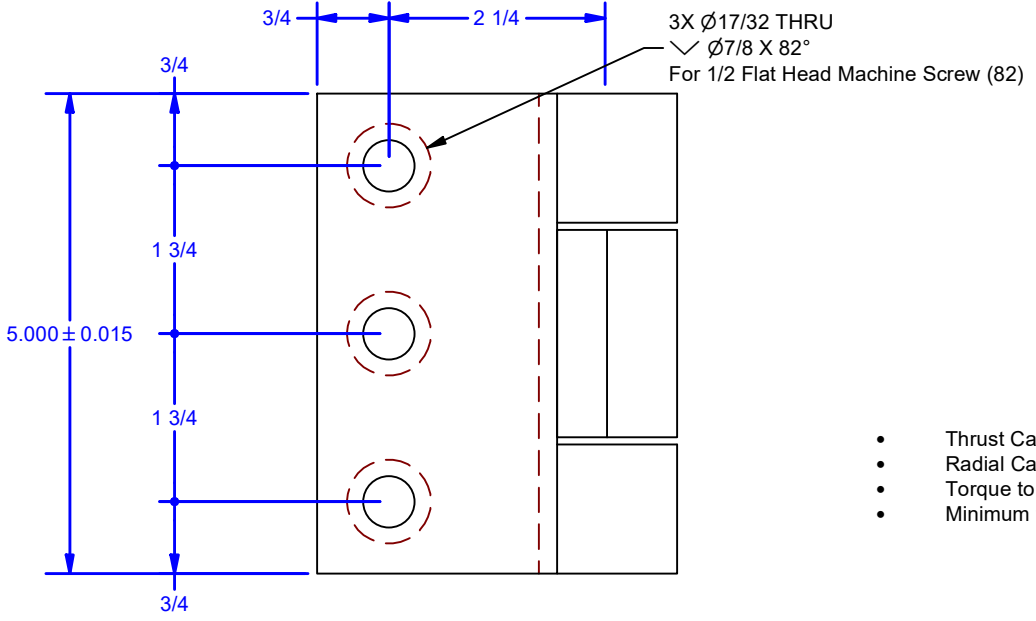
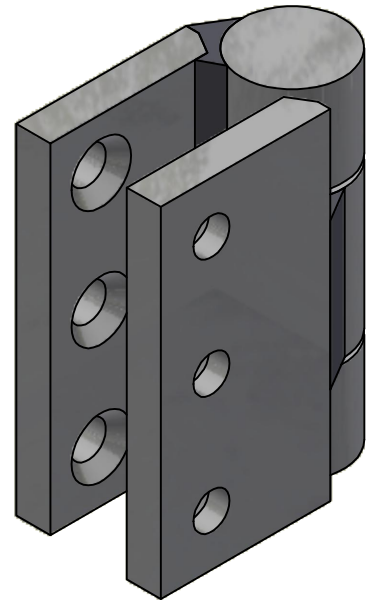
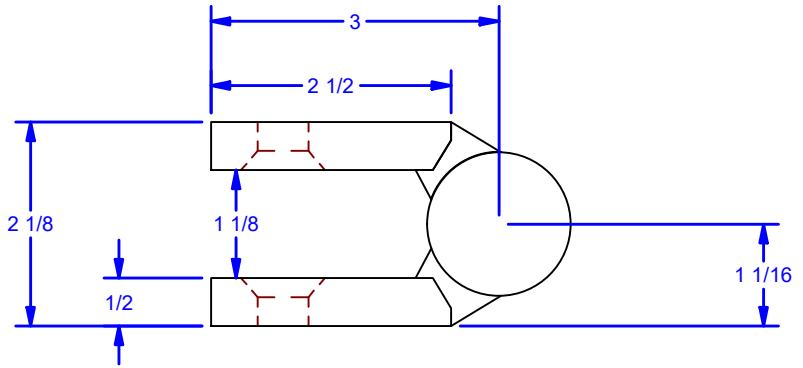
THE INFORMATION CONTAINED IN THIS DRAWING IS THE SOLE PROPERTY OF CROWN INDUSTRIAL. ANY REPRODUCTION IN PART OR AS A WHOLE WITHOUT THE WRITTEN PERMISSION OF CROWN INDUSTRIAL IS PROHIBITED.	ID #:	0000878-17	STOCK PART #:	CBI-8507x2
	MATERIAL:		Hot Roll Steel	
DESCRIPTION:				
High Capacity, Gap Hinge, 800lb Thrust, 1/2 Holes				
FINISH:	# PCS:	REV:		



CROWN INDUSTRIAL
 So. San Francisco, Ca
 (650) 952-5150
 www.crown-industrial.com

4 | 3 | 2 | 1

4 | 3 | 2 | 1



- Thrust Capacity: 800 lbs
- Radial Capacity: 320 lbs
- Torque to Operate Door: 50 lb-in
- Minimum thread engagement into reinforcing member shall be equal to bolt diameter.

Optional Material: 304 Stainless Steel or 316 Stainless Steel

FINISHES:
 Standard: Prime Ptd.
 Optional:
 • 304 Stainless Steel - 2B Mill Finish
 • 316 Stainless Steel - 2B Mill Finish

ALL DIMENSIONS IN INCHES

THE INFORMATION CONTAINED IN THIS DRAWING IS THE SOLE PROPERTY OF CROWN INDUSTRIAL. ANY REPRODUCTION IN PART OR AS A WHOLE WITHOUT THE WRITTEN PERMISSION OF CROWN INDUSTRIAL IS PROHIBITED.	ID #: 0000878-19	STOCK PART #: CBI-8507x2C
	MATERIAL: Hot Roll Steel	
DESCRIPTION: High Capacity, Gap Hinge, 800lb Thrust, 1/2 Countersunk Holes		
FINISH:	# PCS:	REV:



CROWN INDUSTRIAL
 So. San Francisco, Ca
 (650) 952-5150
www.crown-industrial.com

DWG #: CBI8500
 DRAWN:BCM 9/1/2009
 SHEET #11
 File: 0000881.idw

4 | 3 | 2 | 1

D
C
B
A

D
C
B
A

4

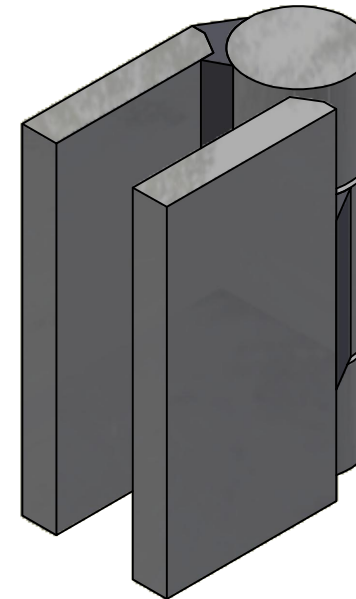
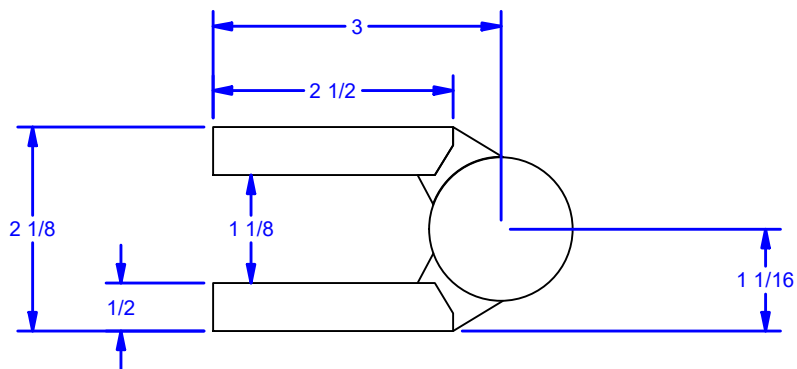
3

2

1

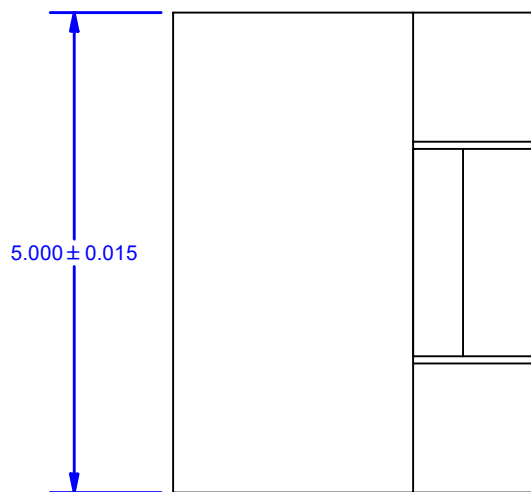
D

D



C

C



- Thrust Capacity: 2,000 lbs
- Radial Capacity: 800 lbs
- Torque to Operate Door: 5 lb-in
- For weld on applications: Minimum fillet weld size of 1/4" on (3) sides of each hinge leaf. Weld interpass temperature should not exceed 225 Degrees F

Optional Material: 304 Stainless Steel or 316 Stainless Steel

FINISHES:

Standard: Prime Ptd.

Optional:

- 304 Stainless Steel - 2B Mill Finish
- 316 Stainless Steel - 2B Mill Finish

DWG #: CBI8500
 DRAWN:BCM 9/1/2009
 SHEET #12

File: 0000881.idw

ALL DIMENSIONS IN INCHES

THE INFORMATION CONTAINED IN THIS DRAWING IS THE SOLE PROPERTY OF CROWN INDUSTRIAL. ANY REPRODUCTION IN PART OR AS A WHOLE WITHOUT THE WRITTEN PERMISSION OF CROWN INDUSTRIAL IS PROHIBITED.	ID #: 0000878-11	STOCK PART #: CBI-8512
	MATERIAL: Hot Roll Steel	
DESCRIPTION: High Capacity, Gap Hinge, 2,000lb Thrust, No Holes		
FINISH:	# PCS:	REV:



CROWN INDUSTRIAL

So. San Francisco, Ca
 (650) 952-5150

www.crown-industrial.com

4

3

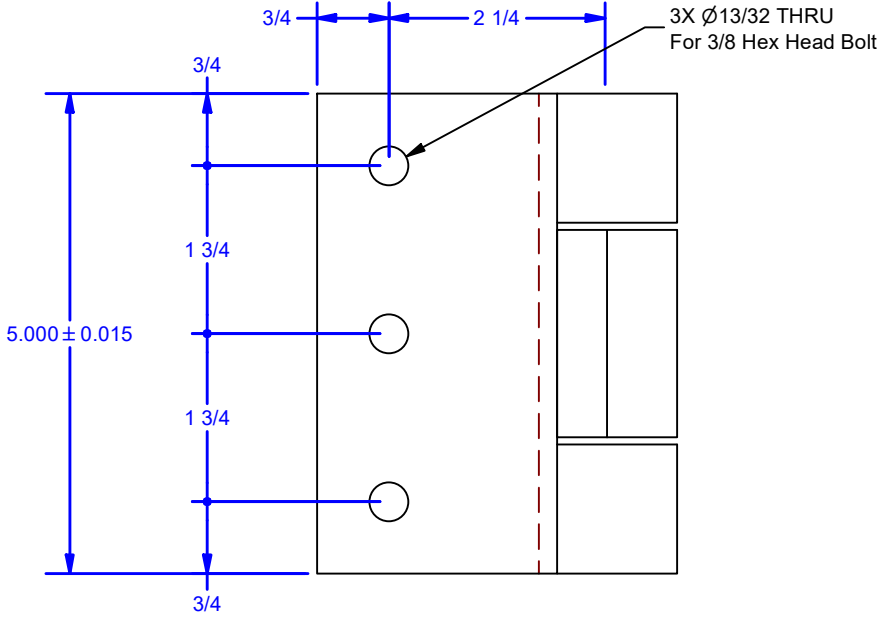
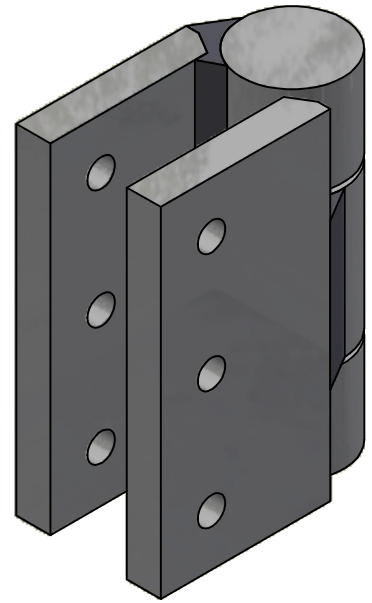
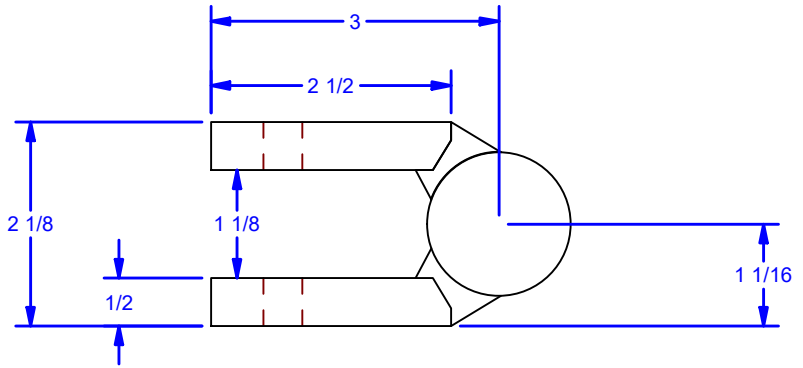
2

1

A

A

4 | 3 | 2 | 1



- Thrust Capacity: 2,000 lbs
- Radial Capacity: 800 lbs
- Torque to Operate Door: 5 lb-in
- Minimum thread engagement into reinforcing member shall be equal to bolt diameter.

Optional Material: 304 Stainless Steel or 316 Stainless Steel

FINISHES:

Standard: Prime Ptd.

Optional:

- 304 Stainless Steel - 2B Mill Finish
- 316 Stainless Steel - 2B Mill Finish

DWG #: CBI8500
 DRAWN:BCM 9/1/2009
 SHEET #13
 File: 0000881.idw

ALL DIMENSIONS IN INCHES

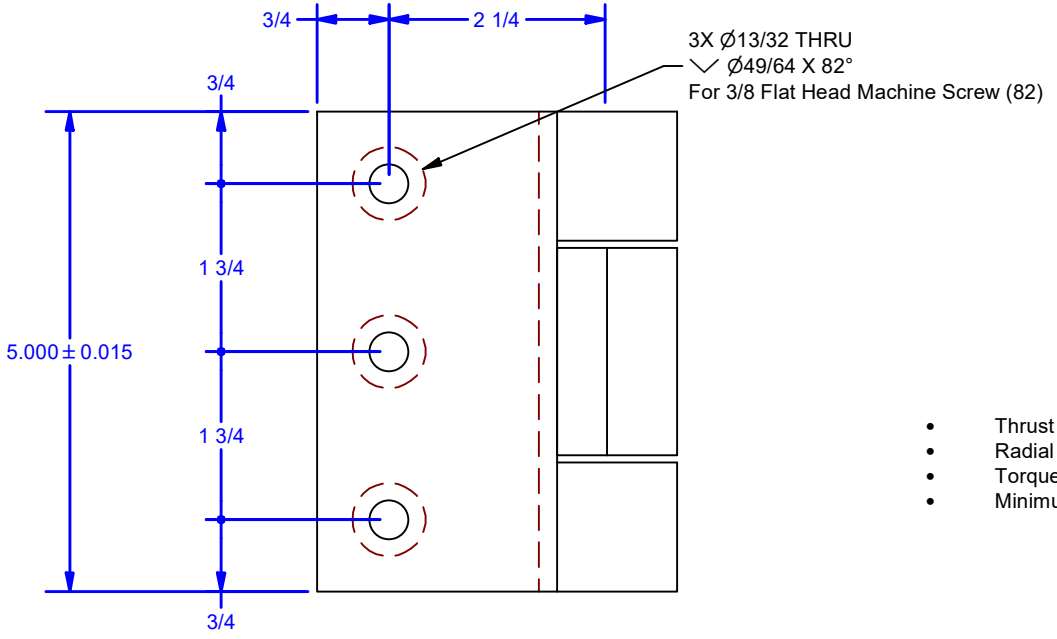
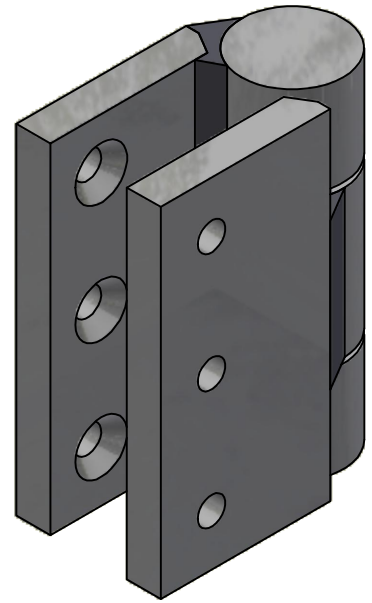
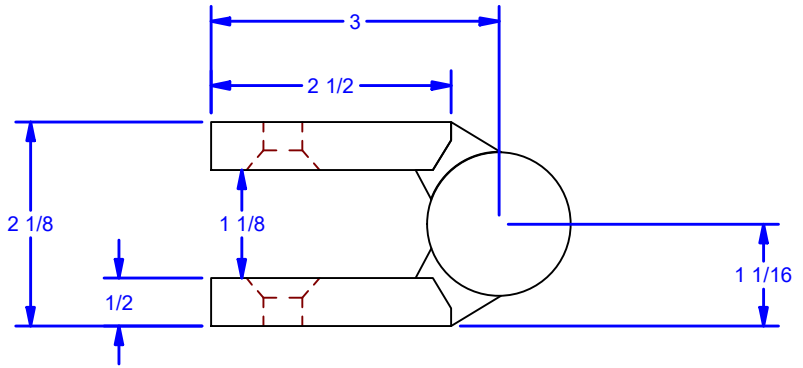
THE INFORMATION CONTAINED IN THIS DRAWING IS THE SOLE PROPERTY OF CROWN INDUSTRIAL. ANY REPRODUCTION IN PART OR AS A WHOLE WITHOUT THE WRITTEN PERMISSION OF CROWN INDUSTRIAL IS PROHIBITED.	ID #:	0000878-05	STOCK PART #:	CBI-8512x1
	MATERIAL:	Hot Roll Steel		
DESCRIPTION: High Capacity, Gap Hinge, 2,000lb Thrust, 3/8 Holes				
FINISH:	# PCS:	REV:		



CROWN INDUSTRIAL
 So. San Francisco, Ca
 (650) 952-5150
 www.crown-industrial.com

4 | 3 | 2 | 1

4 | 3 | 2 | 1



- Thrust Capacity: 2,000 lbs
- Radial Capacity: 800 lbs
- Torque to Operate Door: 5 lb-in
- Minimum thread engagement into reinforcing member shall be equal to bolt diameter.

Optional Material: 304 Stainless Steel or 316 Stainless Steel

FINISHES:
 Standard: Prime Ptd.
 Optional:
 • 304 Stainless Steel - 2B Mill Finish
 • 316 Stainless Steel - 2B Mill Finish

DWG #: CBI8500
 DRAWN: BCM 9/1/2009
 SHEET #14
 File: 0000881.idw

ALL DIMENSIONS IN INCHES

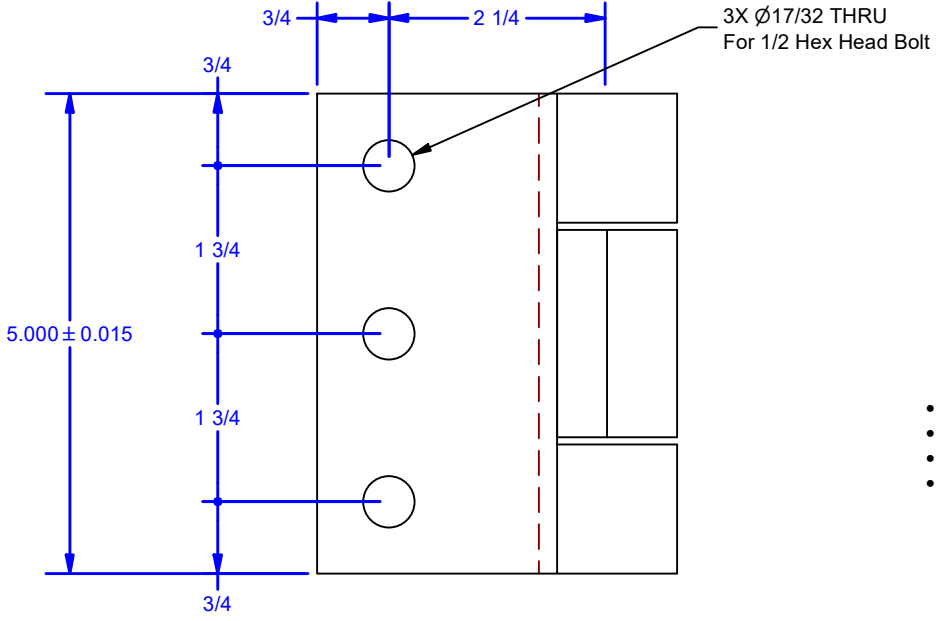
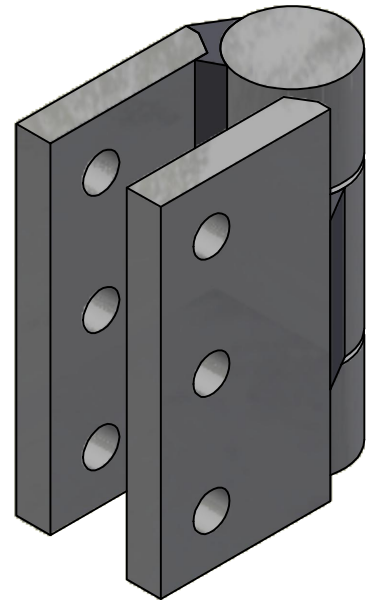
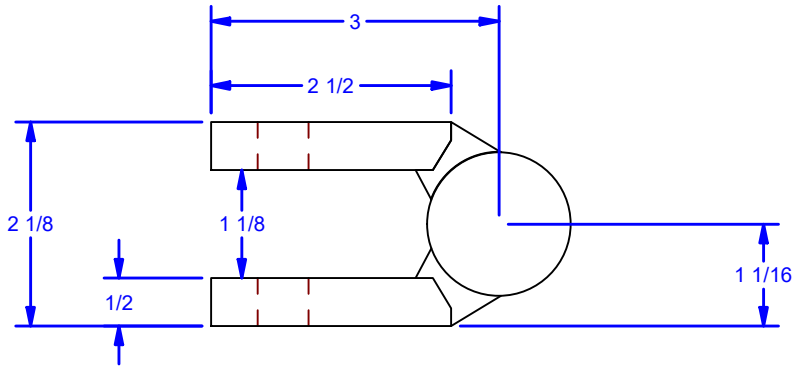
THE INFORMATION CONTAINED IN THIS DRAWING IS THE SOLE PROPERTY OF CROWN INDUSTRIAL. ANY REPRODUCTION IN PART OR AS A WHOLE WITHOUT THE WRITTEN PERMISSION OF CROWN INDUSTRIAL IS PROHIBITED.	ID #:	0000878-20	STOCK PART #:	CBI-8512x1C
	MATERIAL:	Hot Roll Steel		
DESCRIPTION: High Capacity, Gap Hinge, 2,000lb Thrust, 3/8 Countersunk Holes				
FINISH:	# PCS:	REV:		



CROWN INDUSTRIAL
 So. San Francisco, Ca
 (650) 952-5150
www.crown-industrial.com

4 | 3 | 2 | 1

4 | 3 | 2 | 1



- Thrust Capacity: 2,000 lbs
- Radial Capacity: 800 lbs
- Torque to Operate Door: 5 lb-in
- Minimum thread engagement into reinforcing member shall be equal to bolt diameter.

Optional Material: 304 Stainless Steel or 316 Stainless Steel

FINISHES:
 Standard: Prime Ptd.
 Optional:
 • 304 Stainless Steel - 2B Mill Finish
 • 316 Stainless Steel - 2B Mill Finish

DWG #: CBI8500
 DRAWN:BCM 9/1/2009
 SHEET #15
 File: 0000881.idw

ALL DIMENSIONS IN INCHES

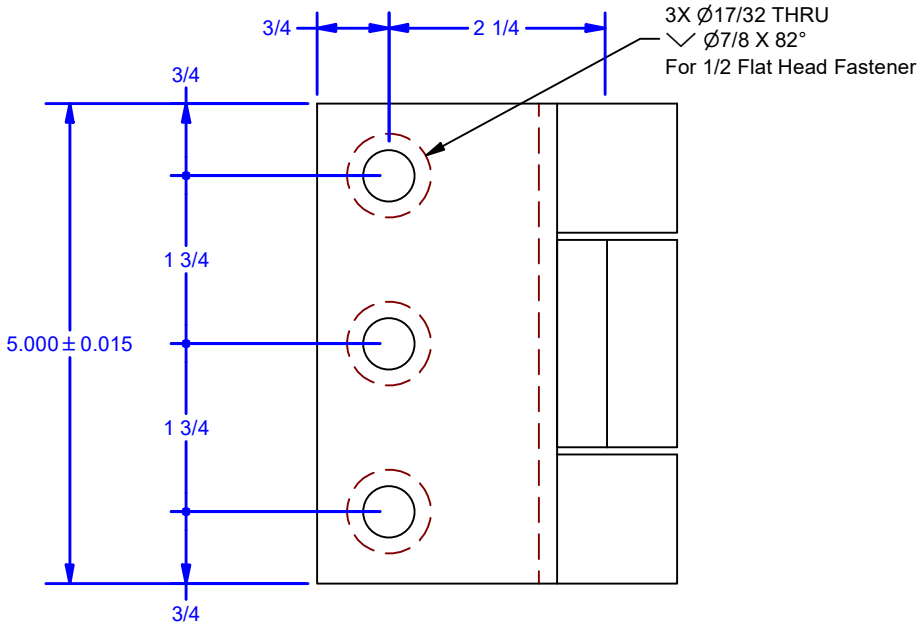
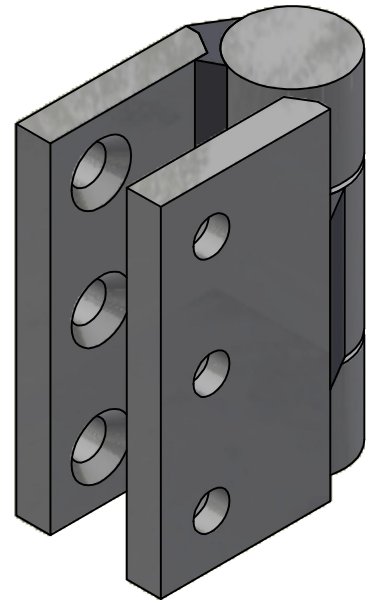
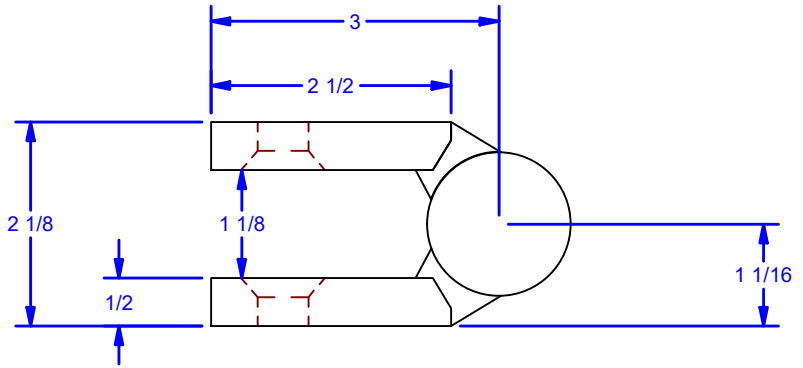
THE INFORMATION CONTAINED IN THIS DRAWING IS THE SOLE PROPERTY OF CROWN INDUSTRIAL. ANY REPRODUCTION IN PART OR AS A WHOLE WITHOUT THE WRITTEN PERMISSION OF CROWN INDUSTRIAL IS PROHIBITED.	ID #:	0000878-06	STOCK PART #:	CBI-8512x2
	MATERIAL:	Hot Roll Steel		
DESCRIPTION: High Capacity, Gap Hinge, 2,000lb Thrust, 1/2 Holes				
FINISH:	# PCS:	REV:		



CROWN INDUSTRIAL
 So. San Francisco, Ca
 (650) 952-5150
 www.crown-industrial.com

4 | 3 | 2 | 1

4 | 3 | 2 | 1



- Thrust Capacity: 2,000 lbs
- Radial Capacity: 800 lbs
- Torque to Operate Door: 5 lb-in
- Minimum thread engagement into reinforcing member shall be equal to bolt diameter.

Optional Material: 304 Stainless Steel or 316 Stainless Steel

FINISHES:
 Standard: Prime Ptd.
 Optional:
 • 304 Stainless Steel - 2B Mill Finish
 • 316 Stainless Steel - 2B Mill Finish

DWG #: CBI8500
 DRAWN:BCM 9/1/2009
 SHEET #16
 File: 0000881.idw

ALL DIMENSIONS IN INCHES

THE INFORMATION CONTAINED IN THIS DRAWING IS THE SOLE PROPERTY OF CROWN INDUSTRIAL. ANY REPRODUCTION IN PART OR AS A WHOLE WITHOUT THE WRITTEN PERMISSION OF CROWN INDUSTRIAL IS PROHIBITED.	ID #:	0000878-21	STOCK PART #:	CBI-8512x2C
	MATERIAL:	Hot Roll Steel		
DESCRIPTION: High Capacity, Gap Hinge, 2,000lb Thrust, 1/2 Holes Countersunk				
# Holes	# PCS	REV:		



CROWN INDUSTRIAL
 So. San Francisco, Ca
 (650) 952-5150
 www.crown-industrial.com

4 | 3 | 2 | 1

4

3

2

1

D

D

C

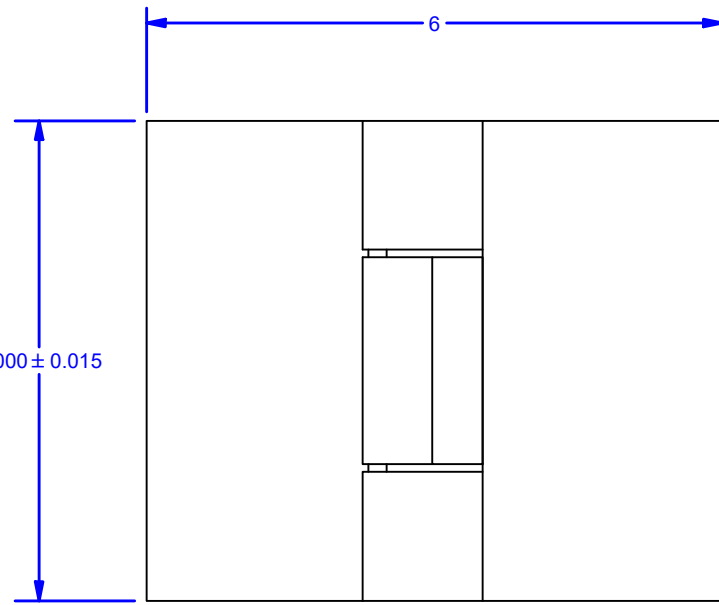
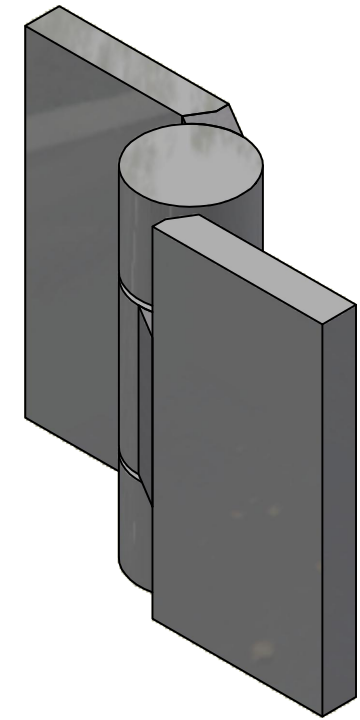
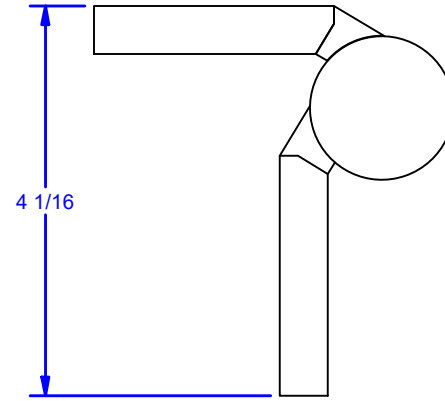
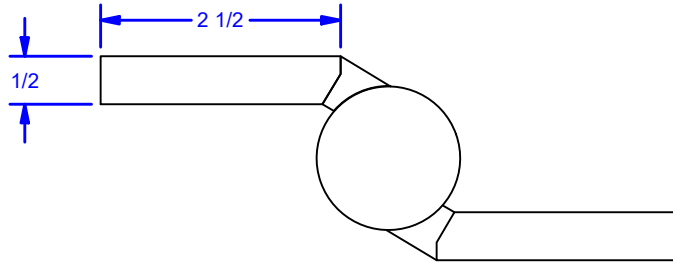
C

B

B

A

A



- Thrust Capacity: 800 lbs
- Radial Capacity: 320 lbs
- Torque to Operate Door: 50 lb-in
- For weld on applications: Minimum fillet weld size of 1/4" on (3) sides of each hinge leaf. Weld interpass temperature should not exceed 225 Degrees F

Optional Material: 304 Stainless Steel or 316 Stainless Steel

FINISHES:

- Standard: Prime Ptd.
 Optional:
- 304 Stainless Steel - 2B Mill Finish
 - 316 Stainless Steel - 2B Mill Finish

DWG #: CBI8500
 DRAWN:BCM 1/28/2016
 SHEET #17
 File: 0000881.idw

ALL DIMENSIONS IN INCHES

THE INFORMATION CONTAINED IN THIS DRAWING IS THE SOLE PROPERTY OF CROWN INDUSTRIAL. ANY REPRODUCTION IN PART OR AS A WHOLE WITHOUT THE WRITTEN PERMISSION OF CROWN INDUSTRIAL IS PROHIBITED.	ID #:	0002212-01	STOCK PART #:	CBI8506
	MATERIAL:	Hot Roll Steel		
DESCRIPTION: Precision High Capacity Half Mortise Hinge, No Bolt Holes				
FINISH:	# PCS:	REV:	A	



CROWN INDUSTRIAL
 So. San Francisco, Ca
 (650) 952-5150
 www.crown-industrial.com

4

3

2

1



4

3

2

1

D

D

C

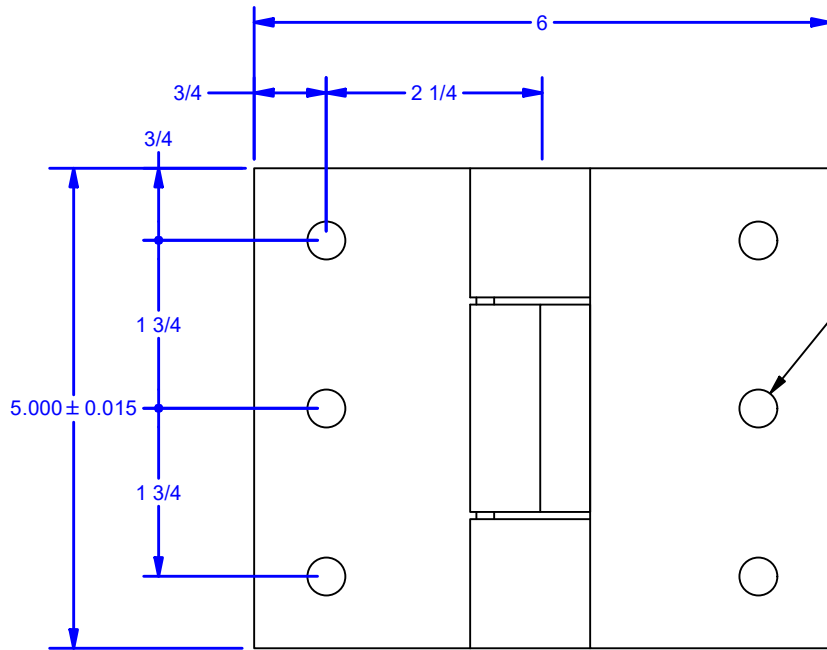
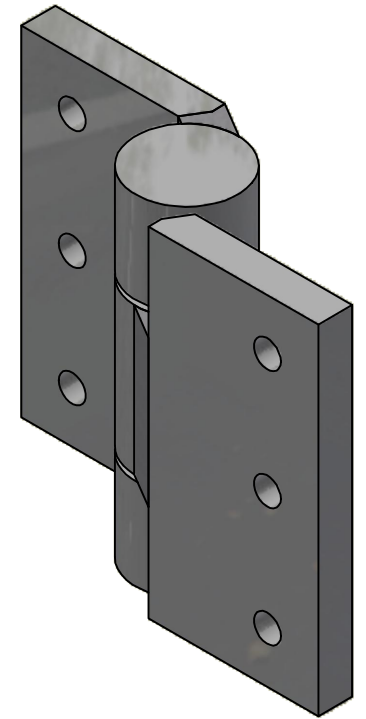
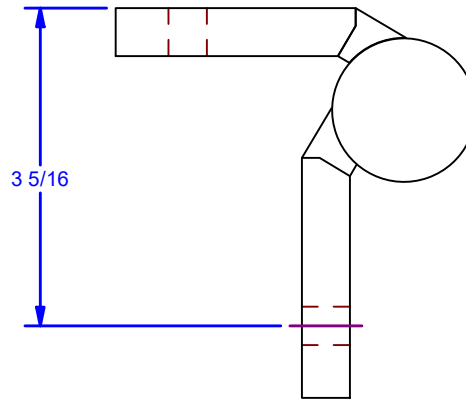
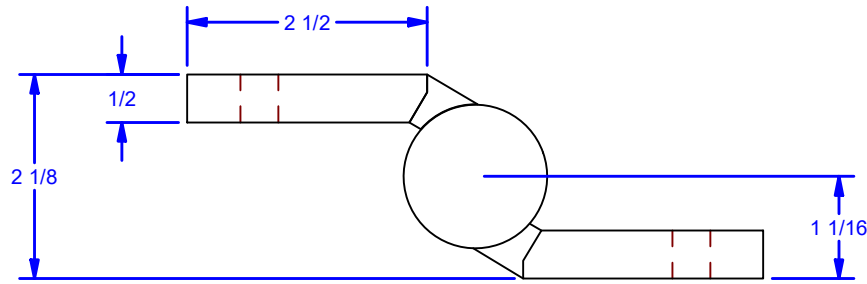
C

B

B

A

A



6X Ø25/64 THRU
For 3/8 Hex Head Bolt Grade 5

- Thrust Capacity: 800 lbs
- Radial Capacity: 320 lbs
- Torque to Operate Door: 50 lb-in
- Minimum thread engagement into reinforcing member shall be equal to bolt diameter.

Optional Material: 304 Stainless Steel or 316 Stainless Steel

FINISHES:
Standard: Prime Ptd.

- Optional:
- 304 Stainless Steel - 2B Mill Finish
 - 316 Stainless Steel - 2B Mill Finish

DWG #: CBI8500
DRAWN:BCM 1/28/2016
SHEET #18
File: 0000881.idw

ALL DIMENSIONS IN INCHES

THE INFORMATION CONTAINED IN THIS DRAWING IS THE SOLE PROPERTY OF CROWN INDUSTRIAL. ANY REPRODUCTION IN PART OR AS A WHOLE WITHOUT THE WRITTEN PERMISSION OF CROWN INDUSTRIAL IS PROHIBITED.	ID #:	0002212-02	STOCK PART #:	CBI8506x1
	MATERIAL:	Hot Roll Steel		
DESCRIPTION: Precision High Capacity Half Mortise Hinge, 3/8 Bolt Holes				
FINISH:	# PCS:	REV:	A	



CROWN INDUSTRIAL
So. San Francisco, Ca
(650) 952-5150
www.crown-industrial.com

4

3

2

1

A

4

3

2

1

D

D

C

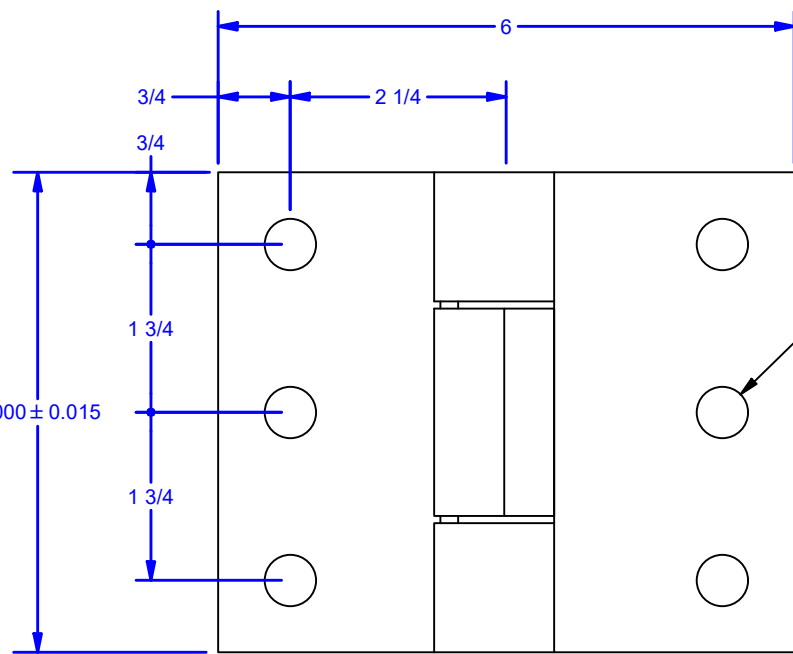
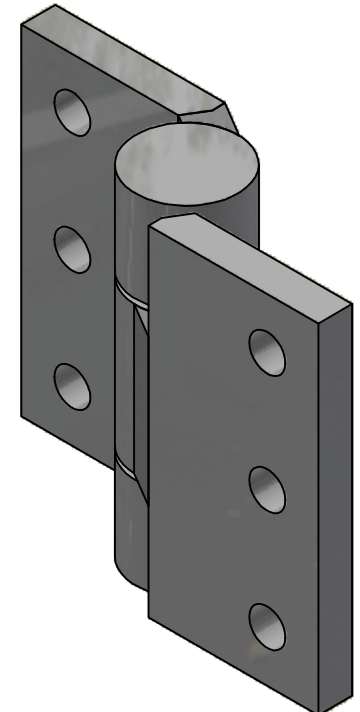
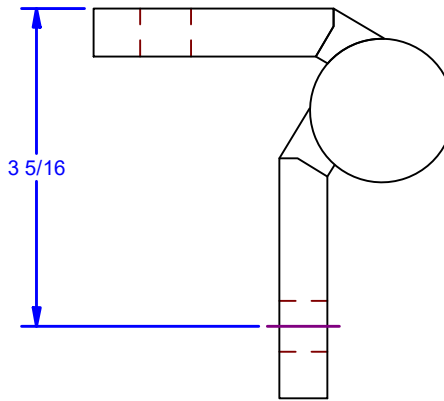
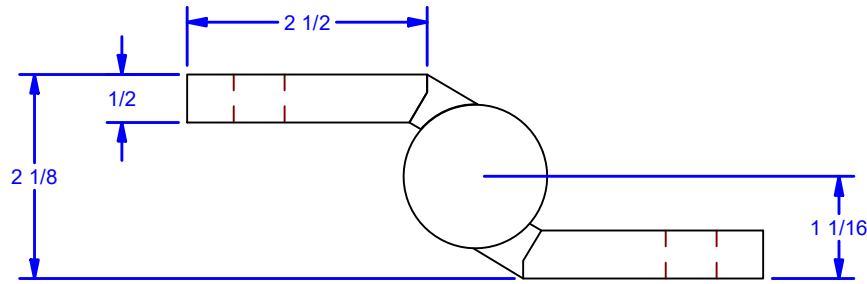
C

B

B

A

A



6X Ø17/32 THRU
For 1/2 Hex Head Bolt Grade 5

- Thrust Capacity: 800 lbs
- Radial Capacity: 320 lbs
- Torque to Operate Door: 50 lb-in
- Minimum thread engagement into reinforcing member shall be equal to bolt diameter.

Optional Material: 304 Stainless Steel or 316 Stainless Steel

FINISHES:

Standard: Prime Ptd.

Optional:

- 304 Stainless Steel - 2B Mill Finish
- 316 Stainless Steel - 2B Mill Finish

DWG #: CBI8500
DRAWN:BCM 1/28/2016
SHEET #19
File: 0000881.idw

ALL DIMENSIONS IN INCHES

THE INFORMATION CONTAINED IN THIS DRAWING IS THE SOLE PROPERTY OF CROWN INDUSTRIAL. ANY REPRODUCTION IN PART OR AS A WHOLE WITHOUT THE WRITTEN PERMISSION OF CROWN INDUSTRIAL IS PROHIBITED.	ID #:	0002212-03	STOCK PART #:	CBI8506x2
	MATERIAL:	Hot Roll Steel		
DESCRIPTION: Precision High Capacity Half Mortise Hinge, 1/2 Bolt Holes				
FINISH:	# PCS:	REV:	A	



CROWN INDUSTRIAL
So. San Francisco, Ca
(650) 952-5150
www.crown-industrial.com

4

3

2

1



4

3

2

1

D

D

C

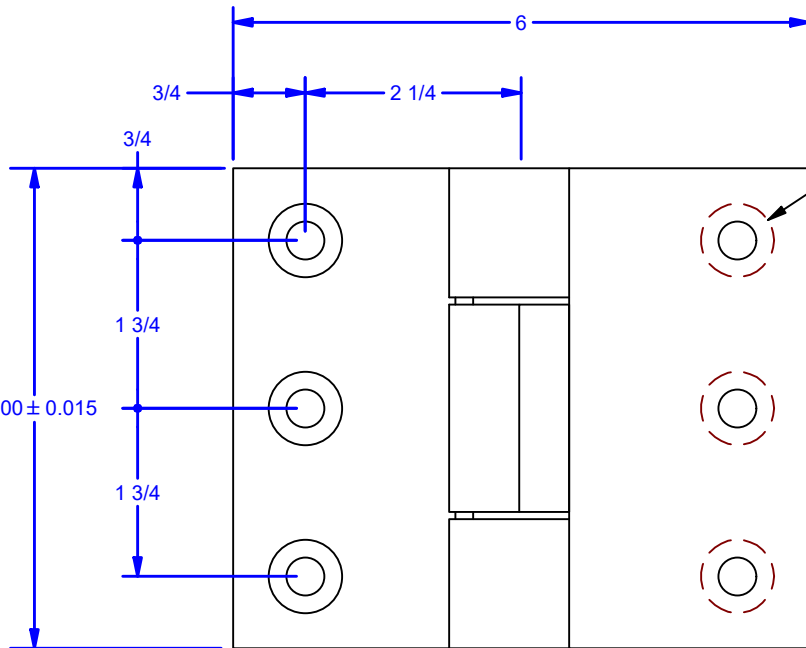
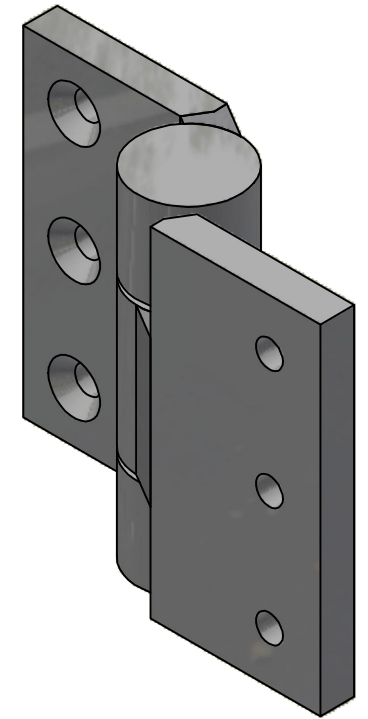
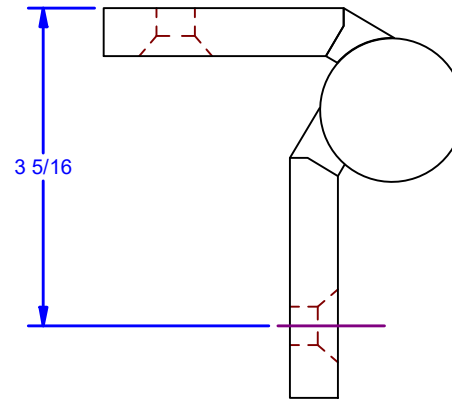
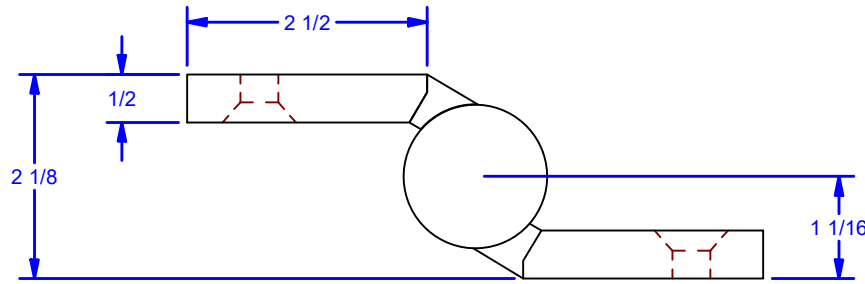
C

B

B

A

A



6X Ø25/64 THRU
 √ Ø49/64 X 82°
 For 3/8 Flat Head Machine Screw (82) Grade 5

- Thrust Capacity: 800 lbs
- Radial Capacity: 320 lbs
- Torque to Operate Door: 50 lb-in
- Minimum thread engagement into reinforcing member shall be equal to bolt diameter.

Optional Material: 304 Stainless Steel or 316 Stainless Steel

FINISHES:

Standard: Prime Ptd.

Optional:

- 304 Stainless Steel - 2B Mill Finish
- 316 Stainless Steel - 2B Mill Finish

DWG #: CBI8500
 DRAWN:BCM 1/28/2016
 SHEET #20
 File: 0000881.idw

ALL DIMENSIONS IN INCHES

THE INFORMATION CONTAINED IN THIS DRAWING IS THE SOLE PROPERTY OF CROWN INDUSTRIAL. ANY REPRODUCTION IN PART OR AS A WHOLE WITHOUT THE WRITTEN PERMISSION OF CROWN INDUSTRIAL IS PROHIBITED.	ID #:	0002212-04	STOCK PART #:	CBI8506xF1
	MATERIAL:		Hot Roll Steel	
DESCRIPTION: Precision High Capacity Half Mortise Hinge, 3/8 Flat Head Bolt Holes				
FINISH:	# PCS:	REV:	A	



CROWN INDUSTRIAL
 So. San Francisco, Ca
 (650) 952-5150
 www.crown-industrial.com

4

3

2

1



4

3

2

1

D

D

C

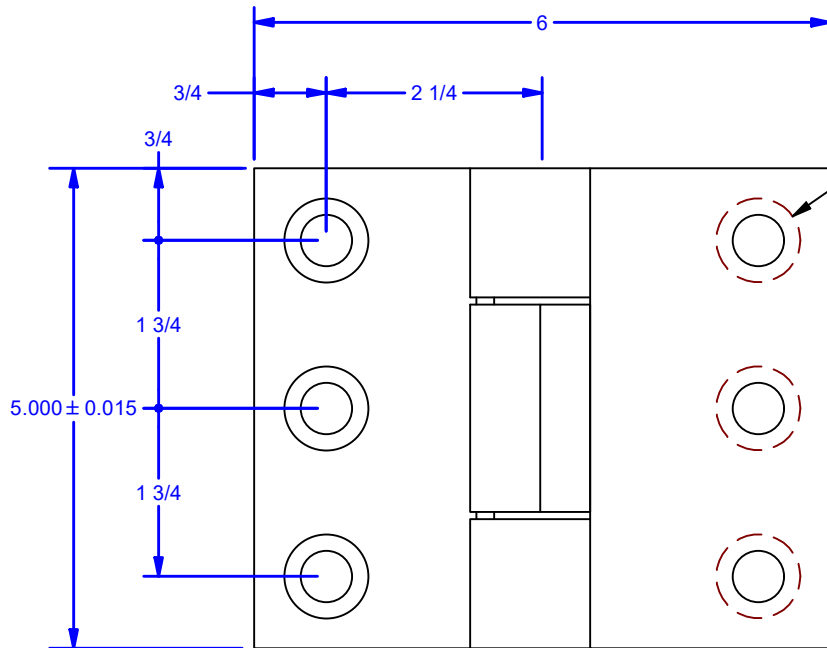
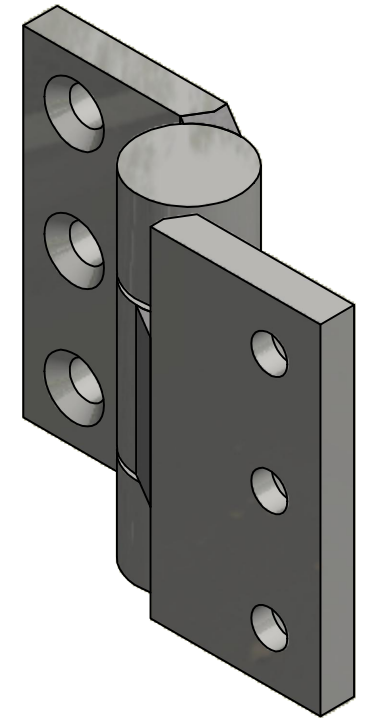
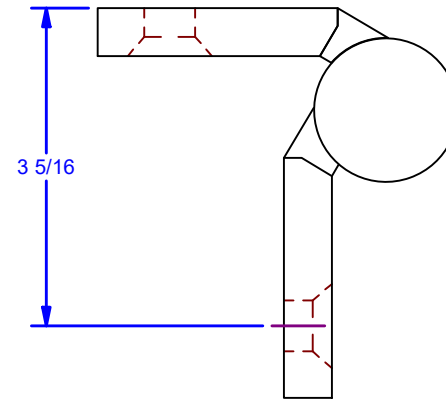
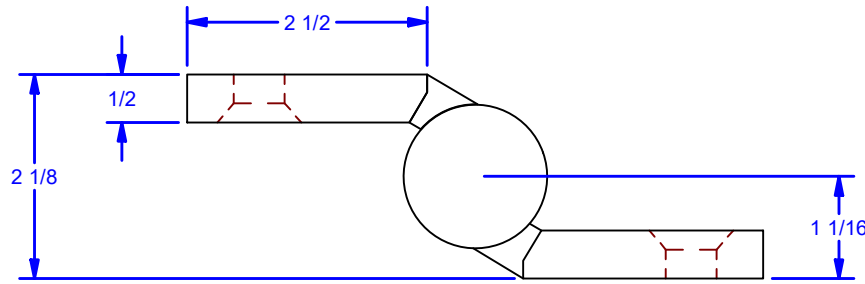
C

B

B

A

A



6X $\phi 17/32$ THRU
 $\sphericalangle \phi 7/8 \times 82^\circ$
 For 1/2 Flat Head Machine Screw (82) Grade 5

- Thrust Capacity: 800 lbs
- Radial Capacity: 320 lbs
- Torque to Operate Door: 50 lb-in
- Minimum thread engagement into reinforcing member shall be equal to bolt diameter.

Optional Material: 304 Stainless Steel or 316 Stainless Steel

FINISHES:

Standard: Prime Ptd.

Optional:

- 304 Stainless Steel - 2B Mill Finish
- 316 Stainless Steel - 2B Mill Finish

DWG #: CBI8500
 DRAWN:BCM 1/28/2016
 SHEET #21
 File: 0000881.idw

ALL DIMENSIONS IN INCHES

THE INFORMATION CONTAINED IN THIS DRAWING IS THE SOLE PROPERTY OF CROWN INDUSTRIAL. ANY REPRODUCTION IN PART OR AS A WHOLE WITHOUT THE WRITTEN PERMISSION OF CROWN INDUSTRIAL IS PROHIBITED.	ID #:	0002212-05	STOCK PART #:	CBI8506xF2
	MATERIAL:	Hot Roll Steel		
DESCRIPTION: Precision High Capacity Half Mortise Hinge, 1/2 Flat Head Bolt Holes				
FINISH:	# PCS:	REV:	A	



CROWN INDUSTRIAL
 So. San Francisco, Ca
 (650) 952-5150
 www.crown-industrial.com

4

3

2

1

A

4

3

2

1

D

D

C

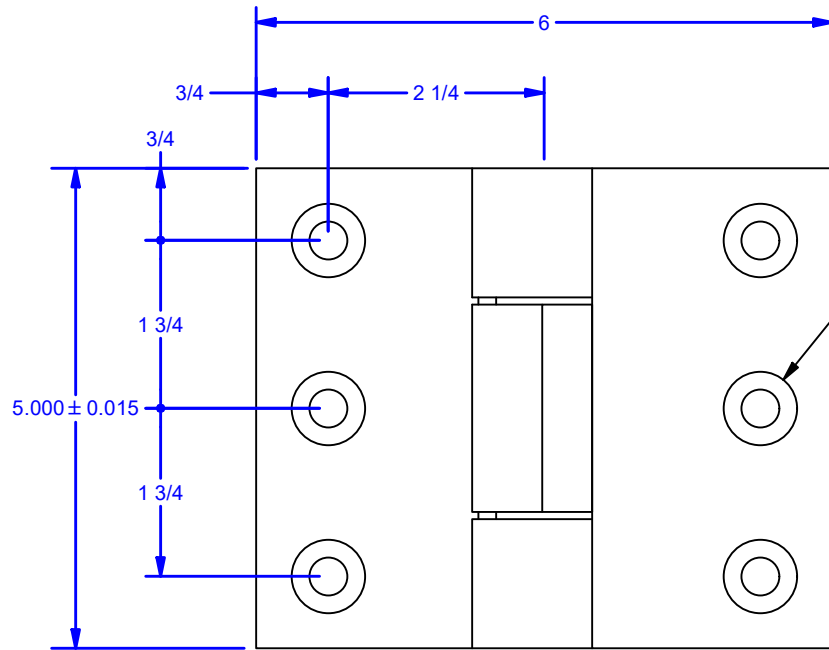
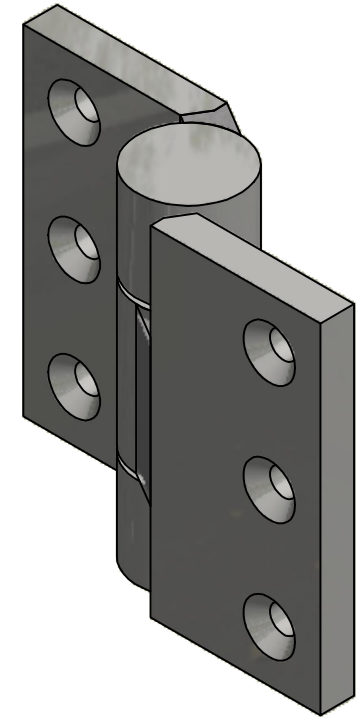
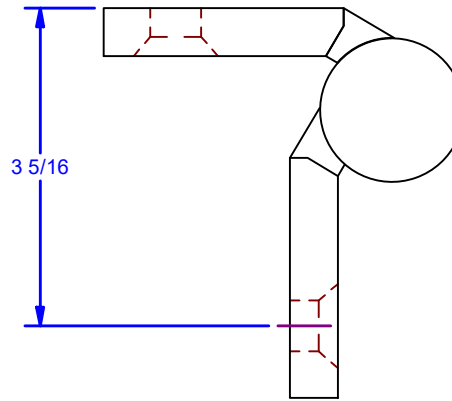
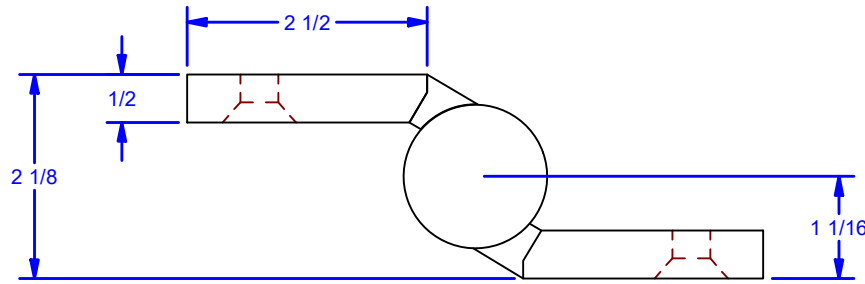
C

B

B

A

A



3X Ø25/64 THRU
 ✓ Ø49/64 X 82°
 For 3/8 Flat Head Machine Screw (82) Grade 5

- Thrust Capacity: 800 lbs
- Radial Capacity: 320 lbs
- Torque to Operate Door: 50 lb-in
- Minimum thread engagement into reinforcing member shall be equal to bolt diameter.

Optional Material: 304 Stainless Steel or 316 Stainless Steel

FINISHES:

Standard: Prime Ptd.

Optional:

- 304 Stainless Steel - 2B Mill Finish
- 316 Stainless Steel - 2B Mill Finish

DWG #: CBI8500
 DRAWN:BCM 1/28/2016
 SHEET #22

File: 0000881.idw

ALL DIMENSIONS IN INCHES

THE INFORMATION CONTAINED IN THIS DRAWING IS THE SOLE PROPERTY OF CROWN INDUSTRIAL. ANY REPRODUCTION IN PART OR AS A WHOLE WITHOUT THE WRITTEN PERMISSION OF CROWN INDUSTRIAL IS PROHIBITED.	ID #:	0002212-06	STOCK PART #:	CBI8506xB1
	MATERIAL:	Hot Roll Steel		
DESCRIPTION: Prec. High Capacity Half Mortise Hinge, 3/8 Flat Head Bolt Holes Back				
FINISH:	# PCS:	REV:	A	



CROWN INDUSTRIAL

So. San Francisco, Ca
 (650) 952-5150

www.crown-industrial.com

4

3

2

1



4

3

2

1

D

D

C

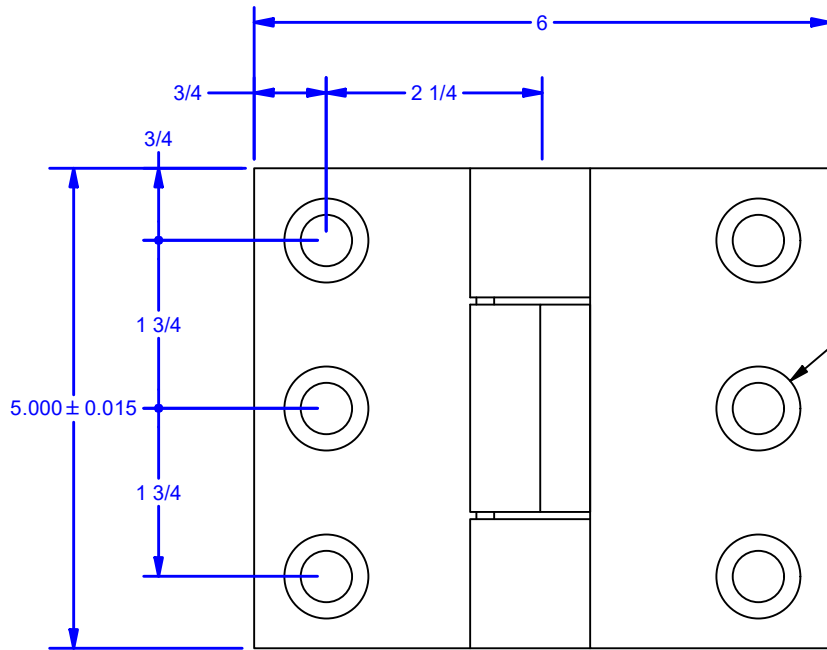
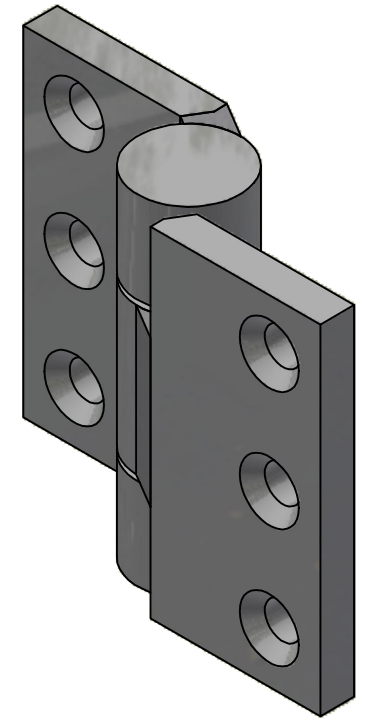
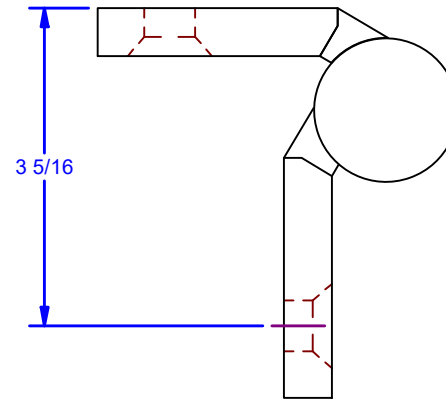
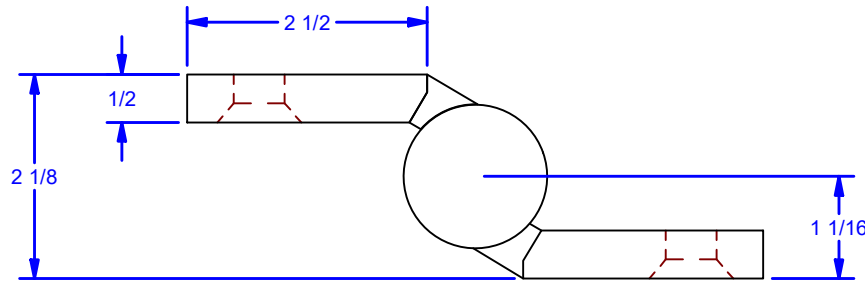
C

B

B

A

A



3X Ø17/32 THRU
 ✓ Ø7/8 X 82°
 For 1/2 Flat Head Machine Screw (82) Grade 5

- Thrust Capacity: 800 lbs
- Radial Capacity: 320 lbs
- Torque to Operate Door: 50 lb-in
- Minimum thread engagement into reinforcing member shall be equal to bolt diameter.

Optional Material: 304 Stainless Steel or 316 Stainless Steel

FINISHES:

Standard: Prime Ptd.

Optional:

- 304 Stainless Steel - 2B Mill Finish
- 316 Stainless Steel - 2B Mill Finish

DWG #: CBI8500
 DRAWN:BCM 1/28/2016
 SHEET #23

File: 0000881.idw

ALL DIMENSIONS IN INCHES

THE INFORMATION CONTAINED IN THIS DRAWING IS THE SOLE PROPERTY OF CROWN INDUSTRIAL. ANY REPRODUCTION IN PART OR AS A WHOLE WITHOUT THE WRITTEN PERMISSION OF CROWN INDUSTRIAL IS PROHIBITED.	ID #:	0002212-07	STOCK PART #:	CBI8506xB2
	MATERIAL:	Hot Roll Steel		
DESCRIPTION: Prec. High Capacity Half Mortise Hinge, 1/2 Flat Head Bolt Holes Back				
FINISH:	# PCS:	REV:	A	



CROWN INDUSTRIAL

So. San Francisco, Ca
 (650) 952-5150

www.crown-industrial.com

4

3

2

1

4

3

2

1

D

D

C

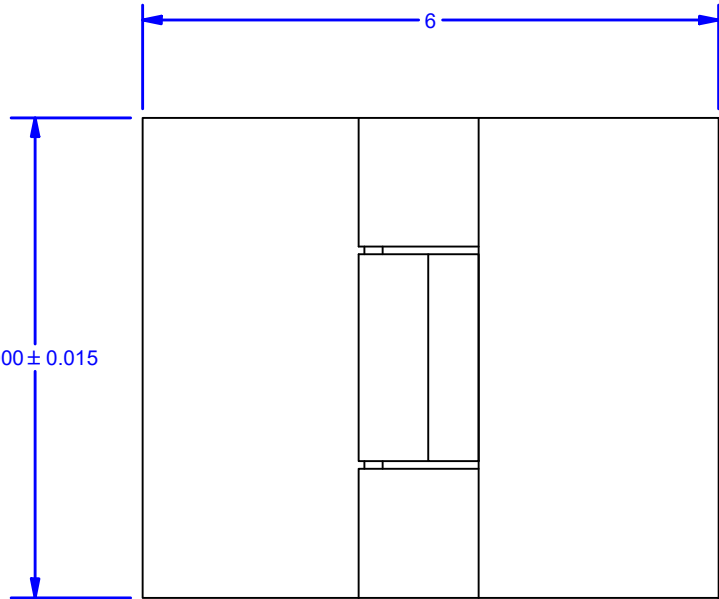
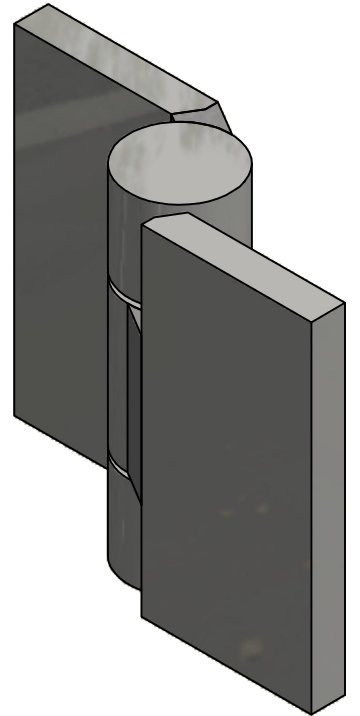
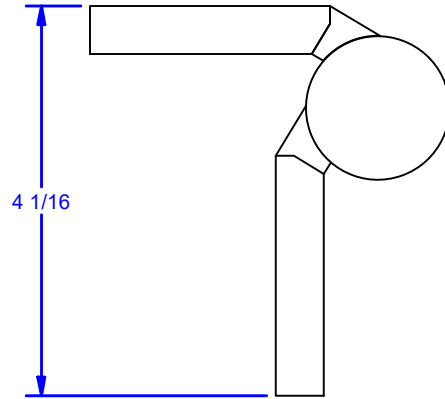
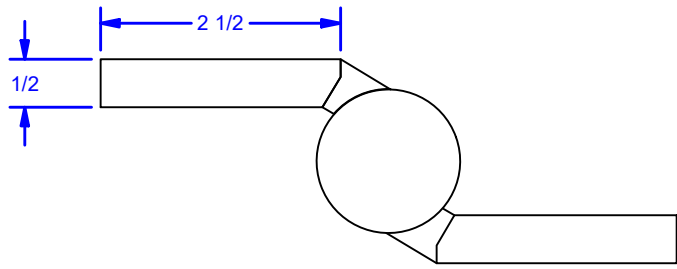
C

B

B

A

A



- Thrust Capacity: 2,000 lbs
- Radial Capacity: 800 lbs
- Torque to Operate Door: 5 lb-in
- For weld on applications: Minimum fillet weld size of 1/4" on (3) sides of each hinge leaf. Weld interpass temperature should not exceed 225 Degrees F

Optional Material: 304 Stainless Steel or 316 Stainless Steel

FINISHES:

Standard: Prime Ptd.

Optional:

- 304 Stainless Steel - 2B Mill Finish
- 316 Stainless Steel - 2B Mill Finish

DWG #: CBI8500
 DRAWN:BCM 1/28/2016
 SHEET #24

File: 0000881.idw

ALL DIMENSIONS IN INCHES

THE INFORMATION CONTAINED IN THIS DRAWING IS THE SOLE PROPERTY OF CROWN INDUSTRIAL. ANY REPRODUCTION IN PART OR AS A WHOLE WITHOUT THE WRITTEN PERMISSION OF CROWN INDUSTRIAL IS PROHIBITED.	ID #:	0002212-08	STOCK PART #:	CBI8511
	MATERIAL:	Hot Roll Steel		
DESCRIPTION: Precision High Capacity Half Mortise Hinge, No Bolt Holes				
FINISH:	# PCS:	REV:	A	



CROWN INDUSTRIAL
 So. San Francisco, Ca
 (650) 952-5150
 www.crown-industrial.com

4

3

2

1



4

3

2

1

D

D

C

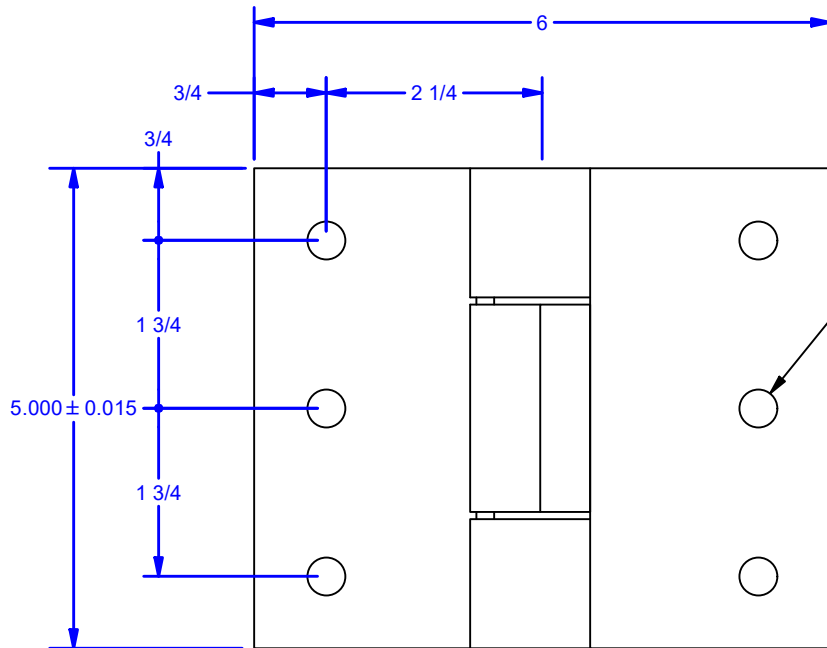
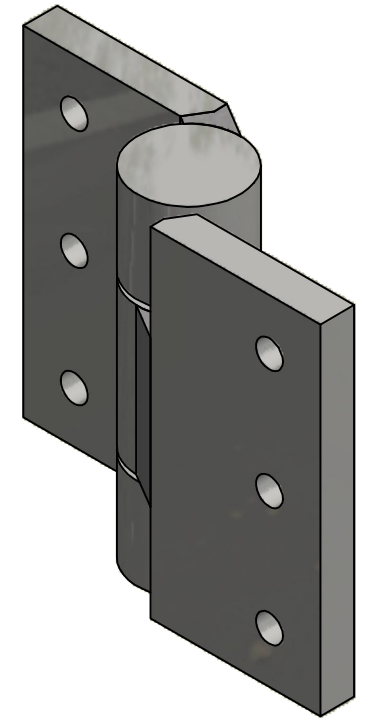
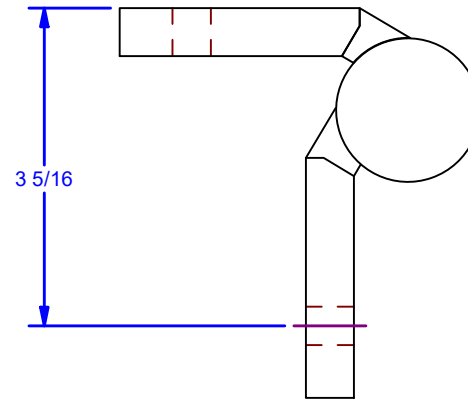
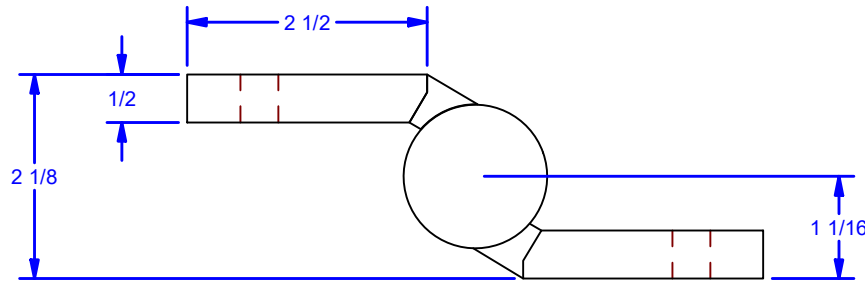
C

B

B

A

A



6X Ø25/64 THRU
For 3/8 Hex Head Bolt Grade 5

- Thrust Capacity: 2,000 lbs
- Radial Capacity: 800 lbs
- Torque to Operate Door: 5 lb-in
- Minimum thread engagement into reinforcing member shall be equal to bolt diameter.

Optional Material: 304 Stainless Steel or 316 Stainless Steel

FINISHES:

Standard: Prime Ptd.

Optional:

- 304 Stainless Steel - 2B Mill Finish
- 316 Stainless Steel - 2B Mill Finish

DWG #: CBI8500
DRAWN:BCM 1/28/2016
SHEET #25

File: 0000881.idw

ALL DIMENSIONS IN INCHES

THE INFORMATION CONTAINED IN THIS DRAWING IS THE SOLE PROPERTY OF CROWN INDUSTRIAL. ANY REPRODUCTION IN PART OR AS A WHOLE WITHOUT THE WRITTEN PERMISSION OF CROWN INDUSTRIAL IS PROHIBITED.	ID #:	0002212-09	STOCK PART #:	CBI8511x1
	MATERIAL:	Hot Roll Steel		
DESCRIPTION: Precision High Capacity Half Mortise Hinge, 3/8 Bolt Holes				
FINISH:	# PCS:	REV:	A	



CROWN INDUSTRIAL

So. San Francisco, Ca
(650) 952-5150

www.crown-industrial.com

4

3

2

1



4

3

2

1

D

D

C

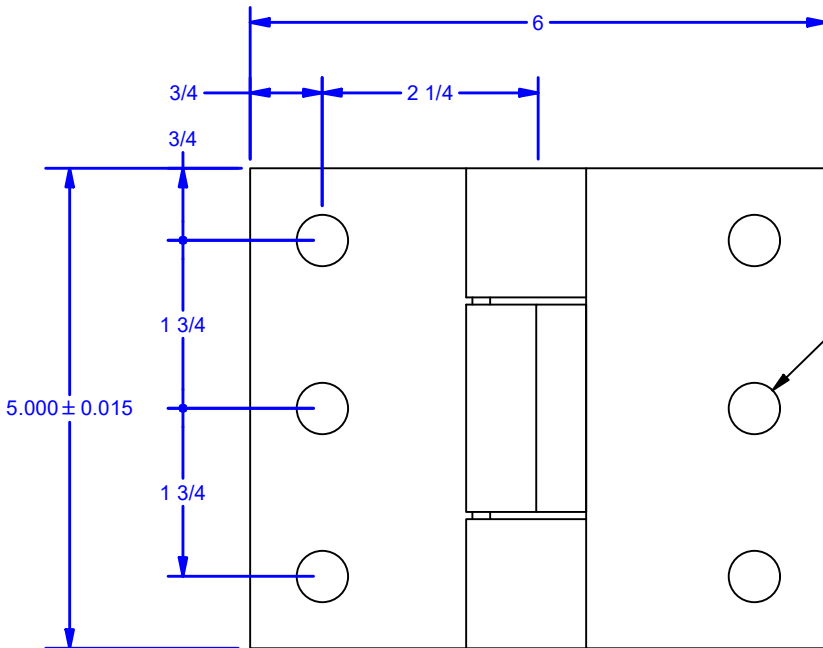
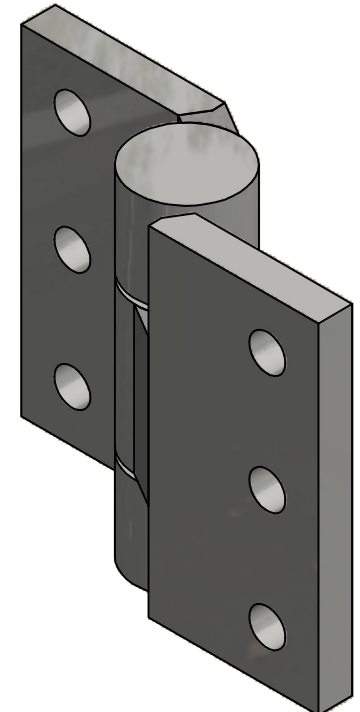
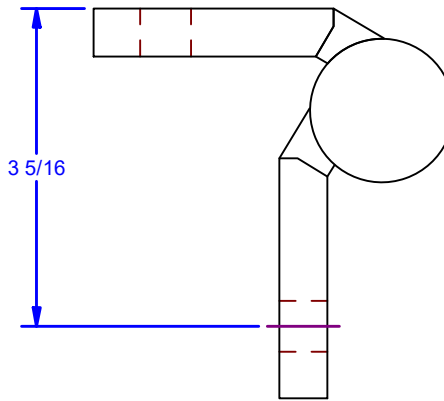
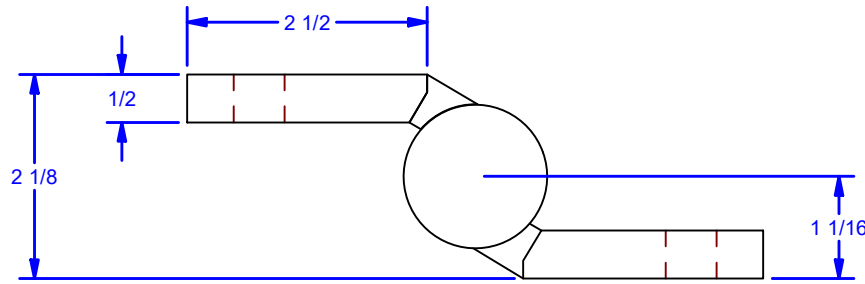
C

B

B

A

A



6X Ø17/32 THRU
For 1/2 Hex Head Bolt Grade 5

- Thrust Capacity: 2,000 lbs
- Radial Capacity: 800 lbs
- Torque to Operate Door: 5 lb-in
- Minimum thread engagement into reinforcing member shall be equal to bolt diameter.

Optional Material: 304 Stainless Steel or 316 Stainless Steel

FINISHES:

Standard: Prime Ptd.

Optional:

- 304 Stainless Steel - 2B Mill Finish
- 316 Stainless Steel - 2B Mill Finish

ALL DIMENSIONS IN INCHES

THE INFORMATION CONTAINED IN THIS DRAWING IS THE SOLE PROPERTY OF CROWN INDUSTRIAL. ANY REPRODUCTION IN PART OR AS A WHOLE WITHOUT THE WRITTEN PERMISSION OF CROWN INDUSTRIAL IS PROHIBITED.	ID #:	0002212-10	STOCK PART #:	CBI8511x2
	MATERIAL:	Hot Roll Steel		
DESCRIPTION: Precision High Capacity Half Mortise Hinge, 1/2 Bolt Holes				
FINISH:	# PCS:	REV:	A	



CROWN INDUSTRIAL

So. San Francisco, Ca
(650) 952-5150

www.crown-industrial.com

DWG #: CBI8500
DRAWN:BCM 1/28/2016
SHEET #26

File: 0000881.idw

4

3

2

1

A

4

3

2

1

D

D

C

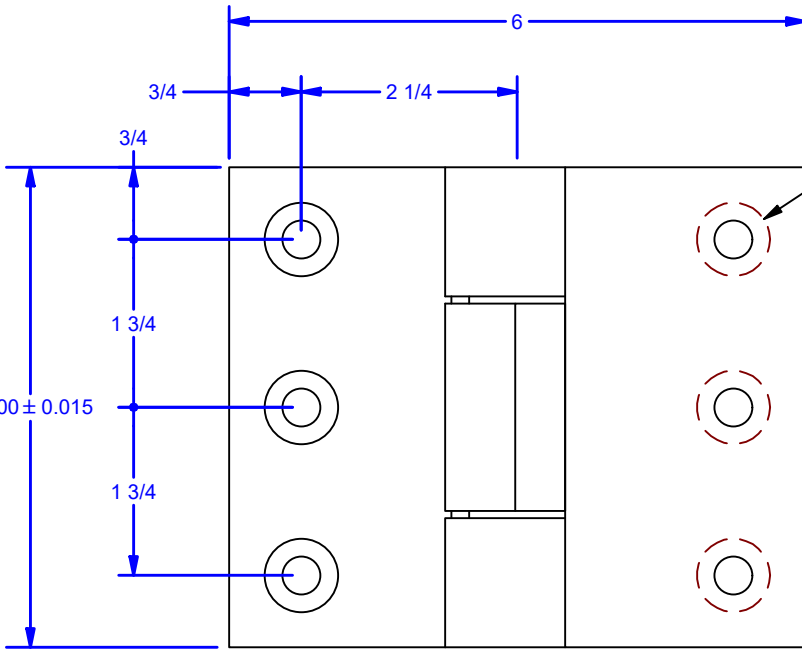
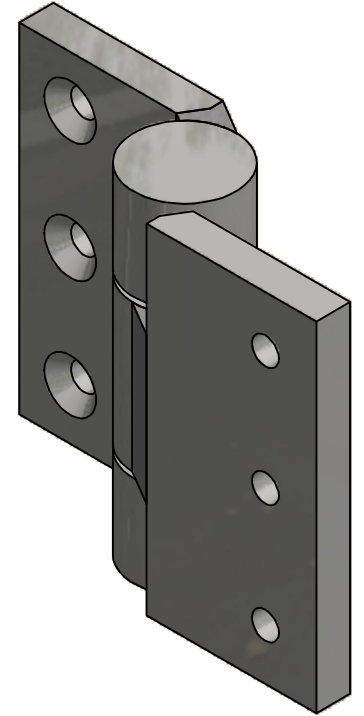
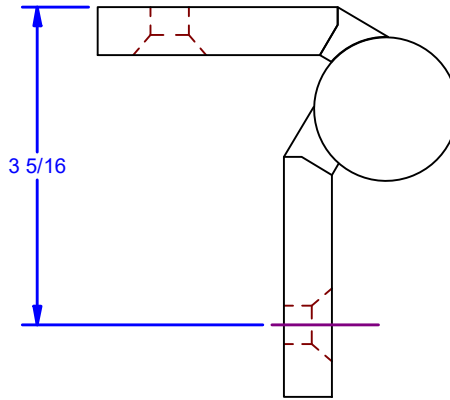
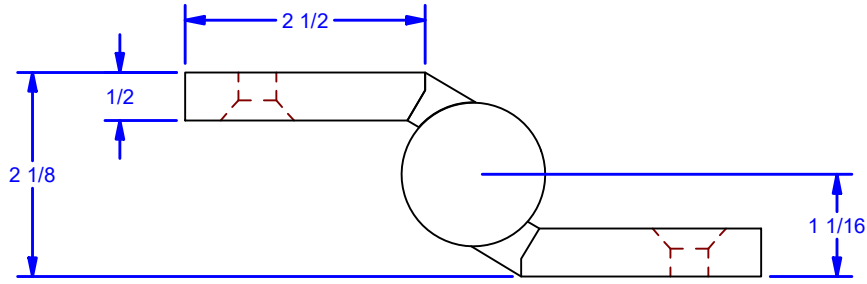
C

B

B

A

A



6X Ø25/64 THRU
 √ Ø49/64 X 82°
 For 3/8 Flat Head Machine Screw (82) Grade 5

- Thrust Capacity: 2,000 lbs
- Radial Capacity: 800 lbs
- Torque to Operate Door: 5 lb-in
- Minimum thread engagement into reinforcing member shall be equal to bolt diameter.

Optional Material: 304 Stainless Steel or 316 Stainless Steel

FINISHES:

Standard: Prime Ptd.

Optional:

- 304 Stainless Steel - 2B Mill Finish
- 316 Stainless Steel - 2B Mill Finish

DWG #: CBI8500
 DRAWN:BCM 1/28/2016
 SHEET #27

File: 0000881.idw

ALL DIMENSIONS IN INCHES

THE INFORMATION CONTAINED IN THIS DRAWING IS THE SOLE PROPERTY OF CROWN INDUSTRIAL. ANY REPRODUCTION IN PART OR AS A WHOLE WITHOUT THE WRITTEN PERMISSION OF CROWN INDUSTRIAL IS PROHIBITED.	ID #:	0002212-11	STOCK PART #:	CBI8511xF1
	MATERIAL:		Hot Roll Steel	
DESCRIPTION: Precision High Capacity Half Mortise Hinge, 3/8 Flat Head Bolt Holes				
FINISH:	# PCS:	REV:	A	



CROWN INDUSTRIAL

So. San Francisco, Ca
 (650) 952-5150

www.crown-industrial.com

4

3

2

1



4

3

2

1

D

D

C

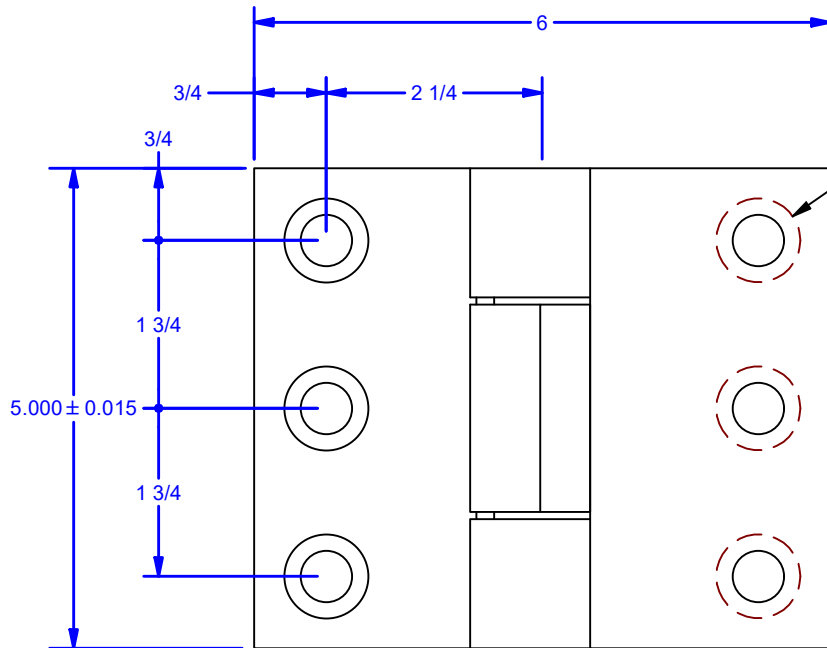
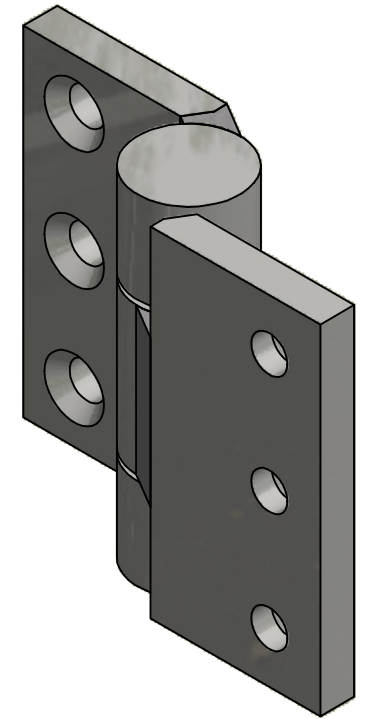
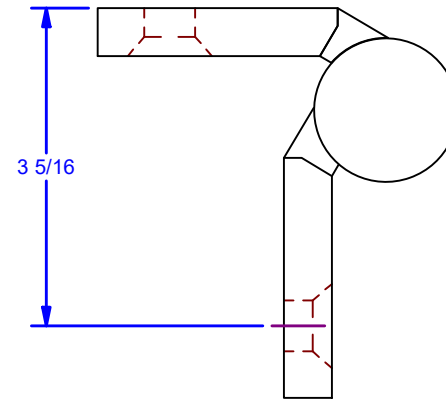
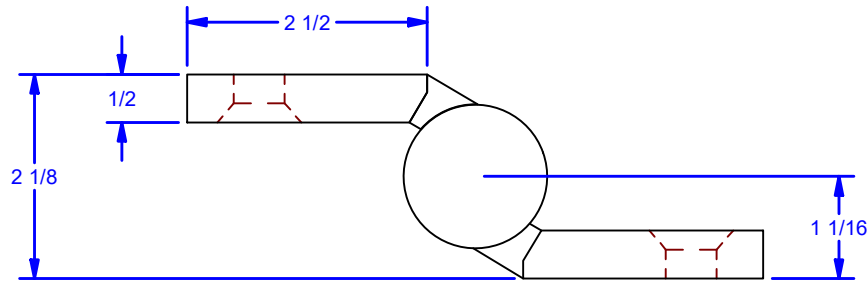
C

B

B

A

A



6X $\phi 17/32$ THRU
 $\sphericalangle \phi 7/8 \times 82^\circ$
 For 1/2 Flat Head Machine Screw (82) Grade 5

- Thrust Capacity: 2,000 lbs
- Radial Capacity: 800 lbs
- Torque to Operate Door: 5 lb-in
- Minimum thread engagement into reinforcing member shall be equal to bolt diameter.

Optional Material: 304 Stainless Steel or 316 Stainless Steel

FINISHES:

Standard: Prime Ptd.

Optional:

- 304 Stainless Steel - 2B Mill Finish
- 316 Stainless Steel - 2B Mill Finish

DWG #: CBI8500
 DRAWN:BCM 1/28/2016
 SHEET #28
 File: 0000881.idw

ALL DIMENSIONS IN INCHES

THE INFORMATION CONTAINED IN THIS DRAWING IS THE SOLE PROPERTY OF CROWN INDUSTRIAL. ANY REPRODUCTION IN PART OR AS A WHOLE WITHOUT THE WRITTEN PERMISSION OF CROWN INDUSTRIAL IS PROHIBITED.	ID #:	0002212-12	STOCK PART #:	CBI8511xF2
	MATERIAL:	Hot Roll Steel		
DESCRIPTION: Precision High Capacity Half Mortise Hinge, 1/2 Flat Head Bolt Holes				
FINISH:	# PCS:	REV:	A	



CROWN INDUSTRIAL
 So. San Francisco, Ca
 (650) 952-5150
 www.crown-industrial.com

4

3

2

1

A

4

3

2

1

D

D

C

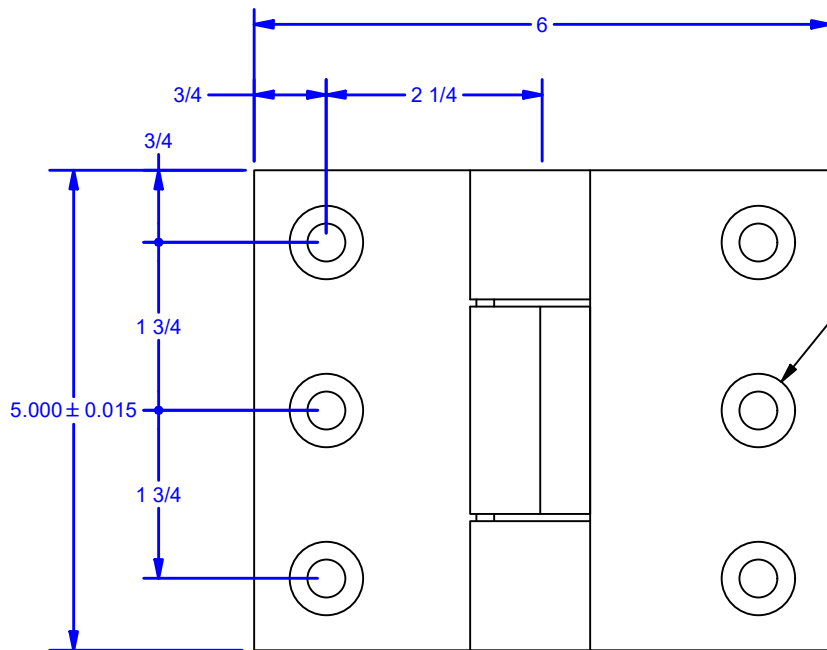
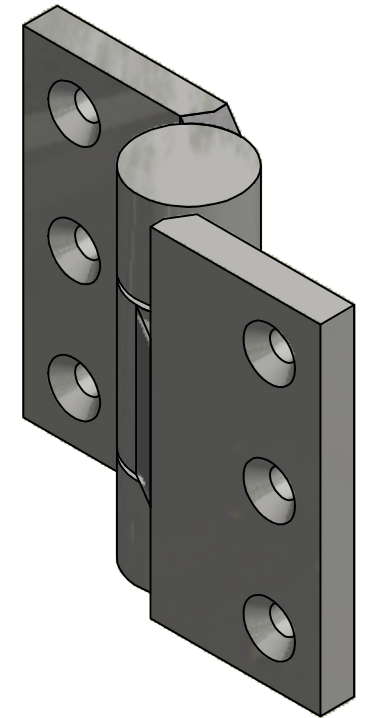
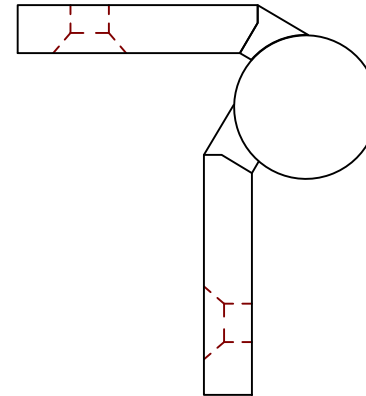
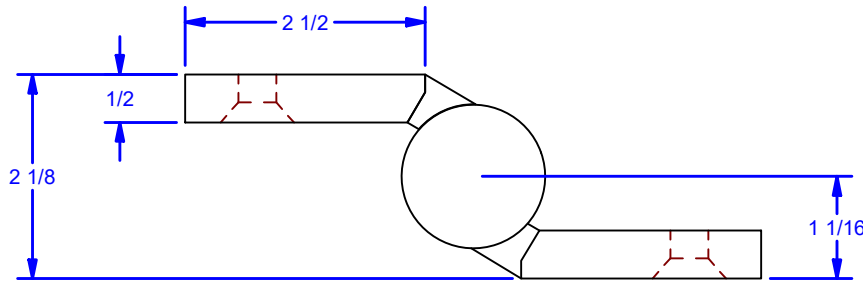
C

B

B

A

A



3X Ø25/64 THRU
 ✓ Ø49/64 X 82°
 For 3/8 Flat Head Machine Screw (82) Grade 5

- Thrust Capacity: 2,000 lbs
- Radial Capacity: 800 lbs
- Torque to Operate Door: 5 lb-in
- Minimum thread engagement into reinforcing member shall be equal to bolt diameter.

Optional Material: 304 Stainless Steel or 316 Stainless Steel

FINISHES:

Standard: Prime Ptd.

Optional:

- 304 Stainless Steel - 2B Mill Finish
- 316 Stainless Steel - 2B Mill Finish

DWG #: CBI8500
 DRAWN:BCM 1/28/2016
 SHEET #29

File: 0000881.idw

ALL DIMENSIONS IN INCHES

THE INFORMATION CONTAINED IN THIS DRAWING IS THE SOLE PROPERTY OF CROWN INDUSTRIAL. ANY REPRODUCTION IN PART OR AS A WHOLE WITHOUT THE WRITTEN PERMISSION OF CROWN INDUSTRIAL IS PROHIBITED.	ID #:	0002212-13	STOCK PART #:	CBI8511xB1
	MATERIAL:	Hot Roll Steel		
DESCRIPTION: Prec. High Capacity Half Mortise Hinge, 3/8 Flat Head Bolt Holes Back				
FINISH:	# PCS:	REV:	A	



CROWN INDUSTRIAL

So. San Francisco, Ca
 (650) 952-5150

www.crown-industrial.com

4

3

2

1

A

4

3

2

1

D

D

C

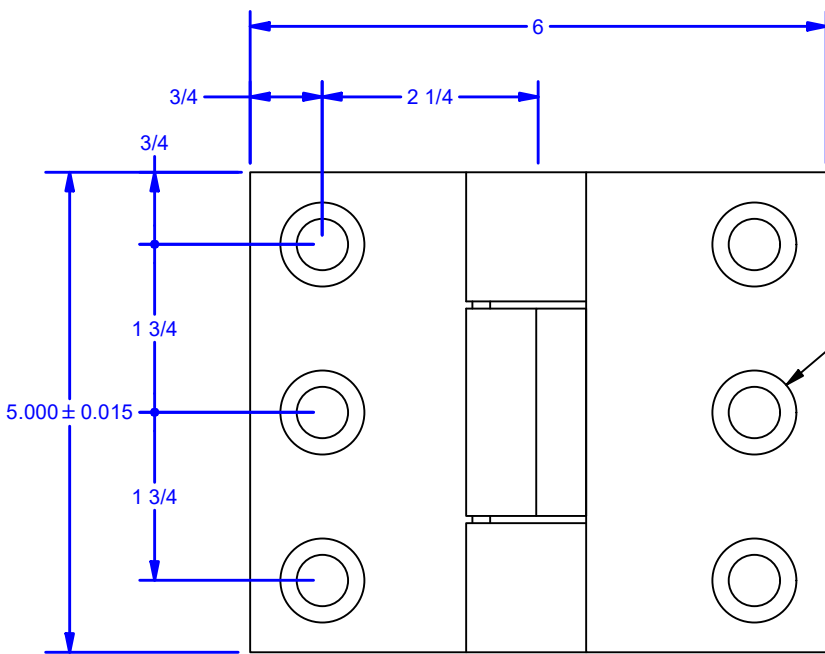
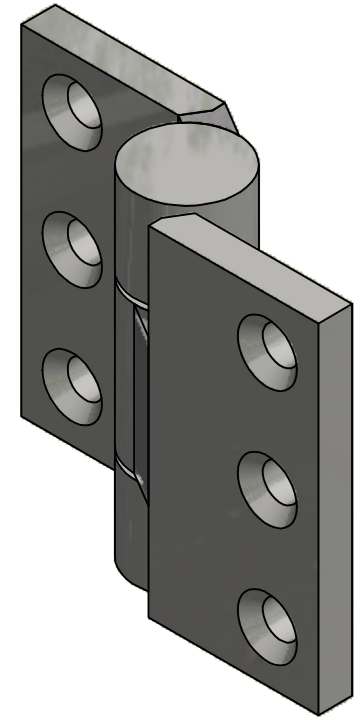
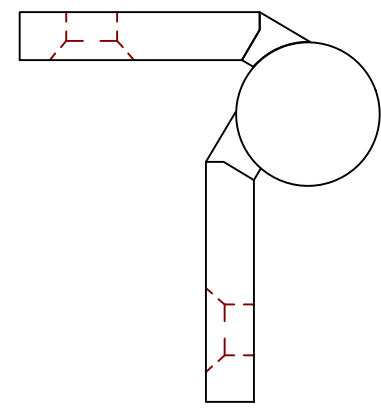
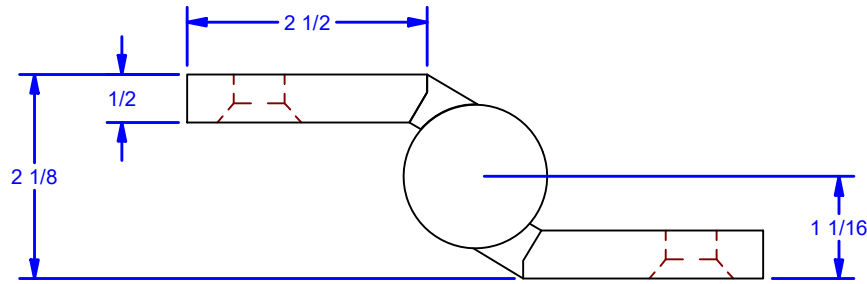
C

B

B

A

A



3X Ø17/32 THRU
 ✓ Ø7/8 X 82°
 For 1/2 Flat Head Machine Screw (82) Grade 5

- Thrust Capacity: 2,000 lbs
- Radial Capacity: 800 lbs
- Torque to Operate Door: 5 lb-in
- Minimum thread engagement into reinforcing member shall be equal to bolt diameter.

Optional Material: 304 Stainless Steel or 316 Stainless Steel

FINISHES:

Standard: Prime Ptd.

Optional:

- 304 Stainless Steel - 2B Mill Finish
- 316 Stainless Steel - 2B Mill Finish

DWG #: CBI8500
 DRAWN:BCM 1/28/2016
 SHEET #30
 File: 0000881.idw

ALL DIMENSIONS IN INCHES

THE INFORMATION CONTAINED IN THIS DRAWING IS THE SOLE PROPERTY OF CROWN INDUSTRIAL. ANY REPRODUCTION IN PART OR AS A WHOLE WITHOUT THE WRITTEN PERMISSION OF CROWN INDUSTRIAL IS PROHIBITED.	ID #:	0002212-14	STOCK PART #:	CBI8511xB2
	MATERIAL:	Hot Roll Steel		
DESCRIPTION: Prec. High Capacity Half Mortise Hinge, 1/2 Flat Head Bolt Holes Back				
FINISH:	# PCS:	REV:	A	



CROWN INDUSTRIAL
 So. San Francisco, Ca
 (650) 952-5150
 www.crown-industrial.com

4

3

2

1