

4

3

2

1

D

D

C

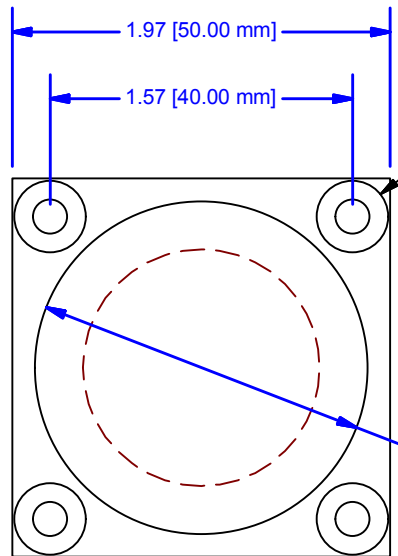
C

B

B

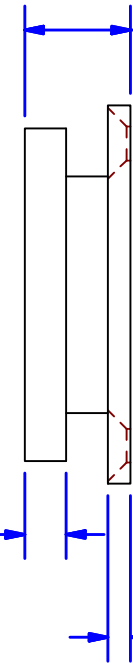
A

A



4X $\varnothing 11/64$ Countersunk Holes
For M4 or #8 Flat Head Machine Screw

$\varnothing 1.73$ [44.00 mm]



.55 [14.00 mm]

.22 [5.50 mm]

.12 [3.00 mm]

ALL DIMENSIONS IN INCHES

THE INFORMATION CONTAINED IN THIS DRAWING IS THE SOLE PROPERTY OF CROWN INDUSTRIAL. ANY REPRODUCTION IN PART OR AS A WHOLE WITHOUT THE WRITTEN PERMISSION OF CROWN INDUSTRIAL IS PROHIBITED.	ID #:	0002154-01	STOCK PART #:	CP1
	MATERIAL:	Steel, Mild		
DESCRIPTION: Counter Plate				
FINISH:	Clear Zinc	# PCS:	1	REV:



CROWN INDUSTRIAL

So. San Francisco, Ca
(650) 952-5150

www.crown-industrial.com

DWG #: 0002149
DRAWN:BCM 12/1/2015
SHEET #5

File: 0002149.idw

4

3

2

1

4

3

2

1

D

D

C

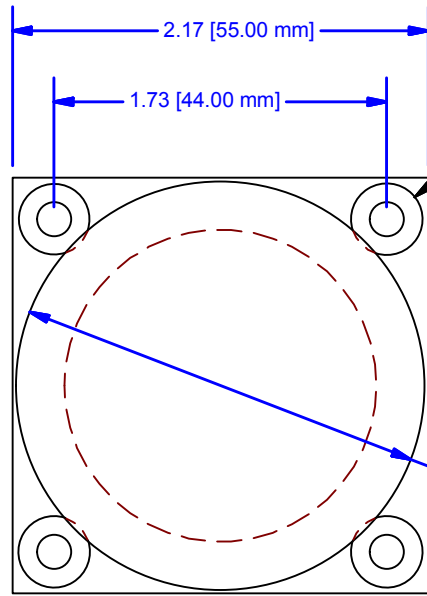
C

B

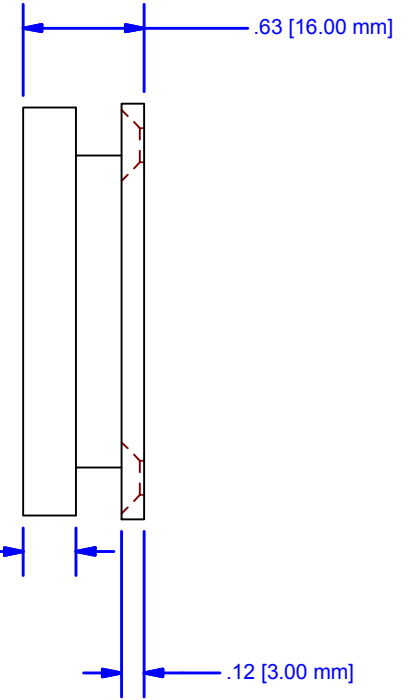
B

A

A



4X $\phi 11/64$ Countersunk Holes
For M4 or #8 Flat Head Machine Screw



ALL DIMENSIONS IN INCHES

THE INFORMATION CONTAINED IN THIS DRAWING IS THE SOLE PROPERTY OF CROWN INDUSTRIAL. ANY REPRODUCTION IN PART OR AS A WHOLE WITHOUT THE WRITTEN PERMISSION OF CROWN INDUSTRIAL IS PROHIBITED.	ID #:	0002154-02	STOCK PART #:	CP2
	MATERIAL:	Steel, Mild		
DESCRIPTION: Counter Plate				
FINISH:	Clear Zinc	# PCS:	1	REV:



CROWN INDUSTRIAL

So. San Francisco, Ca
(650) 952-5150

www.crown-industrial.com

DWG #: 0002149
DRAWN:BCM 12/1/2015
SHEET #6

File: 0002149.idw

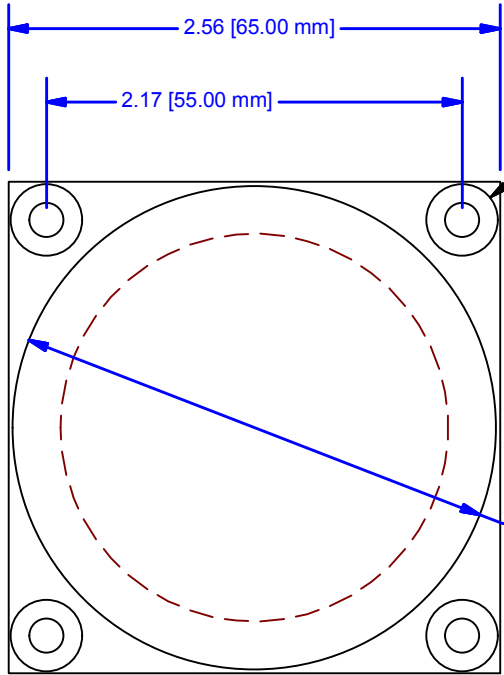
4

3

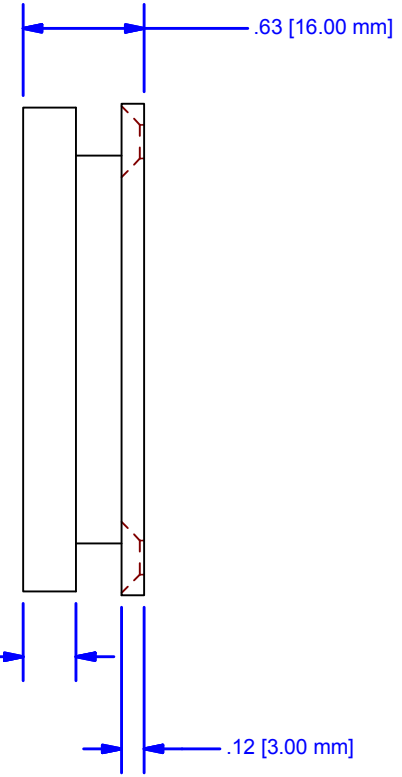
2

1

A



4X $\text{\O}11/64$ Countersunk Holes
For M4 or #8 Flat Head Machine Screw



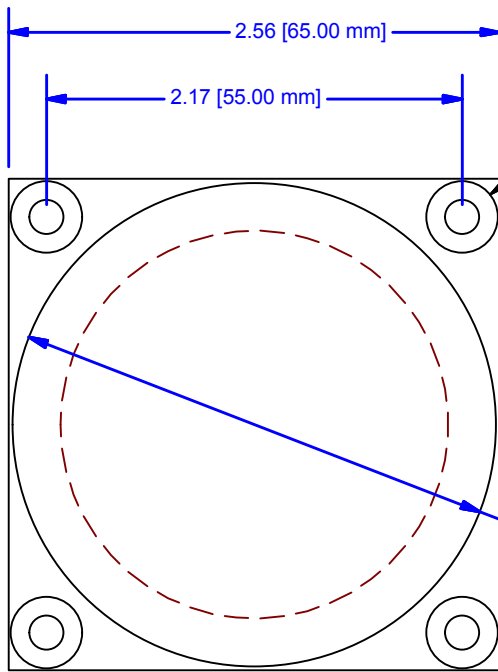
ALL DIMENSIONS IN INCHES

THE INFORMATION CONTAINED IN THIS DRAWING IS THE SOLE PROPERTY OF CROWN INDUSTRIAL. ANY REPRODUCTION IN PART OR AS A WHOLE WITHOUT THE WRITTEN PERMISSION OF CROWN INDUSTRIAL IS PROHIBITED.	ID #:	0002154-03	STOCK PART #:	CP3
	MATERIAL:	Steel, Mild		
DESCRIPTION: Counter Plate				
FINISH:	Clear Zinc	# PCS:	1	REV:



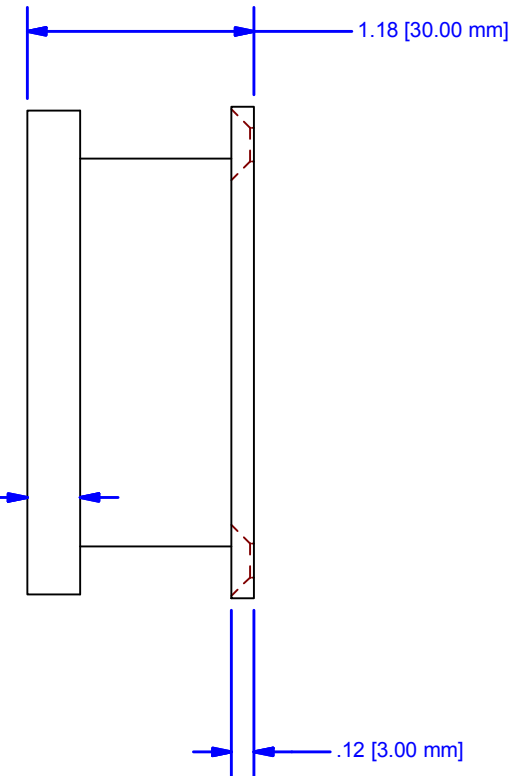
CROWN INDUSTRIAL
So. San Francisco, Ca
(650) 952-5150
www.crown-industrial.com

DWG #: 0002149
DRAWN:BCM 12/1/2015
SHEET #7
File: 0002149.idw



4X $\text{Ø}11/64$ Countersunk Holes
For M4 or #8 Flat Head Machine Screw

$\text{Ø}2.52$ [64.00 mm]



.28 [7.00 mm]

.12 [3.00 mm]

ALL DIMENSIONS IN INCHES

THE INFORMATION CONTAINED IN THIS DRAWING IS THE SOLE PROPERTY OF CROWN INDUSTRIAL. ANY REPRODUCTION IN PART OR AS A WHOLE WITHOUT THE WRITTEN PERMISSION OF CROWN INDUSTRIAL IS PROHIBITED.	ID #:	0002154-04	STOCK PART #:	CP4
	MATERIAL:	Steel, Mild		
DESCRIPTION: Counter Plate				
FINISH:	Clear Zinc	# PCS:	1	REV:



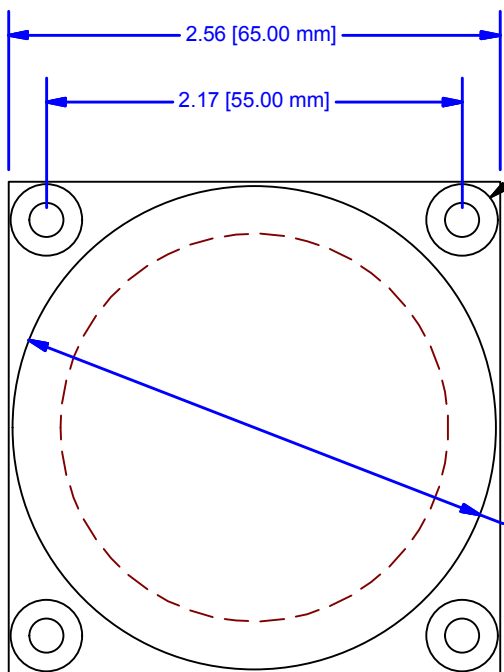
CROWN INDUSTRIAL

So. San Francisco, Ca
(650) 952-5150

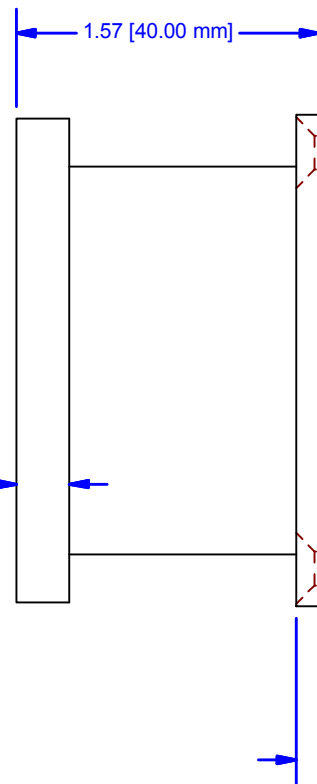
www.crown-industrial.com

DWG #: 0002149
DRAWN:BCM 12/1/2015
SHEET #8

File: 0002149.idw



4X $\text{\O}11/64$ Countersunk Holes
For M4 or #8 Flat Head Machine Screw



ALL DIMENSIONS IN INCHES

THE INFORMATION CONTAINED IN THIS DRAWING IS THE SOLE PROPERTY OF CROWN INDUSTRIAL. ANY REPRODUCTION IN PART OR AS A WHOLE WITHOUT THE WRITTEN PERMISSION OF CROWN INDUSTRIAL IS PROHIBITED.	ID #:	0002154-05	STOCK PART #:	CP5
	MATERIAL:	Steel, Mild		
DESCRIPTION: Counter Plate				
FINISH:	Clear Zinc	# PCS:	1	REV:



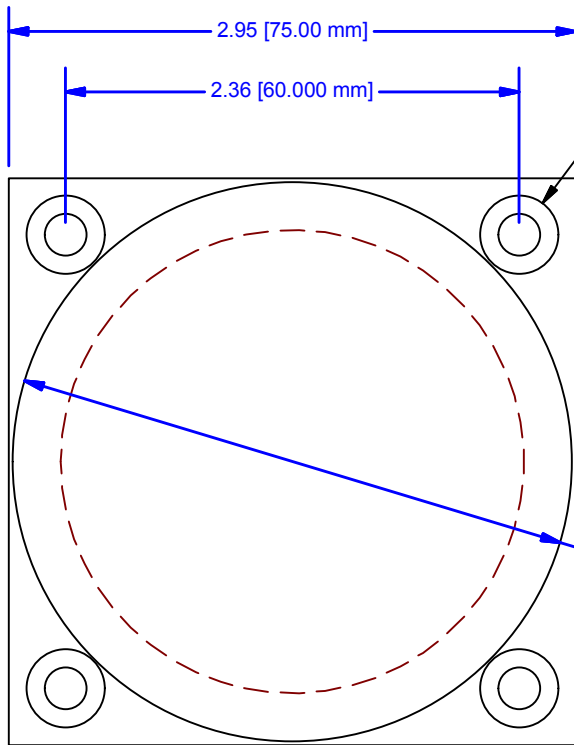
CROWN INDUSTRIAL

So. San Francisco, Ca
(650) 952-5150

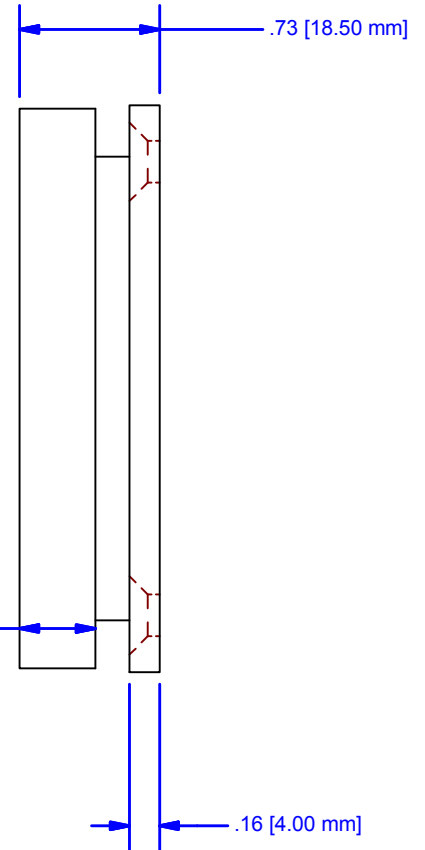
www.crown-industrial.com

DWG #: 0002149
DRAWN:BCM 12/1/2015
SHEET #9

File: 0002149.idw



4X $\text{Ø}7/32$ Countersunk Holes
For M5 or #10 Flat Head Machine Screw



$\text{Ø}2.91$ [74.00 mm]

.39 [10.00 mm]

.16 [4.00 mm]

ALL DIMENSIONS IN INCHES

THE INFORMATION CONTAINED IN THIS DRAWING IS THE SOLE PROPERTY OF CROWN INDUSTRIAL. ANY REPRODUCTION IN PART OR AS A WHOLE WITHOUT THE WRITTEN PERMISSION OF CROWN INDUSTRIAL IS PROHIBITED.	ID #:	0002154-06	STOCK PART #:	CP6
	MATERIAL:	Steel, Mild		
DESCRIPTION: Counter Plate				
FINISH:	Clear Zinc	# PCS:	1	REV:



CROWN INDUSTRIAL

So. San Francisco, Ca
(650) 952-5150

www.crown-industrial.com

DWG #: 0002149
DRAWN:BCM 12/1/2015
SHEET #10

File: 0002149.idw