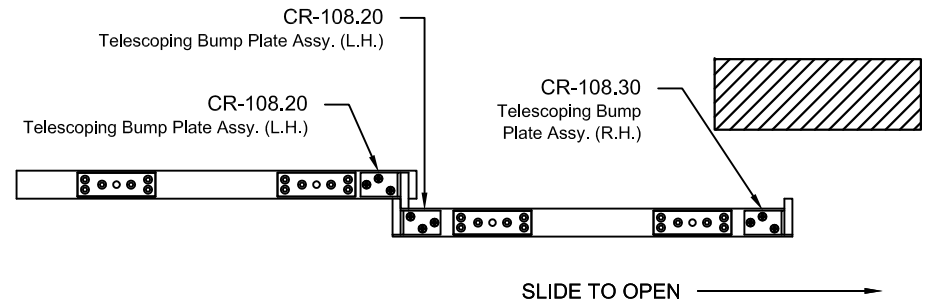
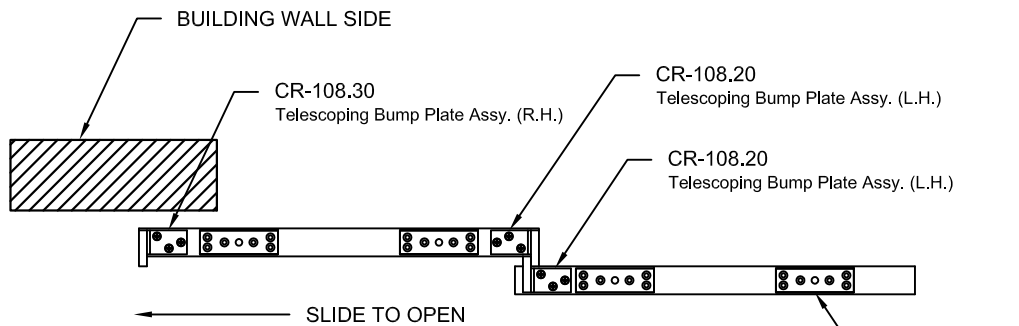


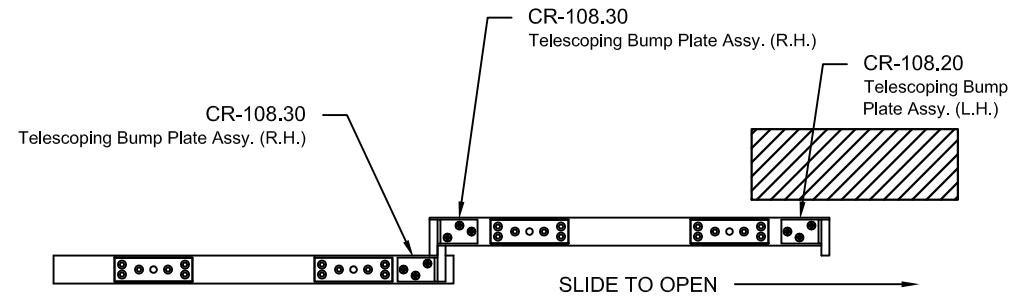
CR-108.3 TELESOPING LEFT HAND REVERSE



CR-108.4 TELESOPING RIGHT HAND REVERSE



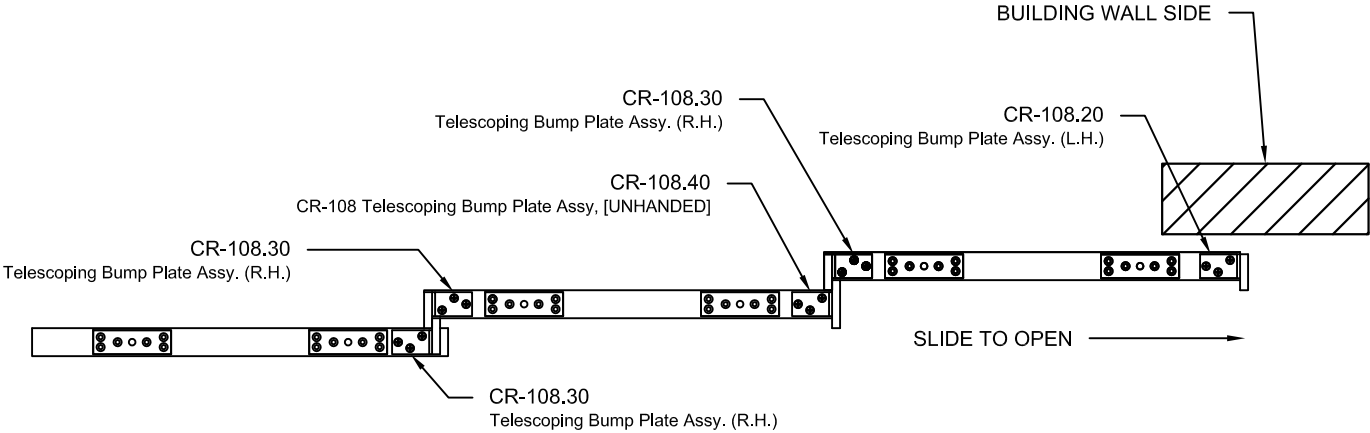
CR-108.1 TELESOPING LEFT HAND



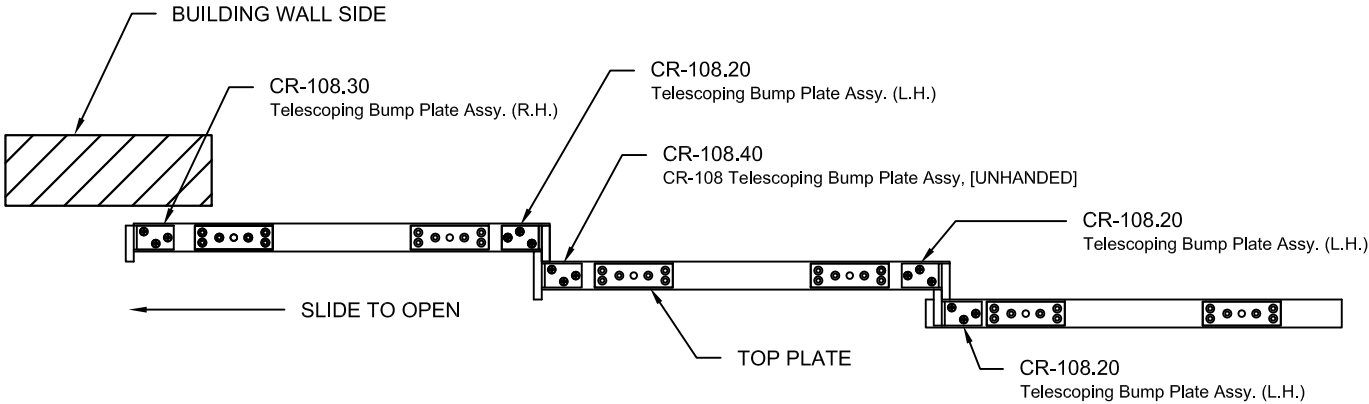
CR-108.2 TELESOPING RIGHT HAND

REVISIONS			
REV.	DESCRIPTION	DATE	APPROVED

REVISIONS			
REV.	DESCRIPTION	DATE	APPROVED
1	HANDING LABELING	01-07-09	BCM



CR-108.6 TELESCOPING RIGHT HAND



CR-108.5 TELESCOPING LEFT HAND

4

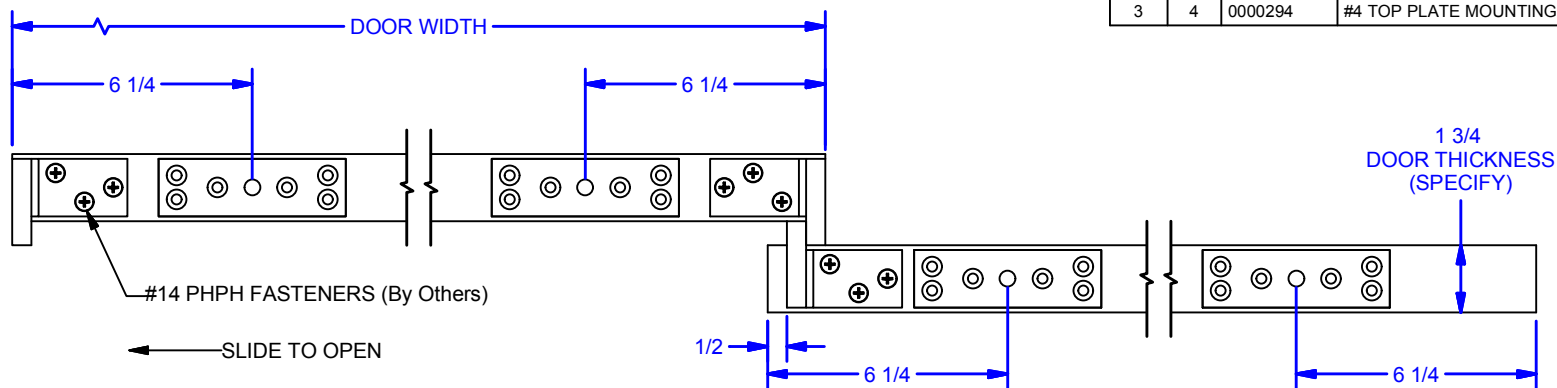
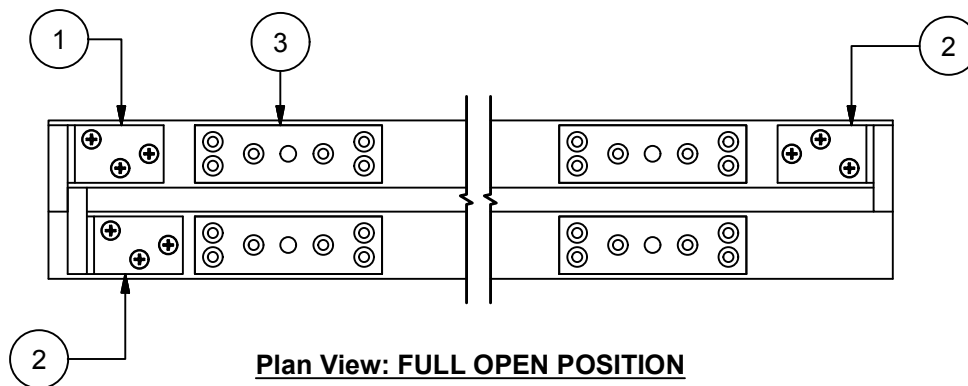
3

2

1

**BUILDING WALL SIDE**

Parts List				
ITEM	QTY	PART #	DESCRIPTION	STOCK #
1	1	0000327	Telescoping Bump Plate Assy. (R.H.)	CR-108.30
2	2	0000326	Telescoping Bump Plate Assy. (L.H.)	CR-108.20
3	4	0000294	#4 TOP PLATE MOUNTING	4TP

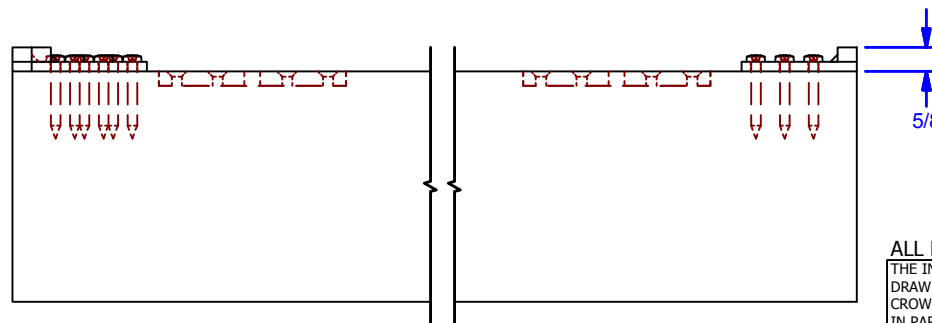
**Plan View: FULL CLOSED POSITION****Plan View: FULL OPEN POSITION**

SPECIFY UPON ORDER:

HANDING:

TELESCOPING RIGHT HAND  
 TELESCOPING LEFT HAND  
 TELESCOPING RIGHT HAND REVERSE  
 TELESCOPING LEFT HAND REVERSE

DOOR THICKNESS, (1-1/2" MIN. DOOR THICKNESS):

DISTANCE FROM  $\frac{1}{2}$  TO  $\frac{1}{2}$  OF TRACKS:**Elevation: FULL OPEN POSITION**

TELESCOPING LEFT HAND AS SHOWN  
 TELESCOPING RIGHT HAND, OPPOS. AS SHOWN

**ALL DIMENSIONS IN INCHES**

THE INFORMATION CONTAINED IN THIS DRAWING IS THE SOLE PROPERTY OF CROWN INDUSTRIAL. ANY REPRODUCTION IN PART OR AS A WHOLE WITHOUT THE WRITTEN PERMISSION OF CROWN INDUSTRIAL IS PROHIBITED.

DESCRIPTION:

Telescoping Bump System (L.H.) [2 Panel Slide Left Direction]

FINISH:

Clear Zinc

ID #:

0000328

STOCK PART #:

CR-108.1

MATERIAL:

Steel

# PCS:

1

REV:

A



**CROWN  
INDUSTRIAL**

So. San Francisco, Ca  
 (650) 952-5150

www.crown-industrial.com

Telescoping Hardware for #4 Hardware  
 DWG #: CR-108  
 DRAWN:BCM 12/18/2008  
 SHEET #1  
 File: 0000328.idw

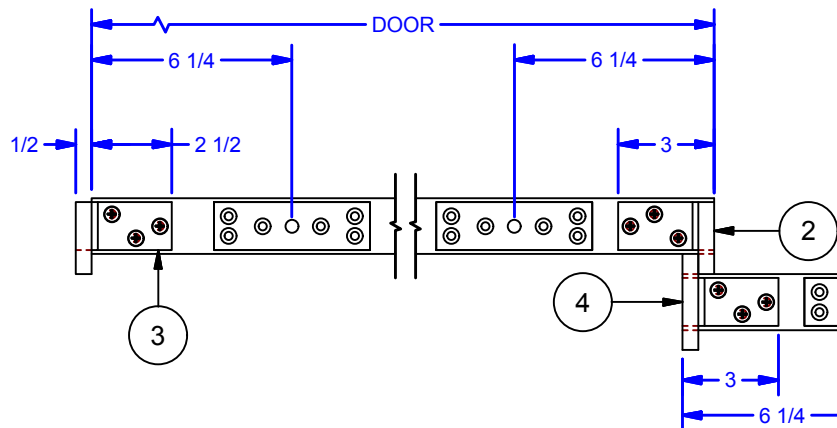
4

3

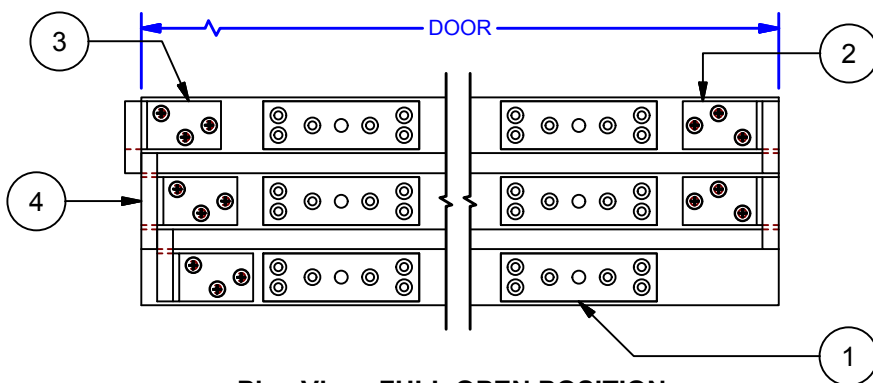
2

1

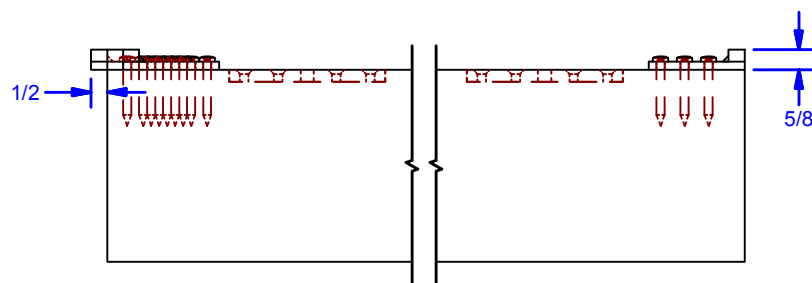
Parts List				
ITEM	QTY	PART #	DESCRIPTION	STOCK #
1	6	0000294	#4 TOP PLATE MOUNTING	4TP
2	3	0000326	Telescoping Bump Plate Assy. (L.H.)	CR-108.20
3	1	0000327	Telescoping Bump Plate Assy. (R.H.)	CR-108.30
4	1	0000330	CR-108 Telescoping Bump Plate Assy. (3 panel) [UNHANDED]	CR-108.40



**Plan View: FULL CLOSED POSITION**



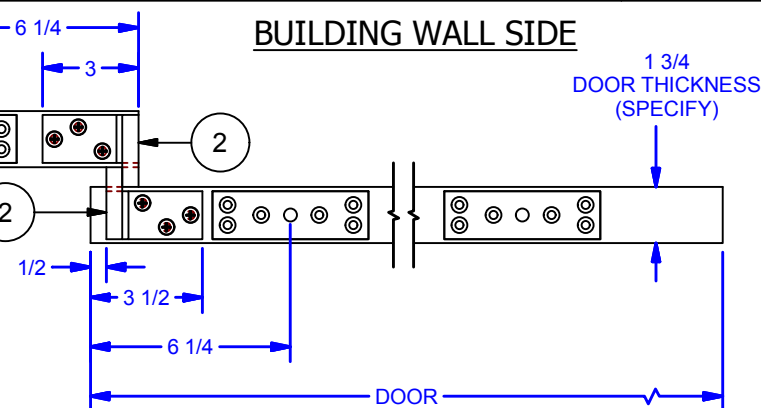
**Plan View: FULL OPEN POSITION**



**Elevation: FULL OPEN POSITION**

Telescoping Hardware for #4 Hardware  
 DWG #: CR-108  
 DRAWN: BCM 12/18/2008  
 SHEET #2  
 File: 0000328.idw

**BUILDING WALL SIDE**



SPECIFY UPON ORDER:

HANDING:

TELESCOPING RIGHT HAND  
 TELESCOPING LEFT HAND  
 TELESCOPING RIGHT HAND REVERSE  
 TELESCOPING LEFT HAND REVERSE

DOOR THICKNESS, (1-1/2" MIN. DOOR THICKNESS):

DISTANCE FROM  $\text{t}$  TO  $\text{t}$  OF TRACKS:

TELESCOPING LEFT HAND AS SHOWN  
 TELESCOPING RIGHT HAND, OPPOS. AS SHOWN

**ALL DIMENSIONS IN INCHES**

THE INFORMATION CONTAINED IN THIS DRAWING IS THE SOLE PROPERTY OF CROWN INDUSTRIAL. ANY REPRODUCTION IN PART OR AS A WHOLE WITHOUT THE WRITTEN PERMISSION OF CROWN INDUSTRIAL IS PROHIBITED.	ID #:	STOCK PART #:
	0000332	CR-108.5
MATERIAL:		
Steel		
DESCRIPTION:		
Telescoping Bump System (L.H.) [3 Panel Slide Left Direction]		
FINISH:		# PCS. REV:
Clear Zinc		1 1



**CROWN INDUSTRIAL**  
 So. San Francisco, Ca  
 (650) 952-5150  
 www.crown-industrial.com