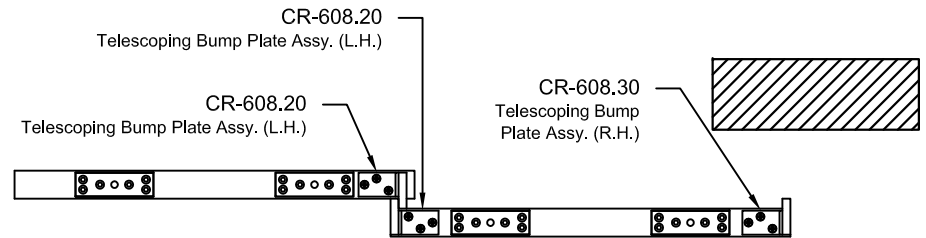
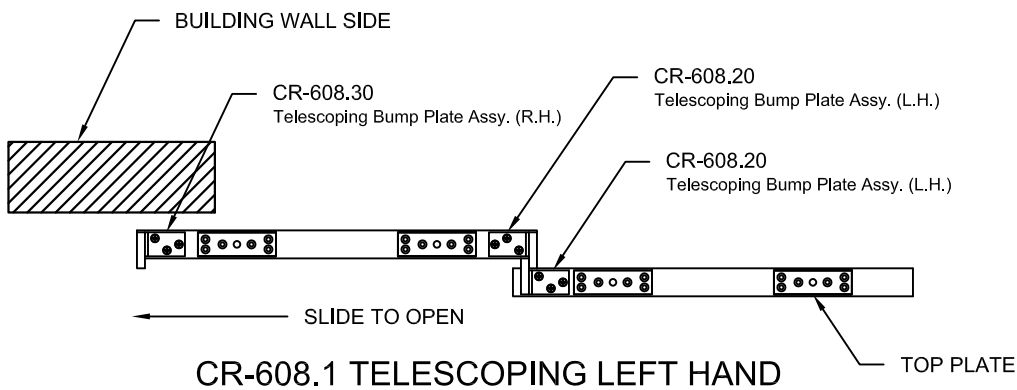


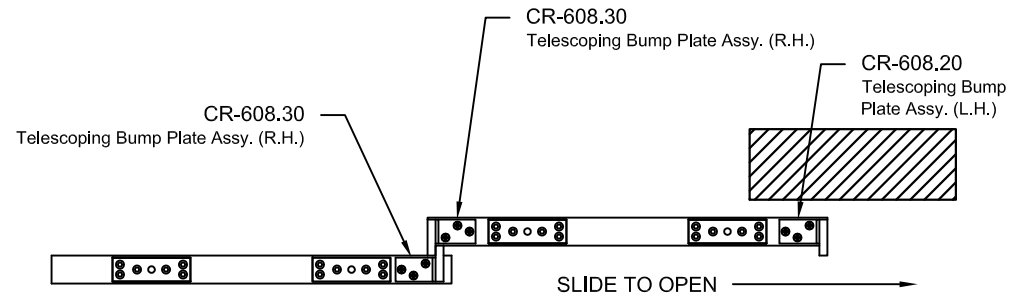
CR-608.3 TELESCOPING LEFT HAND REVERSE



CR-608.4 TELESCOPING RIGHT HAND REVERSE



CR-608.1 TELESCOPING LEFT HAND

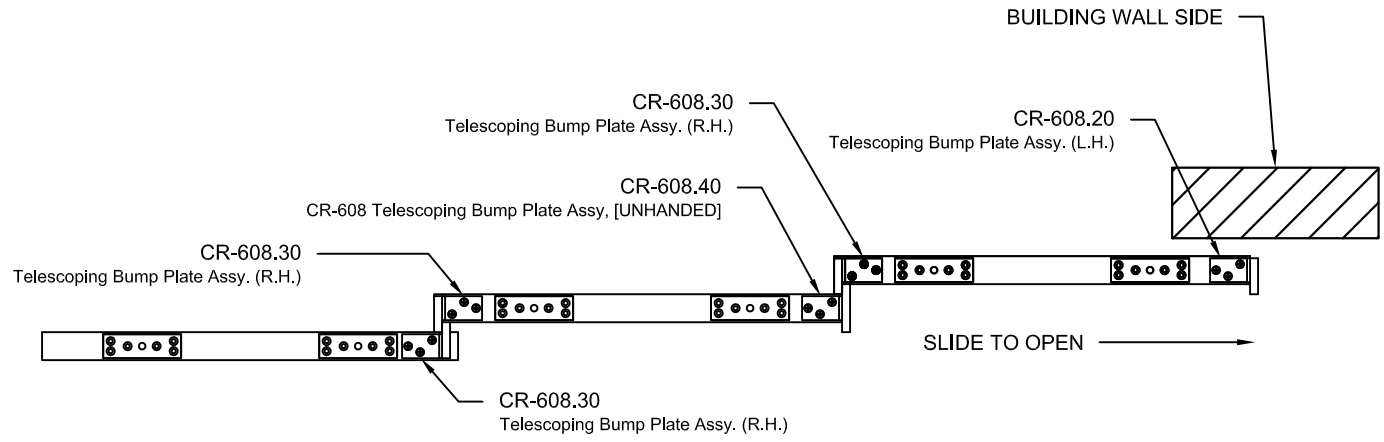


CR-608.2 TELESCOPING RIGHT HAND

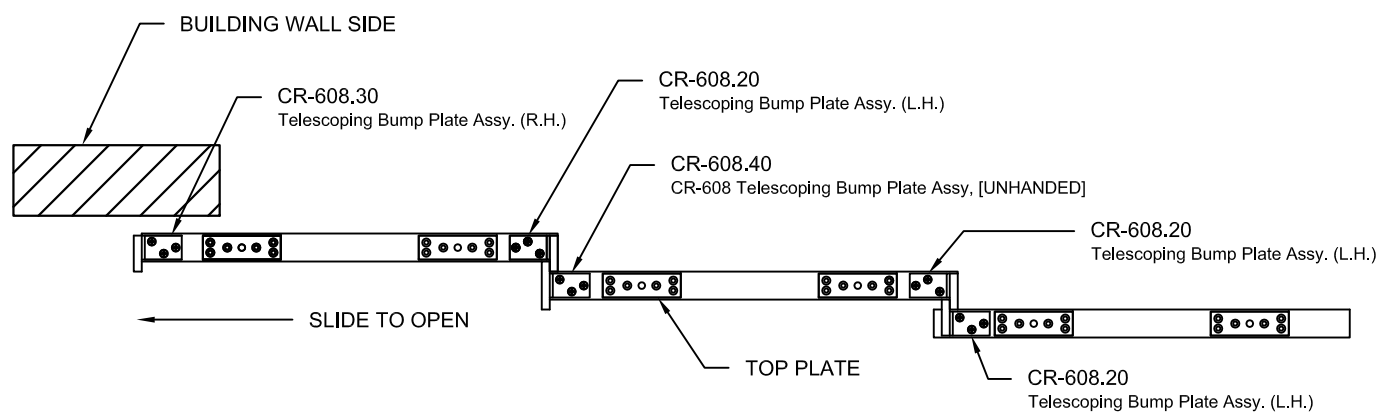
REVISIONS			
REV.	DESCRIPTION	DATE	APPROVED



REVISIONS			
REV.	DESCRIPTION	DATE	APPROVED
1	HANDING LABELING	01-07-09	BCM



**CR-608.6 TELESCOPING RIGHT HAND**



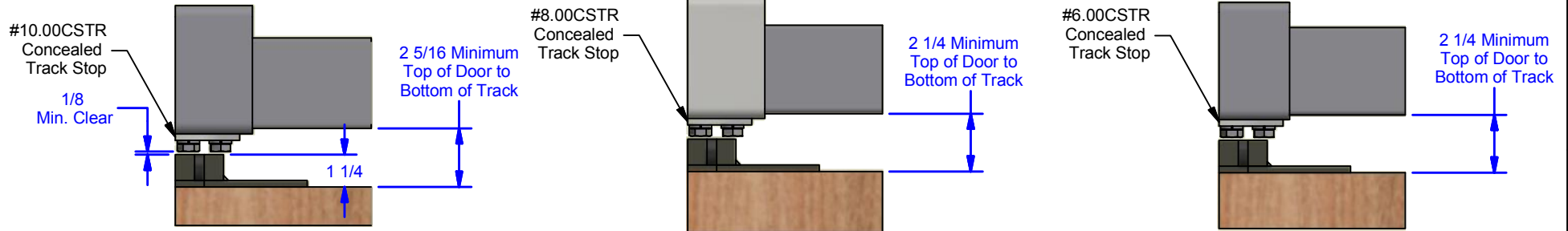
**CR-608.5 TELESCOPING LEFT HAND**

DWG #0000329  
 DESCIP: CR-608 TELESCOPING HANDING (3 PANEL)  
 DRAWN:BCM 12-18-08 REV:----  
 SCALE: 1" = 1'-0"  
 SHEET # 4  
 FILE:c:\vault\workspace\deslgn\0000329

THE INFORMATION CONTAINED IN THIS DRAWING IS THE SOLE PROPERTY OF CROWN INDUSTRIAL. ANY REPRODUCTION IN PART OR AS A WHOLE WITHOUT WRITTEN PERMISSION OF CROWN INDUSTRIAL IS PROHIBITED.



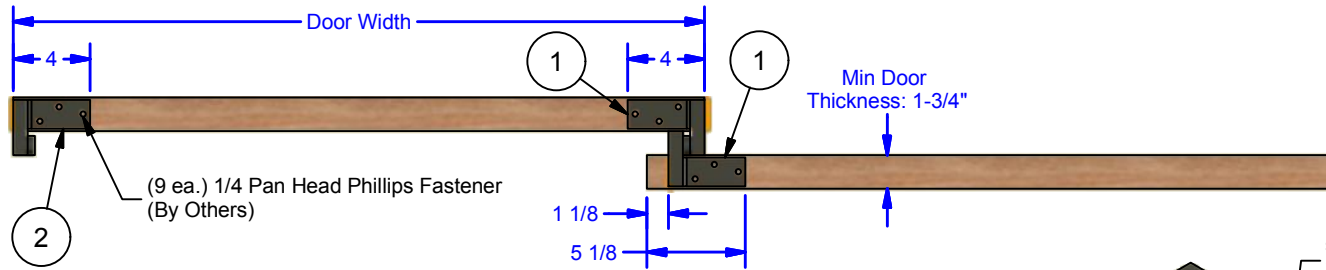
Parts List				
ITEM	QTY	ID #	DESCRIPTION	STOCK PART #
1	2	0002546	Telescoping Bump Plate Assy. (L.H.), for #6	CR-608.20
2	1	0002547	Telescoping Bump Plate Assy. (R.H.), for #6	CR-608.30



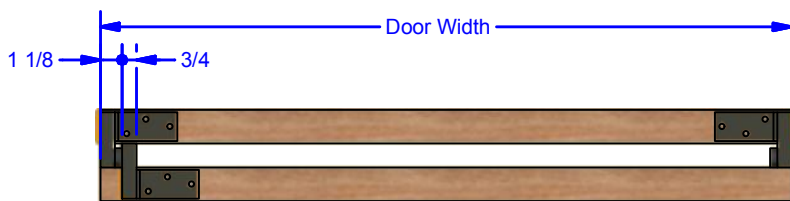
**#10 Track**

**#8 Track**

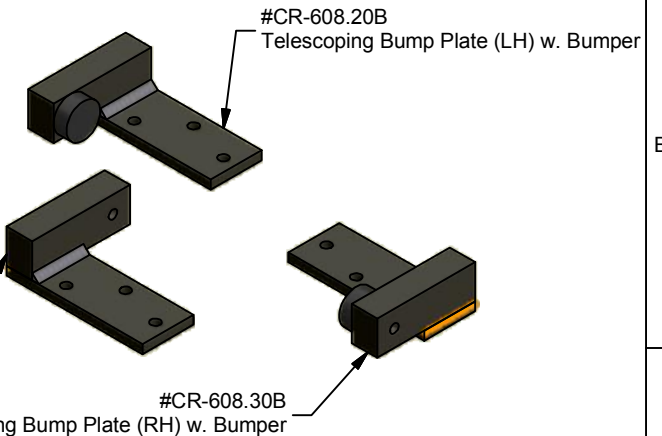
**#6 Track**



**Plan View: FULL CLOSED POSITION**



**Plan View: FULL OPEN POSITION**



**Specify Following Upon Ordering:**

1. Handing: Right Hand / Left Hand / Right Hand Reverse / Left Hand Reverse
2. Door Thickness (1-3/4" Min. Door Thickness):
3. Distance from Centerline to Centerline of Tracks:

**Telescoping Left Hand As Shown,  
Telescoping Right Hand Opposite as Shown.**

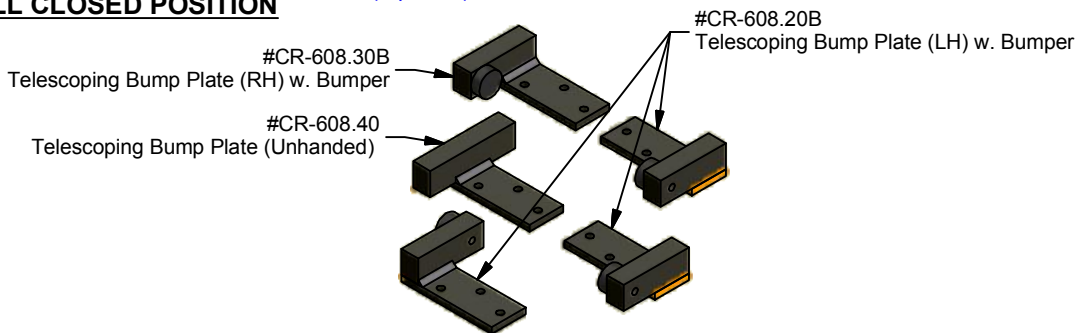
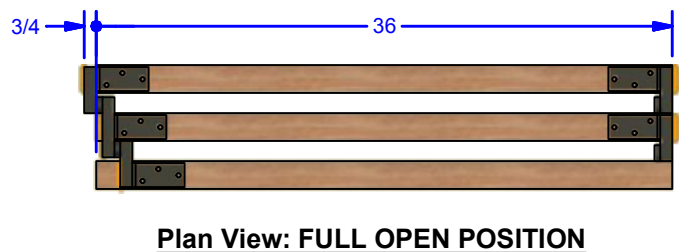
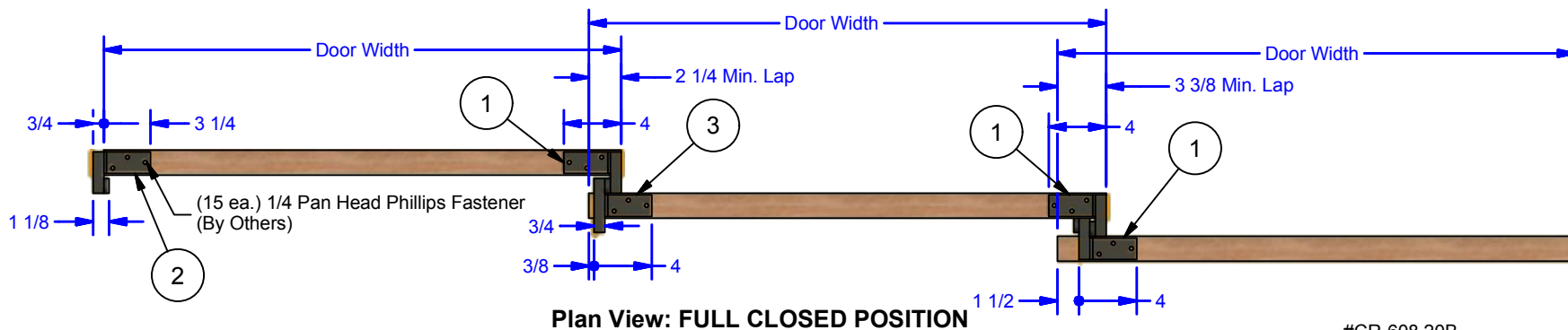
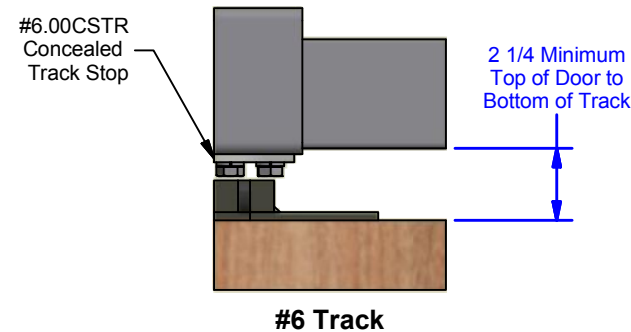
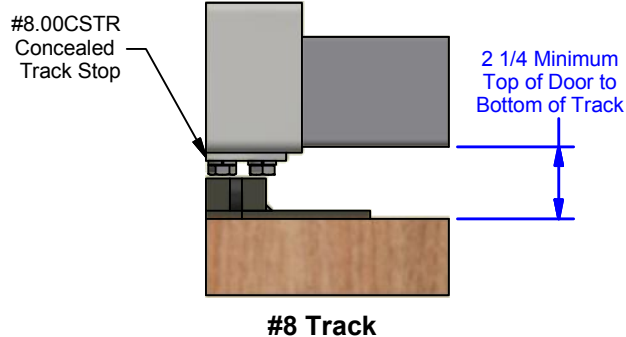
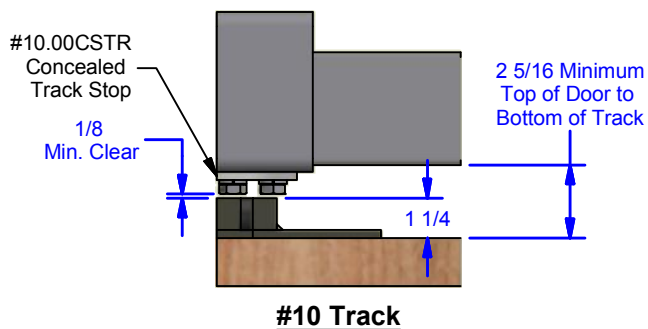
**ALL DIMENSIONS IN INCHES**

THE INFORMATION CONTAINED IN THIS DRAWING IS THE SOLE PROPERTY OF CROWN INDUSTRIAL. ANY REPRODUCTION IN PART OR AS A WHOLE WITHOUT THE WRITTEN PERMISSION OF CROWN INDUSTRIAL IS PROHIBITED.	ID #: 0002560	STOCK PART #: CR-106.1
DESCRIPTION: Telescoping Bump Plate System, LH [2 Panel Slide Left Direction]	MATERIAL:	
FINISH: Ptd. Gloss Black	# PCS:	REV:



**CROWN INDUSTRIAL**  
So. San Francisco, Ca  
(650) 952-5150  
www.crown-industrial.com

Parts List				
ITEM	QTY	ID #	DESCRIPTION	STOCK PART #
1	3	0002546	Telescoping Bump Plate Assy. (L.H.), for #6	CR-608.20
2	1	0002547	Telescoping Bump Plate Assy. (R.H.), for #6	CR-608.30
3	1	0002548	Telescoping Bump Plate Assy. (3 panel) [UNHANDED], for #6	CR-608.40



**Specify Following Upon Ordering:**

1. Handing: Right Hand / Left Hand / Right Hand Reverse / Left Hand Reverse
2. Door Thickness (1-3/4" Min. Door Thickness):
3. Distance from Centerline to Centerline of Tracks:

**Telescoping Left Hand As Shown,  
Telescoping Right Hand Opposite as Shown.**

**ALL DIMENSIONS IN INCHES**

THE INFORMATION CONTAINED IN THIS DRAWING IS THE SOLE PROPERTY OF CROWN INDUSTRIAL. ANY REPRODUCTION IN PART OR AS A WHOLE WITHOUT THE WRITTEN PERMISSION OF CROWN INDUSTRIAL IS PROHIBITED.	ID #:	0002561	STOCK PART #:	CR-106.5
	MATERIAL:			
DESCRIPTION: Telescoping Bump Plate System, LH [3 Panel Slide Left Direction]				
FINISH: Ptd. Gloss Black			# PCS:	REV:

4

3

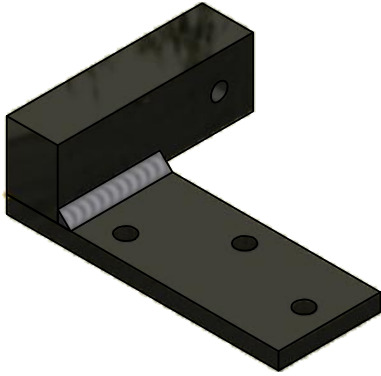


2

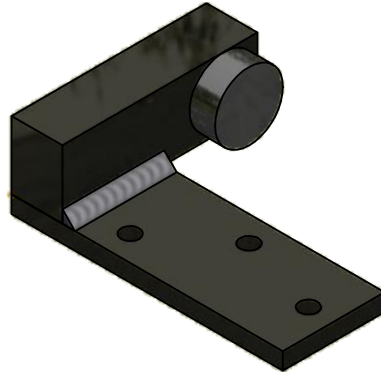
1

D

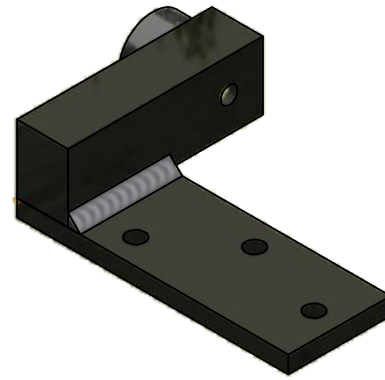
D



**#CR-608.20**  
**Telescoping Bump Plate**  
**Left Hand, No Bumper**



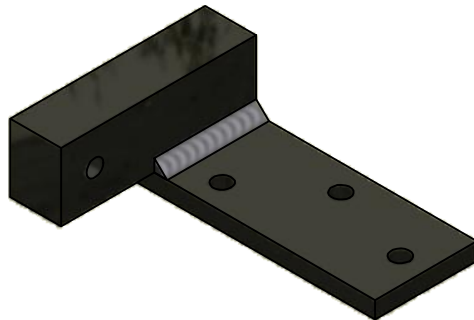
**#CR-608.20BI**  
**Telescoping Bump Plate**  
**Left Hand, Bumper Inside**



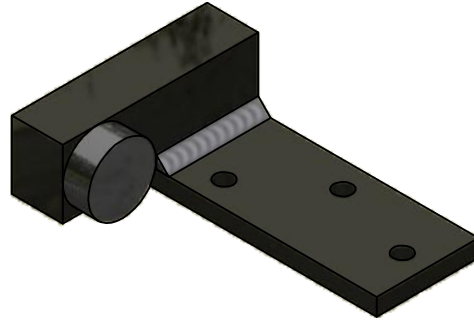
**#CR-608.20BO**  
**Telescoping Bump Plate**  
**Left Hand, Bumper Outside**

C

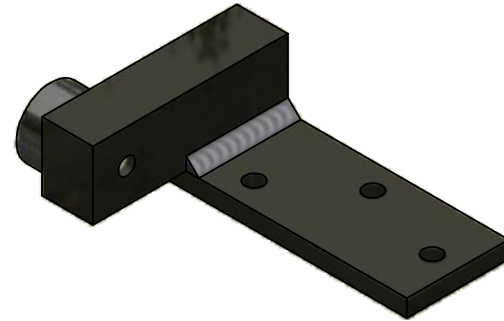
C



**#CR-608.30**  
**Telescoping Bump Plate**  
**Right Hand, No Bumper**



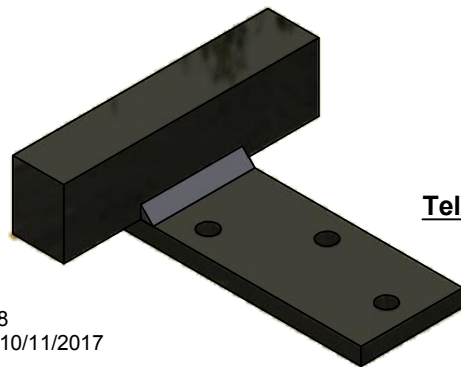
**#CR-608.30BI**  
**Telescoping Bump Plate**  
**Right Hand, Bumper Inside**



**#CR-608.30BO**  
**Telescoping Bump Plate**  
**Right Hand, Bumper Outside**

B

B



**#CR-608.40**  
**Telescoping Bump Plate**  
**Unhanded**

A

A

DWG #: CR-608  
DRAWN:BCM 10/11/2017  
SHEET #3  
File: 0000750.idw

**ALL DIMENSIONS IN INCHES**

THE INFORMATION CONTAINED IN THIS DRAWING IS THE SOLE PROPERTY OF CROWN INDUSTRIAL. ANY REPRODUCTION IN PART OR AS A WHOLE WITHOUT THE WRITTEN PERMISSION OF CROWN INDUSTRIAL IS PROHIBITED.

**DESCRIPTION:**

Telescoping Bump Plate System, LH [2 Panel Slide Left Direction]

**FINISH:**

Ptd. Gloss Black

ID #: 0002560

STOCK PART #: CR-106.1

**MATERIAL:**

# PCS. REV:



**CROWN INDUSTRIAL**

So. San Francisco, Ca  
(650) 952-5150

[www.crown-industrial.com](http://www.crown-industrial.com)

4

3



2

1