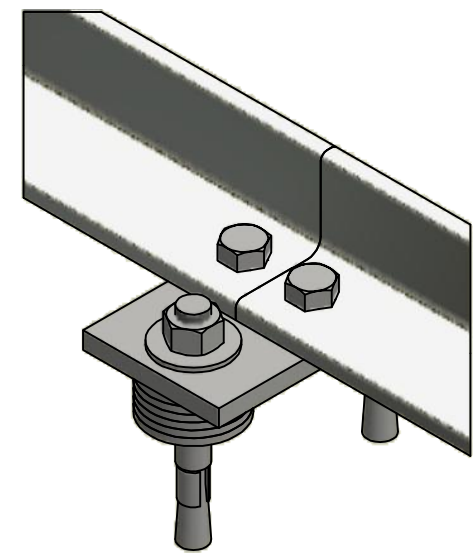
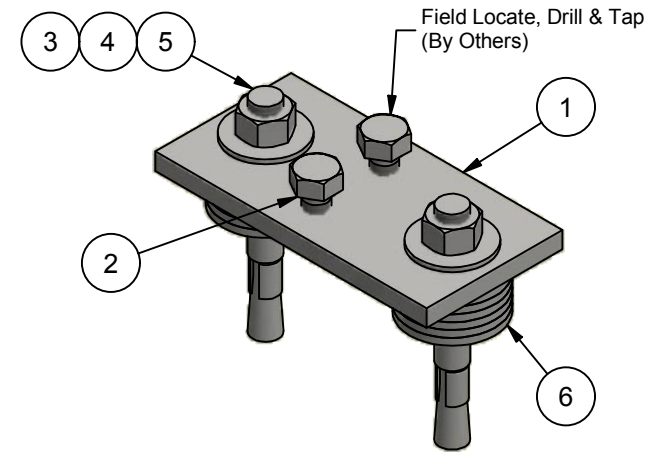
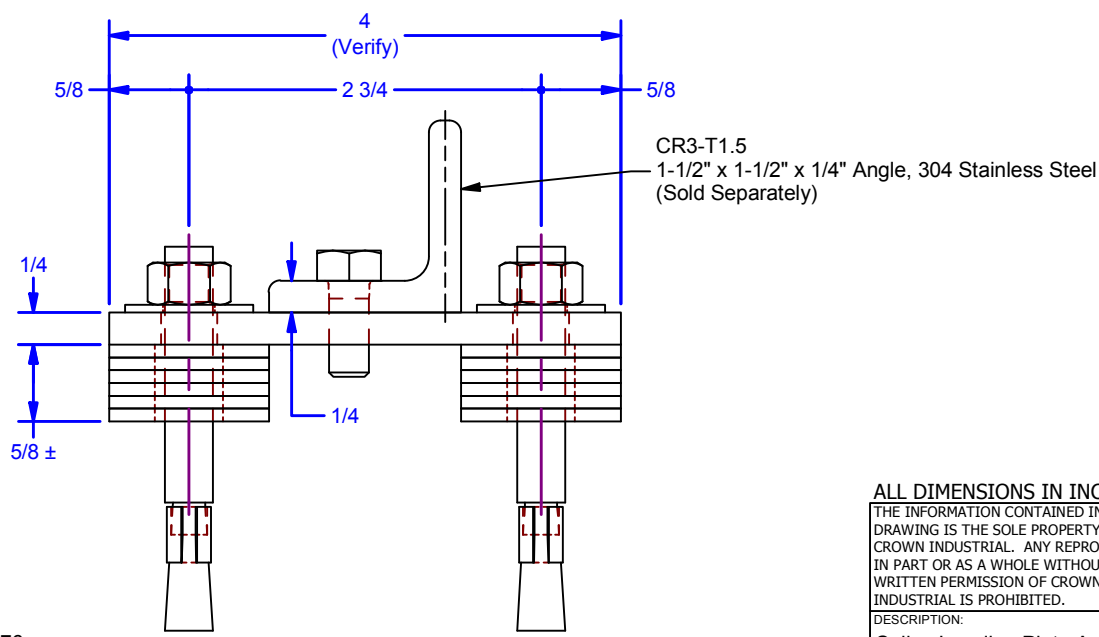
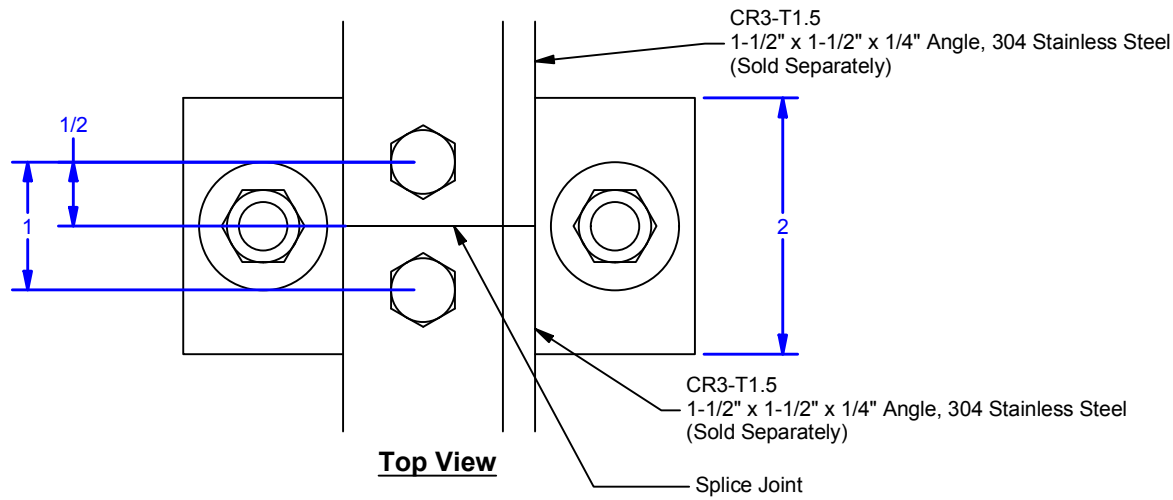


| Parts List | | | | |
|------------|-----|---------------------------------|--------------------------------------|---------|
| ITEM | QTY | PART # | DESCRIPTION | STOCK # |
| 1 | 1 | 0001688 | Leveling Plate | CR3-LP |
| 2 | 2 | HHMB 5/16-18 UNC - 0.75 -5 Zinc | Hex Head Machine Bolt -Grade 5, Zinc | |
| 3 | 2 | FW 3/8 - Regular - Type B | Flat Washer | |
| 4 | 2 | N 3/8 - 16 | Hex Nut - Grade 5 | |
| 5 | 2 | WA375-300 | 0.375 x 3 Wedge Concrete Anchor | |
| 6 | 12 | FW 1/2 - Regular - Type B | Flat Washer | |



ALL DIMENSIONS IN INCHES

THE INFORMATION CONTAINED IN THIS DRAWING IS THE SOLE PROPERTY OF CROWN INDUSTRIAL. ANY REPRODUCTION IN PART OR AS A WHOLE WITHOUT THE WRITTEN PERMISSION OF CROWN INDUSTRIAL IS PROHIBITED.

DESCRIPTION:
Splice Leveling Plate Assembly

FINISH:
Prime Painted

ID #:
0002817

MATERIAL:

STOCK PART #:
CR3-LP-SP

PCS: REV:

DWG #: 0001676
DRAWN: BCM 1/28/2019
SHEET #5
File: 0001676.idw



CROWN INDUSTRIAL
So. San Francisco, Ca
(650) 952-5150
www.crown-industrial.com