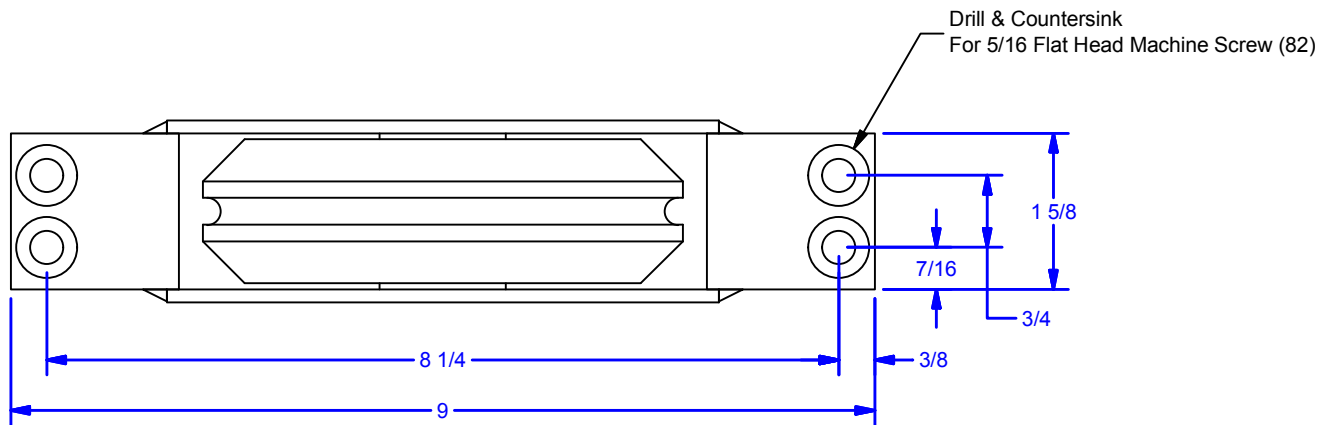
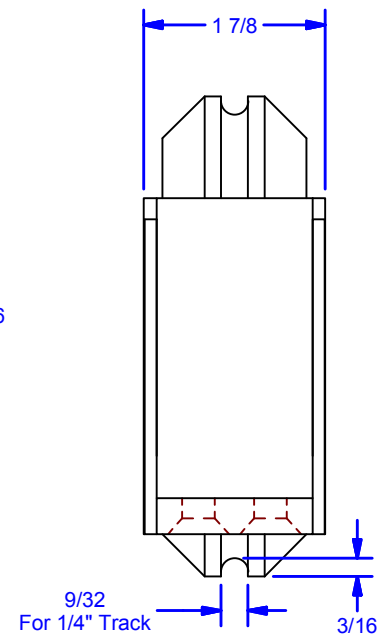
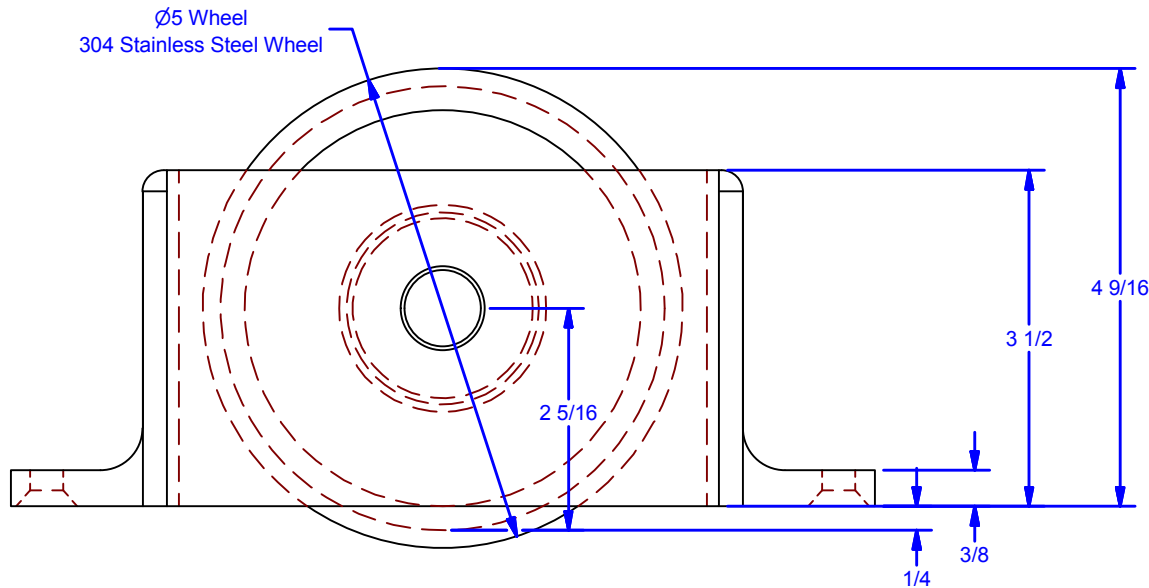


4 3 2 1



ALL DIMENSIONS IN INCHES

THE INFORMATION CONTAINED IN THIS DRAWING IS THE SOLE PROPERTY OF CROWN INDUSTRIAL. ANY REPRODUCTION IN PART OR AS A WHOLE WITHOUT THE WRITTEN PERMISSION OF CROWN INDUSTRIAL IS PROHIBITED.	ID #: 0001530	STOCK PART #: CR5
	MATERIAL: Welded Steel Mild	
DESCRIPTION: Medium Duty Bottom Roller Assy		
FINISH:	# PCS: 1	REV: 1

DWG #: 0002644
DRAWN: BCM 11/8/2013
SHEET #1
File: 0002644.idw



CROWN INDUSTRIAL
So. San Francisco, Ca
(650) 952-5150
www.crown-industrial.com

4 3 2 1

4

3

2

1

D

D

C

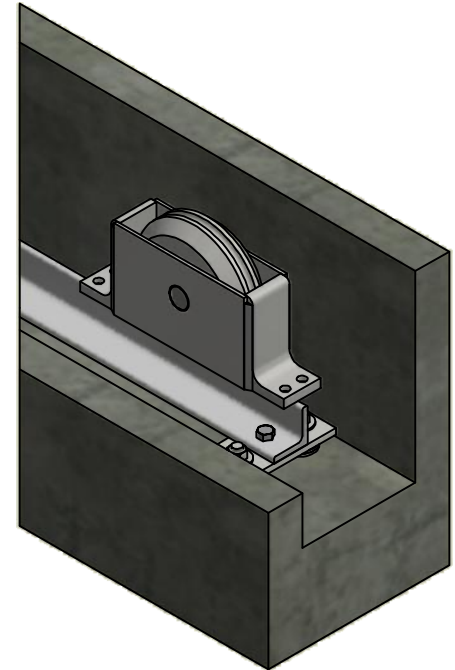
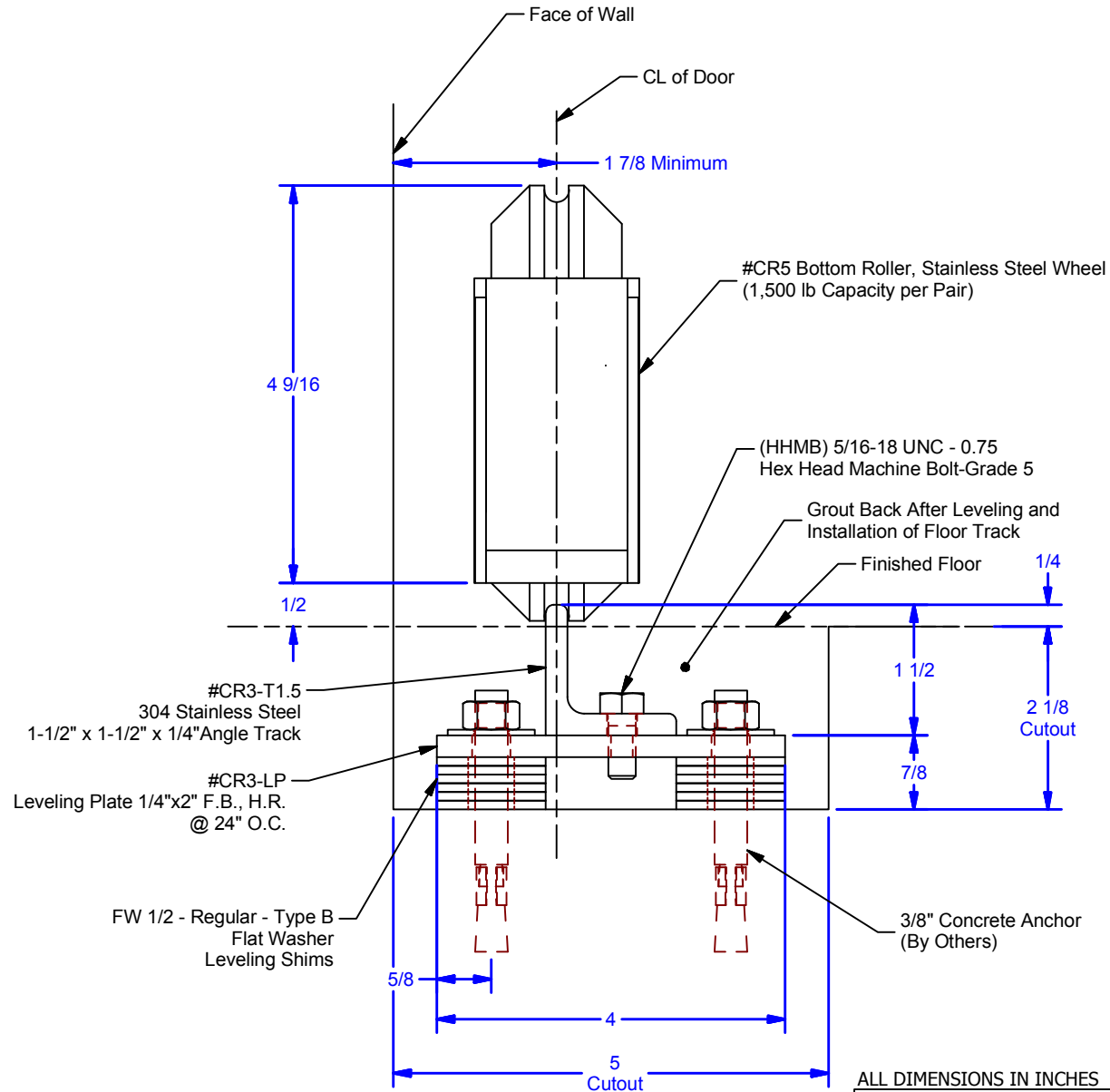
C

B

B

A

A



ALL DIMENSION $\pm 1/32"$
***DO NOT USE AS TEMPLATE, REFERENCE ONLY DRAWING**

ALL DIMENSIONS IN INCHES

THE INFORMATION CONTAINED IN THIS DRAWING IS THE SOLE PROPERTY OF CROWN INDUSTRIAL. ANY REPRODUCTION IN PART OR AS A WHOLE WITHOUT THE WRITTEN PERMISSION OF CROWN INDUSTRIAL IS PROHIBITED.

ID #:	0001686	STOCK PART #:	
MATERIAL:			

DESCRIPTION: Bottom Roller & Floor Track : Leveling Plate Option			
FINISH:		# PCS:	REV:



CROWN INDUSTRIAL
 So. San Francisco, Ca
 (650) 952-5150
 www.crown-industrial.com

DWG #: 0002644
 DRAWN:BCM 6/26/2014
 SHEET #2
 File: 0002644.idw

4

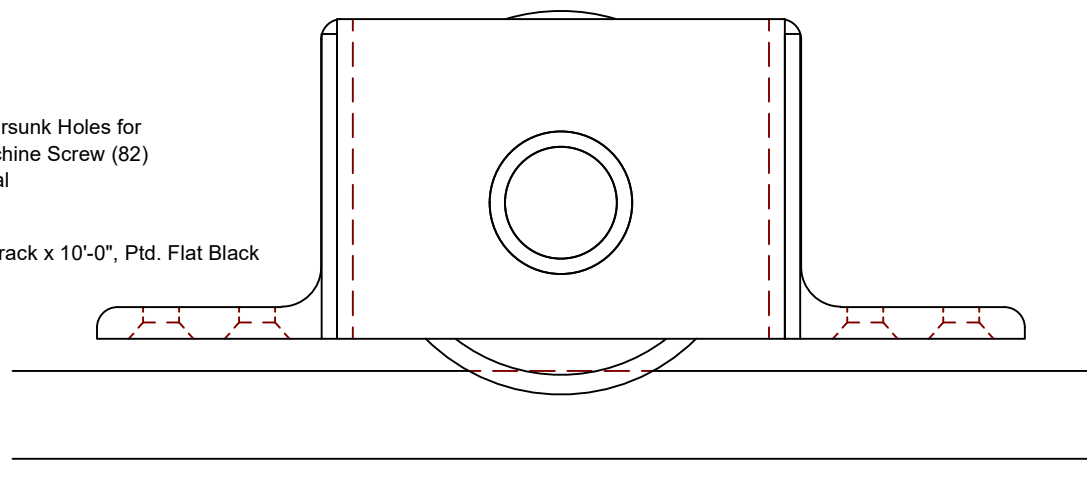
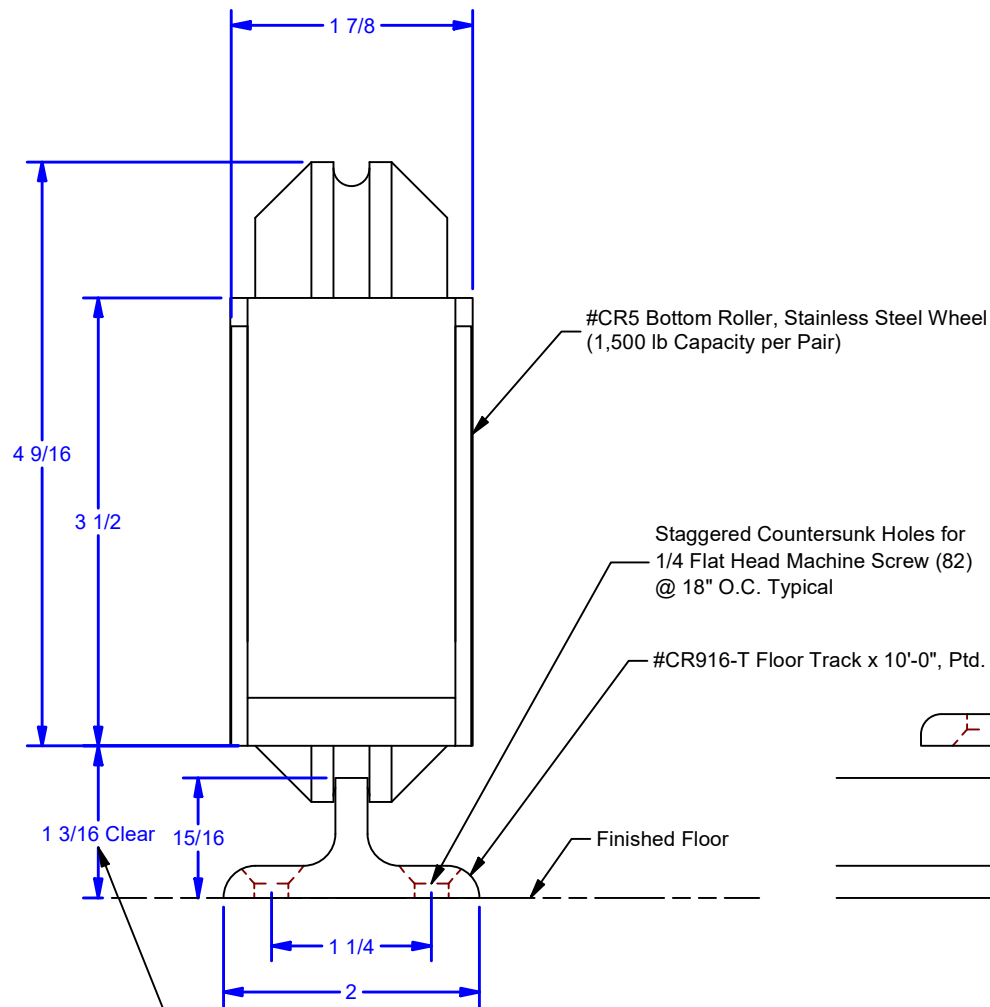
3

2

1



REVISIONS				
ZONE	REV	DESCRIPTION	DATE	BY
	A	Height of Floor Track	6-7-21	BCM



ALL DIMENSIONS IN INCHES

THE INFORMATION CONTAINED IN THIS DRAWING IS THE SOLE PROPERTY OF CROWN INDUSTRIAL. ANY REPRODUCTION IN PART OR AS A WHOLE WITHOUT THE WRITTEN PERMISSION OF CROWN INDUSTRIAL IS PROHIBITED.	ID #:	0002643	STOCK PART #:	CR5x916TW
	MATERIAL:			
DESCRIPTION:				
Bottom Roller & Floor Track				
FINISH:			# PCS:	REV:
				A



CROWN INDUSTRIAL

So. San Francisco, Ca
(650) 952-5150

www.crown-industrial.com

DWG #: 0002644
DRAWN:BCM 3/7/2018
SHEET #3

File: 0002644.idw