

4

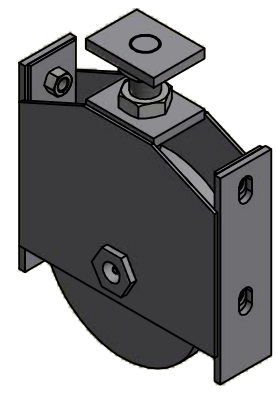
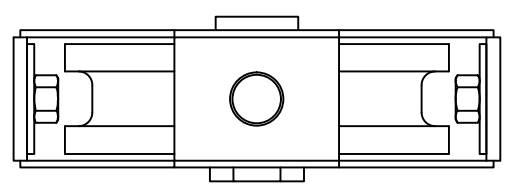
3



2

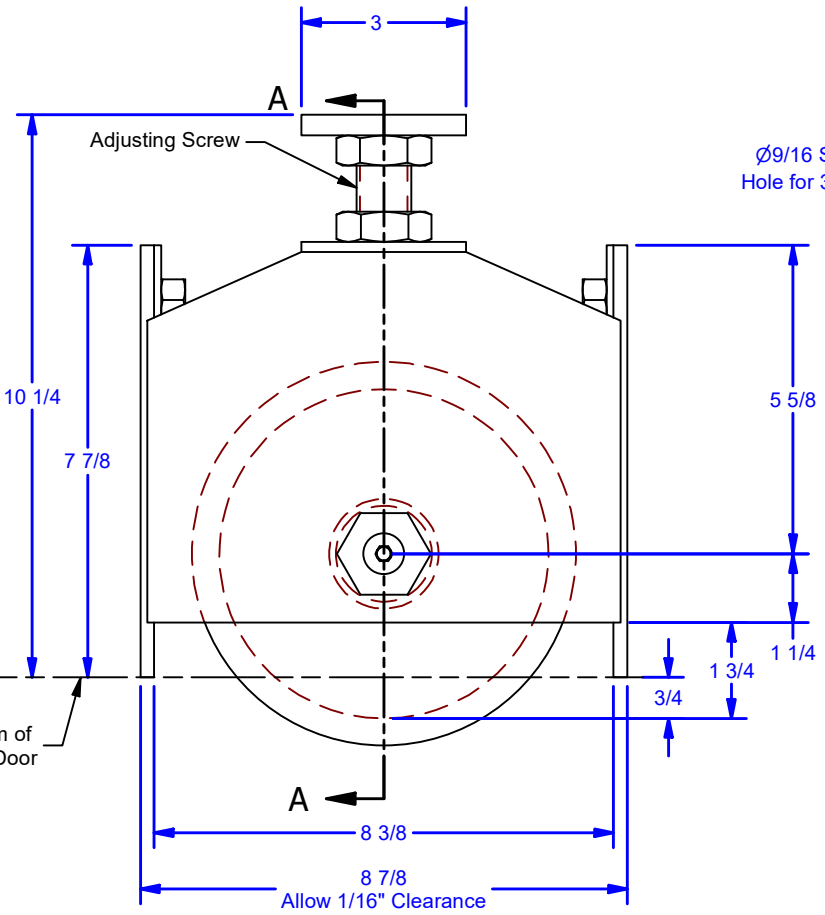
1

D

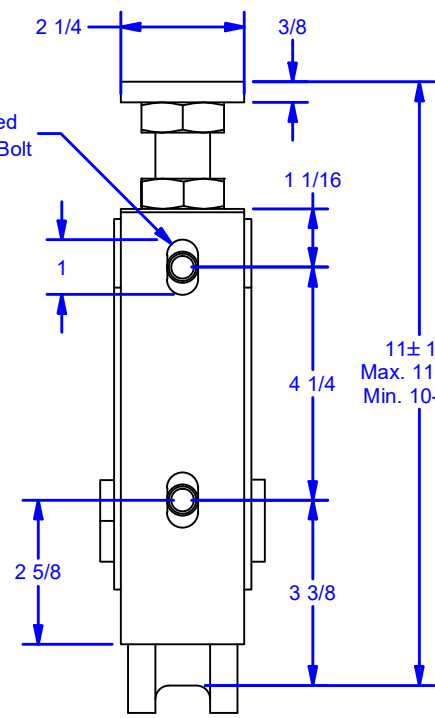


D

C

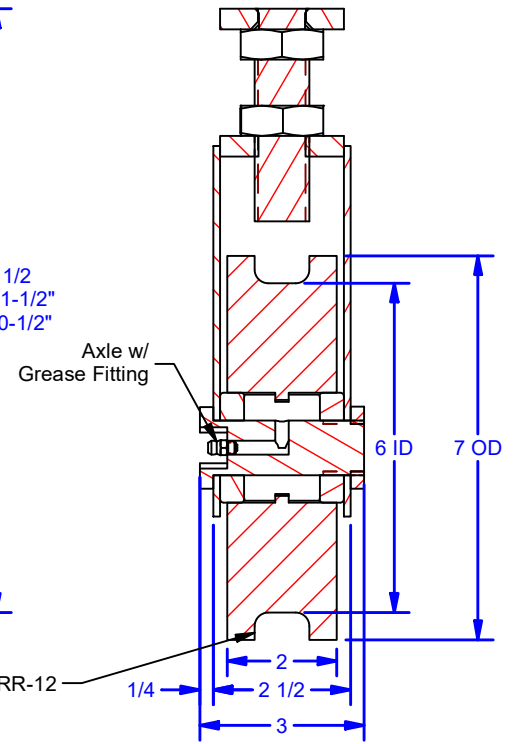


Ø9/16 Slotted Hole for 3/8" Bolt



11 ± 1/2
Max. 11-1/2"
Min. 10-1/2"

SECTION A-A



B

B

A

A

DWG #: 0000946
 DRAWN:BCM 5/21/2015
 SHEET #1
 File: 0000946.idw

Ratings @ 10RPM
 Radial: 7,500 lbs.
 Thrust: 3,000 lbs.

ALL DIMENSIONS IN INCHES

THE INFORMATION CONTAINED IN THIS DRAWING IS THE SOLE PROPERTY OF CROWN INDUSTRIAL. ANY REPRODUCTION IN PART OR AS A WHOLE WITHOUT THE WRITTEN PERMISSION OF CROWN INDUSTRIAL IS PROHIBITED.	ID #: 0002017-04	STOCK PART #: CR6-12
DESCRIPTION: 6" Bottom Roller for 12lb Rail for 3" Thk. Door	MATERIAL:	
FINISH: Ptd. Black	# PCS: 1	REV:



CROWN INDUSTRIAL
 So. San Francisco, Ca
 (650) 952-5150
 www.crown-industrial.com

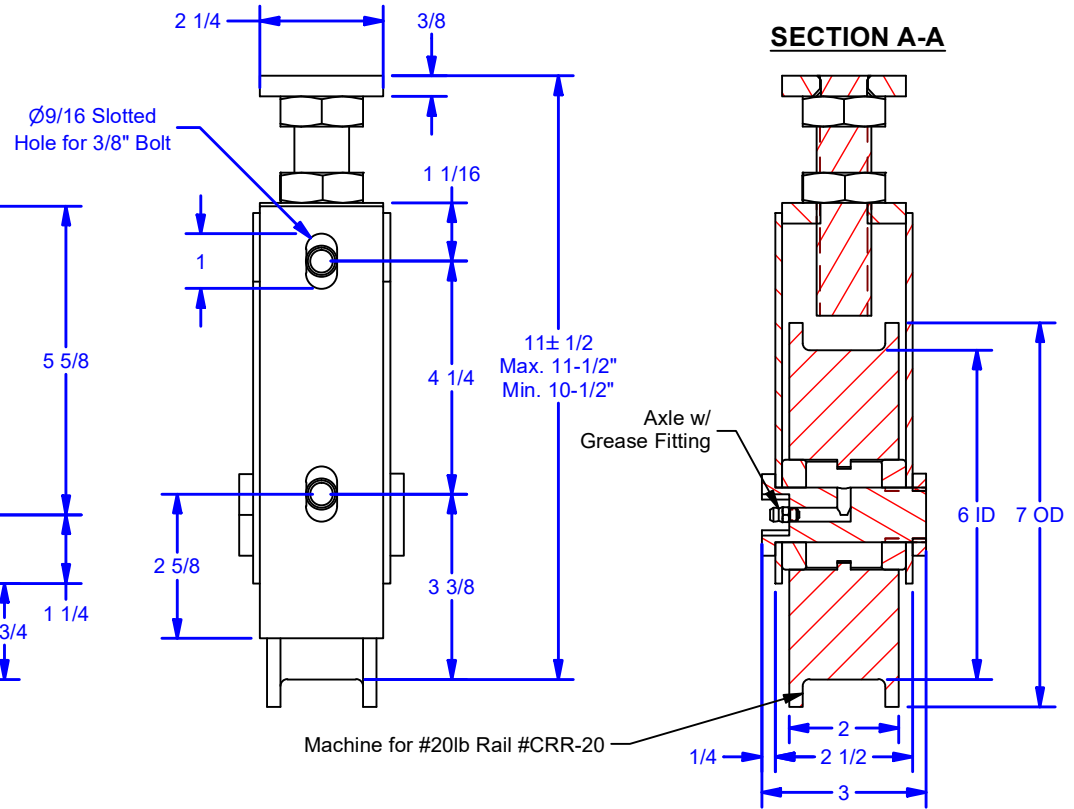
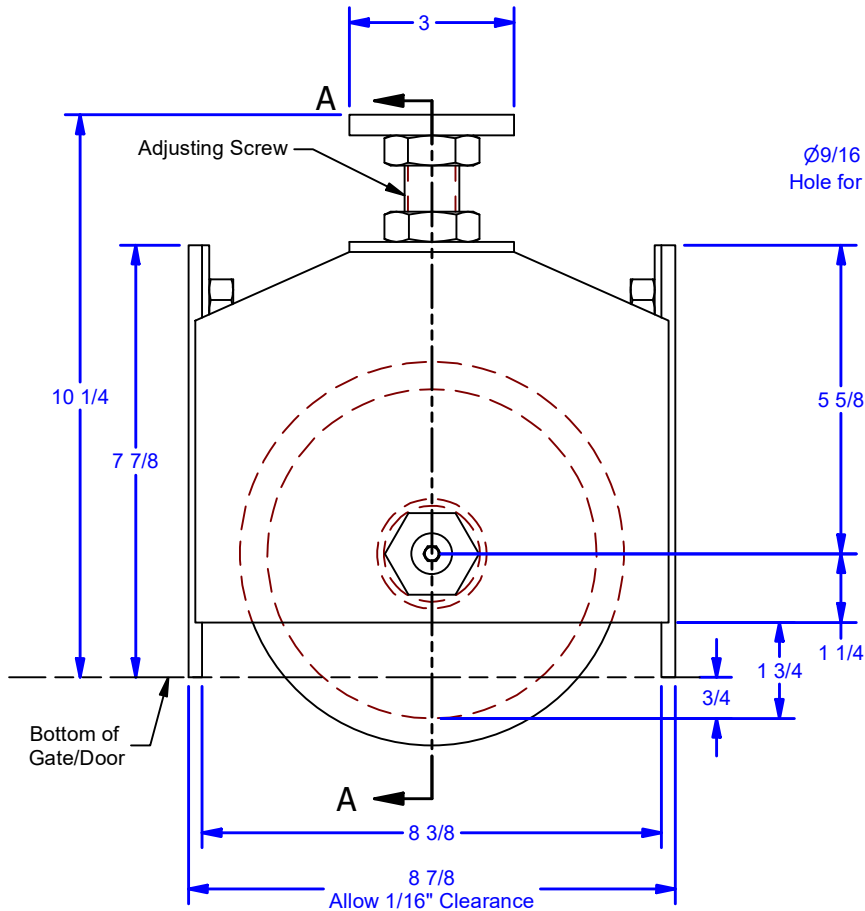
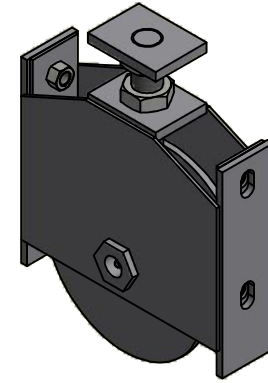
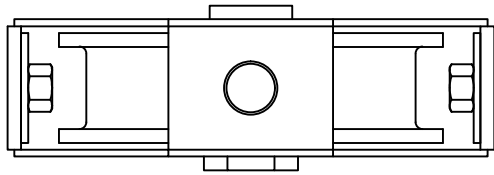
4

3



2

1



Ratings @ 10RPM
Radial: 7,500 lbs.
Thrust: 3,000 lbs.

ALL DIMENSIONS IN INCHES

THE INFORMATION CONTAINED IN THIS DRAWING IS THE SOLE PROPERTY OF CROWN INDUSTRIAL. ANY REPRODUCTION IN PART OR AS A WHOLE WITHOUT THE WRITTEN PERMISSION OF CROWN INDUSTRIAL IS PROHIBITED.

ID #: 0002017-01

STOCK PART #: CR6-20

MATERIAL:

DESCRIPTION:

6" Bottom Roller for 20lb Rail for 3" Thk. Door

FINISH:

Ptd. Black

PCS: 1

REV:

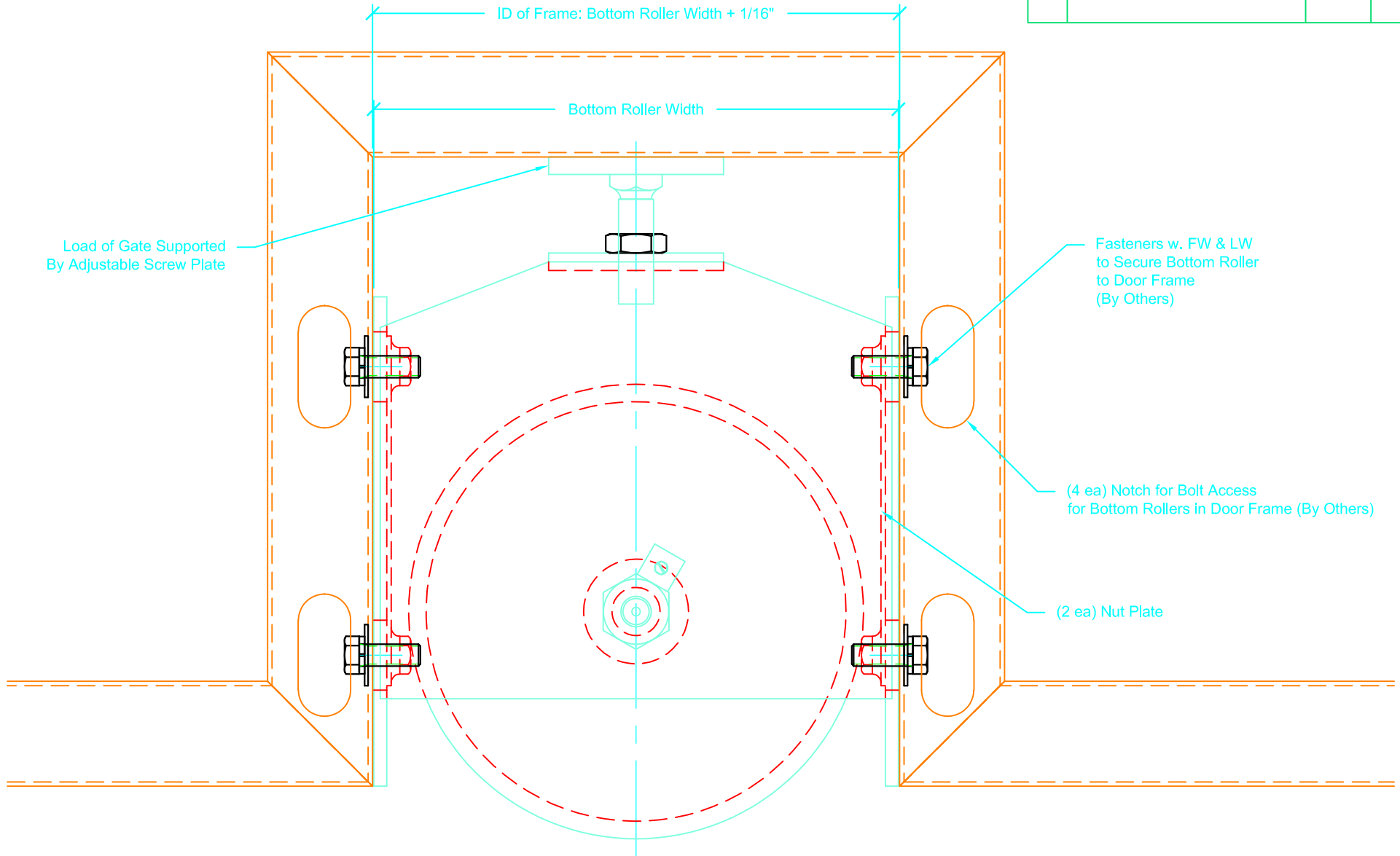
DWG #: 0000946
DRAWN:BCM 5/21/2015
SHEET #2

File: 0000946.idw



CROWN INDUSTRIAL
So. San Francisco, Ca
(650) 952-5150
www.crown-industrial.com

REVISIONS			
REV.	DESCRIPTION	DATE	APPROVED



1

Bottom Roller Generic Support Detail

 DWG #0003277
 DESCRIP: BOTTOM ROLLERS
 DRAWN:BCM 1-21-25 REV:-----
 SCALE: 3" = 1'-0"
 SHEET # 1
 FILE:d:\vault\workspace\designs_hardware\bottom rollers\0003277

THE INFORMATION CONTAINED IN THIS DRAWING IS THE SOLE PROPERTY OF CROWN INDUSTRIAL. ANY REPRODUCTION IN PART OR AS A WHOLE WITHOUT WRITTEN PERMISSION OF CROWN INDUSTRIAL IS PROHIBITED.



CROWN INDUSTRIAL
 So. San Francisco, Ca
 (650) 952-5150
 www.crown-industrial.com