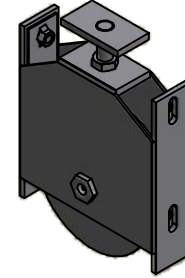
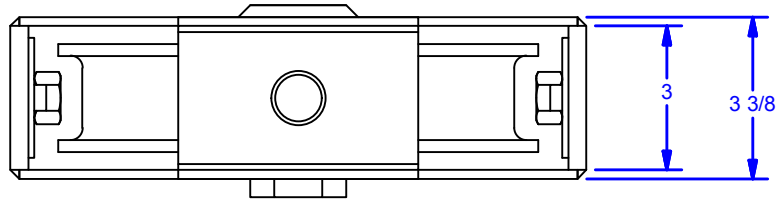


4

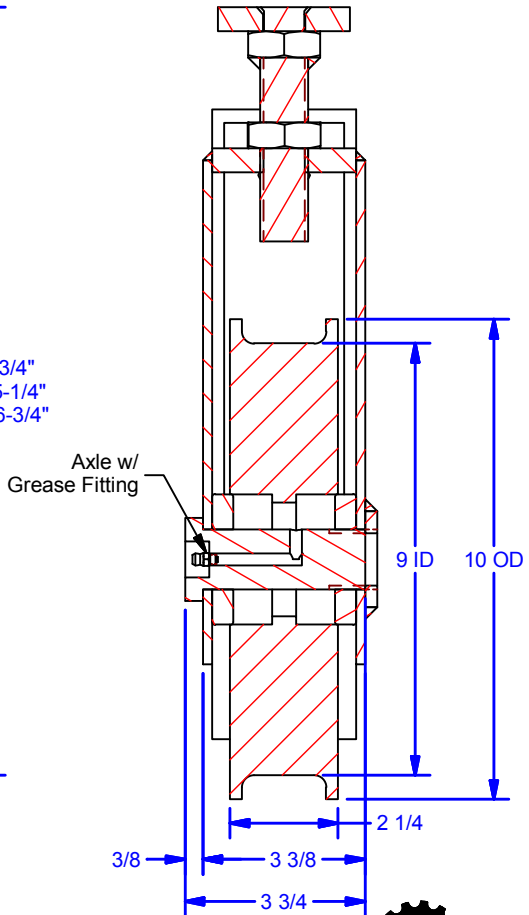
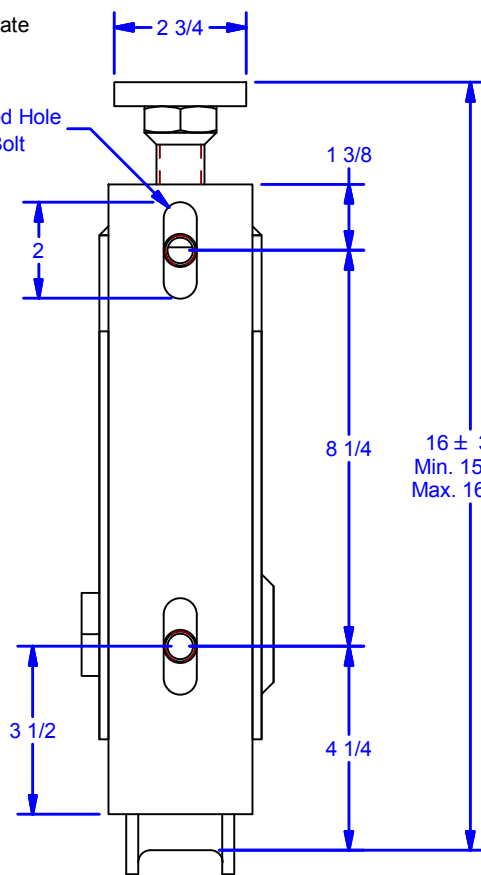
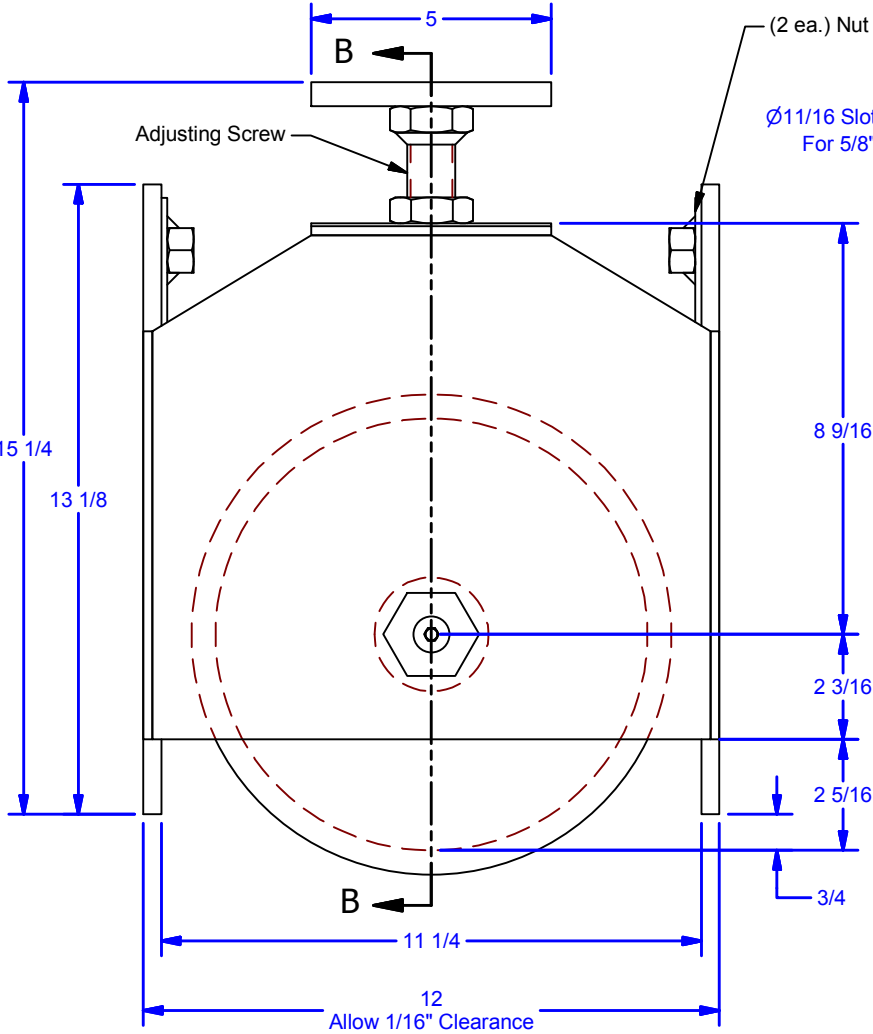
3

2

1



SECTION B-B



Allow 1/16" Clearance

Ratings @ 10RPM
 Radial: 9,825 lbs.
 Thrust: 3,685 lbs.

ALL DIMENSIONS IN INCHES

THE INFORMATION CONTAINED IN THIS DRAWING IS THE SOLE PROPERTY OF CROWN INDUSTRIAL. ANY REPRODUCTION IN PART OR AS A WHOLE WITHOUT THE WRITTEN PERMISSION OF CROWN INDUSTRIAL IS PROHIBITED.	ID #: 0002013	STOCK PART #: CR9
DESCRIPTION: 9" Bottom Roller for 20lb Rail for 4"	MATERIAL:	
FINISH: Ptd. Black	# PCS: 1	REV:



CROWN INDUSTRIAL
 So. San Francisco, Ca
 (650) 952-5150
 www.crown-industrial.com

DWG #: 0000946
 DRAWN: BCM 5/21/2015
 SHEET #5
 File: 0000946.idw

4

3

2

1

4

3

2

1