

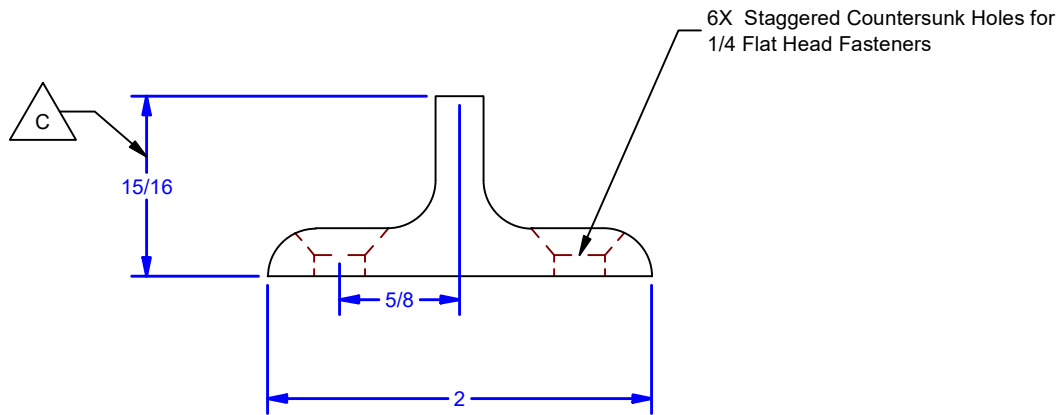
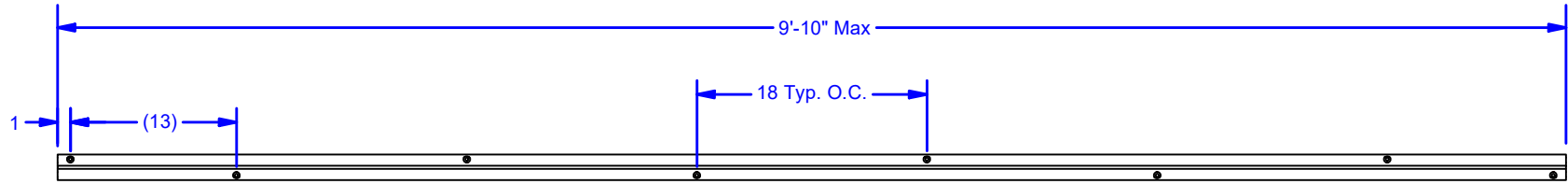
4

3

2

1

REVISIONS				
ZONE	REV	DESCRIPTION	DATE	BY
	C	Height of Track from 3/4", Track Length	6-7-21	BCM



ALL DIMENSIONS IN INCHES

THE INFORMATION CONTAINED IN THIS DRAWING IS THE SOLE PROPERTY OF CROWN INDUSTRIAL. ANY REPRODUCTION IN PART OR AS A WHOLE WITHOUT THE WRITTEN PERMISSION OF CROWN INDUSTRIAL IS PROHIBITED.	ID #:	0000644	STOCK PART #:	CR916-T
	MATERIAL:	Steel, Mild		
DESCRIPTION: #CR916-T Floor Track				
FINISH:	Ptd. Flat Black	# PCS:	REV:	C



**CROWN INDUSTRIAL**

So. San Francisco, Ca  
(650) 952-5150

www.crown-industrial.com

DWG #: CR916  
DRAWN:BCM 8/19/2009  
SHEET #1

File: 0000644.idw

4

3

2

1

D

D

C

C

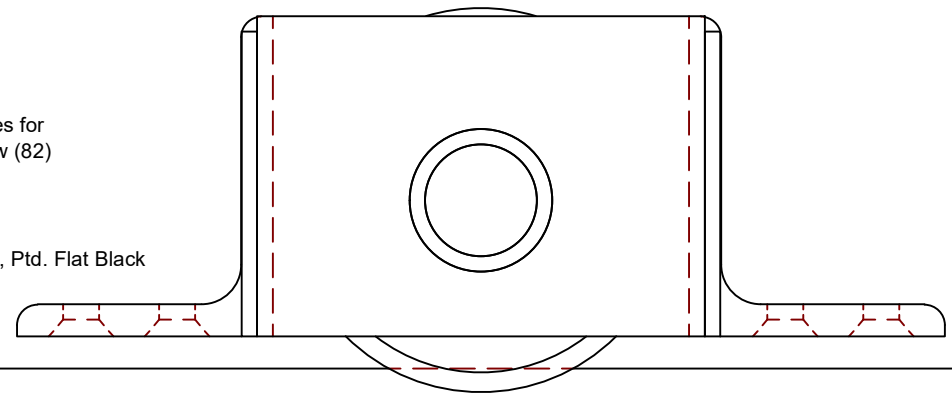
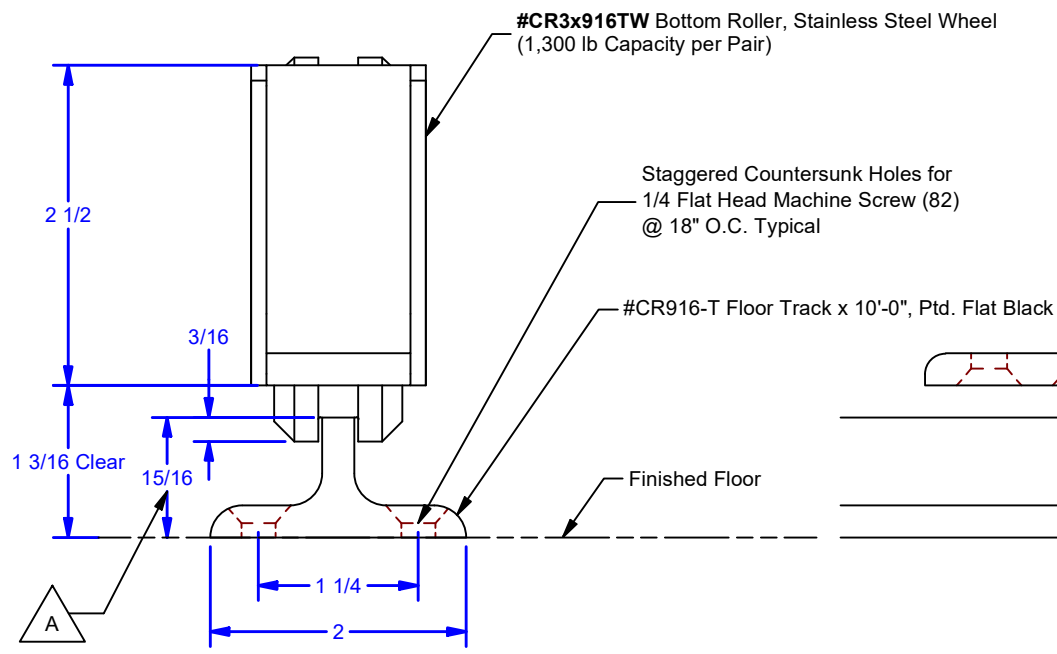
B

B

A

A

REVISIONS				
ZONE	REV	DESCRIPTION	DATE	BY
	A	Height of Floor Track	6-7-21	BCM



**ALL DIMENSIONS IN INCHES**

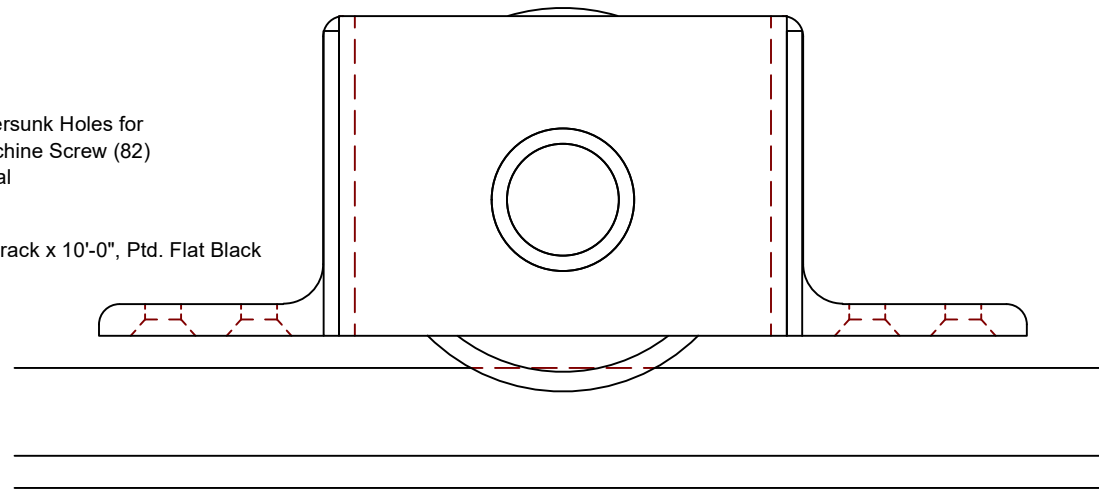
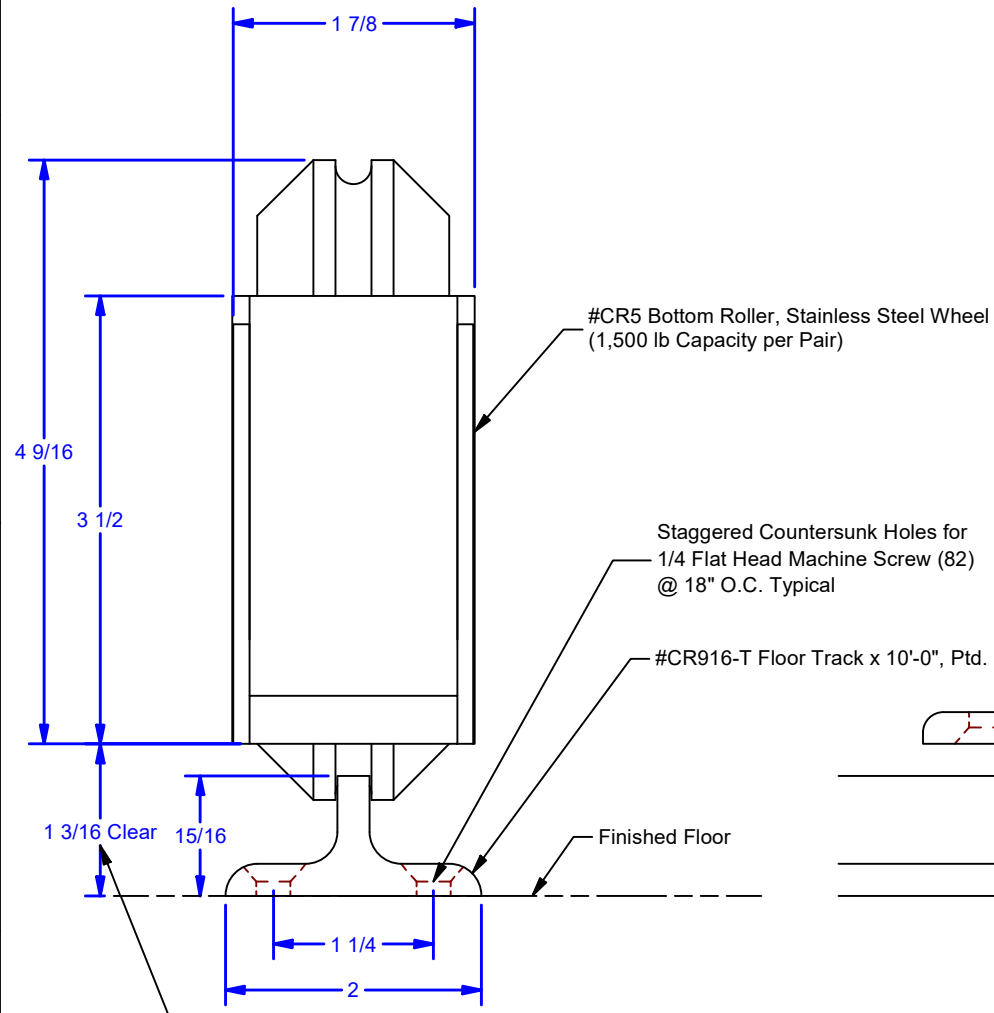
THE INFORMATION CONTAINED IN THIS DRAWING IS THE SOLE PROPERTY OF CROWN INDUSTRIAL. ANY REPRODUCTION IN PART OR AS A WHOLE WITHOUT THE WRITTEN PERMISSION OF CROWN INDUSTRIAL IS PROHIBITED.	ID #:	0002643	STOCK PART #:	CR3x916TW
	MATERIAL:			
DESCRIPTION: Bottom Roller & Floor Track				
FINISH:			# PCS:	REV: A



**CROWN INDUSTRIAL**  
 So. San Francisco, Ca  
 (650) 952-5150  
[www.crown-industrial.com](http://www.crown-industrial.com)

DWG #: 0001676  
 DRAWN:BCM 3/7/2018  
 SHEET #6  
 File: 0001676.idw

REVISIONS				
ZONE	REV	DESCRIPTION	DATE	BY
	A	Height of Floor Track	6-7-21	BCM



**ALL DIMENSIONS IN INCHES**

THE INFORMATION CONTAINED IN THIS DRAWING IS THE SOLE PROPERTY OF CROWN INDUSTRIAL. ANY REPRODUCTION IN PART OR AS A WHOLE WITHOUT THE WRITTEN PERMISSION OF CROWN INDUSTRIAL IS PROHIBITED.	ID #:	0002643	STOCK PART #:	CR5x916TW
	MATERIAL:			
DESCRIPTION:				
Bottom Roller & Floor Track				
FINISH:			# PCS:	REV:
				A



**CROWN INDUSTRIAL**  
 So. San Francisco, Ca  
 (650) 952-5150  
[www.crown-industrial.com](http://www.crown-industrial.com)

DWG #: 0002644  
 DRAWN:BCM 3/7/2018  
 SHEET #3  
 File: 0002644.idw