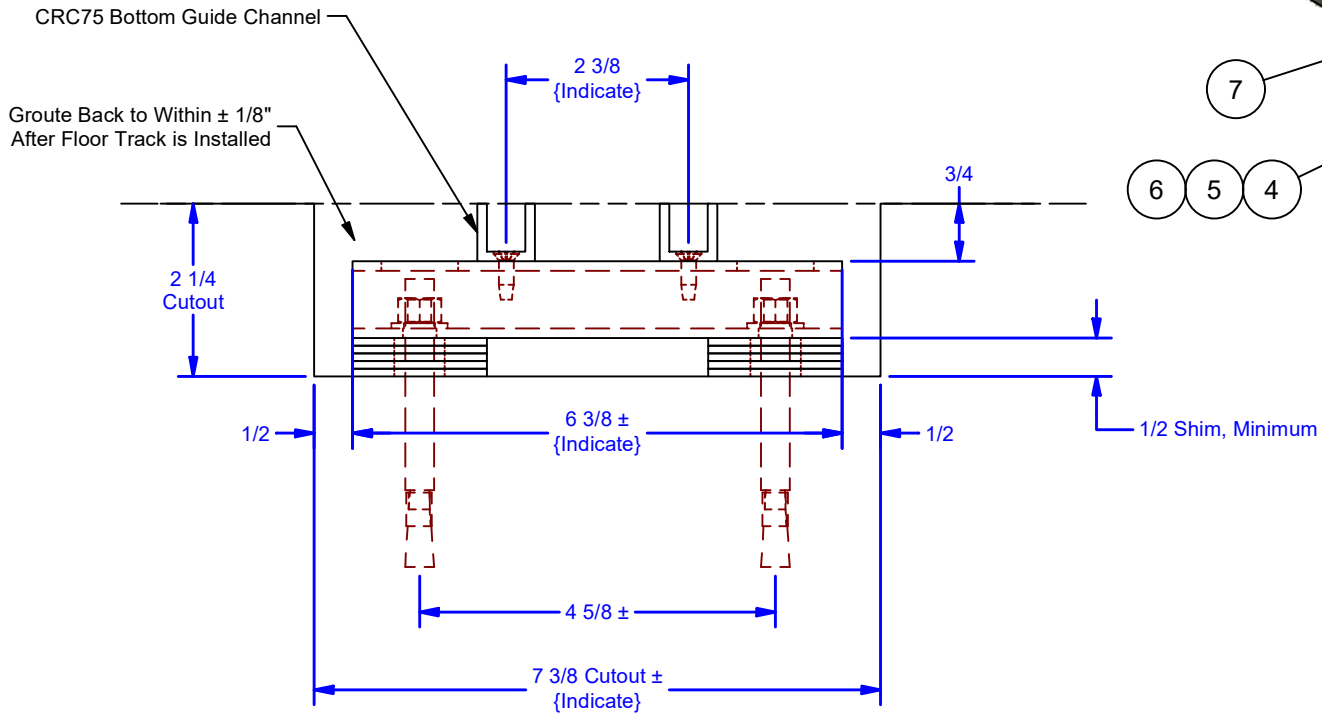
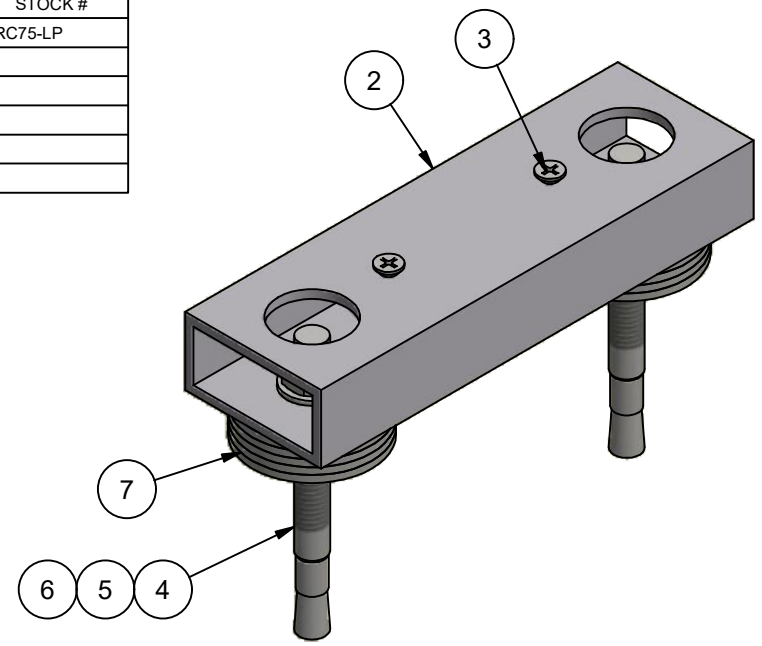


Parts List				
ITEM	QTY	PART #	DESCRIPTION	STOCK #
2	1	0000072-03	CRC75 Leveling Plate	CRC75-LP
3	2	FHP-Type F 10-24 UNC - 0.625 Zinc	Flat Head Phillips Type -F	
4	2	WA375-375	0.375 x 3.75 Wedge Concrete Anchor	
5	2	FW 3/8 - narrow - Type B zinc	Flat Washer-zinc	
6	2	HN 3/8 - 16 Zinc-5	Hex Nut - Grade 5, Zinc	
7	10	FW 5/8 - Regular - Type B zinc	Flat Washer-zinc	



Leveling Plate Assembly is located 24" On Center, Max

ALL DIMENSIONS IN INCHES

THE INFORMATION CONTAINED IN THIS DRAWING IS THE SOLE PROPERTY OF CROWN INDUSTRIAL. ANY REPRODUCTION IN PART OR AS A WHOLE WITHOUT THE WRITTEN PERMISSION OF CROWN INDUSTRIAL IS PROHIBITED.	ID #:	0003029-01	STOCK PART #:	CRC75-LP
	MATERIAL:	Aluminum		
DESCRIPTION:				
CRC75 Leveling Plate Assembly				
FINISH:		# PCS:	REV:	



CROWN INDUSTRIAL
So. San Francisco, Ca
(650) 952-5150
www.crown-industrial.com

DWG #: CRC-75
DRAWN:BCM 3/4/2020
SHEET #3
File: 0000891.idw