

4

3

2

1

D

D

C

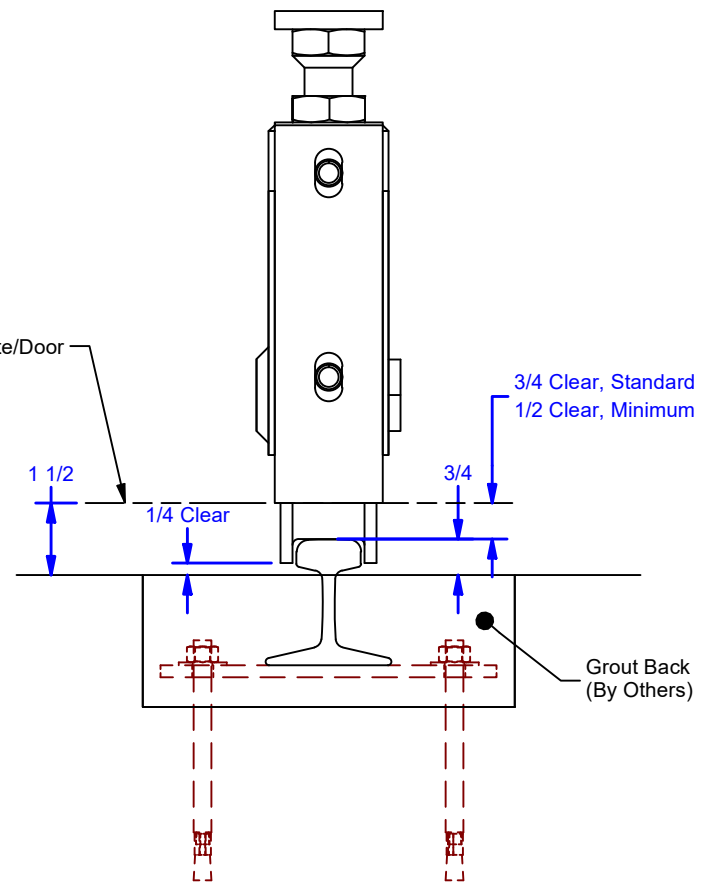
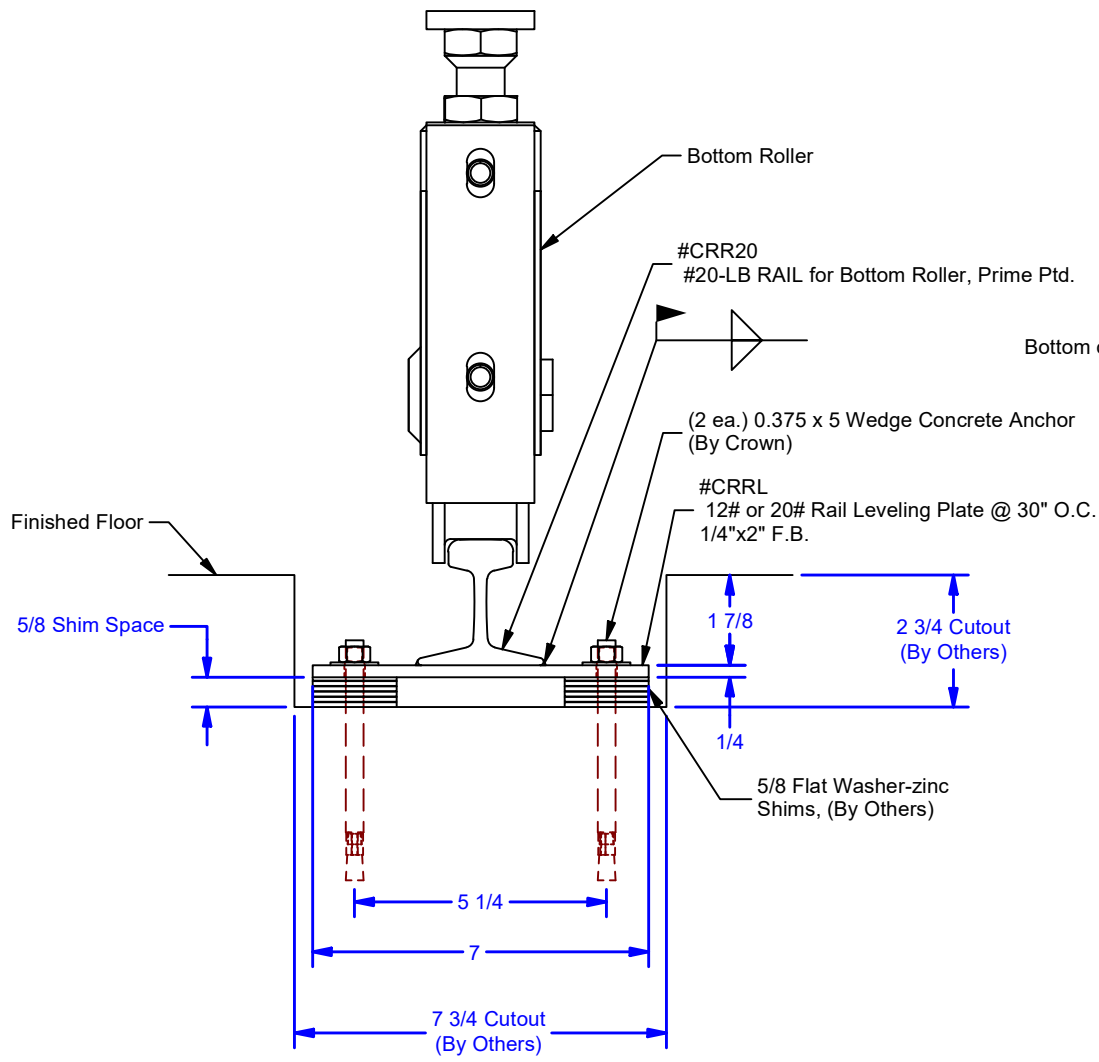
C

B

B

A

A



ALL DIMENSIONS IN INCHES

THE INFORMATION CONTAINED IN THIS DRAWING IS THE SOLE PROPERTY OF CROWN INDUSTRIAL. ANY REPRODUCTION IN PART OR AS A WHOLE WITHOUT THE WRITTEN PERMISSION OF CROWN INDUSTRIAL IS PROHIBITED.

PART #:	0002335	STOCK #:	CRRL
MATERIAL:	Welded Steel Mild		

DESCRIPTION:  
20# Rail Leveling Plate-Raised

FINISH:	Prime Ptd.	# PCS:	1	REV:	
---------	------------	--------	---	------	--



**CROWN INDUSTRIAL**  
So. San Francisco, Ca  
(650) 952-5150  
www.crown-industrial.com

DWG #: CRRL  
DRAWN:BCM 9/16/2016  
SHEET #1  
File: 0000823.idw

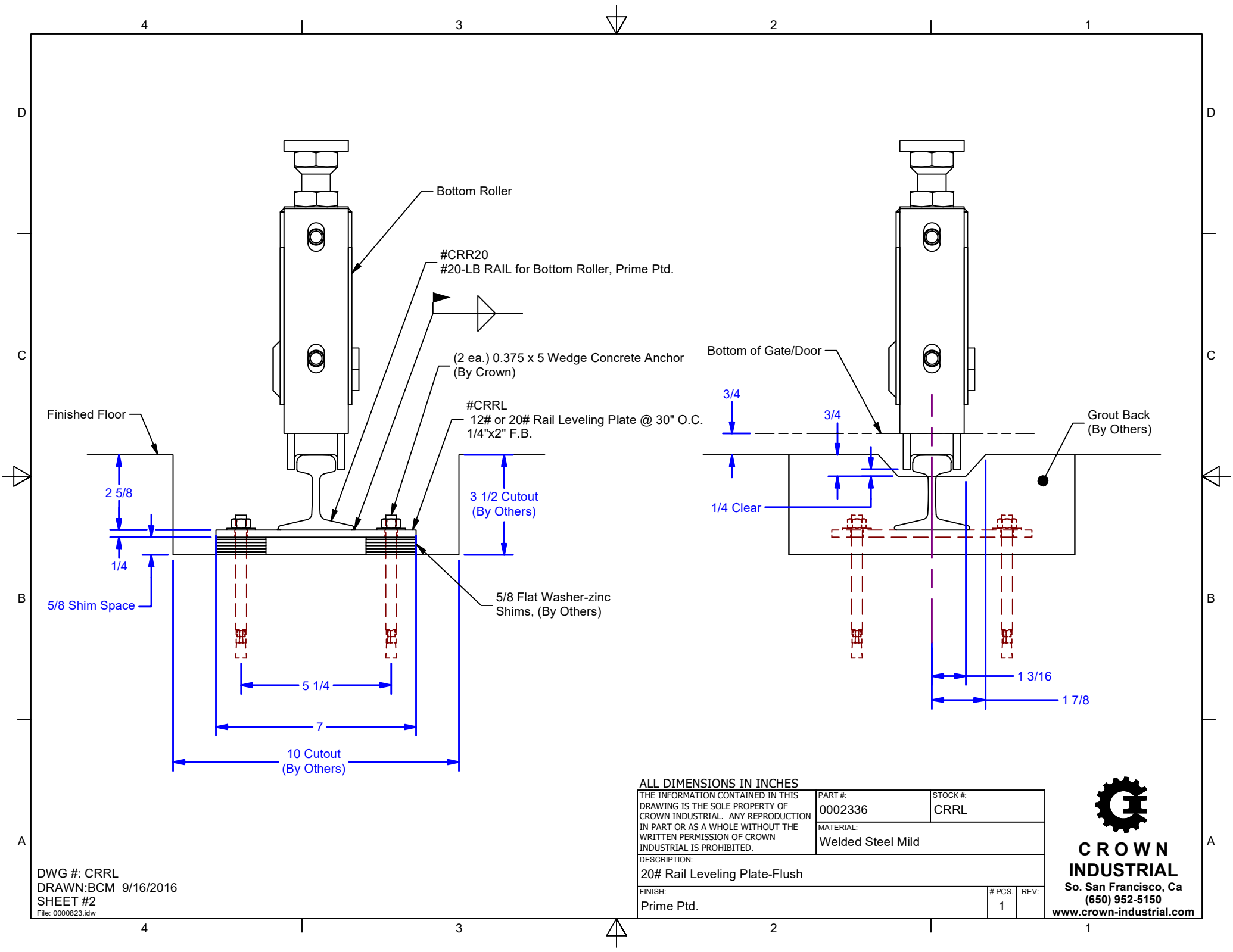
4

3

2

1





DWG #: CRRL  
 DRAWN: BCM 9/16/2016  
 SHEET #2  
 File: 0000823.idw

**ALL DIMENSIONS IN INCHES**

THE INFORMATION CONTAINED IN THIS DRAWING IS THE SOLE PROPERTY OF CROWN INDUSTRIAL. ANY REPRODUCTION IN PART OR AS A WHOLE WITHOUT THE WRITTEN PERMISSION OF CROWN INDUSTRIAL IS PROHIBITED.

PART #: 0002336  
 MATERIAL: Welded Steel Mild

STOCK #: CRRL

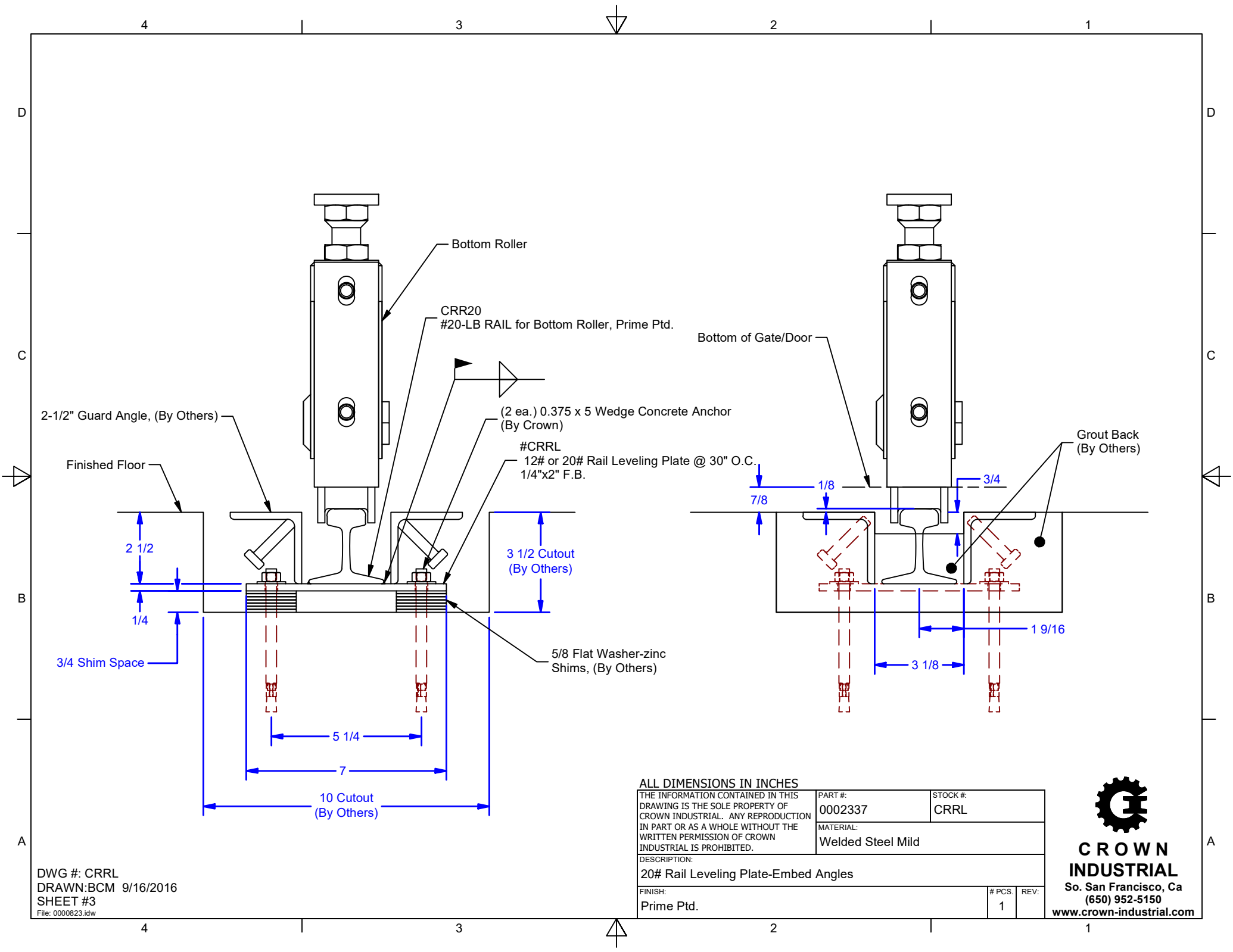
DESCRIPTION:  
 20# Rail Leveling Plate-Flush

FINISH: Prime Ptd.

# PCS:	1
REV:	



**CROWN INDUSTRIAL**  
 So. San Francisco, Ca  
 (650) 952-5150  
 www.crown-industrial.com



DWG #: CRRL  
 DRAWN:BCM 9/16/2016  
 SHEET #3  
 File: 0000823.idw

**ALL DIMENSIONS IN INCHES**

THE INFORMATION CONTAINED IN THIS DRAWING IS THE SOLE PROPERTY OF CROWN INDUSTRIAL. ANY REPRODUCTION IN PART OR AS A WHOLE WITHOUT THE WRITTEN PERMISSION OF CROWN INDUSTRIAL IS PROHIBITED.

PART #: 0002337	STOCK #: CRRL
MATERIAL: Welded Steel Mild	

DESCRIPTION:  
 20# Rail Leveling Plate-Embed Angles

FINISH: Prime Ptd.	# PCS: 1	REV:
-----------------------	-------------	------



**CROWN INDUSTRIAL**  
 So. San Francisco, Ca  
 (650) 952-5150  
 www.crown-industrial.com

4

3

2

1

D

D

C

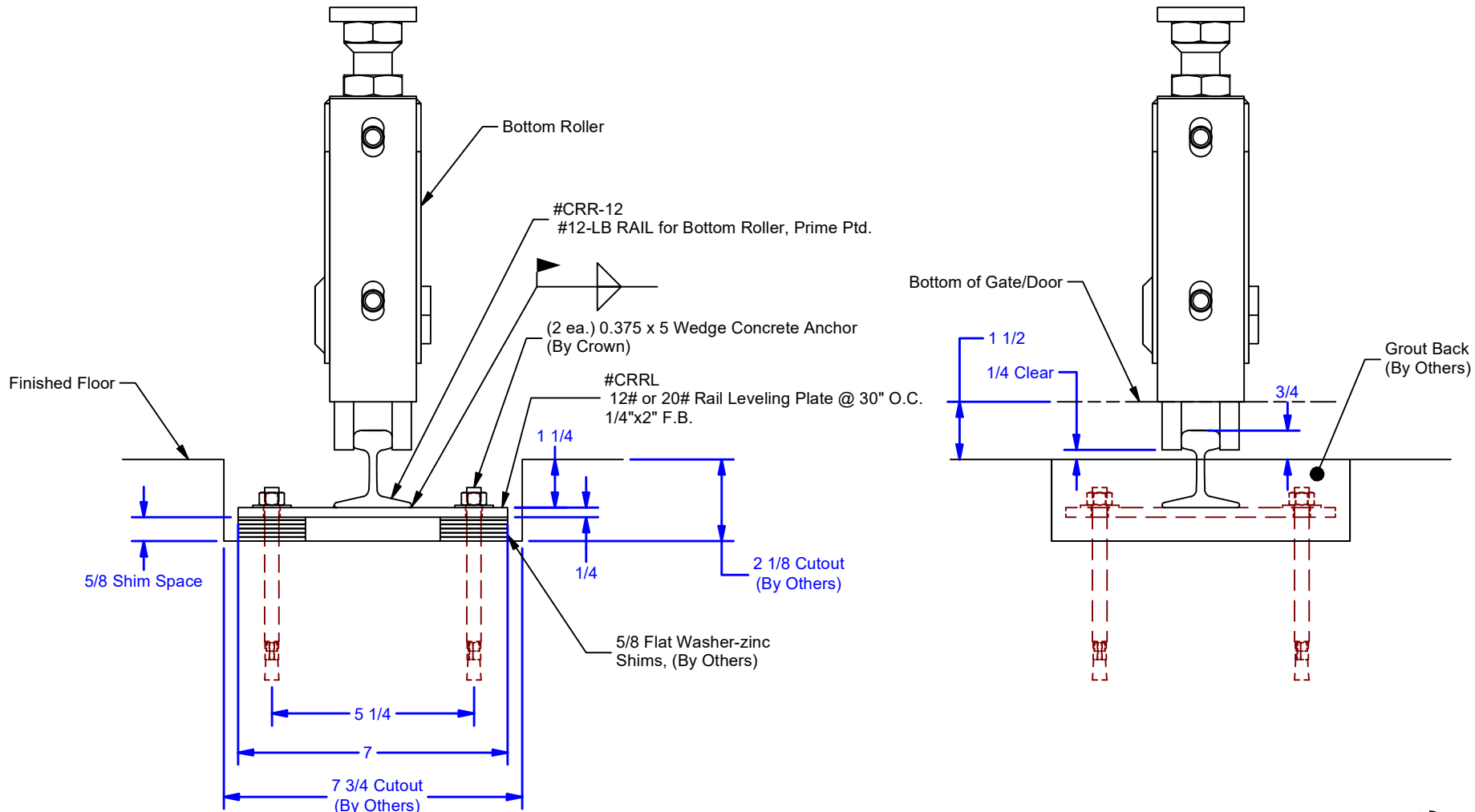
C

B

B

A

A



DWG #: CRRL  
 DRAWN:BCM 9/16/2016  
 SHEET #4  
 File: 0000823.idw

**ALL DIMENSIONS IN INCHES**

THE INFORMATION CONTAINED IN THIS DRAWING IS THE SOLE PROPERTY OF CROWN INDUSTRIAL. ANY REPRODUCTION IN PART OR AS A WHOLE WITHOUT THE WRITTEN PERMISSION OF CROWN INDUSTRIAL IS PROHIBITED.	PART #: 0002340	STOCK #: CRRL
	MATERIAL: Welded Steel Mild	
DESCRIPTION: 12# Rail Leveling Plate-Raised		
FINISH: Prime Ptd.	# PCS: 1	REV:



**CROWN INDUSTRIAL**  
 So. San Francisco, Ca  
 (650) 952-5150  
 www.crown-industrial.com

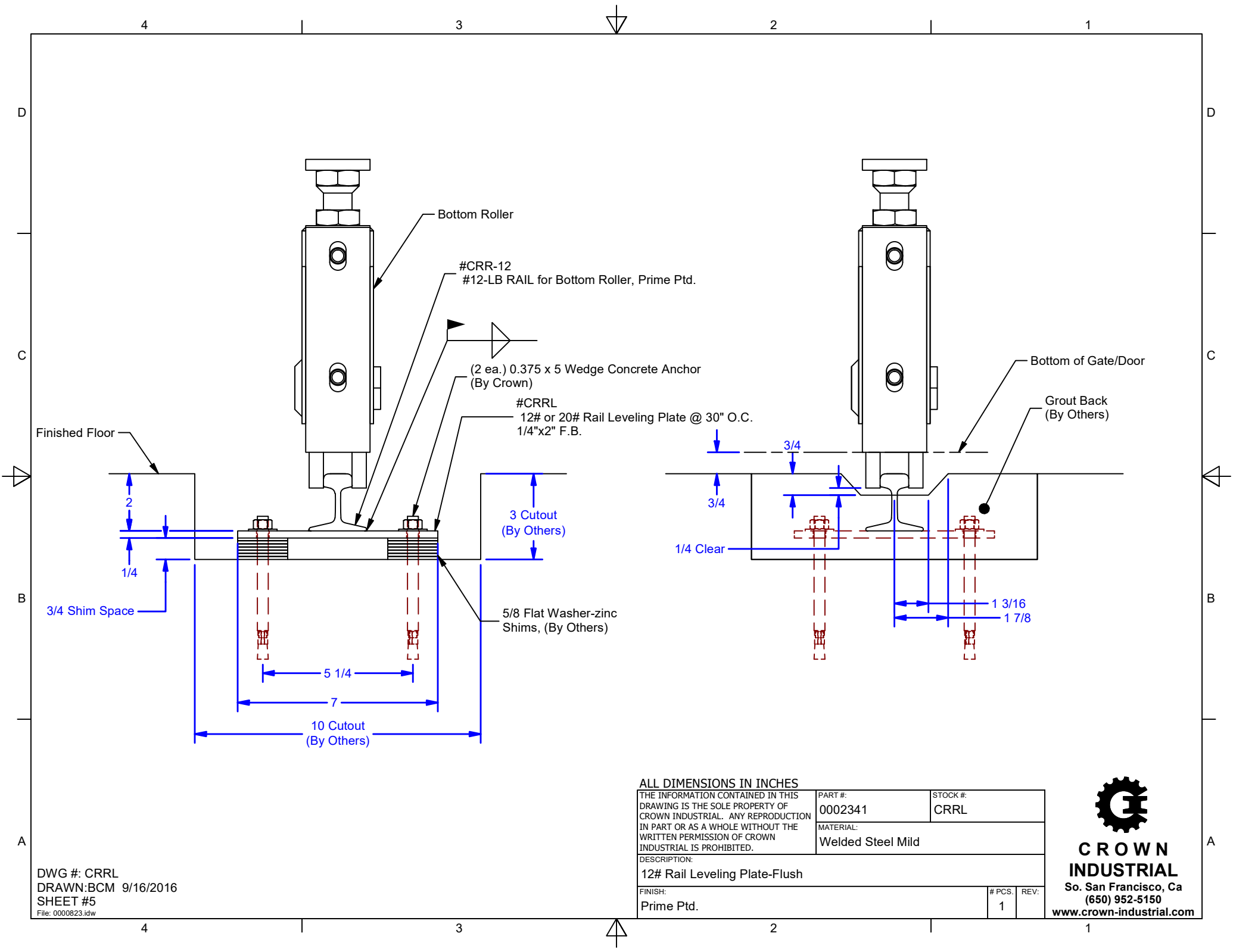
4

3

2

1





DWG #: CRRL  
 DRAWN: BCM 9/16/2016  
 SHEET #5  
 File: 0000823.idw

**ALL DIMENSIONS IN INCHES**

THE INFORMATION CONTAINED IN THIS DRAWING IS THE SOLE PROPERTY OF CROWN INDUSTRIAL. ANY REPRODUCTION IN PART OR AS A WHOLE WITHOUT THE WRITTEN PERMISSION OF CROWN INDUSTRIAL IS PROHIBITED.

PART #: 0002341  
 MATERIAL: Welded Steel Mild

STOCK #: CRRL

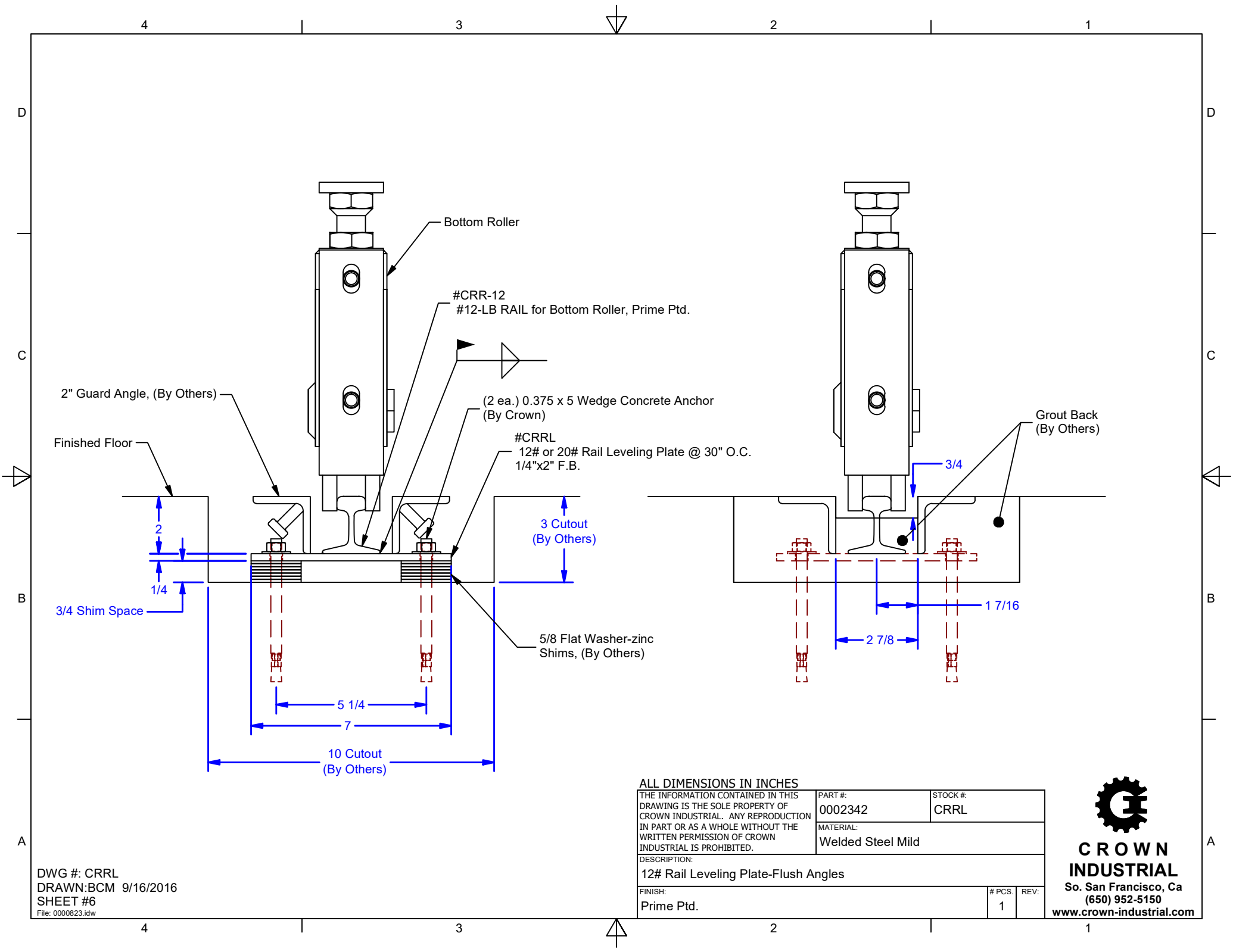
DESCRIPTION:  
 12# Rail Leveling Plate-Flush

FINISH:  
 Prime Ptd.

# PCS	REV:
1	



**CROWN INDUSTRIAL**  
 So. San Francisco, Ca  
 (650) 952-5150  
 www.crown-industrial.com



DWG #: CRRL  
 DRAWN:BCM 9/16/2016  
 SHEET #6  
 File: 0000823.idw

ALL DIMENSIONS IN INCHES

THE INFORMATION CONTAINED IN THIS DRAWING IS THE SOLE PROPERTY OF CROWN INDUSTRIAL. ANY REPRODUCTION IN PART OR AS A WHOLE WITHOUT THE WRITTEN PERMISSION OF CROWN INDUSTRIAL IS PROHIBITED.

PART #:  
0002342

MATERIAL:  
Welded Steel Mild

STOCK #:  
CRRL

DESCRIPTION:  
12# Rail Leveling Plate-Flush Angles

FINISH:  
Prime Ptd.

# PCS: 1

REV:



**CROWN INDUSTRIAL**

So. San Francisco, Ca  
 (650) 952-5150

www.crown-industrial.com

4

3

2

1