

4

3

2

1

D

D

C

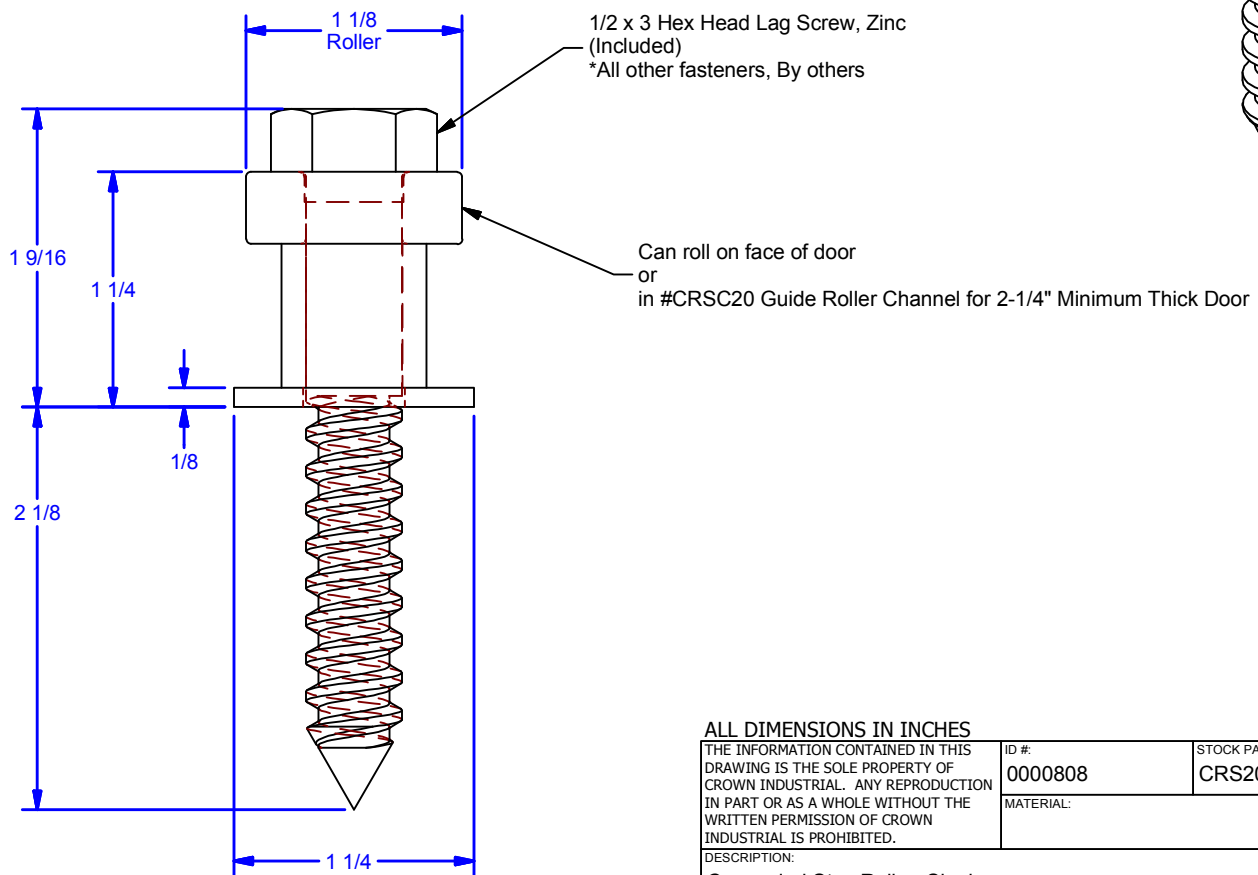
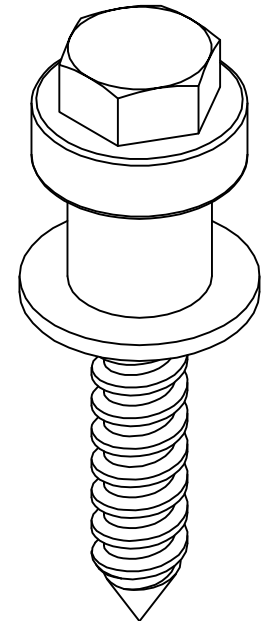
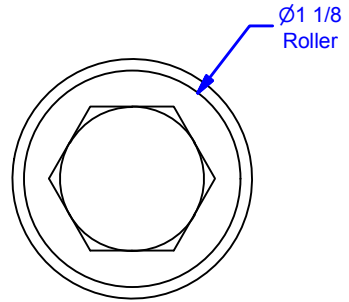
C

B

B

A

A



ALL DIMENSIONS IN INCHES

THE INFORMATION CONTAINED IN THIS DRAWING IS THE SOLE PROPERTY OF CROWN INDUSTRIAL. ANY REPRODUCTION IN PART OR AS A WHOLE WITHOUT THE WRITTEN PERMISSION OF CROWN INDUSTRIAL IS PROHIBITED.	ID #:	0000808	STOCK PART #:	CRS20S
	MATERIAL:			
DESCRIPTION: Concealed Stay Roller, Single				
FINISH:			# PCS:	REV:
			1	



**CROWN INDUSTRIAL**  
 So. San Francisco, Ca  
 (650) 952-5150  
 www.crown-industrial.com

DWG #: CRS20S  
 DRAWN:BCM 6/14/2010  
 SHEET #1  
 File: 0000808.idw

4

3

2

1



4

3

2

1

D

D

C

C

B

B

A

A

Door

1 1/4 Min. Door Lap  
2" Recommended Lap

5/8

Door Slide This Direction

**Plan View**

Edge of Opening

2 1/4  
Min. Thick Door

1 1/2

#10 Flat Head Screw @ 16" Centers  
(By Others)

#CRSC-20  
Concealed Aluminum  
Stay Roller Channel

1 1/2

3/8 Clear

Finished Floor

Back Edge of Door  
in Closed Position

**Elevation View**

**End View**

**ALL DIMENSIONS IN INCHES**

THE INFORMATION CONTAINED IN THIS DRAWING IS THE SOLE PROPERTY OF CROWN INDUSTRIAL. ANY REPRODUCTION IN PART OR AS A WHOLE WITHOUT THE WRITTEN PERMISSION OF CROWN INDUSTRIAL IS PROHIBITED.

ID #: 0002386

STOCK PART #: CRS20S

MATERIAL:

DESCRIPTION:

Concealed Stay Roller, Single

FINISH:

# PCS: 1

REV:

DWG #: CRS20S  
DRAWN:BCM 12/15/2016  
SHEET #2  
File: 0000808.idw



**CROWN INDUSTRIAL**

So. San Francisco, Ca  
(650) 952-5150

www.crown-industrial.com

4

3

2

1

