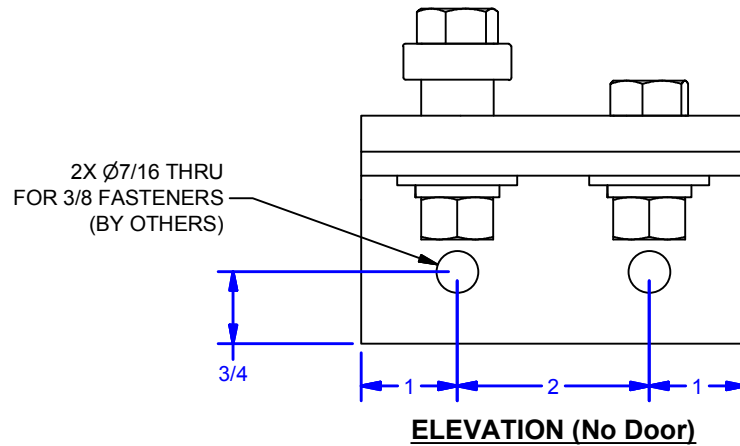
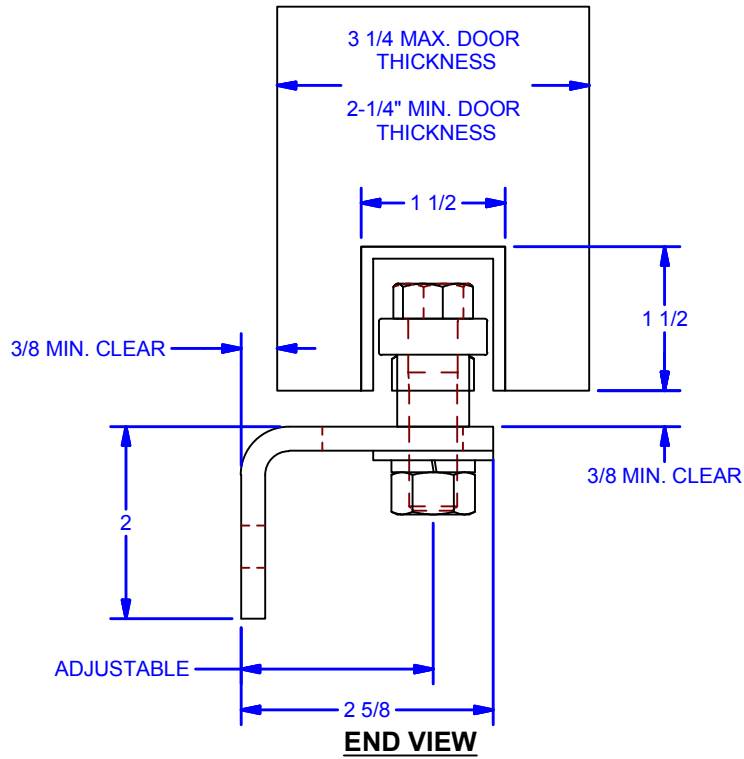


PLAN VIEW



WITH ORDER SPECIFY DOOR THICKNESS

ALL DIMENSIONS IN INCHES

THE INFORMATION CONTAINED IN THIS DRAWING IS THE SOLE PROPERTY OF CROWN INDUSTRIAL. ANY REPRODUCTION IN PART OR AS A WHOLE WITHOUT THE WRITTEN PERMISSION OF CROWN INDUSTRIAL IS PROHIBITED.

ID #: 0000887

STOCK PART #: CRS20x11

MATERIAL:

DESCRIPTION:

Wall Mounted Single Concealed Stay Roller for 2-1/4" Min. Thick Door

FINISH: Clear Zinc

PCS: 1
REV:

DWG #: 0000888
DRAWN: BCM 10/12/2010
SHEET #1
File: 0000886.idw

CROWN INDUSTRIAL
So. San Francisco, Ca
(650) 952-5150
www.crown-industrial.com