

4

3

2

1

D

D

C

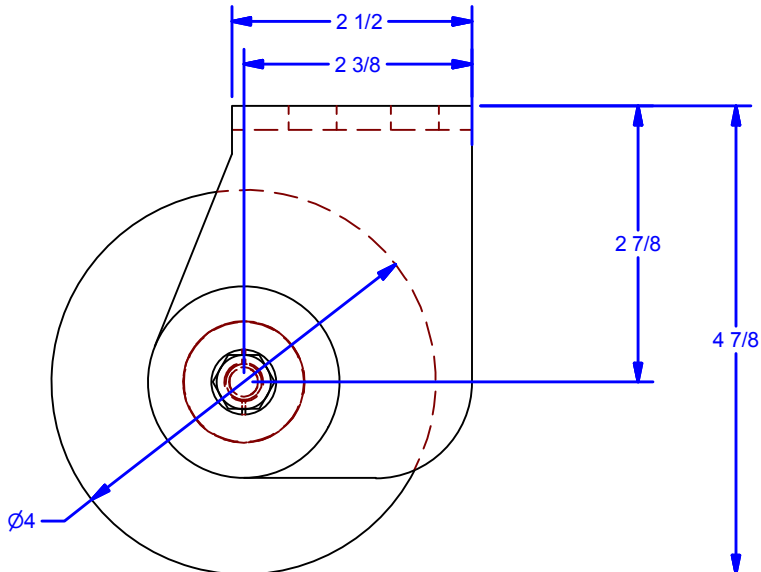
C

B

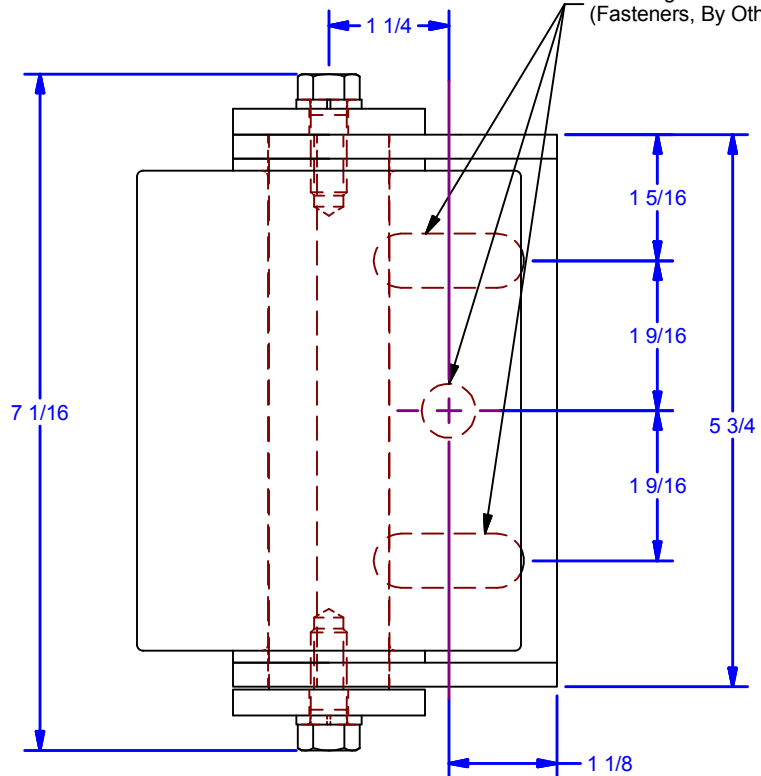
B

A

A



Mounting Holes For 1/2" Fasteners  
(Fasteners, By Others)



**ALL DIMENSIONS IN INCHES**

THE INFORMATION CONTAINED IN THIS DRAWING IS THE SOLE PROPERTY OF CROWN INDUSTRIAL. ANY REPRODUCTION IN PART OR AS A WHOLE WITHOUT THE WRITTEN PERMISSION OF CROWN INDUSTRIAL IS PROHIBITED.

DESCRIPTION:  
Top Guide Roller Assembly, Offset

FINISH:  
Clear Zinc

PART #:  
0001506

STOCK #:  
DGR-4-2

# PCS:  
1

REV:  
1

DWG #: DGR-4-2  
DRAWN:BCM 8/23/2013  
SHEET #1  
File: 0001504.idw

**CROWN INDUSTRIAL**  
So. San Francisco, Ca  
(650) 952-5150  
www.crown-industrial.com

4

3

2

1



4

3

2

1

D

D

C

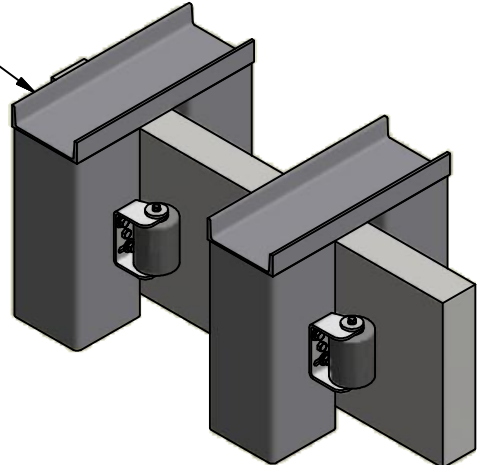
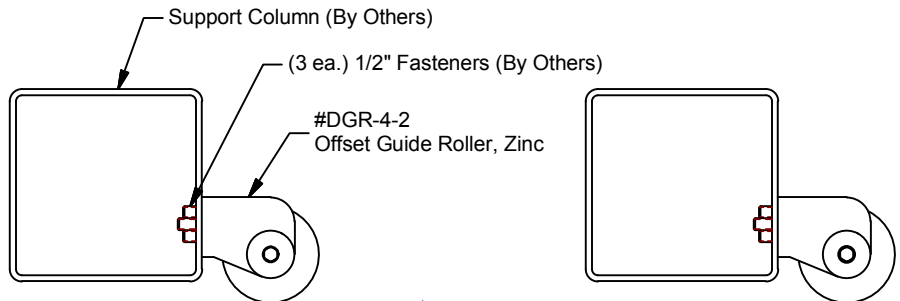
C

B

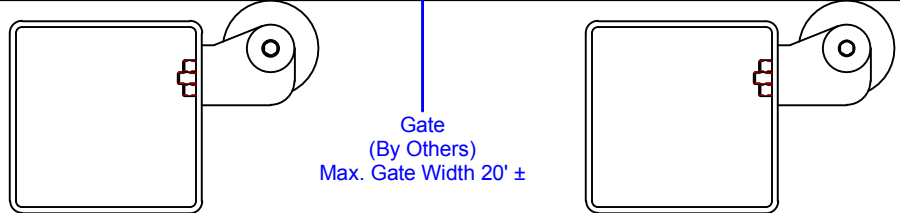
B

A

A



Top Bracing, By Others



Gate (By Others) Max. Gate Width 20' ±

As Required (7'-0" min or 25% of Gate which ever is larger)

**Plan View**

**ALL DIMENSIONS IN INCHES**

THE INFORMATION CONTAINED IN THIS DRAWING IS THE SOLE PROPERTY OF CROWN INDUSTRIAL. ANY REPRODUCTION IN PART OR AS A WHOLE WITHOUT THE WRITTEN PERMISSION OF CROWN INDUSTRIAL IS PROHIBITED.	PART #:	STOCK #:
	0002496	
MATERIAL:		
DESCRIPTION:		
DGR-4-2 Top Guide Roller Application		
FINISH:	# PCS:	REV:
	1	



**CROWN INDUSTRIAL**  
 So. San Francisco, Ca  
 (650) 952-5150  
[www.crown-industrial.com](http://www.crown-industrial.com)

DWG #: DGR-4-2  
 DRAWN:BCM 6/15/2017  
 SHEET #2  
 File: 0001504.idw

4

3

2

1

