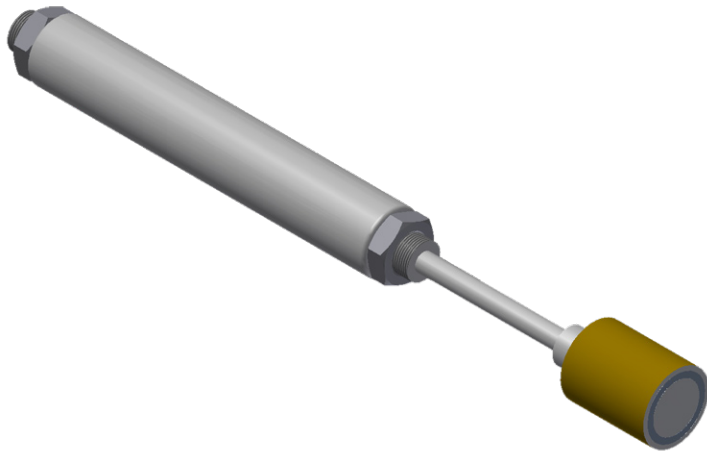
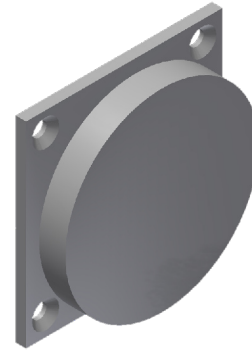




## Piston Damper-Magnet Reset



#PD-Piston Damper w/ Magnetic End



#CP-Counter Plate  
(attaches to door)

Part #	Stroke (in)	Max. Damping Force (lbf ft)	Max. Energy per Stroke (lbf ft)	Cylinder Length (in)
PD2.00	1.97	1,170	113.59	5.12
PD2.75	2.76	990	113.59	6.42
PD4.75	4.72	585	109.9	8.66
PD7.87	7.87	540	109.9	12.95

### General Specifications:

- Impact Speed: 3.15 to 78.74 inch/s.
- Max. Impact Load: 6,600 lbs.
- Max. Strokes per minute: 10
- Operating Temperature: 32 to 140 F  
(Special: -22 to 176 F)

**Purpose:** Smooth the movements of a sliding door, or to slow a sliding door down during its initial opening and closing operation.

**Function:** When opening the door the magnet on the end of the piston rod adheres to the #CP Counter Plate that is attached to the end of the door. The piston extends at a controlled rate until its completely extracted, at which point the door detaches and can be moved at a faster rate. This damper does not contain an internal return spring.

- Damping force can be adjusted by pulling and turning the piston rod.

Available Damping Types:

- Constant: Uniform damping during the entire travel of the rod.