

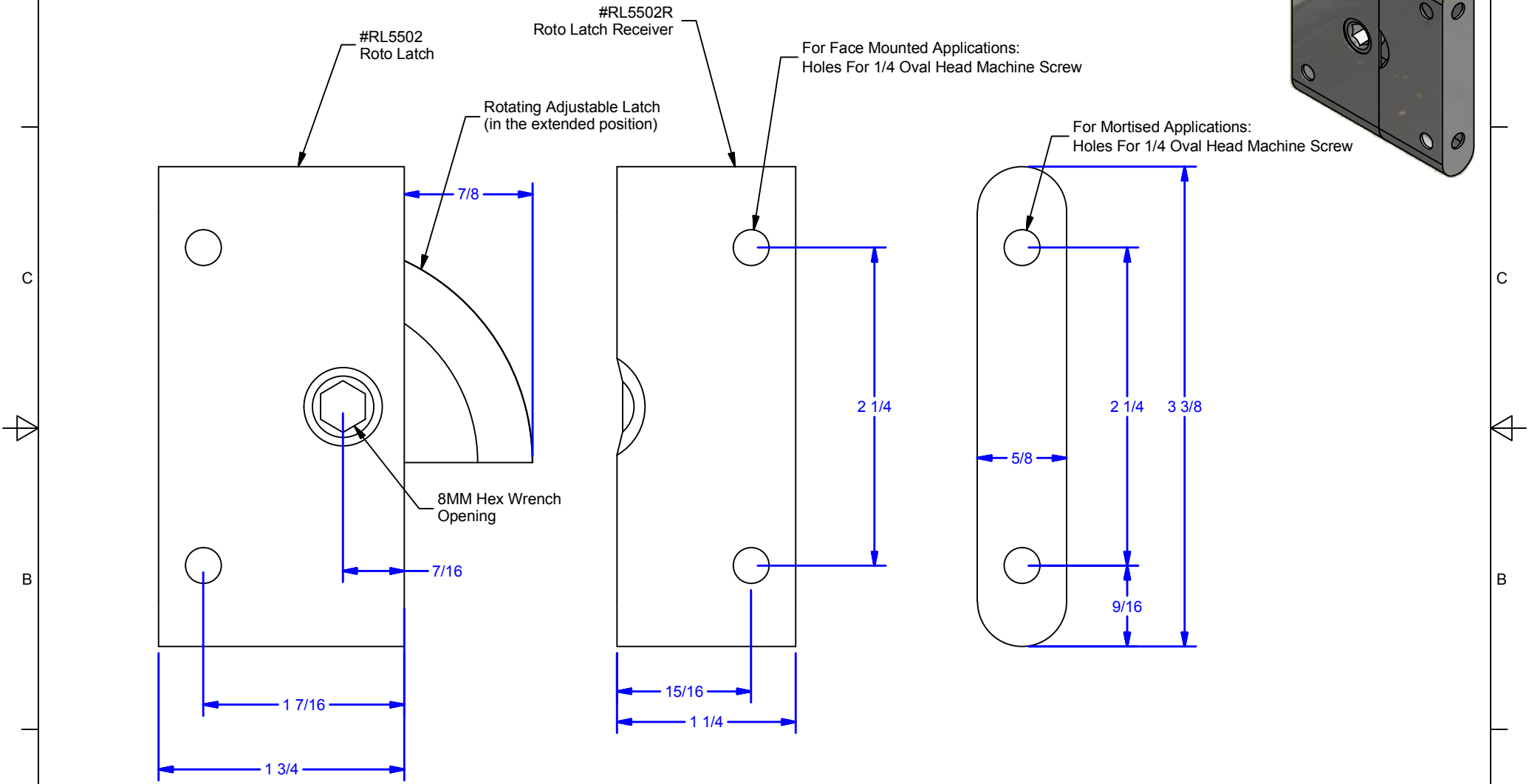
4 3 2 1

D

C

B

A



Progressively draws two door panels together.
Provides air & water tight seals.
Adjustable to allow for manufacturing tolerances and gasket shrinkage.
Latch can be mounted to face of door or mortised.

DWG #: 0002104
DRAWN:BCM 9/18/2015
SHEET #1
File: 0002104.idw

ALL DIMENSIONS IN INCHES

THE INFORMATION CONTAINED IN THIS DRAWING IS THE SOLE PROPERTY OF CROWN INDUSTRIAL. ANY REPRODUCTION IN PART OR AS A WHOLE WITHOUT THE WRITTEN PERMISSION OF CROWN INDUSTRIAL IS PROHIBITED.	ID #:	0002103	STOCK PART #:	RL5502
	MATERIAL:			
DESCRIPTION:				
Roto Latch Assembly				
FINISH:			# PCS:	REV:
Clear Zinc			1	



CROWN INDUSTRIAL
So. San Francisco, Ca
(650) 952-5150
www.crown-industrial.com

4 3 2 1