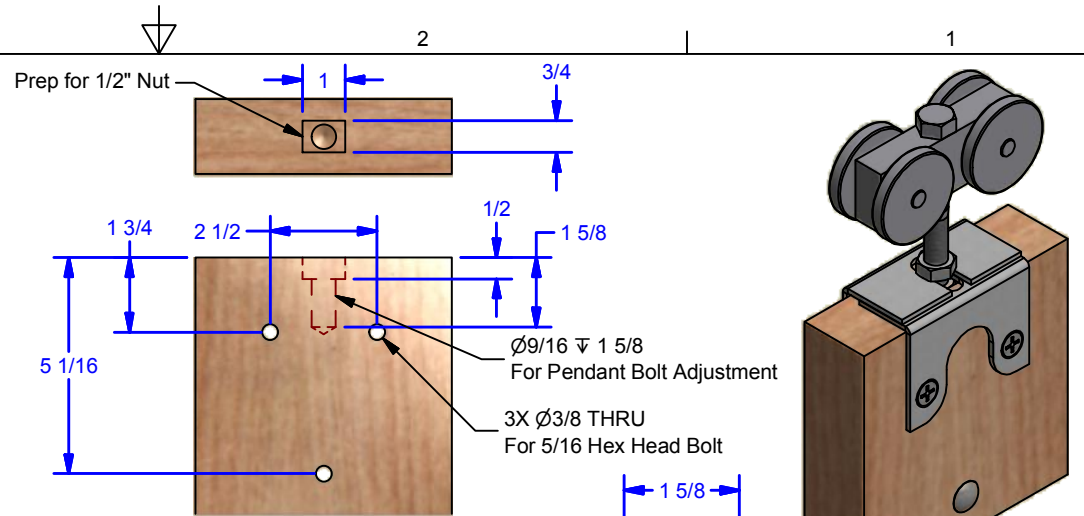
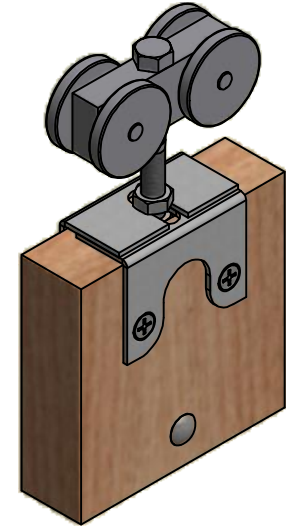


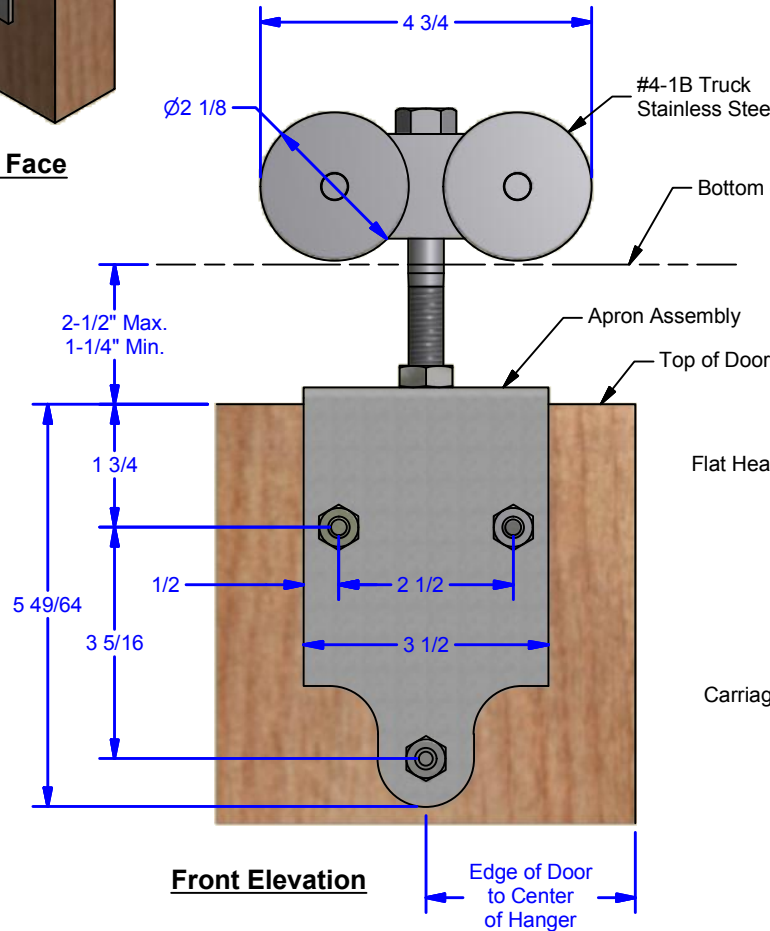
**Outside Face**



**Door Prep**



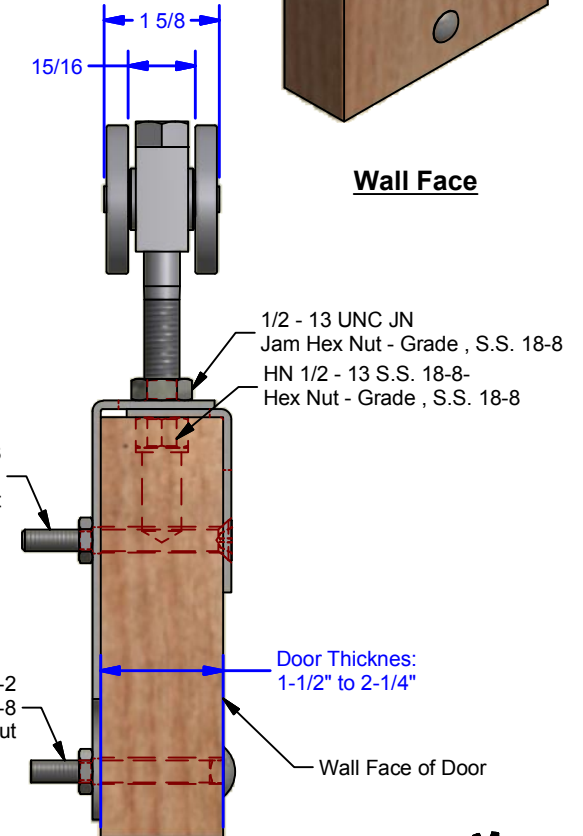
**Wall Face**



**Front Elevation**

(FHPHMS-FT) 5/16-18 x 3 S.S. 18-8  
Flat Head Phillips Machine Screw-Fully Threaded w/ Nut

CB-FT 5/16-18 UNC - 2.75 S.S. 18-8-2  
Carriage Bolt Fully Threaded - Grade 2, S.S. 18-8 w/ Nut



**ALL DIMENSIONS IN INCHES**

THE INFORMATION CONTAINED IN THIS DRAWING IS THE SOLE PROPERTY OF CROWN INDUSTRIAL. ANY REPRODUCTION IN PART OR AS A WHOLE WITHOUT THE WRITTEN PERMISSION OF CROWN INDUSTRIAL IS PROHIBITED.

ID #: 0002027  
MATERIAL: 304 Stainless Steel

STOCK PART #: 4S-2B

DESCRIPTION:  
Stainless Steel Ball Bearing Hanger for 1-1/2" to 2-1/4" Thick Door

FINISH:  
#4 Brushed Finish

# PCS: 1  
REV:



**CROWN INDUSTRIAL**

So. San Francisco, Ca  
(650) 952-5150  
www.crown-industrial.com