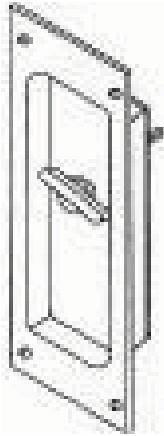


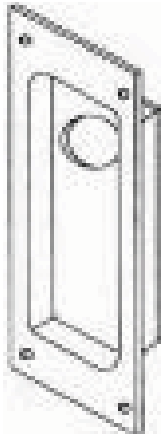


## S2002 Solid Brass Pulls

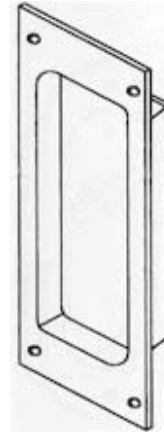
### STYLES:



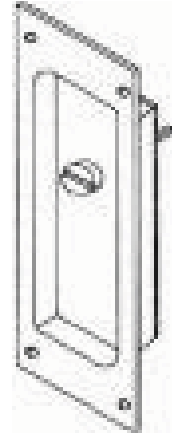
S2002T  
Thumb Turn



S2002C  
Cylinder



S2002B  
Blank



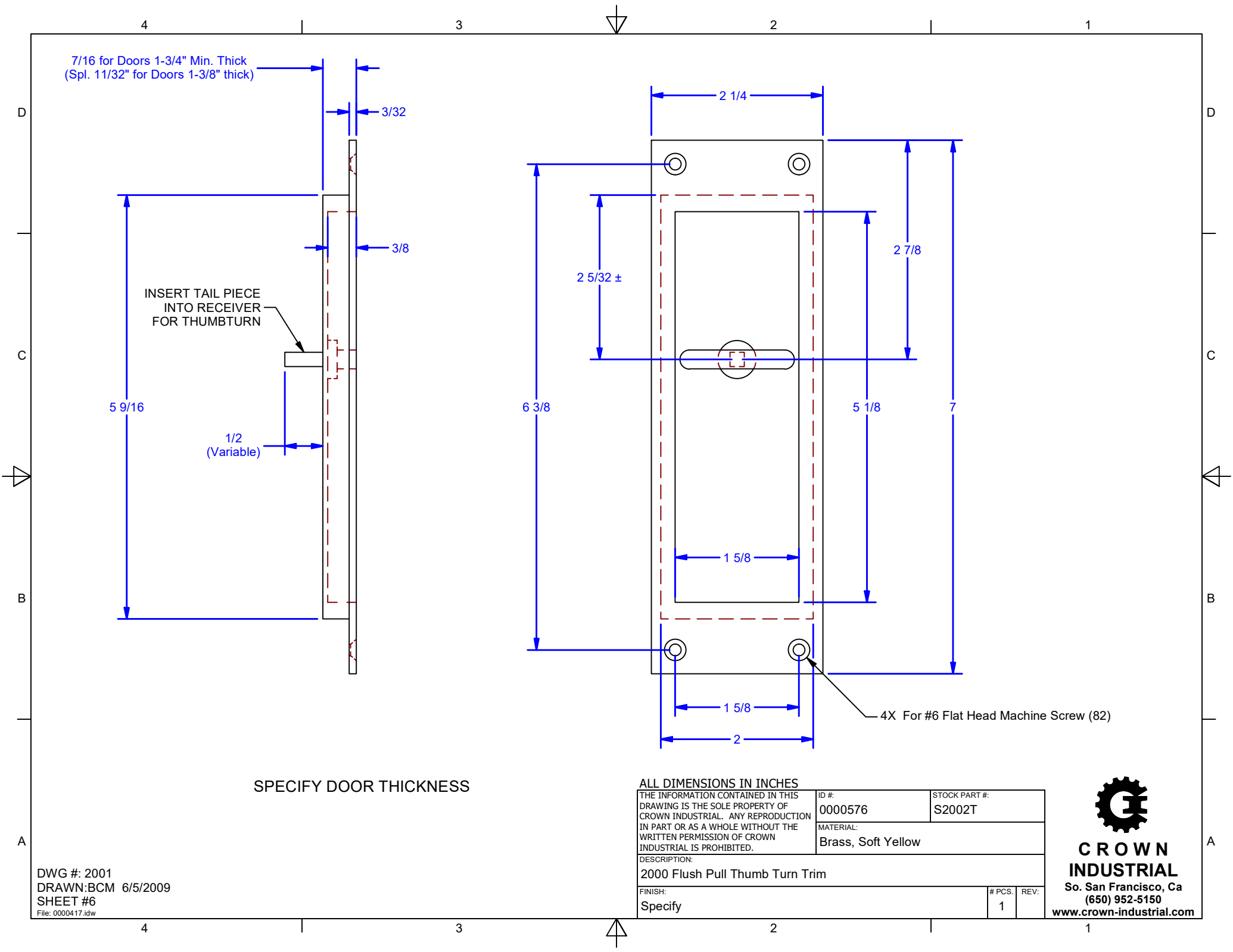
S2002E  
Emergency  
Egress

### Function:

- Solid brass pulls designed to be used with
  - » #2000 Pocket Door Pulls
  - » #2001 Mortise Deadbolt locks
  - » #2002 Pocket Door Lock and pulls
- For doors 1-3/8" or thicker. Specify door thickness upon ordering.

**Finish:** Stock available in US26D





7/16 for Doors 1-3/4" Min. Thick  
(Spl. 11/32" for Doors 1-3/8" thick)

INSERT TAIL PIECE  
INTO RECEIVER  
FOR THUMBTURN

SPECIFY DOOR THICKNESS

ALL DIMENSIONS IN INCHES

THE INFORMATION CONTAINED IN THIS DRAWING IS THE SOLE PROPERTY OF CROWN INDUSTRIAL. ANY REPRODUCTION IN PART OR AS A WHOLE WITHOUT THE WRITTEN PERMISSION OF CROWN INDUSTRIAL IS PROHIBITED.	ID #:	0000576	STOCK PART #:	S2002T
	MATERIAL:	Brass, Soft Yellow		
DESCRIPTION: 2000 Flush Pull Thumb Turn Trim				
FINISH:	Specify	# PCS:	1	REV:



**CROWN INDUSTRIAL**  
So. San Francisco, Ca  
(650) 952-5150  
www.crown-industrial.com

DWG #: 2001  
DRAWN: BCM 6/5/2009  
SHEET #6  
File: 0000417.idw