



# CROWN INDUSTRIAL OPERATORS-SAFETY EDGES

Door Hardware, Doors, Operators and Complete Systems

Manufacturer of Aut-o-doR® products

## SE-M120 SINGLE SLIDING / SE-M120B BI-PARTING WIRELESS SAFETY EDGE PACKAGE

A self monitored pressure sensitive safety edge safety device that can be mounted on the lead and/or trailing edge of a door or gate. This transmitter monitors the presense and function of 10k safety edge and transmits a wireless signal to the operator controls. The receiver can be paired with up to 6 Transmitters on 2 channels. Transmitter is built to endure rugged, outdoor environments.



### **General Specifications:**

Includes logic, Control Box, Safety Edge,  
Transmitter & Receiver.

### **M3&M4 Pressure Sensitive Safety Edge:**

10k Monitored Edge.

Color: Black

Electrical Max: 24 volt AC or DC 1/2 Amp.

Contact Element: Alumaglas®

Materials: Flexible PVC

Temperature Range: -30° F to 155° F

Indicate Length of Edge: (Standard 7'-0" long).

Indicate Lead in Wire Location:

**End (standard), Left Hand, or Right Hand.**

Indicate Length of 4-wire 18 Ga.

SJTO Lead-in Wire: (24" Standard)

### **916 Mhz Transmitter:**

Color: Black

Dimensions: 1.80"L x 4.78"W x 1.75"H

Weight: 4.5oz

Material: Polycarbonate NEMA 4

Power Source:

Includes 2 AA, 3.6 V Lithium batteries.  
(2 year battery life expectancy)

Input: 10k Monitored M3&M4 Edge.

### **Receiver:**

Power Source: 12-24 VAC/DC nominal, 100mA  
maximum

Output: 10K, N.C.

Temperature Range: -40° F to 140° F

Operating Range: 50 ft nominal, 100 ft optimal  
conditions.

Crown Industrial • 213 Michelle Ct. • So. San Francisco, Ca 94080-6202

Phone: (650) 952-5150 • Fax: (650) 873-1495

www.crown-industrial.com Email: autodor@crown-industrial.com

4

3

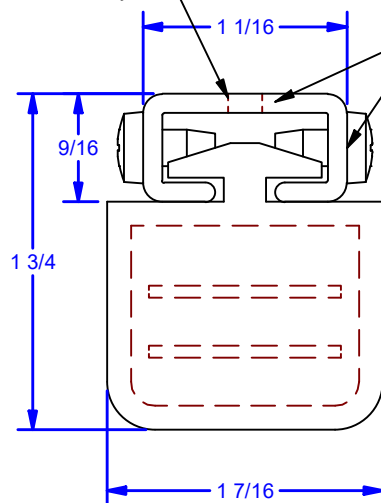
2

1

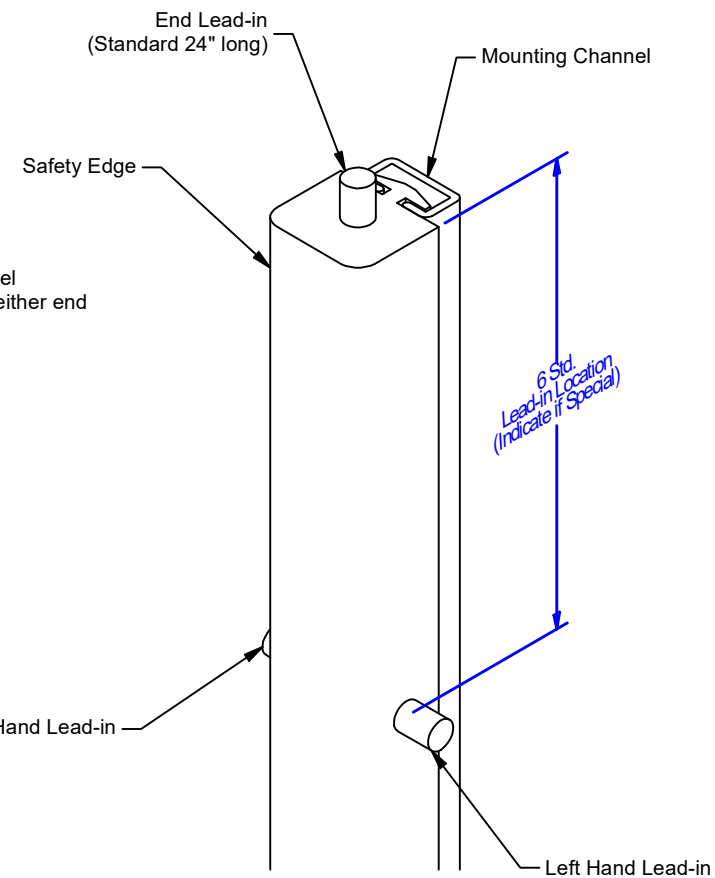
D

D

10X Ø11/64 THRU  
For #8 Oval Head Machine Screw @ 10" O.C.  
(DRILL BY OTHERS, TYP.)  
{Includes 10 ea. 8-32x3/4" PHFH TYPE-F Fasteners}



OPTIONAL: Secure Safety Edge in Channel  
By running #10-24x3/8" PHFH Type-F on either end



**Standard Height of Safety Edge: 7'-0"**  
**Maximum Length: 10'-0"**

DWG #: 90000131  
DRAWN:BCM 10/27/2010  
SHEET #3

File: 90000131.idw

#### ALL DIMENSIONS IN INCHES

THE INFORMATION CONTAINED IN THIS  
DRAWING IS THE SOLE PROPERTY OF  
CROWN INDUSTRIAL. ANY REPRODUCTION  
IN PART OR AS A WHOLE WITHOUT THE  
WRITTEN PERMISSION OF CROWN  
INDUSTRIAL IS PROHIBITED.

ID #:  
1265P570

STOCK PART #:  
M3&M4

MATERIAL:

DESCRIPTION:

Safety Edge Assy M3&M4 for SE-M120

FINISH:

# PCS. REV:



**CROWN  
INDUSTRIAL**

So. San Francisco, Ca  
(650) 952-5150

www.crown-industrial.com

4

3

2

1

A