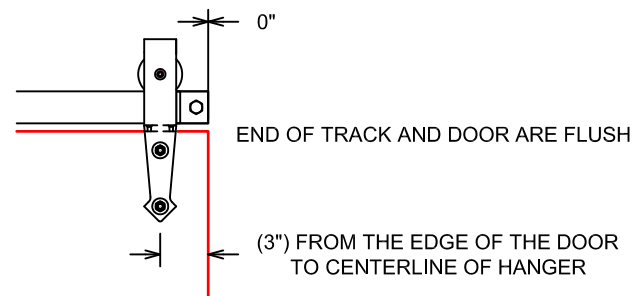


DETAIL A



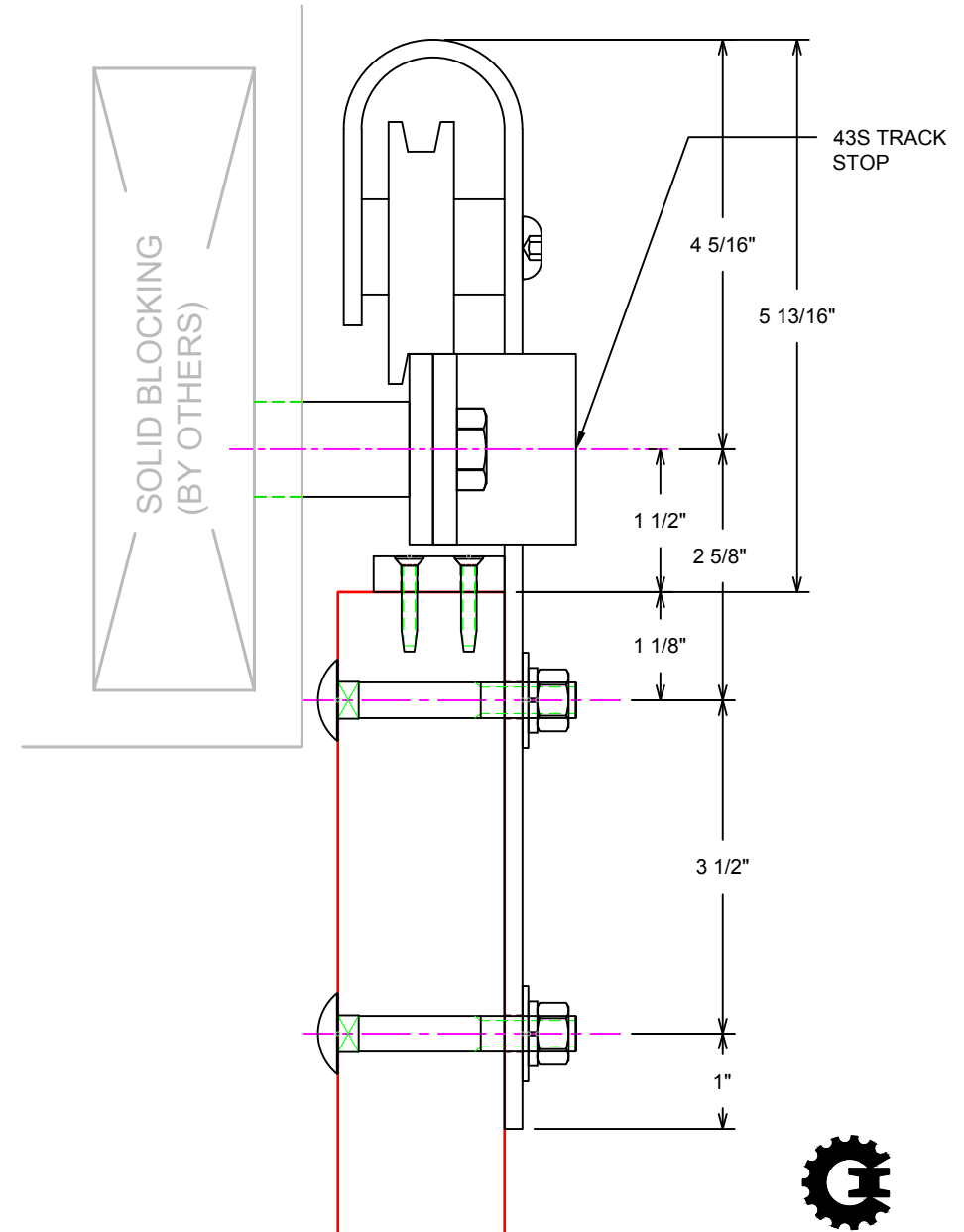
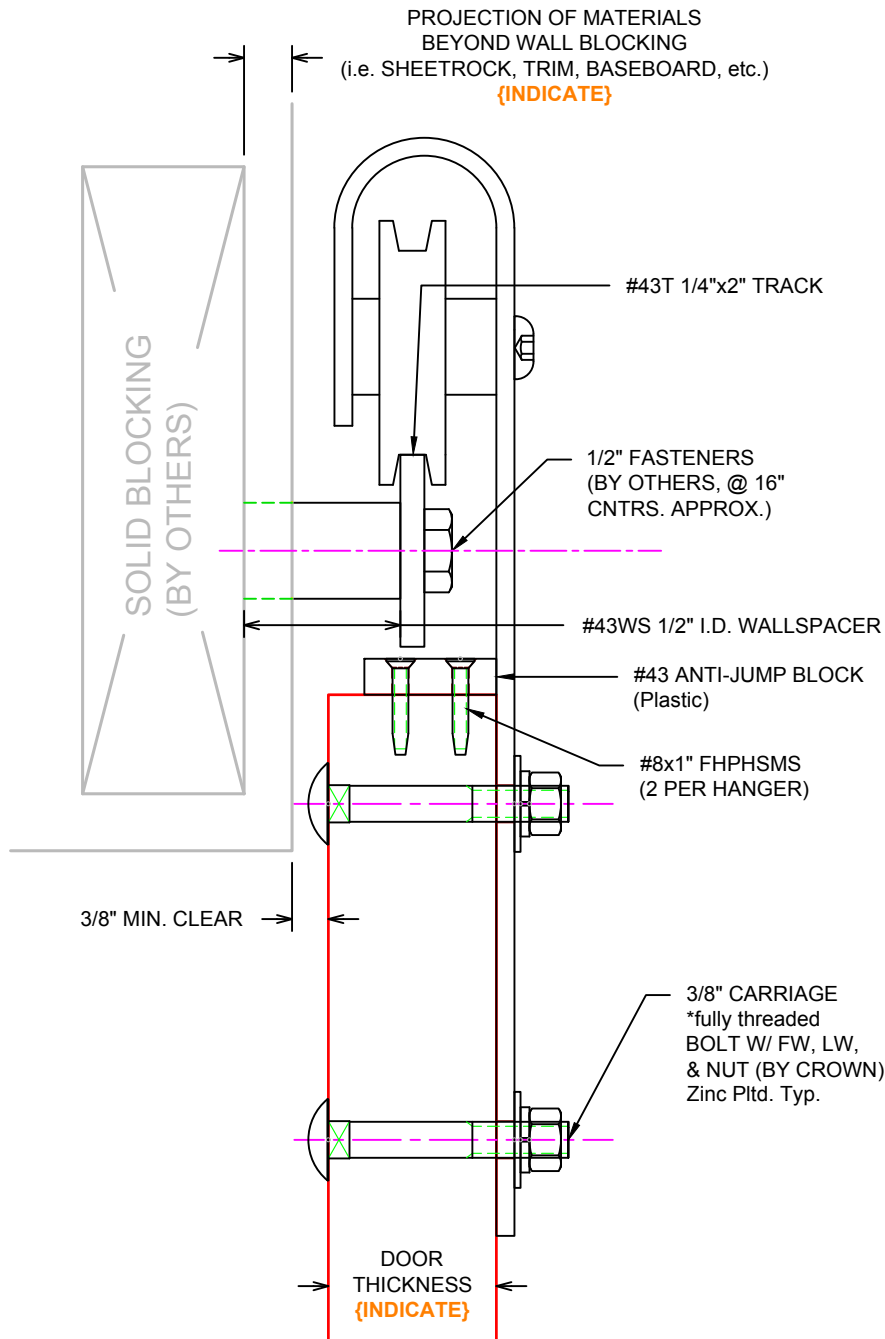
DETAIL B

INDICATE:

1. OPENING WIDTH:
2. DOOR WIDTH:
3. DOOR THICKNESS:
4. FROM THE EDGE OF THE DOOR TO THE CENTERLINE OF THE FLAT TRACK HANGER:
5. PROJECTION OF MATERIALS BEYOND WALL BLOCKING: (FOR WALL SPACER LENGTH- SEE SHEET 2)
6. FIELD OR FACTORY DRILL TRACK MOUNTING HOLES:



REVISIONS			
REV.	DESCRIPTION	DATE	APPROVED



43 FLAT TRACK
DESCRIP: 43H/43DEC Flat Track Head Section
DRAWN:BCM 10-23-09 REV:-----
SCALE: NONE
SHEET # 2

FILE: \\crown-fs\\main\\engineering\\hardware\\43flat\\flat track template\\flat track customer template 10-23-09

THE INFORMATION CONTAINED IN THIS DRAWING IS THE SOLE PROPERTY OF CROWN INDUSTRIAL. ANY REPRODUCTION IN PART OR AS A WHOLE WITHOUT WRITTEN PERMISSION OF CROWN INDUSTRIAL IS PROHIBITED.



**CROWN
INDUSTRIAL**

So. San Francisco, Ca
(650) 952-5150
www.crown-industrial.com

4

3

2

1

43WS 1/2" I.D. WALLSPACER

1/2" FASTENER
(BY OTHERS, TYPICAL)

43S TRACK STOP

ANTI-JUMP BLOCK
w/ #8x1" FHPHMS
(BY CROWN)3/8 CARRIAGE BOLTS w/ FW, LW, & NUT
(BY CROWN)**BACK/WALLSIDE VIEW****FRONT VIEW**NOTE: ALL WALLSPACERS MUST COME IN
DIRECT CONTACT WITH SOLID BLOCKINGDWG #: 43H
DRAWN:BCM 12/15/2008
SHEET #2
File: 0000316.idw**ALL DIMENSIONS IN INCHES**THE INFORMATION CONTAINED IN THIS
DRAWING IS THE SOLE PROPERTY OF
CROWN INDUSTRIAL. ANY REPRODUCTION
IN PART OR AS A WHOLE WITHOUT THE
WRITTEN PERMISSION OF CROWN
INDUSTRIAL IS PROHIBITED.

ID #:

0000316

STOCK PART #:

43DEC

MATERIAL:

DESCRIPTION:

#43 "DECORATIVE" FLAT TRACK ASSEMBLY

FINISH:

Specify

PCS. REV:

2

**CROWN
INDUSTRIAL**So. San Francisco, Ca
(650) 952-5150
www.crown-industrial.com

4

3

2

1